

# **Creative Fabrica**

**Embroidery Design  
Sewing Information**

**[www.creativefabrica.com/embroidery/](http://www.creativefabrica.com/embroidery/)**

© Creative Fabrica

# Production Worksheet

Wilcom EmbroideryStudio - Designing

Design: **DBG\_Level-Up-4x4**

Title:

Stitches: 8,366

Height: 91.3 mm

Width: 95.3 mm

Colors: 7

Colorway: Color Stop Steps

Zoom: 1.95

designed by  
geeks

This design is optimized for 100% cotton fabric with two sheets of tear away stabilizer. If you are stitching this design on a different fabric, please adjust your stabilizer accordingly.

All designs created by Designed by Geeks, LLC are the sole property of Designed by Geeks, LLC.

Machine format: Janome

Color changes: 6

Stops: 7

Trims: 21

Fabric: Pure Cotton

Required stabilizer: Topping:

Backing: Tear Away x 2

Appliqués: 3

Left: 46.9 mm

Right: 48.4 mm

Up: 45.7 mm

Down: 45.6 mm

EndX: -42.5 mm

EndY: -40.1 mm

Area: 8705.0 mm²

Max stitch: 8.2 mm

Min stitch: 0.3 mm

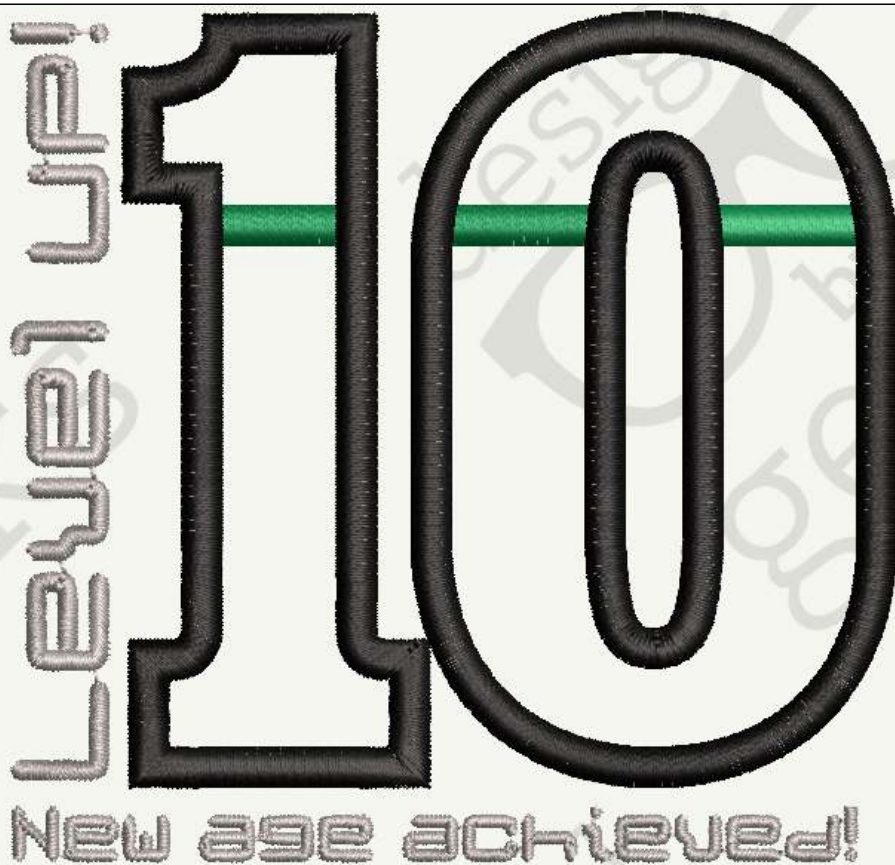
Max jump: 7.1 mm

Total thread: 49.95m

Total bobbin: 19.27m

Stop Sequence:

#	Color	St.	Code	Name	Element
1.		119	1	Placement	
2.		114	2	Tack Down	
3.		215	3	2nd Placement	
4.		222	4	2nd Tack Down	
5.		381	Green	Green	
6.		4,190	Black	Black	
7.		3,125	Grey	Grey	



Authors: Designed by Geeks

Design last saved : 8/19/2018 2:00:00 PM

Date printed: 8/19/2018 2:00:02 PM

Page 1 of 2

## Color Film

Wilcom EmbroideryStudio - Designing

Design: **DBG\_Level-Up-4x4**

Title:

Stitches: 8,366

Height: 91.3 mm

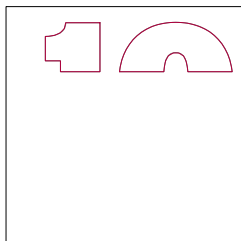
Width: 95.3 mm

Colors: 7

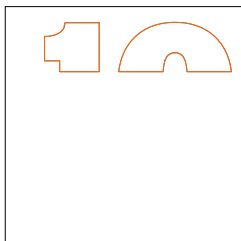
Colorway: Color Stop Steps

Zoom: 0.50

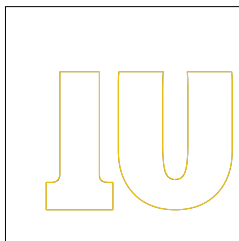
designed by  
geeks



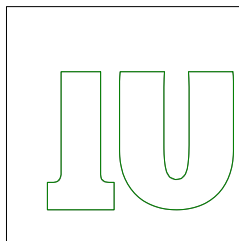
Stop #: 1  
Code: 1  
Name: Placement  
Chart: Applique Steps  
Stitches: 119  
Thread used: 0.56m



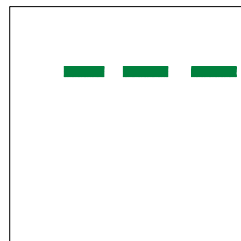
Stop #: 2  
Code: 2  
Name: Tack Down  
Chart: Applique Steps  
Stitches: 114  
Thread used: 0.55m



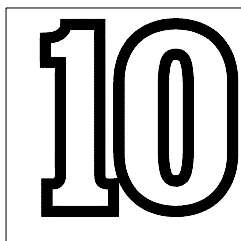
Stop #: 3  
Code: 3  
Name: 2nd Placement  
Chart: Applique Steps  
Stitches: 215  
Thread used: 1.07m



Stop #: 4  
Code: 4  
Name: 2nd Tack Down  
Chart: Applique Steps  
Stitches: 222  
Thread used: 1.09m



Stop #: 5  
Code: Green  
Name: Green  
Chart: Generic  
Stitches: 381  
Thread used: 2.69m



Stop #: 6  
Code: Black  
Name: Black  
Chart: Generic  
Stitches: 4,190  
Thread used: 30.81m



Stop #: 7  
Code: Grey  
Name: Grey  
Chart: Generic  
Stitches: 3,125  
Thread used: 12.48m

Authors: Designed by Geeks

Design last saved : 8/19/2018 2:00:00 PM

Date printed: 8/19/2018 2:00:02 PM

Page 2 of 2

# Production Worksheet

Wilcom EmbroideryStudio - Designing

Design: **DBG\_Level-Up-5x7**

Title:

Stitches: 11,353

Height: 125.4 mm

Width: 130.9 mm

Colors: 7

Colorway: Color Stop Steps

Zoom: 1.42

designed by  
geeks

This design is optimized for 100% cotton fabric with two sheets of tear away stabilizer. If you are stitching this design on a different fabric, please adjust your stabilizer accordingly.

All designs created by Designed by Geeks, LLC are the sole property of Designed by Geeks, LLC.

Machine format: Janome

Color changes: 6

Stops: 7

Trims: 26

Fabric: Pure Cotton

Required stabilizer: Topping:

Backing: Tear Away x 2

Appliqués: 3

Left: 63.7 mm

Right: 67.2 mm

Up: 62.2 mm

Down: 63.2 mm

EndX: -57.8 mm

EndY: -55.8 mm

Area: 16413.3 mm²

Max stitch: 11.4 mm

Min stitch: 0.3 mm

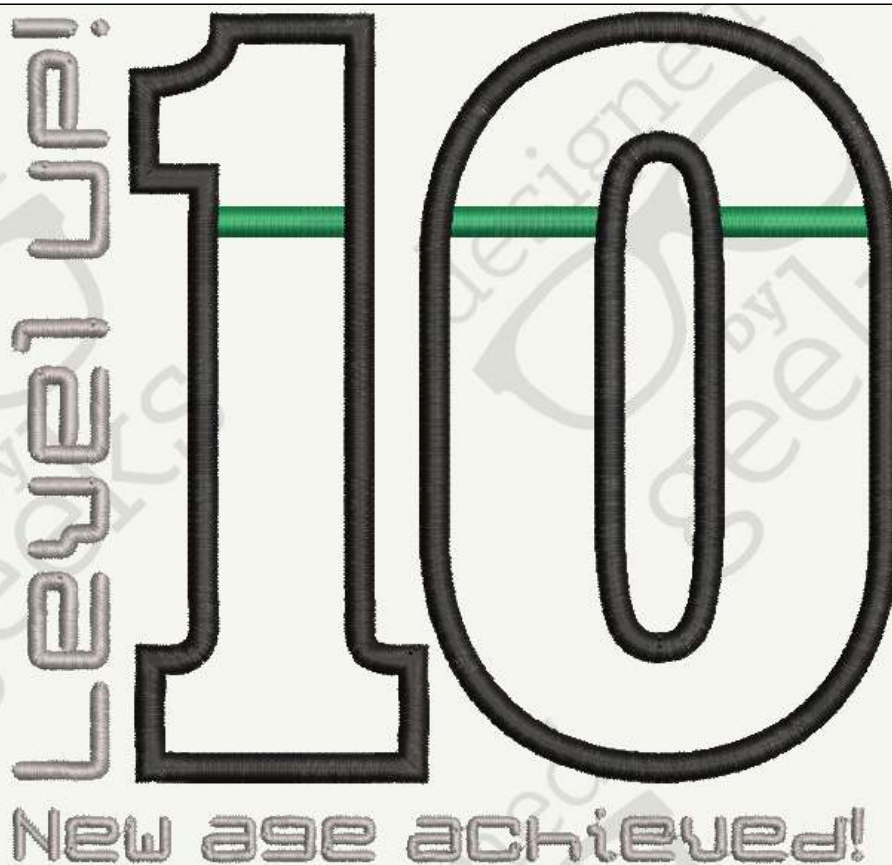
Max jump: 7.0 mm

Total thread: 69.98m

Total bobbin: 27.60m

Stop Sequence:

#	Color	St.	Code	Name	Element
1.		155	1	Placement	
2.		150	2	Tack Down	
3.		290	3	2nd Placement	
4.		301	4	2nd Tack Down	
5.		513	Green	Green	
6.		5,706	Black	Black	
7.		4,238	Grey	Grey	



Authors: Designed by Geeks

Design last saved : 8/19/2018 1:58:11 PM

Date printed: 8/19/2018 1:58:13 PM

Page 1 of 2

## Color Film

Wilcom EmbroideryStudio - Designing

Design: **DBG\_Level-Up-5x7**

Title:

Stitches: 11,353

Height: 125.4 mm

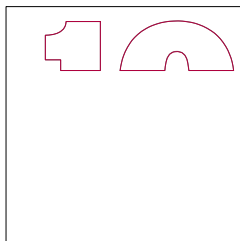
Width: 130.9 mm

Colors: 7

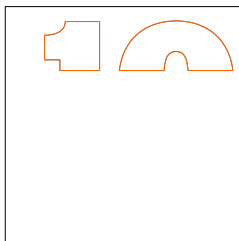
Colorway: Color Stop Steps

Zoom: 0.36

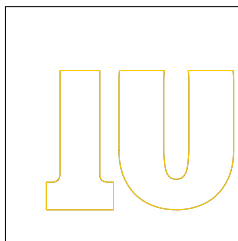
designed by  
geeks



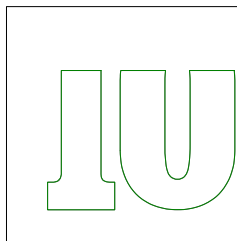
Stop #: 1  
Code: 1  
Name: Placement  
Chart: Applique Steps  
Stitches: 155  
Thread used: 0.74m



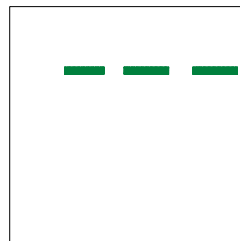
Stop #: 2  
Code: 2  
Name: Tack Down  
Chart: Applique Steps  
Stitches: 150  
Thread used: 0.73m



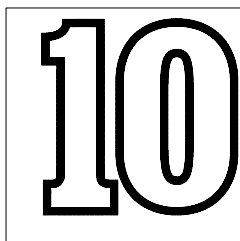
Stop #: 3  
Code: 3  
Name: 2nd Placement  
Chart: Applique Steps  
Stitches: 290  
Thread used: 1.46m



Stop #: 4  
Code: 4  
Name: 2nd Tack Down  
Chart: Applique Steps  
Stitches: 301  
Thread used: 1.48m



Stop #: 5  
Code: Green  
Name: Green  
Chart: Generic  
Stitches: 513  
Thread used: 3.67m



Stop #: 6  
Code: Black  
Name: Black  
Chart: Generic  
Stitches: 5,706  
Thread used: 42.13m



Stop #: 7  
Code: Grey  
Name: Grey  
Chart: Generic  
Stitches: 4,238  
Thread used: 19.06m

Authors: Designed by Geeks

Design last saved : 8/19/2018 1:58:11 PM

Date printed: 8/19/2018 1:58:13 PM

Page 2 of 2

## Production Worksheet

Wilcom EmbroideryStudio - Designing

Design: **DBG\_Level-Up-6x10**

Title:

Stitches: 12,376

Height: 135.4 mm

Width: 141.4 mm

Colors: 7

Colorway: Color Stop Steps

Zoom: 1.32

designed by  
**geeks**

This design is optimized for 100% cotton fabric with two sheets of tear away stabilizer. If you are stitching this design on a different fabric, please adjust your stabilizer accordingly.

All designs created by Designed by Geeks, LLC are the sole property of Designed by Geeks, LLC.

Machine format: Janome

Color changes: 6

Stops: 7

Trims: 26

Fabric: Pure Cotton

Required stabilizer: Topping:

Backing: Tear Away x 2

Appliqués: 3

Left: 69.0 mm

Right: 72.4 mm

Up: 67.5 mm

Down: 67.8 mm

EndX: -62.1 mm

EndY: -59.9 mm

Area 19137.1 mm²

Max stitch: 12.3 mm

Min stitch: 0.3 mm

Max jump: 7.5 mm

Total thread: 76.96m

Total bobbin: 30.52m

Stop Sequence:

#	Color	St.	Code	Name	Element
1.		165	1	Placement	
2.		159	2	Tack Down	
3.		307	3	2nd Placement	
4.		318	4	2nd Tack Down	
5.		546	Green	Green	
6.		6,344	Black	Black	
7.		4,537	Grey	Grey	



Authors: Designed by Geeks

Design last saved : 8/19/2018 1:55:18 PM

Date printed: 8/19/2018 1:55:27 PM

Page 1 of 2

## Color Film

Wilcom EmbroideryStudio - Designing

Design: **DBG\_Level-Up-6x10**

Title:

Stitches: 12,376

Height: 135.4 mm

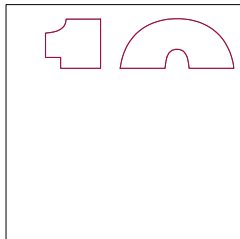
Width: 141.4 mm

Colors: 7

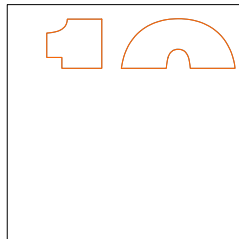
Colorway: Color Stop Steps

Zoom: 0.34

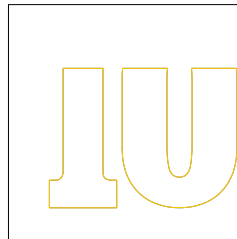
designed by  
**geeks**



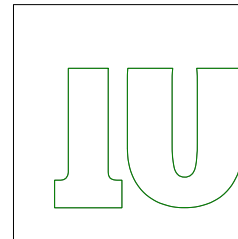
Stop #: 1  
Code: 1  
Name: Placement  
Chart: Applique Steps  
Stitches: 165  
Thread used: 0.80m



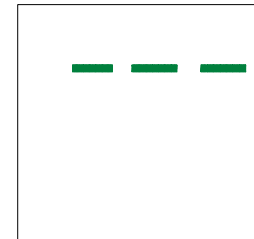
Stop #: 2  
Code: 2  
Name: Tack Down  
Chart: Applique Steps  
Stitches: 159  
Thread used: 0.79m



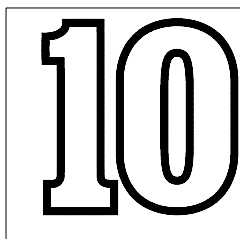
Stop #: 3  
Code: 3  
Name: 2nd Placement  
Chart: Applique Steps  
Stitches: 307  
Thread used: 1.56m



Stop #: 4  
Code: 4  
Name: 2nd Tack Down  
Chart: Applique Steps  
Stitches: 318  
Thread used: 1.58m



Stop #: 5  
Code: Green  
Name: Green  
Chart: Generic  
Stitches: 546  
Thread used: 3.93m



Stop #: 6  
Code: Black  
Name: Black  
Chart: Generic  
Stitches: 6,344  
Thread used: 46.41m



Stop #: 7  
Code: Grey  
Name: Grey  
Chart: Generic  
Stitches: 4,537  
Thread used: 21.19m

Authors: Designed by Geeks

Design last saved : 8/19/2018 1:55:18 PM

Date printed: 8/19/2018 1:55:27 PM

Page 2 of 2

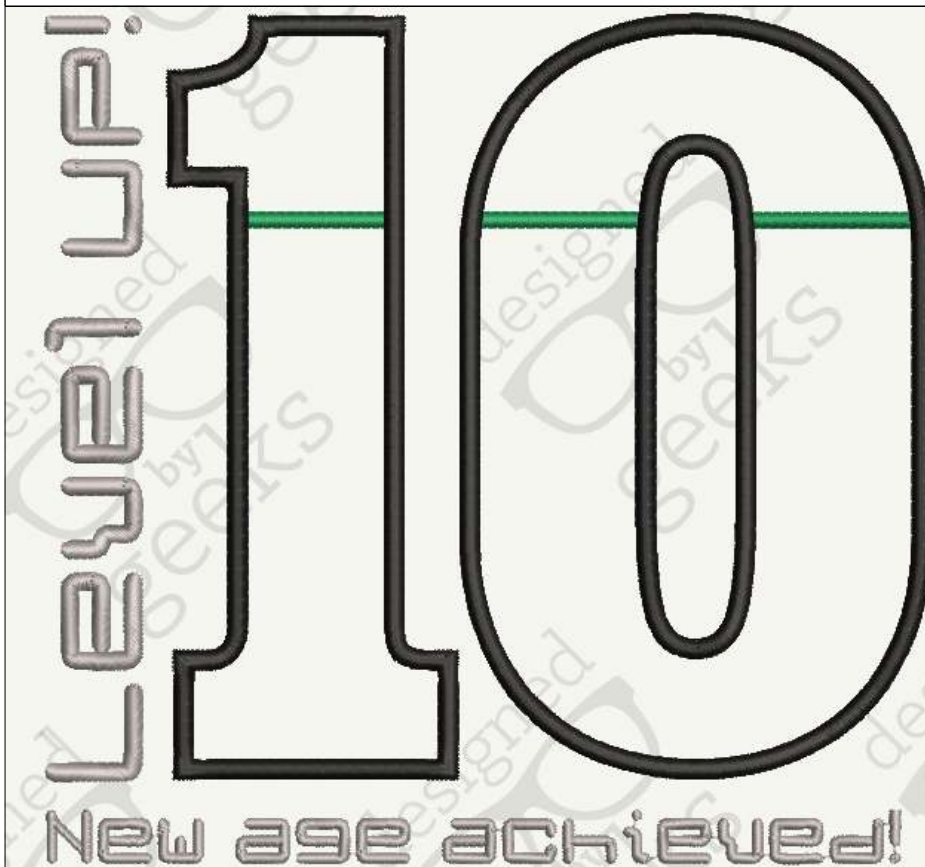
This design is optimized for 100% cotton fabric with two sheets of tear away stabilizer. If you are stitching this design on a different fabric, please adjust your stabilizer accordingly.

All designs created by Designed by Geeks, LLC are the sole property of Designed by Geeks, LLC.

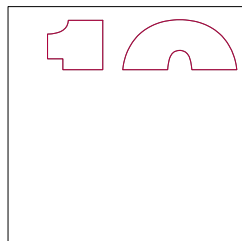
Machine format: Janome  
 Color changes: 6  
 Stops: 7  
 Trims: 29  
 Fabric: Pure Cotton  
 Required stabilizer: Topping:  
 Backing: Tear Away x 2  
 Appliqués: 3  
 Left: 95.4 mm  
 Right: 99.9 mm  
 Up: 93.1 mm  
 Down: 93.9 mm  
 EndX: -86.1 mm  
 EndY: -82.4 mm  
 Area: 36528.4 mm²  
 Max stitch: 7.0 mm  
 Min stitch: 0.3 mm  
 Max jump: 7.0 mm  
 Total thread: 109.30m  
 Total bobbin: 44.46m

**Stop Sequence:**

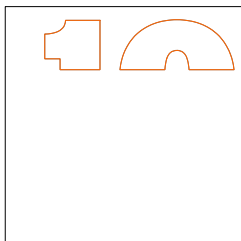
#	Color	St.	Code	Name	Element
1.		221	1	Placement	
2.		216	2	Tack Down	
3.		423	3	2nd Placement	
4.		416	4	2nd Tack Down	
5.		709	Green	Green	
6.		8,580	Black	Black	
7.		6,216	Grey	Grey	



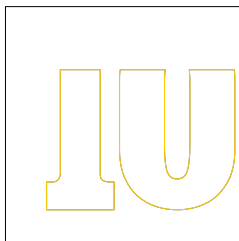
**Color Film**



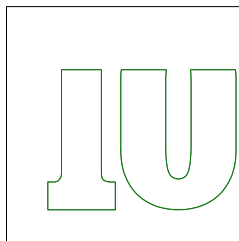
Stop #: 1  
 Code: 1  
 Name: Placement  
 Chart: Applique Steps  
 Stitches: 221  
 Thread used: 1.08m



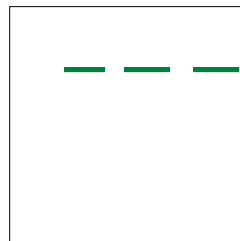
Stop #: 2  
 Code: 2  
 Name: Tack Down  
 Chart: Applique Steps  
 Stitches: 216  
 Thread used: 1.07m



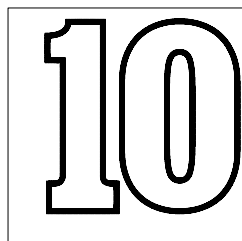
Stop #: 3  
 Code: 3  
 Name: 2nd Placement  
 Chart: Applique Steps  
 Stitches: 423  
 Thread used: 2.14m



Stop #: 4  
 Code: 4  
 Name: 2nd Tack Down  
 Chart: Applique Steps  
 Stitches: 416  
 Thread used: 2.13m



Stop #: 5  
 Code: Green  
 Name: Green  
 Chart: Generic  
 Stitches: 709  
 Thread used: 4.41m



Stop #: 6  
 Code: Black  
 Name: Black  
 Chart: Generic  
 Stitches: 8,580  
 Thread used: 63.83m



Stop #: 7  
 Code: Grey  
 Name: Grey  
 Chart: Generic  
 Stitches: 6,216  
 Thread used: 33.94m