

# **Creative Fabrica**

**Embroidery Design  
Sewing Information**

**[www.creativefabrica.com/embroidery/](http://www.creativefabrica.com/embroidery/)**

© Creative Fabrica

**Needle Thread consumption**

1	1219	50.8%	(110.8 ft)
2	1292	14.7%	(32.1 ft)
3	1045	17.6%	(38.4 ft)
4	1299	4.2%	(9.2 ft)
5	1046	5.4%	(11.7 ft)
6	1046	2.0%	(4.4 ft)
7	1003	4.9%	(10.6 ft)
8	1006	0.5%	(1.0 ft)

Upper thread 218.2 ft  
 Bobbin 72.7 ft  
 Catalog: Madeira Rayon

**File: Ted an....pes (Babylock, Bernina, Brother #PES0001)**

**Design name: Tedandfriends-mu**

**Stitches: 13856**

**Size: 4.60 x 3.07 " (116.9 x 78.1 mm)**

**Begin: 2.30, 1.54 "**

**End: 2.96, 2.08 "**

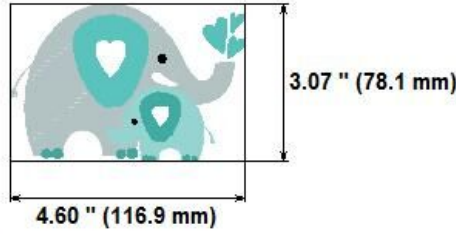
**Start needle: 1**

**Colors: 8/8 , Stops: 7**

**Date: 6/01/2015**



**Ted and Friends  
 Woodend Victoria  
 Australia**

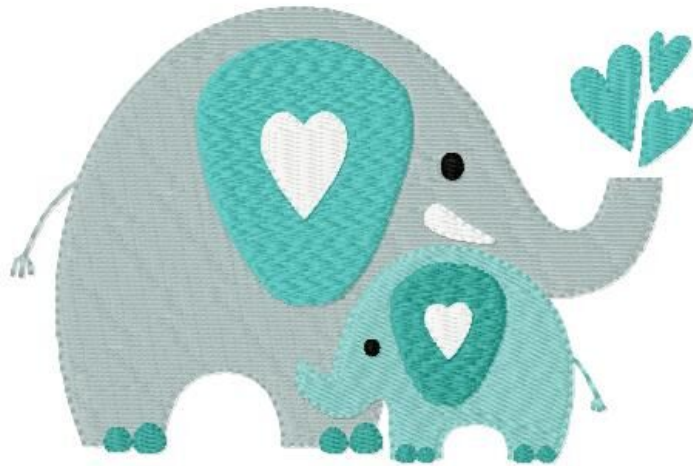


Stitches ratio diagram:



**Histogram**

- (6657) Stop 1
- (8784) Stop 2
- (10990) Stop 3
- (11733) Stop 4
- (12484) Stop 5
- (12971) Stop 6
- (13741) Stop 7
- (13856) End



**Needle Thread consumption**

1	1219	50.8%	(78.2 ft)
2	1292	15.0%	(23.2 ft)
3	1045	17.2%	(26.4 ft)
4	1299	4.3%	(6.6 ft)
5	1046	5.4%	(8.3 ft)
6	1046	2.1%	(3.3 ft)
7	1003	4.7%	(7.3 ft)
8	1006	0.5%	(0.8 ft)

Upper thread 154.0 ft  
 Bobbin 51.3 ft  
 Catalog: Madeira Rayon

**File: Ted an...pes (Babylock, Bernina, Brother #PES0001)**

**Design name: Tedandfriends-mu**

**Stitches: 10312**

**Size: 3.80 x 2.54 " (96.6 x 64.5 mm)**

**Begin: 1.90, 1.27 "**

**End: 2.44, 1.72 "**

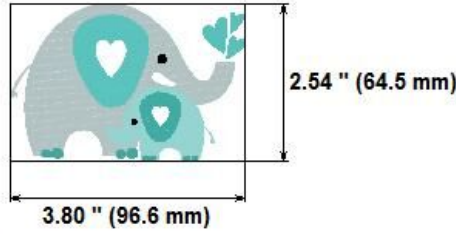
**Start needle: 1**

**Colors: 8/8 , Stops: 7**

**Date: 6/01/2015**



**Ted and Friends  
 Woodend Victoria  
 Australia**



Stitches ratio diagram:



**Histogram**

- (4899) Stop 1
- (6531) Stop 2
- (8102) Stop 3
- (8672) Stop 4
- (9228) Stop 5
- (9642) Stop 6
- (10215) Stop 7
- (10312) End

