



Creative Fabrica

**Embroidery Design
Sewing Information**

www.creativefabrica.com/embroidery/

© Creative Fabrica

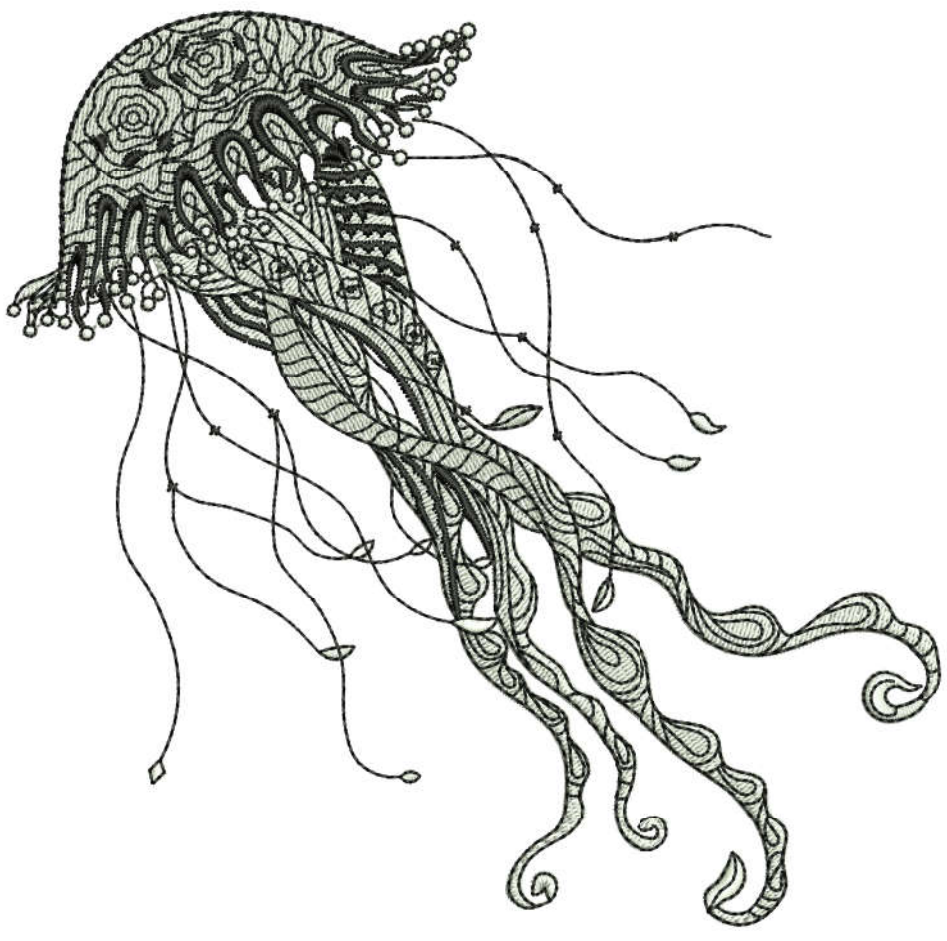
Production Worksheet

Wilcom TrueSizer
Design: E-21556 6x6
Colorway: Madeira Classic 40

Stitches: 22258
Colors: 2
Height: 5.00 in
Width: 5.09 in
Zoom: 0.95



Machine format: Tajima
Color changes: 1
Stops: 2
Trims: 16
Auto fabric: Fabric Name
Required stabilizer: Stabilizer
Left: 64.6 mm
Right: 64.6 mm
Up: 63.5 mm
Down: 63.5 mm
EndX: 0.00 in
EndY: 0.00 in
Area: 25.42 in²
Max Stitch: 6.7 mm
Min Stitch: 0.2 mm
Max jump: 6.7 mm
Total Thread: 315.79ft
Total bobbin: 100.00ft



Stop Sequence:

#	N#	St.	Code	Description	Brand
1.	13	<input type="checkbox"/>	11053	1001 Super White	Madeira Classic 40
2.	14	<input checked="" type="checkbox"/>	11203	1000 Emerald Black	Madeira Classic 40