



Creative Fabrica

**Embroidery Design
Sewing Information**

www.creativefabrica.com/embroidery/

© Creative Fabrica

Card case

Pay attention this is a universal instruction.

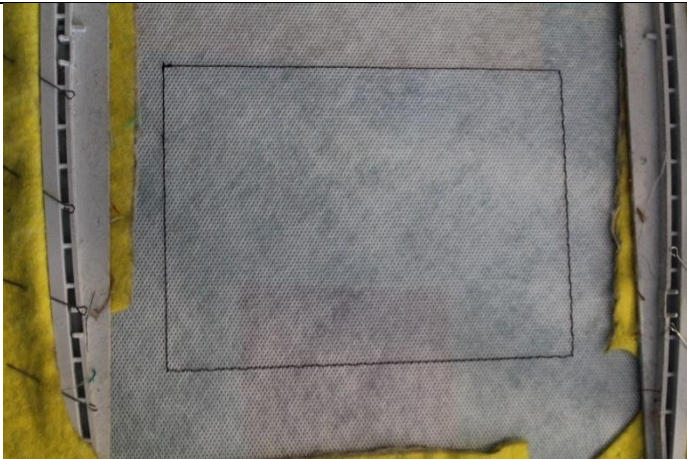
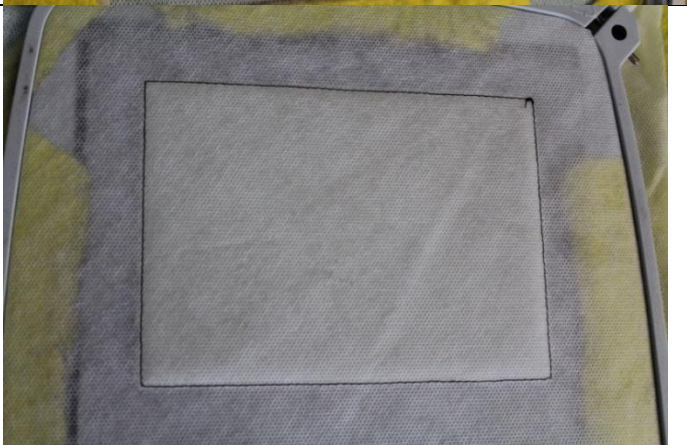

This instruction will work with most of my Card Cases. So the patterns in the photo may be different (I'm sorry). But Photos with this purchased design will be placed next.

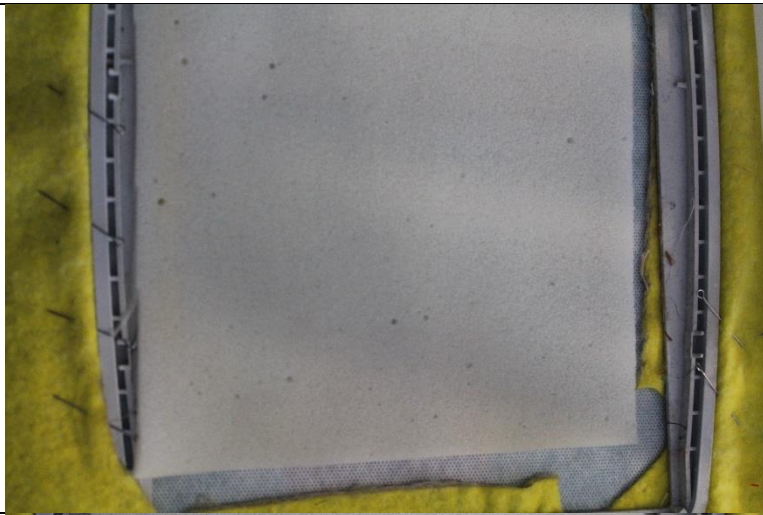
Recommended fabrics.

The choice of fabric depends on your preferences.

I use eco-leather and vinyl leather with a thickness of 0.6-0.85 mm. If the skin is very thin, it should be glued with a thin dublerin.

The filler – rubber foam with a thickness of 5 mm or polyester batting 80 or 100.

	<p>Hoop tearaway or water-soluble stabilizer. Stitch Color 1 - the placement line for design</p>
	<p>Turn the hoop over so the wrong side is up.</p>
	<p>Place Lining right side up. You can use temporary fixation glue</p>



Put polyester batting.
You can use temporary fixation glue



Stitch Color 2

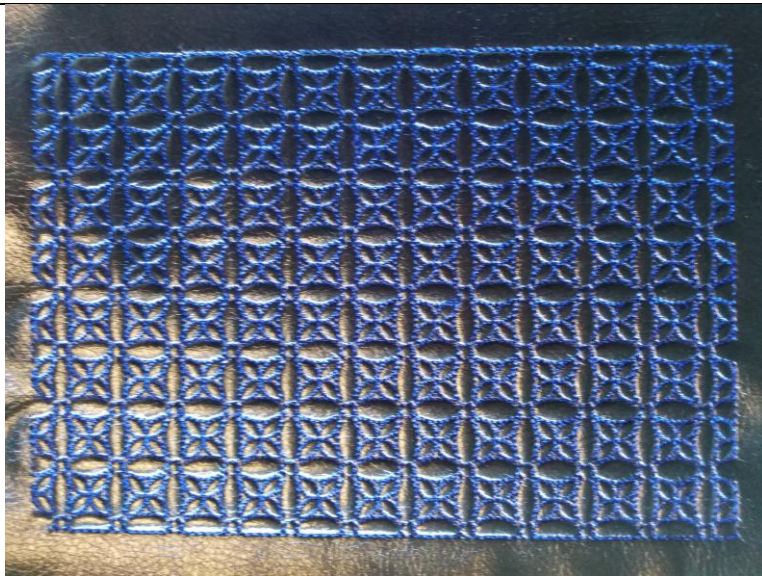


Cut off the exceed the polyester batting around near stitch.
I recommend cutting the polyester batting at this stage to avoid thick seams.



Put the main fabric face up.
You can use temporary fixation glue

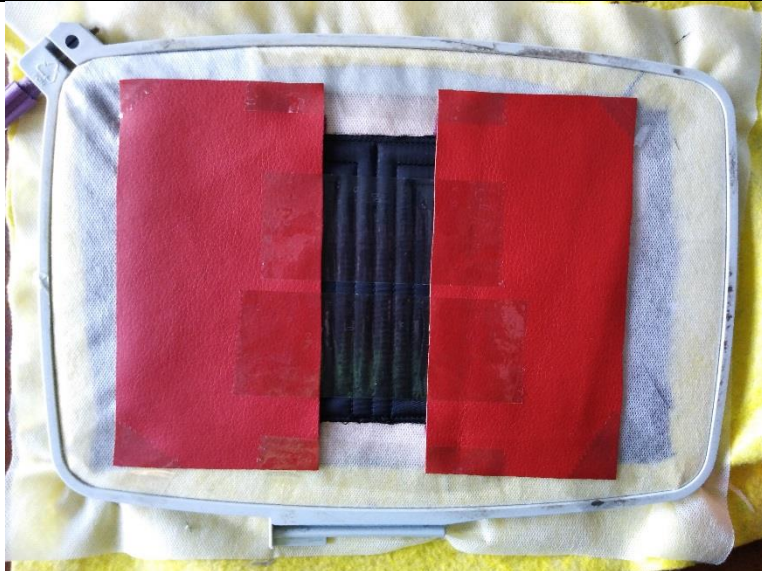
Please note that in this model there is no any stitch that fixes the fabric to the stabilizer, since numerous tests of various fabrics have shown that some fabrics may move slightly while embroidering and therefore a fold can appear at the edge of the embroidery.



Stitch Color 3



Remove the hoop and turn it over so the wrong side is up.
Cut off the close to the stitch trying not to cut the thread.



Do the pockets

Cut 2 rectangles 13x7 cm (5x3") in size - it's pockets

Measure from the edges of 4.5 cm (2") . Place the pockets as in the photo.

Fix it with adhesive tape.



Stitch Color 4 - secure the pocket (zigzag for cutting)



Cut off the exceed material around near zigzag stitch, on both sides of the hoop.



Stitch Color 5 - satin border

Cut stabilizer. Remove the stabilizer residues with a wet sponge



Also in my shop



Needle Thread consumption

1	9018	1.6%	(0.9 m)
2	1095	1.4%	(0.8 m)
3	1029	51.2%	(27.8 m)
4	1036	6.1%	(3.3 m)
5	1223	39.6%	(21.5 m)

Upper thread 54.3 m
Bobbin 18.1 m
Catalog: Hemingworth

File: 1.pec (Babylock, Bernina, Brother #PEC0001)

Design name: 1

Stitches: 17604

Size: 103.4 x 139.4 mm (4.07 x 5.49 ")

Begin: 51.7, 69.7 mm

End: 99.0, 58.9 mm

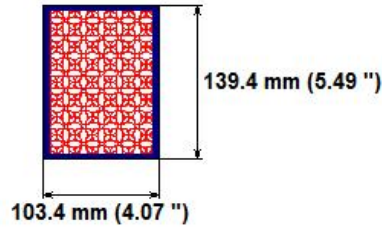
Start needle: 1

Colors: 5/5 , Stops: 4

Date: 13.10.2019



imilova777@gmail.com



Histogram

(208)	Stop 1
(404)	Stop 2
(13831)	Stop 3
(14540)	Stop 4
(17604)	End

Stitches ratio diagram:

