



# **Creative Fabrica**

**Embroidery Design  
Sewing Information**

**[www.creativefabrica.com/embroidery/](http://www.creativefabrica.com/embroidery/)**

© Creative Fabrica

**Needle Thread consumption**

1	1001	8.3%	(42.3 m)
2	1069	5.3%	(26.7 m)
3	1077	2.9%	(14.5 m)
4	1229	6.9%	(34.9 m)
5	1062	7.2%	(36.7 m)
6	1227	0.9%	(4.4 m)
7	1139	4.4%	(22.5 m)
8	1235	5.2%	(26.6 m)
9	1098	2.2%	(10.9 m)
10	1171	7.5%	(38.1 m)
11	1028	8.8%	(44.9 m)
12	1133	8.2%	(41.7 m)
13	1238	6.4%	(32.3 m)
14	1131	6.9%	(35.0 m)
15	1066	7.1%	(35.9 m)
16	1079	11.9%	(60.4 m)

Upper thread 507.7 m  
 Bobbin 169.2 m  
 Catalog: Hemingworth

**File: wolf6-8.pes (Babylock, Bernina, Brother #PES0055)**

**Design name: Wolf6-8**  
**Stitches: 131040**  
**Size: 198.6 x 158.6 mm (7.82 x 6.24 ")**  
**Begin: 99.3, 79.3 mm**  
**End: 75.8, 75.9 mm**  
**Start needle: 1**  
**Colors: 16/16 , Stops: 15**  
**Date: 20.06.2017**



198.6 mm (7.82 ")

158.6 mm (6.24 ")

**Histogram**

Stitches ratio diagram:



- (10534) Stop 1
- (17346) Stop 2
- (20928) Stop 3
- (29892) Stop 4
- (39197) Stop 5
- (40243) Stop 6
- (45875) Stop 7
- (52573) Stop 8
- (55377) Stop 9
- (65270) Stop 10
- (77455) Stop 11
- (88300) Stop 12
- (96694) Stop 13
- (105889) Stop 14
- (115428) Stop 15
- (131040) End



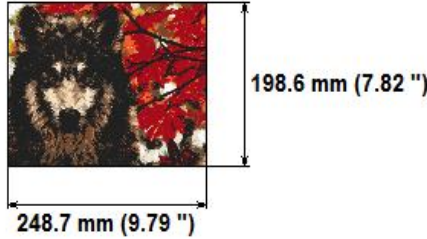
**Needle Thread consumption**

1	1001	8.1%	(54.3 m)
2	1069	5.3%	(35.6 m)
3	1077	3.0%	(20.0 m)
4	1229	6.8%	(45.9 m)
5	1062	7.2%	(48.4 m)
6	1227	0.9%	(6.2 m)
7	1139	4.4%	(29.7 m)
8	1235	5.3%	(35.5 m)
9	1098	2.2%	(14.5 m)
10	1171	7.6%	(51.0 m)
11	1028	8.6%	(58.1 m)
12	1133	8.4%	(56.2 m)
13	1238	6.5%	(44.1 m)
14	1131	7.0%	(47.3 m)
15	1066	6.9%	(46.7 m)
16	1079	11.9%	(79.9 m)

Upper thread 673.4 m  
 Bobbin 224.5 m  
 Catalog: Hemingworth

**File: wolf8-10.pes (Babylock, Bernina, Brother #PES0055)**

**Design name: Wolf8-10**  
**Stitches: 190532**  
**Size: 248.7 x 198.6 mm (9.79 x 7.82 ")**  
**Begin: 124.4, 99.3 mm**  
**End: 94.9, 95.1 mm**  
**Start needle: 1**  
**Colors: 16/16 , Stops: 15**  
**Date: 20.06.2017**

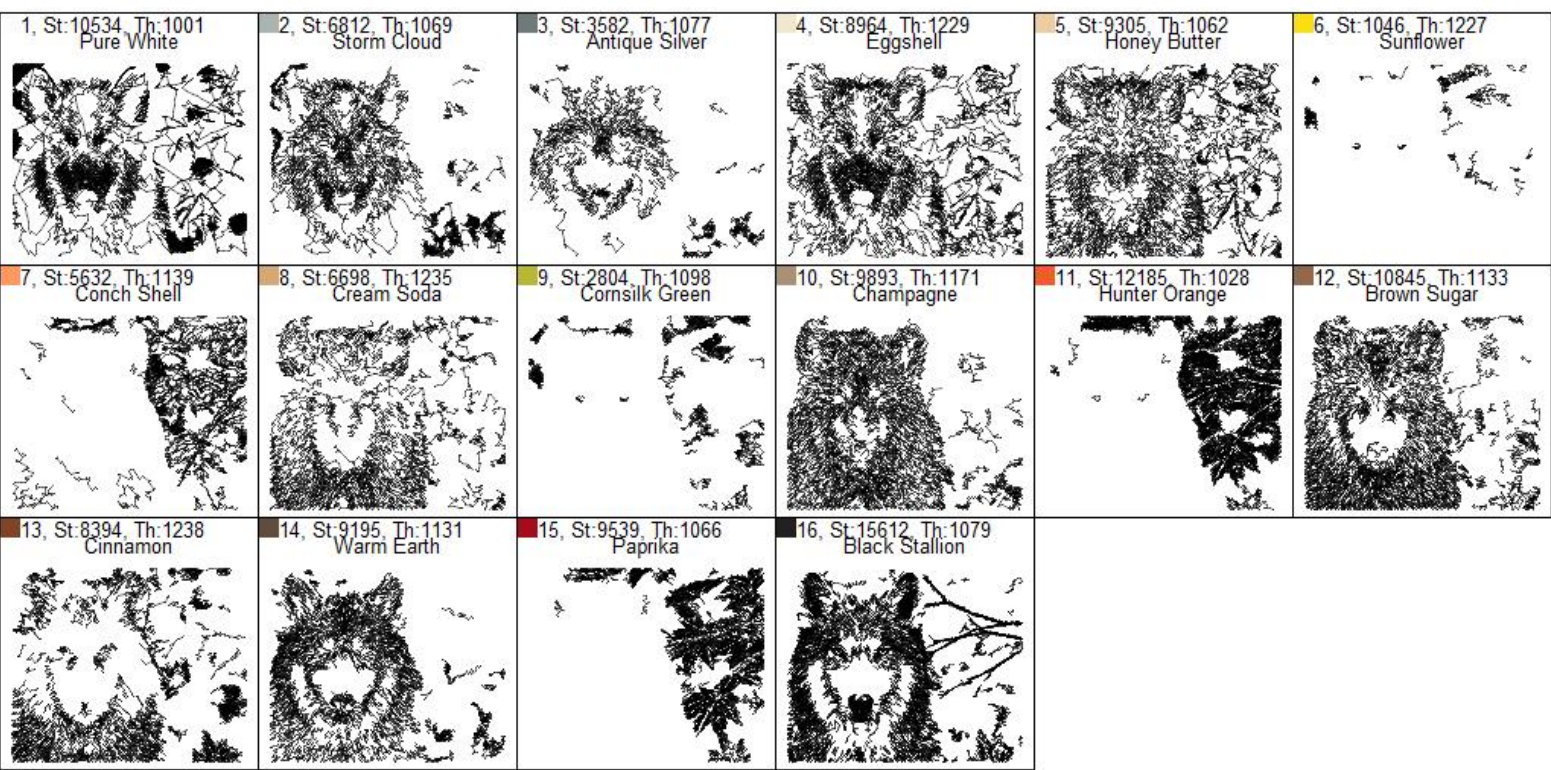


**Histogram**

- (15691) Stop 1
- (25865) Stop 2
- (31364) Stop 3
- (44810) Stop 4
- (58710) Stop 5
- (60256) Stop 6
- (68503) Stop 7
- (78540) Stop 8
- (82428) Stop 9
- (97141) Stop 10
- (113530) Stop 11
- (129420) Stop 12
- (141775) Stop 13
- (155265) Stop 14
- (168265) Stop 15
- (190532) End

**Stitches ratio diagram:**





1, St:15691, Th:1001 Pure White	2, St:10174, Th:1069 Storm Cloud	3, St:5499, Th:1077 Antique Silver	4, St:13446, Th:1229 Eggshell	5, St:13900, Th:1062 Honey Butter	6, St:1546, Th:1227 Sunflower
7, St:8247, Th:1139 Conch Shell	8, St:10037, Th:1235 Cream Soda	9, St:3888, Th:1098 Cornsilk Green	10, St:14713, Th:1171 Champagne	11, St:16389, Th:1028 Hunter Orange	12, St:15890, Th:1133 Brown Sugar
13, St:12355, Th:1238 Cinnamon	14, St:13490, Th:1131 Warm Earth	15, St:13000, Th:1066 Paprika	16, St:22267, Th:1079 Black Stallion		



Thread	Consumption	Name	Madeira Polyneon	Madeira Rayon	Marathon Polyester	Marathon Rayon
1	8.3% (42.3 m, 10533 st.)	Bright white	1804	1003	2271	1181
2	5.3% (26.7 m, 6812 st.)	Light pearl grey	1811	1212	2300	1175
3	2.9% (14.5 m, 3582 st.)	Pewter grey	1615	1415	2112	1321
4	6.9% (34.9 m, 8964 st.)	Cream	1949	1123	2117	1348
5	7.2% (36.7 m, 9305 st.)	Dune cream	1723	1066	2123	1131
6	0.9% (4.4 m, 1046 st.)	Lemon	1924	1223	2019	1008
7	4.4% (22.5 m, 5632 st.)	Mango orange	1755	1155	2048	1041
8	5.2% (26.6 m, 6698 st.)	Sahara cream	1670	1070	2288	1302
9	2.2% (10.9 m, 2804 st.)	Light moss green	1940	1450	2027	1122
10	7.5% (38.1 m, 9893 st.)	Gingerbread brown	1855	1338	2032	1186
11	8.8% (44.9 m, 12185 st.)	Papaya orange	1678	1078	2152	1046
12	8.2% (41.7 m, 10845 st.)	Otter brown	1657	1056	2283	1144
13	6.4% (32.3 m, 8394 st.)	Cigar brown	1857	1258	2291	1307
14	6.9% (35.0 m, 9195 st.)	Cappuccino brown	1872	1230	2130	1307
15	7.1% (35.9 m, 9539 st.)	Japanese red	1839	1481	2132	1243
16	11.9% (60.4 m, 15613 st.)	Black	1800	1006	2150	1180

Upper thread 507.7 m  
 Bobbin 169.2 m

Note: These are the closest threads Embird 2016 was able to find. They might differ from the real colors in some cases.



Thread	Consumption	Name	Brother Embroidery	Floriani's Polyester	Hemingworth	Isacord Polyester
1	8.1% (54.3 m, 15690 st.)	Bright white	001	730	1001	0015
2	5.3% (35.6 m, 10174 st.)	Light pearl grey	005	411	1069	0150
3	3.0% (20.0 m, 5499 st.)	Pewter grey	817	485	1077	0111
4	6.8% (45.9 m, 13446 st.)	Cream	843	811	1229	0761
5	7.2% (48.4 m, 13900 st.)	Dune cream	307	741	1062	1362
6	0.9% (6.2 m, 1546 st.)	Lemon	206	544	1227	0608
7	4.4% (29.7 m, 8247 st.)	Mango orange	209	512	1139	1430
8	5.3% (35.5 m, 10037 st.)	Sahara cream	348	741	1235	1141
9	2.2% (14.5 m, 3888 st.)	Light moss green	328	283	1098	0442
10	7.6% (51.0 m, 14713 st.)	Gingerbread brown	348	451	1171	0853
11	8.6% (58.1 m, 16389 st.)	Papaya orange	030	537	1028	1701
12	8.4% (56.2 m, 15890 st.)	Otter brown	323	737	1133	1154
13	6.5% (44.1 m, 12355 st.)	Cigar brown	339	796	1238	1233
14	7.0% (47.3 m, 13490 st.)	Cappuccino brown	704	415	1131	1565
15	6.9% (46.7 m, 13000 st.)	Japanese red	800	1586	1066	1514
16	11.9% (79.9 m, 22268 st.)	Black	707	436	1079	1776

Upper thread 673.4 m  
 Bobbin 224.5 m

Note: These are the closest threads Embird 2016 was able to find. They might differ from the real colors in some cases.



Thread	Consumption	Name	Brother Embroidery			
			Florian's Polyester	Hemingworth	Isacord Polyester	
1	8.3% (42.3 m, 10533 st.)	Bright white	001	730	1001	0015
2	5.3% (26.7 m, 6812 st.)	Light pearl grey	005	411	1069	0150
3	2.9% (14.5 m, 3582 st.)	Pewter grey	817	485	1077	0111
4	6.9% (34.9 m, 8964 st.)	Cream	843	811	1229	0761
5	7.2% (36.7 m, 9305 st.)	Dune cream	307	741	1062	1362
6	0.9% (4.4 m, 1046 st.)	Lemon	206	544	1227	0608
7	4.4% (22.5 m, 5632 st.)	Mango orange	209	512	1139	1430
8	5.2% (26.6 m, 6698 st.)	Sahara cream	348	741	1235	1141
9	2.2% (10.9 m, 2804 st.)	Light moss green	328	283	1098	0442
10	7.5% (38.1 m, 9893 st.)	Gingerbread brown	348	451	1171	0853
11	8.8% (44.9 m, 12185 st.)	Papaya orange	030	537	1028	1701
12	8.2% (41.7 m, 10845 st.)	Otter brown	323	737	1133	1154
13	6.4% (32.3 m, 8394 st.)	Cigar brown	339	796	1238	1233
14	6.9% (35.0 m, 9195 st.)	Cappuccino brown	704	415	1131	1565
15	7.1% (35.9 m, 9539 st.)	Japanese red	800	1586	1066	1514
16	11.9% (60.4 m, 15613 st.)	Black	707	436	1079	1776

Upper thread 507.7 m  
Bobbin 169.2 m

Note: These are the closest threads Embird 2016 was able to find. They might differ from the real colors in some cases.



Thread	Consumption	Name	Madeira Polyneon	Madeira Rayon	Marathon Polyester	Marathon Rayon
1	8.1% (54.3 m, 15690 st.)	Bright white	1804	1003	2271	1181
2	5.3% (35.6 m, 10174 st.)	Light pearl grey	1811	1212	2300	1175
3	3.0% (20.0 m, 5499 st.)	Pewter grey	1615	1415	2112	1321
4	6.8% (45.9 m, 13446 st.)	Cream	1949	1123	2117	1348
5	7.2% (48.4 m, 13900 st.)	Dune cream	1723	1066	2123	1131
6	0.9% (6.2 m, 1546 st.)	Lemon	1924	1223	2019	1008
7	4.4% (29.7 m, 8247 st.)	Mango orange	1755	1155	2048	1041
8	5.3% (35.5 m, 10037 st.)	Sahara cream	1670	1070	2288	1302
9	2.2% (14.5 m, 3888 st.)	Light moss green	1940	1450	2027	1122
10	7.6% (51.0 m, 14713 st.)	Gingerbread brown	1855	1338	2032	1186
11	8.6% (58.1 m, 16389 st.)	Papaya orange	1678	1078	2152	1046
12	8.4% (56.2 m, 15890 st.)	Otter brown	1657	1056	2283	1144
13	6.5% (44.1 m, 12355 st.)	Cigar brown	1857	1258	2291	1307
14	7.0% (47.3 m, 13490 st.)	Cappuccino brown	1872	1230	2130	1307
15	6.9% (46.7 m, 13000 st.)	Japanese red	1839	1481	2132	1243
16	11.9% (79.9 m, 22268 st.)	Black	1800	1006	2150	1180

Upper thread 673.4 m  
Bobbin 224.5 m

Note: These are the closest threads Embird 2016 was able to find. They might differ from the real colors in some cases.

