



# **Creative Fabrica**

**Embroidery Design  
Sewing Information**

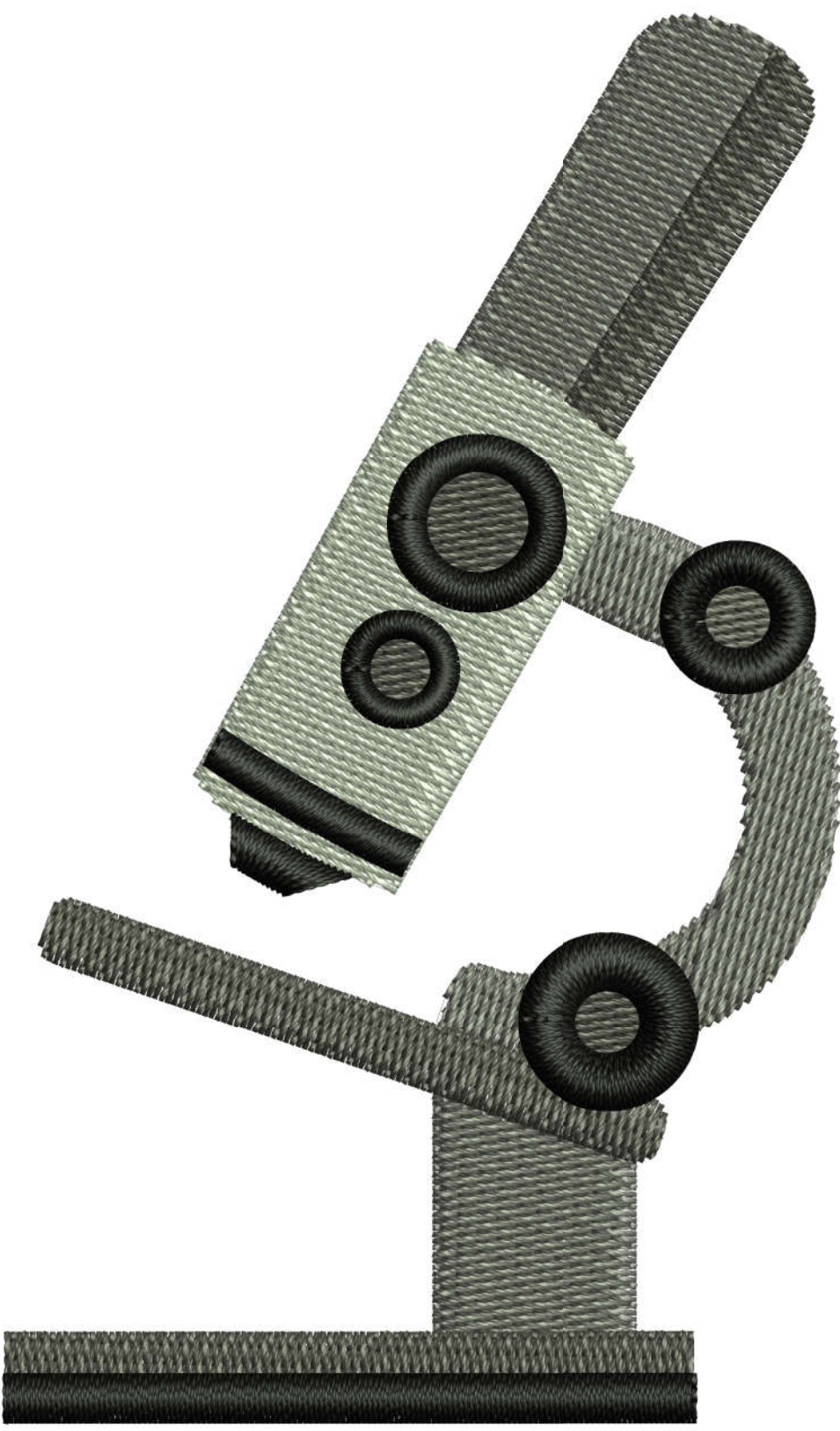
**[www.creativefabrica.com/embroidery/](http://www.creativefabrica.com/embroidery/)**

© Creative Fabrica

# Production Worksheet

Wilcom TrueSizer  
Design: E-21114 4x4  
Colorway: Madeira Classic 40

Stitches: 5868  
Colors: 4  
Height: 3.80 in  
Width: 2.24 in  
Zoom: 2.19



Machine format: Tajima  
Color changes: 3  
Stops: 4  
Trims: 15  
Auto fabric: Fabric Name  
Required stabilizer: Stabilizer  
Left: 28.5 mm  
Right: 28.5 mm  
Up: 48.2 mm  
Down: 48.2 mm  
EndX: 0.00 in  
EndY: 0.00 in  
Area: 8.51 in<sup>2</sup>  
Max Stitch: 6.9 mm  
Min Stitch: 0.4 mm  
Max jump: 7.0 mm  
Total Thread: 110.35ft  
Total bobbin: 41.60ft

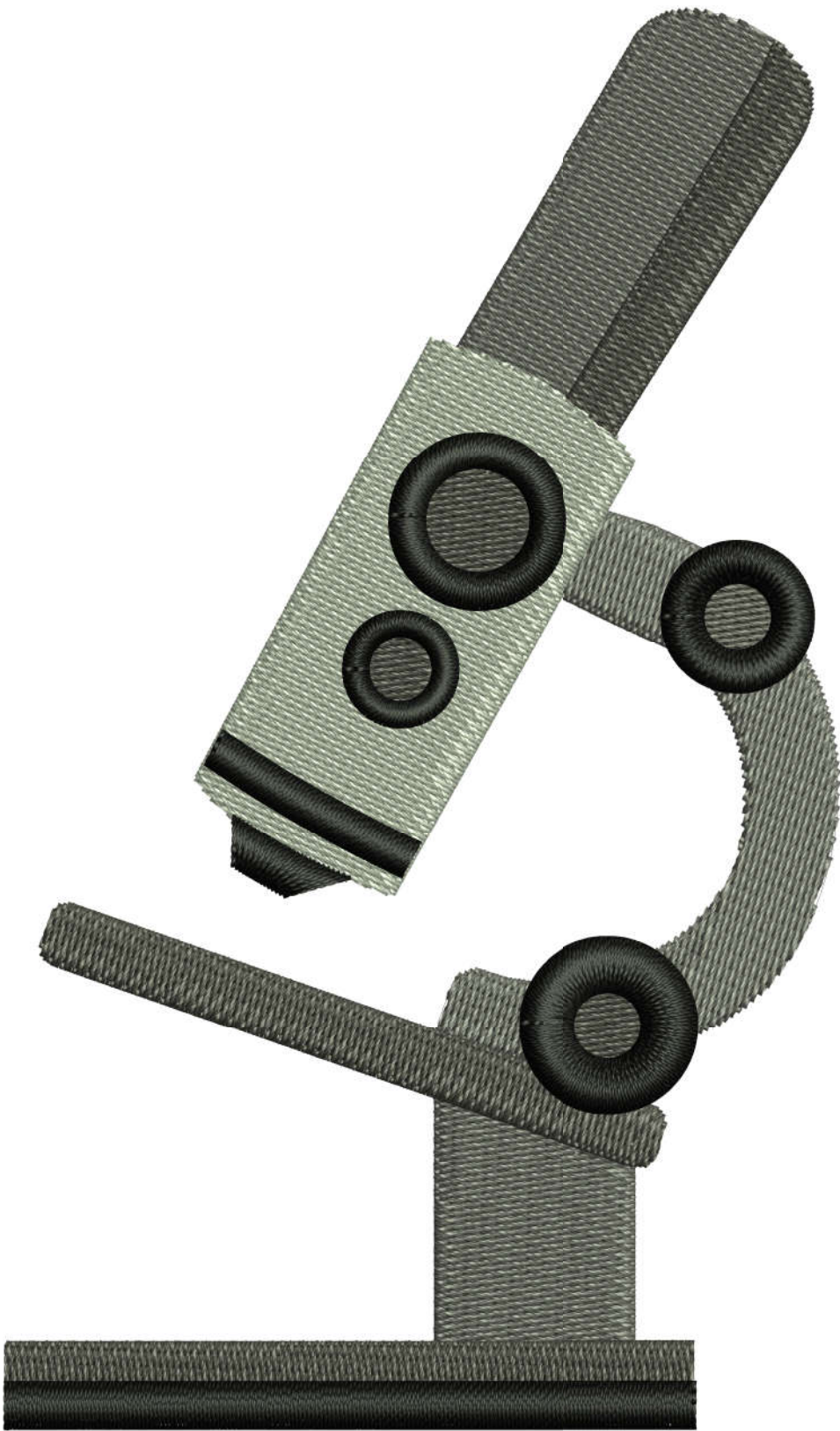
Stop Sequence:

#	N#	St.	Code	Description	Brand
1.	18	■	1594	1287 Mlde Grey	Madeira Classic 40
2.	19	■	1015	1010 Light Grey	Madeira Classic 40
3.	22	■	1869	1239 Dark Grey	Madeira Classic 40
4.	14	■	1388	1000 Emerald Black	Madeira Classic 40

# Production Worksheet

Wilcom TrueSizer  
Design: E-21114 5x5  
Colorway: Madeira Classic 40

Stitches: 9317  
Colors: 4  
Height: 4.80 in  
Width: 2.81 in  
Zoom: 1.75



Machine format: Tajima  
Color changes: 3  
Stops: 4  
Trims: 15  
Auto fabric: Fabric Name  
Required stabilizer: Stabilizer  
Left: 35.7 mm  
Right: 35.7 mm  
Up: 61.0 mm  
Down: 61.0 mm  
EndX: 0.00 in  
EndY: 0.00 in  
Area: 13.48 in<sup>2</sup>  
Max Stitch: 7.0 mm  
Min Stitch: 0.4 mm  
Max jump: 7.0 mm  
Total Thread: 184.78ft  
Total bobbin: 72.30ft

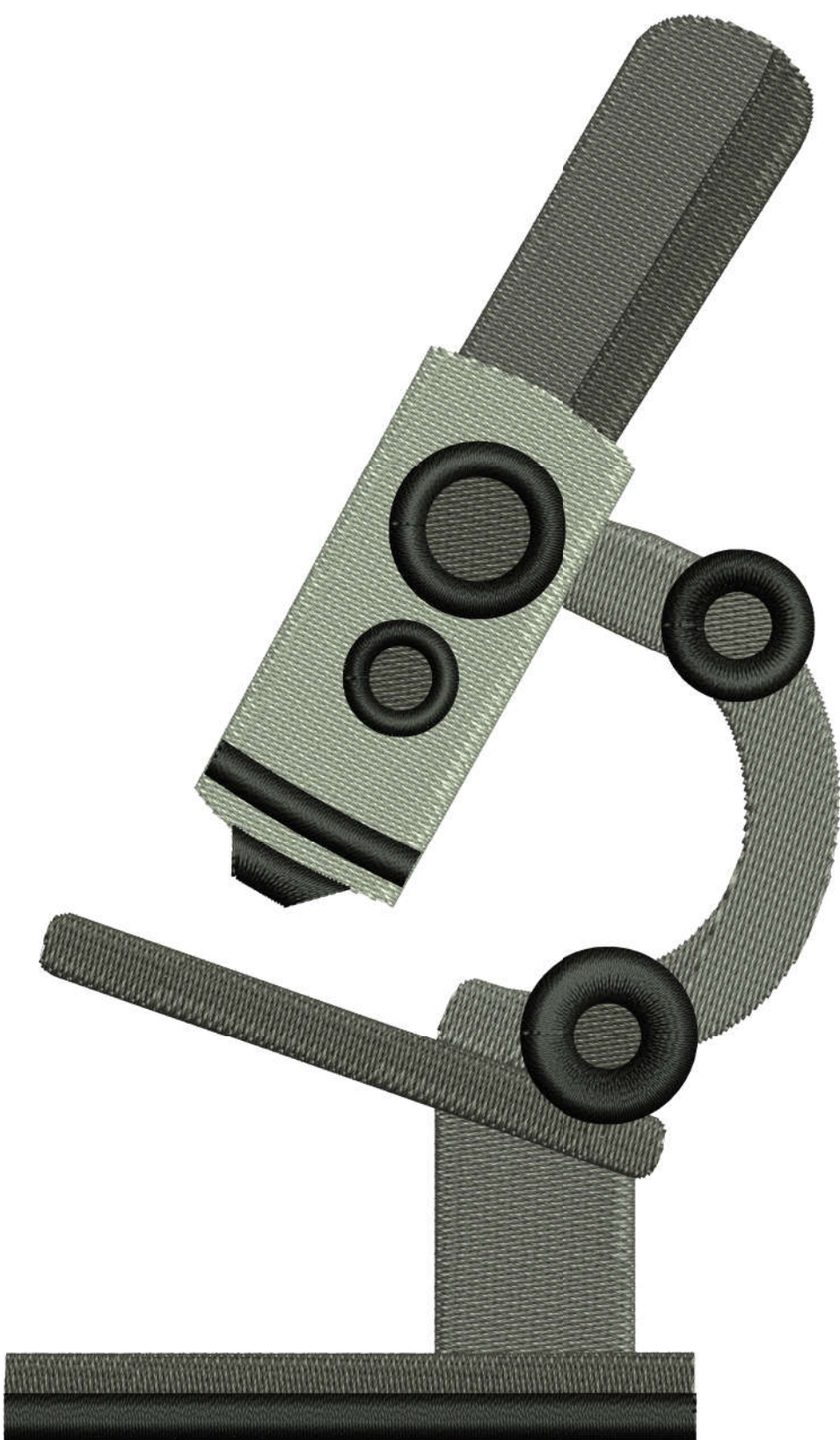
Stop Sequence:

#	N#	St.	Code	Description	Brand
1.	18	■	2673	1287 Mlde Grey	Madeira Classic 40
2.	19	■	1756	1010 Light Grey	Madeira Classic 40
3.	22	■	3069	1239 Dark Grey	Madeira Classic 40
4.	14	■	1817	1000 Emerald Black	Madeira Classic 40

# Production Worksheet

Wilcom TrueSizer  
Design: E-21114 6x6  
Colorway: Madeira Classic 40

Stitches: 12609  
Colors: 4  
Height: 5.80 in  
Width: 3.38 in  
Zoom: 1.45



Machine format: Tajima  
Color changes: 3  
Stops: 4  
Trims: 15  
Auto fabric: Fabric Name  
Required stabilizer: Stabilizer  
Left: 43.0 mm  
Right: 43.0 mm  
Up: 73.6 mm  
Down: 73.6 mm  
EndX: 0.00 in  
EndY: 0.00 in  
Area: 19.61 in<sup>2</sup>  
Max Stitch: 6.8 mm  
Min Stitch: 0.4 mm  
Max jump: 6.8 mm  
Total Thread: 259.93ft  
Total bobbin: 104.03ft

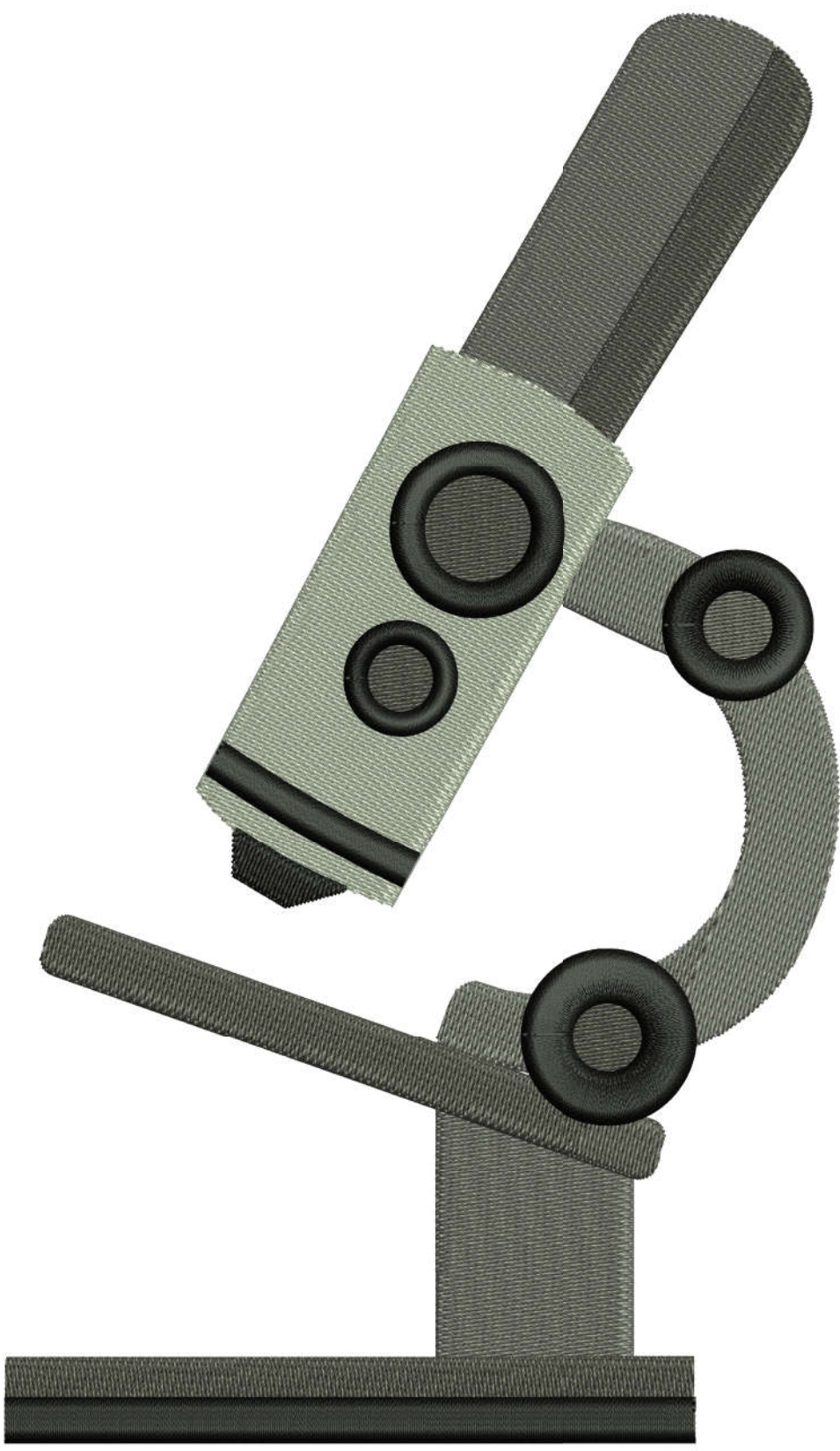
Stop Sequence:

#	N#	St.	Code	Description	Brand
1.	18	■	3648	1287 Mlde Grey	Madeira Classic 40
2.	19	■	2481	1010 Light Grey	Madeira Classic 40
3.	22	■	4129	1239 Dark Grey	Madeira Classic 40
4.	14	■	2349	1000 Emerald Black	Madeira Classic 40

# Production Worksheet

Wilcom TrueSizer  
Design: E-21114 8x8  
Colorway: Madeira Classic 40

Stitches: 20731  
Colors: 4  
Height: 7.80 in  
Width: 4.53 in  
Zoom: 1.08



Machine format: Tajima  
Color changes: 3  
Stops: 4  
Trims: 15  
Auto fabric: Fabric Name  
Required stabilizer: Stabilizer  
Left: 57.6 mm  
Right: 57.6 mm  
Up: 99.0 mm  
Down: 99.0 mm  
EndX: 0.00 in  
EndY: 0.00 in  
Area: 35.35 in<sup>2</sup>  
Max Stitch: 7.5 mm  
Min Stitch: 0.3 mm  
Max jump: 6.9 mm  
Total Thread: 453.36ft  
Total bobbin: 187.08ft

Stop Sequence:

#	N#	St.	Code	Description	Brand
1.	18	■	6147	1287 Mlde Grey	Madeira Classic 40
2.	19	■	4272	1010 Light Grey	Madeira Classic 40
3.	22	■	6704	1239 Dark Grey	Madeira Classic 40
4.	14	■	3606	1000 Emerald Black	Madeira Classic 40