



Creative Fabrica

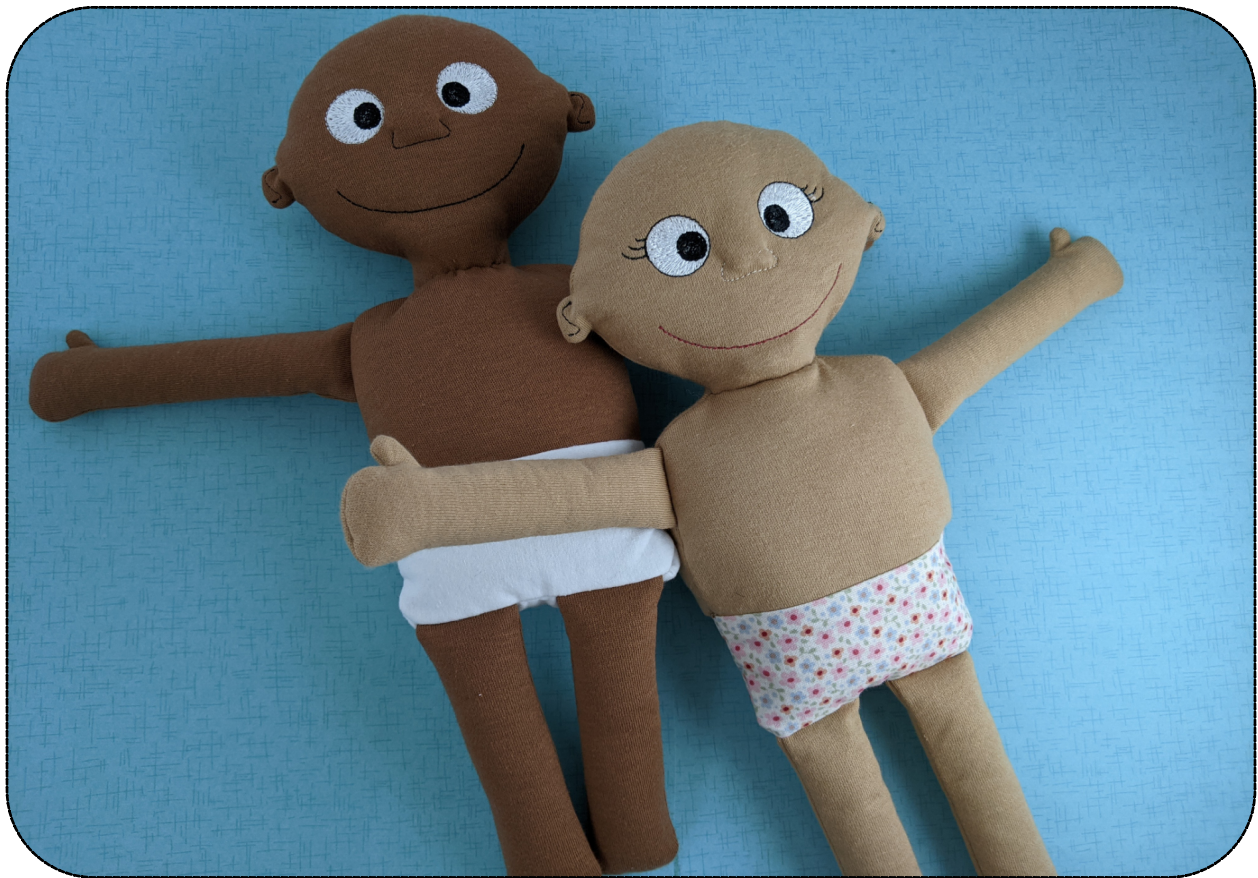
**Embroidery Design
Sewing Information**

www.creativefabrica.com/embroidery/

© Creative Fabrica

Silly Baby Rag Doll

5X7" ITH INSTRUCTIONS



For 5x7 in-the-hoop rag doll by

BALLYHOO
Creations

TEMPLATES

This Silly Baby Rag doll design comes with separate pages that include full size template and color/stitch order diagrams. These can be found at the back of this instruction document.

TOOLS NEEDED:

- Embroidery machine with 5x7 hoop (TIP - a size 14 needle may stitch better through multiple layers of fabric)
- Sharp fabric scissors
- Hemostats for turning and stuffing the doll
- Long doll needle and strong thread for closing the seam openings (or fabric glue)
- Rolled up chipboard or cardstock for inserting neck into the head
- Pins to hold the stabilizer firmly in the hoop (the T-pin trick)

SUPPLIES NEEDED:

- Doll skin fabric (see note below)
 - For limbs: 2 pieces - 8" x 6"
 - For head: 2 pieces- 6" x 6"
 - For body: 2 pieces - 7" x 7"
- Panty/diaper fabric: 2 pieces - 5" x 4" for front, 5" x 7" for back
- Embroidery thread to match your fabric, plus black and white for faces
- Polyester stuffing
- No-show mesh embroidery stabilizer, or similar lightweight cutaway stabilizer
- Scrap of water or heat soluble stabilizer to use under the face detail stitches
- Fusible stabilizer for thin or stretchy panty fabric

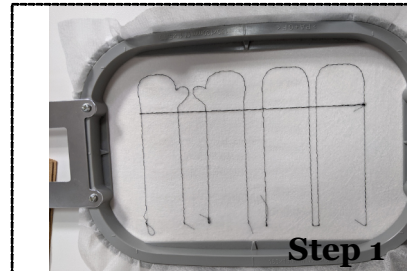
About fabric choices: This doll was tested using doll skin cotton jersey fabric lined with no-show mesh stabilizer. Other knit or woven fabrics can be used, but may change the appearance. Lining your doll with fleece or t-shirts is NOT recommended for this pattern. Other fabrics may also affect how easily the doll stitches and turns right-side-out. Please keep your fabric choices in mind when making any ITH doll. If using stretch fabric - **cut-away stabilizer MUST be used** on front and back to prevent distortion when stuffing the doll.

INSTRUCTIONS: FOR LIMBS

NOTE The “colors” on the thread list are to separate the different steps so your machine stops at the right times. Choose a thread color to match your doll fabric and use that for most of the project. Then switch to different colors when stitching the face. Multi-needle users will need to manually program stops between each “color.”

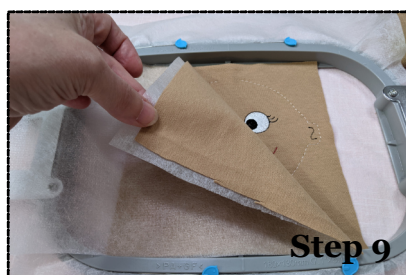
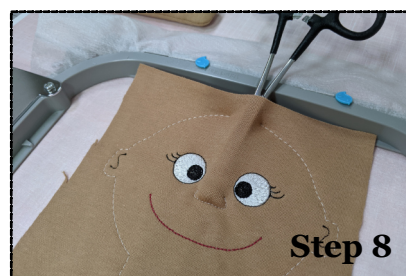
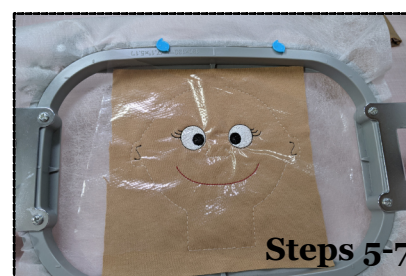
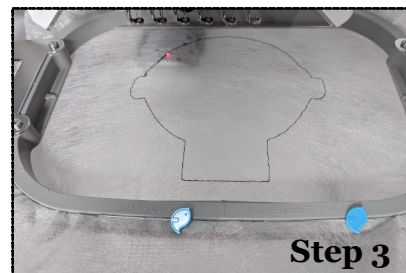
Use the file that has the word “limbs” in the filename. This will stitch all arms and legs in one hooping.

1. STITCH COLOR 1 to create a placement outline on your stabilizer.
2. Place your front fabric, RIGHT-SIDE-UP on the stabilizer to cover the placement stitches
3. STITCH COLOR 2 to tack-down the front. (this includes the cut lines for limbs which you’ll need later)
4. Place your back limb fabric, RIGHT-SIDE-DOWN, over the front piece and cover it with another piece of stabilizer.
5. STITCH COLOR 3 which creates a double stitched seam for each limb.
6. Remove the project from the machine and unhoop the limbs.
7. Cut out limbs leaving 1/8” seam allowance for knit fabric (that doesn’t fray) or 1/4” if using a woven fabric that is prone to fraying. Clip the corners around the thumb right up to the stitch line without cutting the stitches. The tack-down stitch from step 3 shows where to cut off the top of the limbs on the open side. Cut along that line to get precision placement when attaching limbs to the body later.
8. Turn limbs right-side-out.
9. Lightly stuff limbs. Over-stuffing will make them difficult to attach later on. **Leave the last 1 inch of each limb unstuffed.**



INSTRUCTIONS: FOR HEAD

- *Use the file that has the word "head" in the filename. There are 2 head files - the girl has lashes and eyeliner, the boy does not.*
1. Hoop some no-show mesh or other cutaway stabilizer in your hoop. Use T-pins or other large headed pin between the inner and outer hoop to hold the stabilizer in place. (see photo) If your thin stabilizer slips in the hoop during stitching, the eye outlines will not match up with the eye whites. Proper stabilization is important for a quality stitch-out.
 2. STITCH COLOR 1 to create a placement outline on your stabilizer.
 3. Place your front fabric, RIGHT-SIDE-UP on the stabilizer to cover the placement stitches
 4. STITCH COLOR 2 to tack-down the front
 5. Place water or heat soluble stabilizer over the face area.
 6. STITCH the eyes, nose, mouth and ear detail.
 7. Gently tear away the topper from the face. Use a tiny amount of stuffing in the nose to add some dimension. Small hemostats or tweezers are helpful for this. The tack-down stitch has an opening at the top of the head for this reason.
 8. (Optional) if inserting a sprout of hair, place this now
 9. Place fabric for the back of the head over the face with RIGHT-SIDE-DOWN and cover this with another piece of stabilizer. Ensure all the previous tack-down stitches are covered.
 10. STITCH the last color to create double-stitched seams around the head, leaving the neck open for turning and stuffing.
 11. Cut away excess fabric from the head seam. Clip close the the corners of ears so they turn cleanly..
 12. Turn the head right-side-out, including the ears.



INSTRUCTIONS: FOR BODY - PAGE 1

Notes:

You will need to have the arms and legs stuffed and ready in order to complete the body stitch-out.

For multi-needle users, program a stop between each "color"

- *Use the file that has the word "body" in the filename.*
- 1. Hoop some no-show mesh or other cutaway stabilizer in your hoop.
- 2. STITCH COLOR 1 to create a placement outline on your stabilizer.
- 3. Place your front fabric, RIGHT-SIDE-UP on the stabilizer to cover the neck area all the way down to the waist line.
- 4. Place the panty fabric on top of the body fabric, RIGHT-SIDE-DOWN so it also ends at the waist. The bottom part of the doll outline will not have fabric on it yet. (see photo)
- 5. STITCH COLOR 2 to create a seam at the waistline.
- 6. Fold the panty fabric down so it cover the placement stitches for the bottom of the doll. You may need to tape this to hold it in place, depending on your fabric.
- 7. STITCH COLOR 3 which will tack-down the front pieces with boxes for arm and leg placement. It will then position at the left arm and put a few stitches there.



NOTE: The next steps will firmly tack the arms and legs to the front of the body. The needle will stop in the center where each limb will be stitched so you can know where to place the next limb. **DO NOT** put your hands near the needle while it is stitching! The design was digitized for minimal movement of the limbs while being stitched down. For most machines, you can place it and leave it, while the machine holds it and tacks it down.

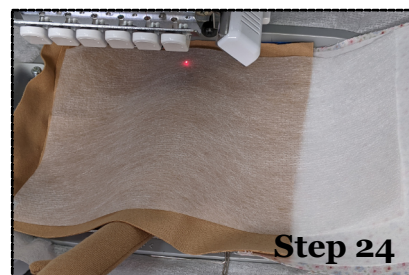
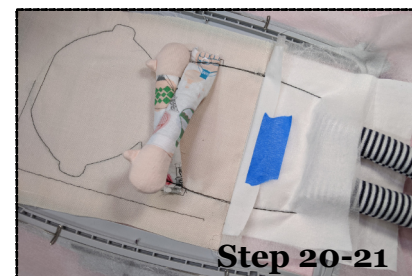
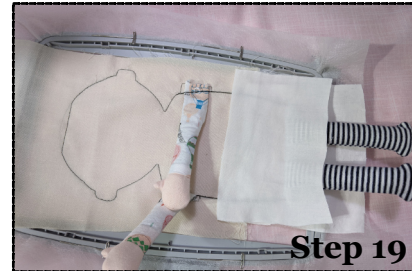
INSTRUCTIONS: FOR BODY - PAGE 2

8. Place the left arm so that the raw edge is in the left arm box. The arm will be across the body. The thumb should be pointing up towards the neck.
9. STITCH COLOR 4 to stitch the left arm to the front of the body. The machine will then stitch over to the left leg and stop.
10. Flip the left arm so it's hanging out of the hoop. (This is to prevent it from being in the way later.)
11. Place a leg in the left leg outline box, where the needle is centered. The "toe" area will be pointing towards the neck.
12. STITCH COLOR 5 to stitch the left leg to the front of the body. The machine will then stitch over to the right leg and stop.
13. Place a leg in the right leg outline box, where the needle is centered.
14. STITCH COLOR 6 to stitch the right leg to the front of the body. The machine will then stitch over to the right arm and stop.
15. Flip both legs so they're extending out of the hoop.
16. Place an arm in the right arm outline box, where the needle is centered. Thumb should be pointing up towards the neck.
17. STITCH COLOR 7 to stitch the right arm to the front of the body. Leave the right arm in place for now, with all other limbs still flipped outside the hoop.
18. Leave the legs flipped out of the hoop for now. The position of the arms can be in or out for now as long as they don't interfere with the panty area.



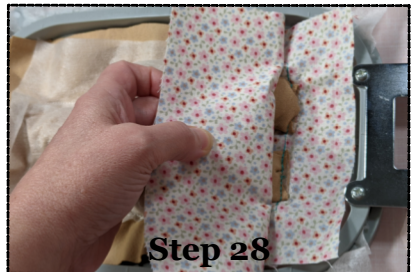
INSTRUCTIONS: FOR BODY - PAGE 3

19. Lay the back panty fabric, **RIGHT SIDE DOWN**, over the front so that the upper edge reaches the side guidelines on the tack-down body stitch. These guides are about $\frac{1}{2}$ " above the front panty seam. (Some of the photos shows the 6x10 version but these steps are the same for the 5x7)
20. **STITCH COLOR 8** to tack the right and left sides of the panty to the front.
21. Fold the top edge of the back panty down, using the side tack stitches as your folding guide. The back panty fold should match the front panty waist seam. Tape the fold to hold the fabric down.
22. Keep the right arm crossed over the body but flip the left arm out of the hoop. Place the back body fabric over the top part of the doll, **RIGHT SIDE DOWN**, overlapping the panty fabric by about 1 inch.
23. Cover the back upper fabric with no-show mesh stabilizer.
24. **STITCH COLOR 9** to stitch the right side seam of the doll. Your machine should jump to the left side when this is done. (Some machines ignore this jump command. If yours is still on the right side where it just finished stitching, manually advance to the next stitch, otherwise your machine will dislodge the arms when it stitches again.)
25. Remove hoop from machine but keep project in the hoop and place on a hard surface. Lift the back fabric and position the right arm straight down next to the seam you just stitched. Flip the left arm across the body and bend downward at elbow. Tuck both arms into the panty to hold them in place. Take care to flatten the tack-down area of the left side arm so it will stitch flat. If the left arm is bunched up in the seam area the arm will not stitch correctly.



INSTRUCTIONS: FOR BODY - PAGE 4

26. Pull the back fabric over the doll again and tape it on the left side. Check the left side to see that the seam will stitch flat and no arms are in the seam area.
27. STITCH COLOR 10 to stitch the left side seam. It will double stitch this seam and finish at the bottom left corner.
28. Remove the hoop again and carefully tuck the legs into the body cavity so they are flat. You may need to move the arms up into the neck to make this work. Once the legs are tucked in, smooth the remaining back fabric over the bottom seam area.
29. STITCH COLOR 11 to stitch the bottom seam.
30. Remove the project from the hoop.
31. Cut away excess fabric leaving $\frac{1}{4}$ seam allowance. Clip the neck corner as close to the stitched seam as you can without cutting that seam. This helps the neck turn out clean without wrinkles and pinches.



INSTRUCTIONS: FOR BODY - PAGE 5

32. Cut a slit in the back side stabilizer over the back flap where back and panty are located. Cut from one side seam to the other. (The front has the waist seam on the stabilizer, the back does not.)
33. Reach into the stabilizer slit you just cut, going between the panty and back fabric. You'll be able to access the inside of the doll from this back flap.
34. Pull the arms and legs out, and turn the doll right-side-out through the back flap.
35. Push out all the seams using a blunt object like a bone folder or the blunt end of your hemostats.

Continue to assembly steps

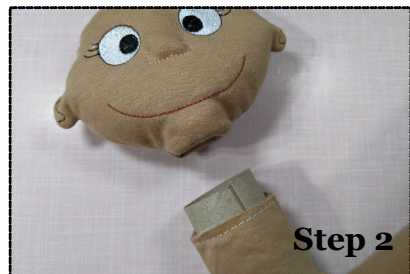
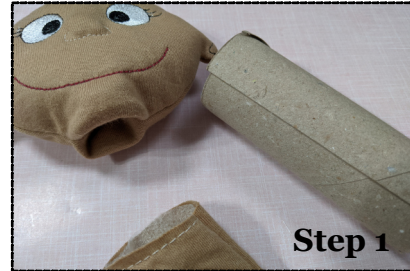


INSTRUCTIONS: ASSEMBLING THE DOLL

There are 2 parts that require hand stitching - (1) attaching the head to the body, and then (2) closing the back flap. Both can use the ladder stitch shown at the back of these instructions.

1. On the doll's head - tuck the neck inside the head and stuff the top of the head.
2. Use some stiff chipboard or cardstock as a tool for attaching the head. Form a tube from this stiff card and slide it through the body's neck and into the head. (this will be removed later)
3. Line up the side seams and pin the head to the neck to hold it in place. You can snug the head all the way to the shoulder area, or leave some neck showing.
4. Hand stitch the head to the neck using a doll needle and strong thread. Refer to the ladder stitch at the end of these instructions. (or watch the video tutorial) The cardboard inside the neck makes it easier to catch the fabric and stabilizer layers to get a smooth hand-sewn seam.
5. After the head is attached, remove the cardboard.
6. Finish stuffing the head and body through the back flap.
7. When you're happy with the stuffing, tuck the back "skin" fabric into the panty and pin in place.
8. Hand stitch (ladder stitch) the back flap to the back body with a doll needle and strong thread.

Your doll is finished!!



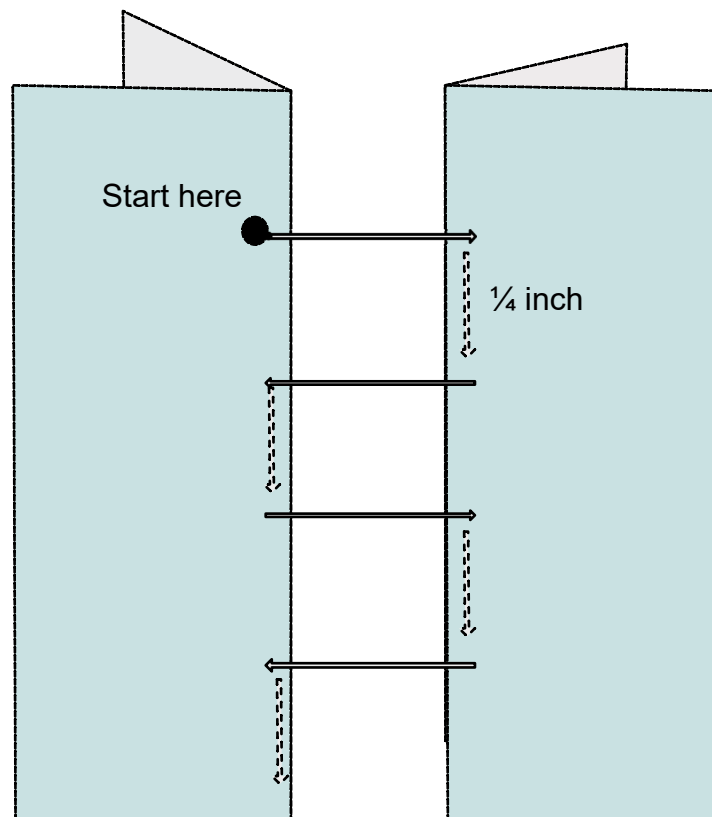
INSTRUCTIONS: 1TH T-SHIRT

1. Hoop some tear-away stabilizer in a 5x7 hoop or larger
2. STITCH COLOR 1 to create a placement guide for your fabric. Note the arrow for stretch.
3. Place your stretch fabric so that the bottom half of it covers the placement stitches, and the top half extends out of the hoop over the shoulder area.
4. STITCH COLOR 2 which tacks-down the front and creates a fold line at the shoulders.
5. OPTIONAL - If you want to add your own design to the T-shirt, do it at this point.
6. Fold the top of the shirt fabric down to cover the tack-down stitches you just created.
7. STITCH COLOR 3 to stitch the side seams of the shirt.
8. Remove from hoop and cut away the sides and bottom by cutting on the placement lines (you'll see them on the stabilizer side) Do not cut the fold line at the shoulders!
9. The tack-down from step 4 has a neckline guide. You can use scissors to cut the neckline open with that guide, or create your own neckline.
10. After the neckline is cut, gently pull away the basting stitch from the shoulders.
11. Tear-away the stabilizer. Be careful not to dislodge the seams. It's easier to remove the center area, then come back and remove the thin strips from the seam allowances.
12. Turn the shirt RIGHT SIDE OUT.
13. You may leave the edges raw. Or they can be turned under and hand stitched, or use 1/4" seam tape to turn them under for a cleaner look.
14. Put the shirt on the doll. If your fabric is not stretchy enough to fit over the doll head, you can cut it open a bit more and add a snap closure (optional)



Ladder stitch:

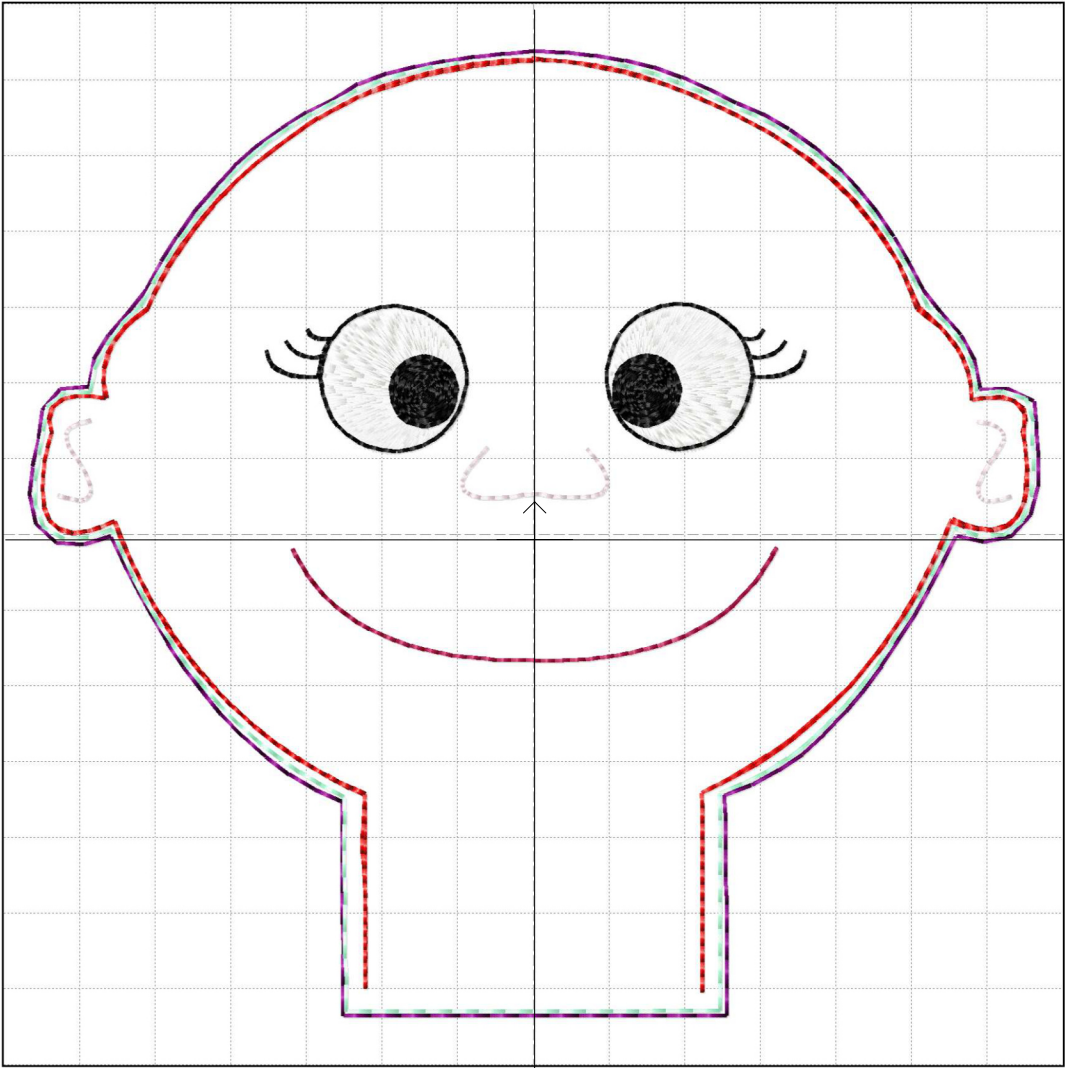
1. Thread a long needle with a double layer of strong thread that is about 12" long and tie a knot at the end.
2. Starting at the inside of the doll - push the needle and thread from the inside to the outside at one end of the seam opening.
3. Take a horizontal stitch across the seam opening and insert the needle again, it should come out about $\frac{1}{4}$ " down that same side. If you have stabilizer under your fabric, be sure to catch the stabilizer in your stitch.
4. Then do another horizontal stitch going the opposite direction across the seam opening.
5. Repeat this stitch pattern. It resembles railroad tracks. The horizontal arrows in the diagram are stitches on top of the fabric, while the vertical dashed arrows are underneath and not seen.
6. When you pull on the thread, it should pull the opposite sides together to close the gap.
7. When you have stitched the entire seam, make a knot in the thread and then push the needle back into the doll to come out a few inches away and cut the thread so it disappears back inside the doll stuffing areas. Now your thread is secure and buried where nobody can see it.



BC-5x7-ITHsillybaby-head-girl_070521
133.4x127.3 mm (5.25x5.01")
3349 st



<div>1. Placement</div>	<div>124st.</div> <div>2. Tackdown 1</div>	<div>132st.</div> <div>3. White</div>	<div>1654st.</div> <div>4. Black</div>	<div>821st.</div> <div>5. Red</div>	<div>127st.</div> <div>6. Pink</div>	<div>90st.</div>
<div>401st.</div> <div>7. Head Seam</div>						


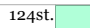




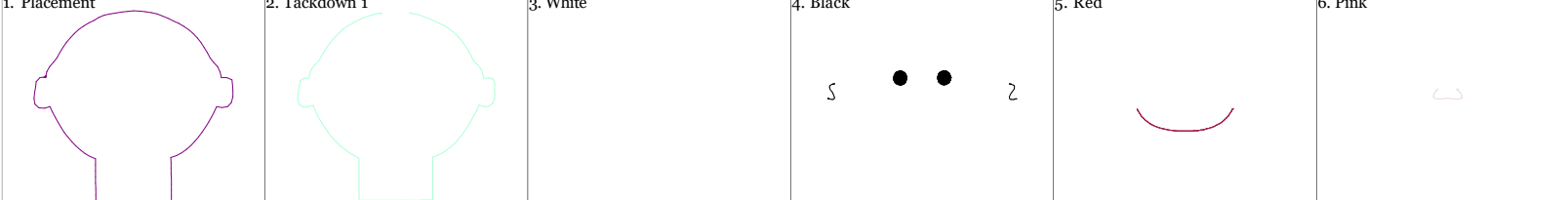




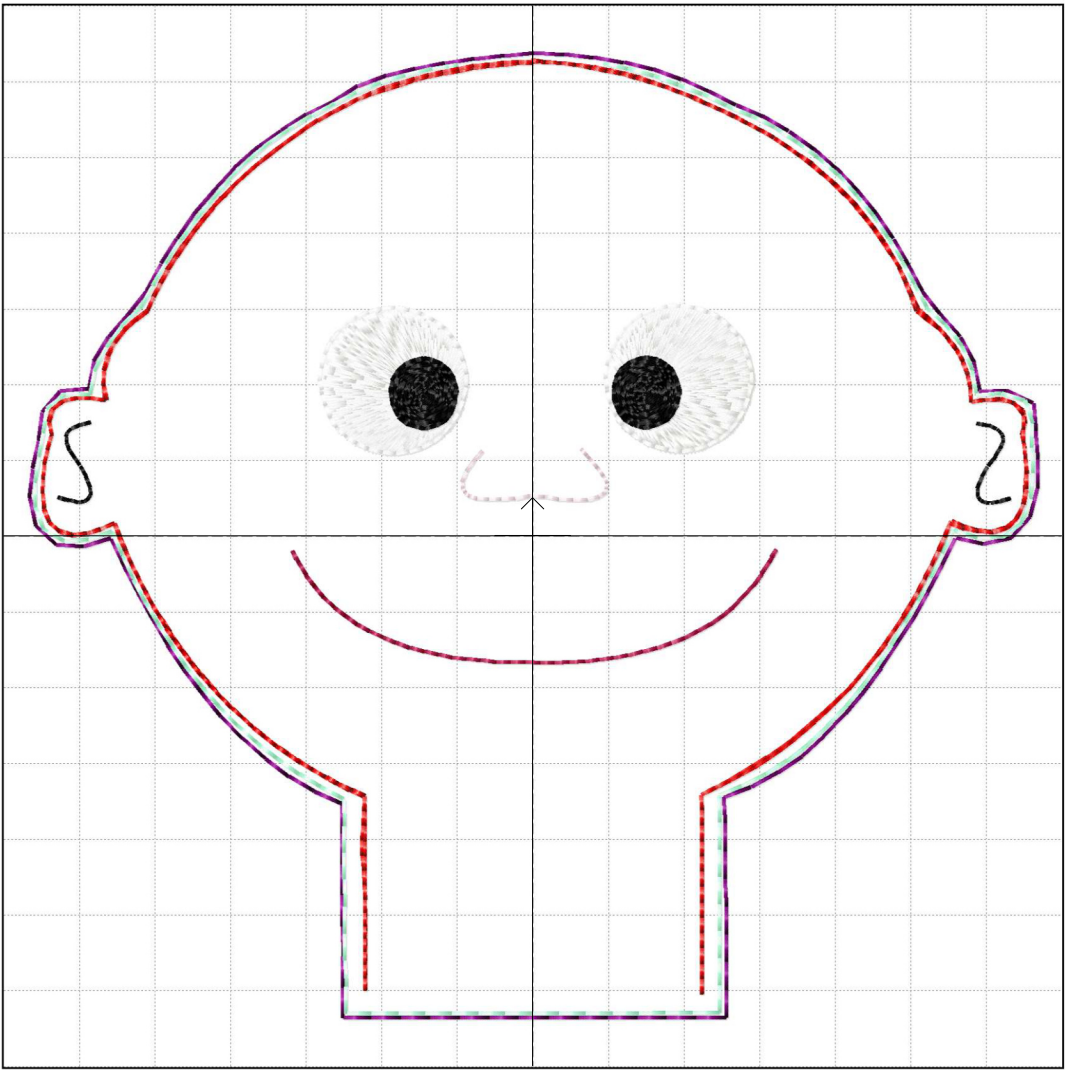
BC-5x7-ITHsillybaby-head-boy-070521

133.4x127.3 mm (5.25x5.01")

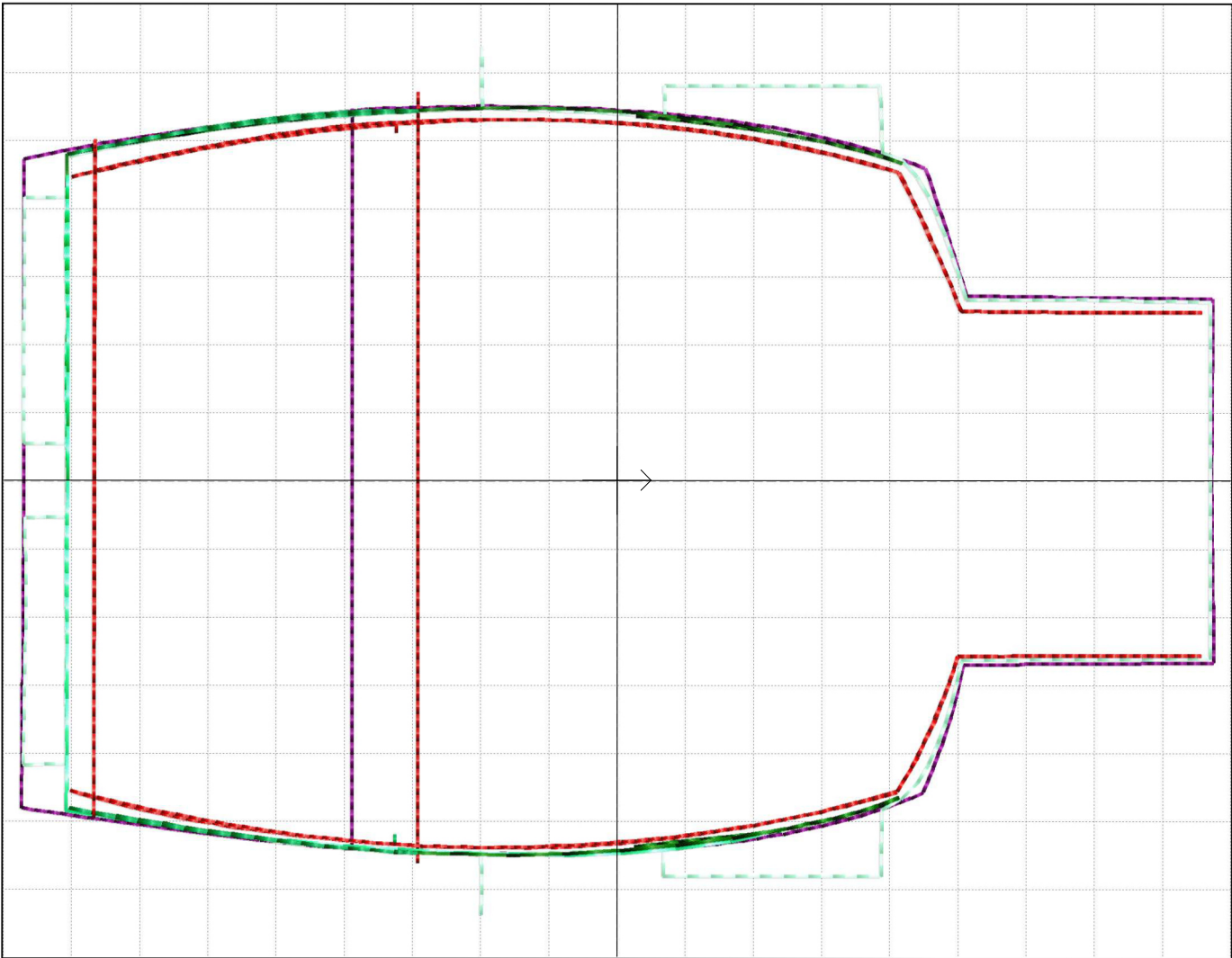
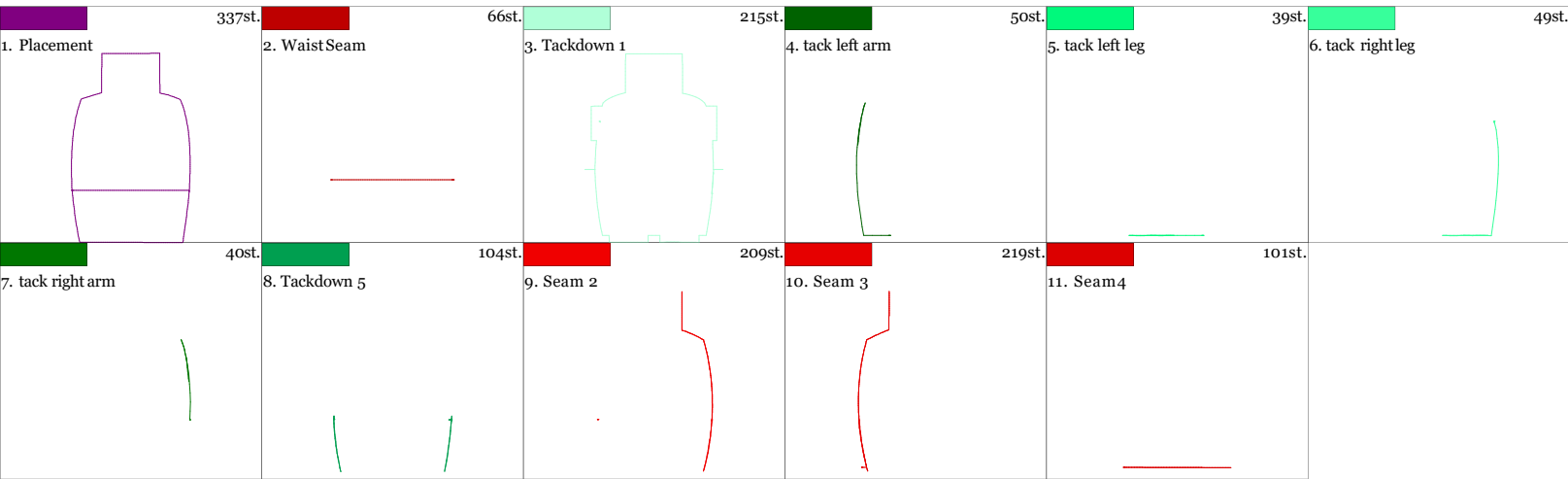
3233 st



 1. Placement	 124st. 2. Tackdown 1	 132st. 3. White	 1722st. 4. Black	 691st. 5. Red	 128st. 6. Pink	 358st.
						
 7. Head Seam	 401st.					
						



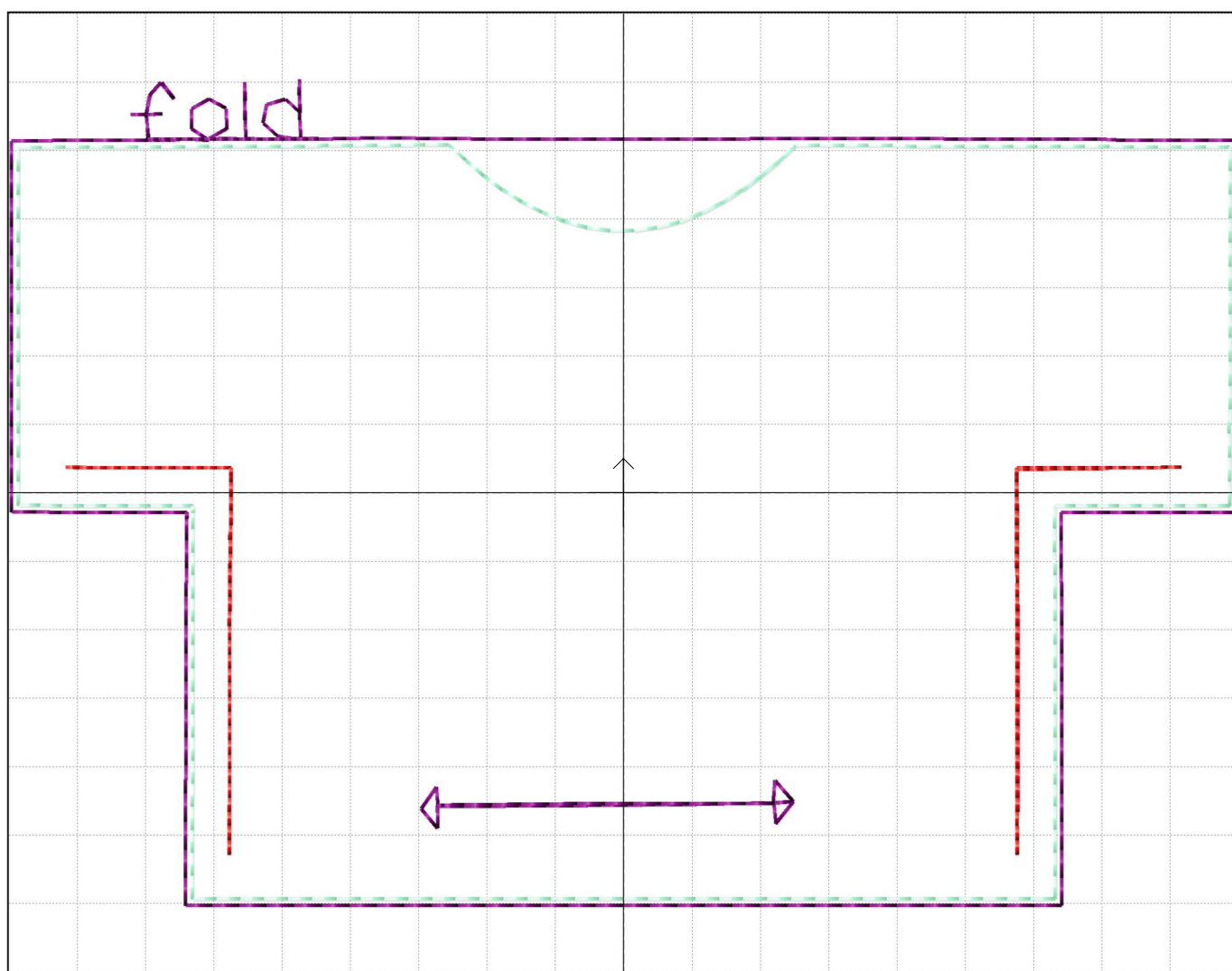
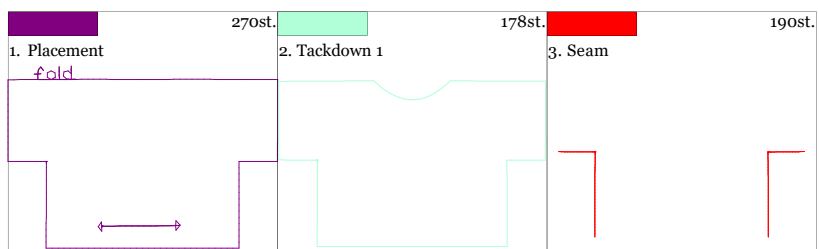
BC-5x7-ITHsillybaby-body-071021
127.7x174.9 mm (5.03x6.89")
1429 st



BC-5x7-ITH_ragdoll_t-shirt_07102

179.4x 120.8 mm (7.06 x 4.76")

638 stitches



BC-5x7-ITHsillybaby-limbs-071021
128.9x178.9 mm (5.07x7.04 ")
2051 stitches

