



Creative Fabrica

**Embroidery Design
Sewing Information**

www.creativefabrica.com/embroidery/

© Creative Fabrica

Production Worksheet

Wilcom EmbroideryStudio – Designing

Design: **DBG_Realistic-Bee-Split-4x4**

Title:

Stitches: 8,370
Height: 91.7 mm
Width: 95.4 mm
Colors: 6
Colorway: Color Stop Steps
Zoom: 1.91

designed by
geeks

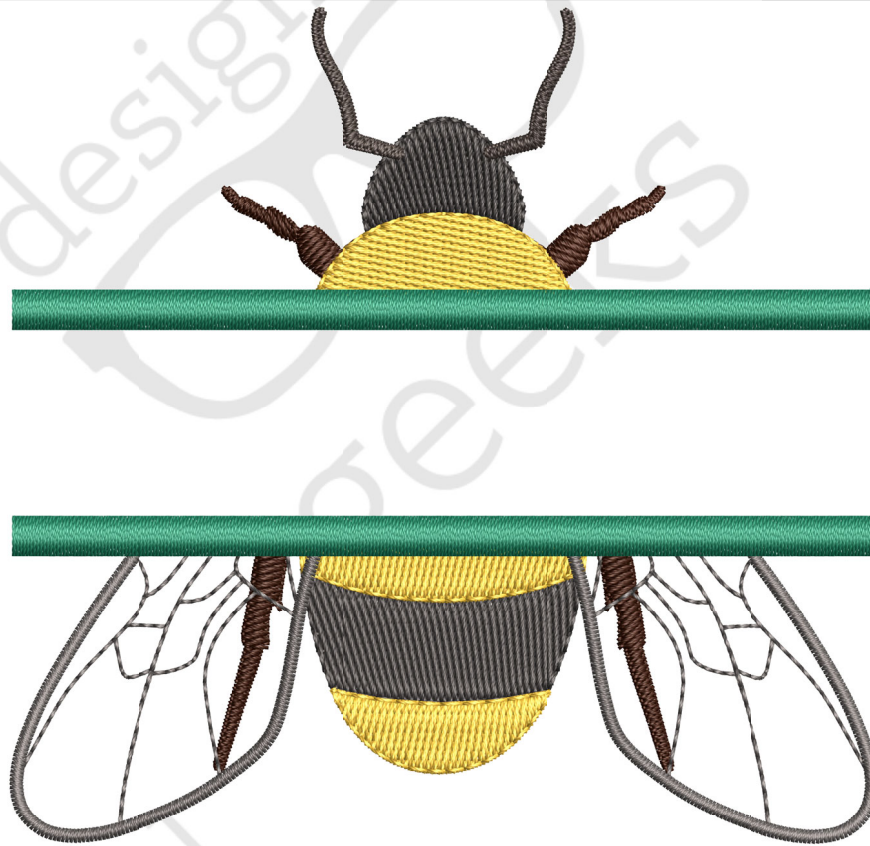
This design is optimized for 100% cotton fabric with two sheets of tear away stabilizer. If you are stitching this design on a different fabric, please adjust your stabilizer accordingly.

All designs created by Designed by Geeks, LLC are the sole property of Designed by Geeks, LLC.

Machine format: Janome
Color changes: 5
Stops: 6
Trims: 13
Fabric: Pure Cotton
Required stabilizer: Topping:
Backing: Tear Away x 2
Appliqués: 0
Total thread: 42.23m
Total bobbin: 14.75m

Stop Sequence:

#	Color	St.	Code	Name
1.		1,442		Legs
2.		1,327		Body Fill
3.		586		Antennae
4.		1,465		Yellow
5.		2,318		Wings
6.		1,232		Split



Authors: Designed by Geeks

Design last saved : 7/14/2021 3:14:54 PM

Date printed: 7/14/2021 3:14:57 PM

Page 1 of 2

Color Film

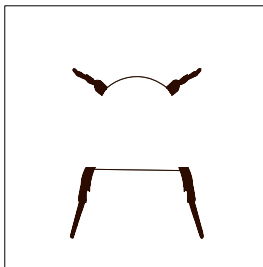
Wilcom EmbroideryStudio – Designing

Design: **DBG_Realistic-Bee-Split-4x4**

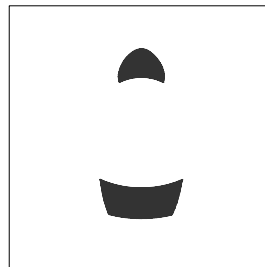
Title:

Stitches: 8,370
Height: 91.7 mm
Width: 95.4 mm
Colors: 6
Colorway: Color Stop Steps
Zoom: 0.55

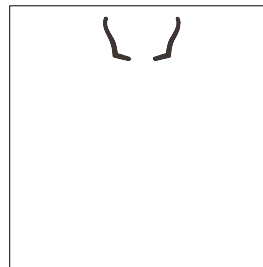
designed by
geeks



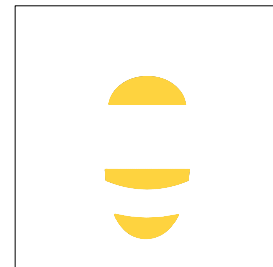
Stop #: 1
Element:
Code:
Name: Legs
Chart:
Stitches: 1,442
Thread used: 5.39m



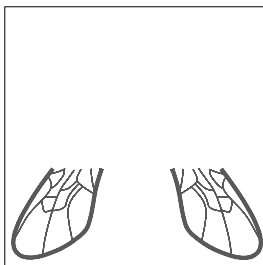
Stop #: 2
Element:
Code:
Name: Body Fill
Chart:
Stitches: 1,327
Thread used: 7.44m



Stop #: 3
Element:
Code:
Name: Antennae
Chart:
Stitches: 586
Thread used: 1.91m



Stop #: 4
Element:
Code:
Name: Yellow
Chart:
Stitches: 1,465
Thread used: 8.18m



Stop #: 5
Element:
Code:
Name: Wings
Chart:
Stitches: 2,318
Thread used: 9.60m



Stop #: 6
Element:
Code:
Name: Split
Chart:
Stitches: 1,232
Thread used: 9.11m

Authors: Designed by Geeks

Design last saved : 7/14/2021 3:14:54 PM

Date printed: 7/14/2021 3:14:57 PM

Page 2 of 2

Production Worksheet

Wilcom EmbroideryStudio – Designing

Design: **DBG_Realistic-Bee-Split-5x7**

Title:

Stitches: 12,206
Height: 125.2 mm
Width: 130.1 mm
Colors: 6
Colorway: Color Stop Steps
Zoom: 1.40

designed by
geeks

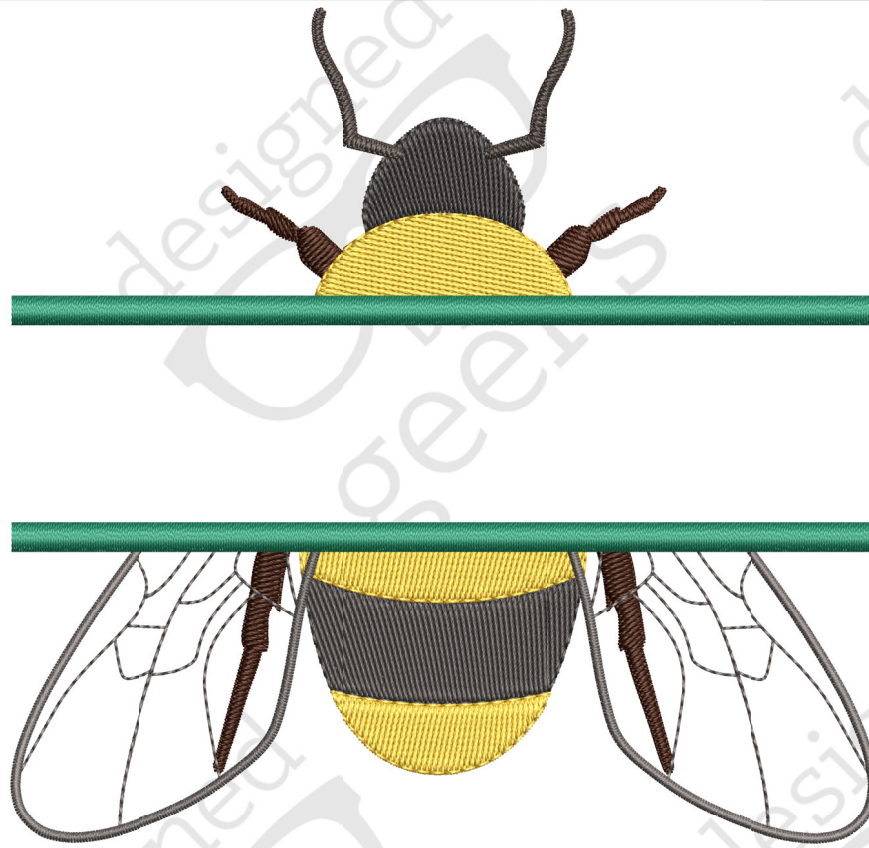
This design is optimized for 100% cotton fabric with two sheets of tear away stabilizer. If you are stitching this design on a different fabric, please adjust your stabilizer accordingly.

All designs created by Designed by Geeks, LLC are the sole property of Designed by Geeks, LLC.

Machine format: Janome
Color changes: 5
Stops: 6
Trims: 16
Fabric: Pure Cotton
Required stabilizer: Topping:
Backing: Tear
Away x 2
Appliqués: 0
Total thread: 64.16m
Total bobbin: 23.20m

Stop Sequence:

#	Color	St.	Code	Name
1.	Dark Brown	2,029		Legs
2.	Dark Brown	2,192		Body Fill
3.	Dark Brown	832		Antennae
4.	Yellow	2,387		Yellow
5.	Dark Brown	3,094		Wings
6.	Green	1,672		Split



Authors: Designed by Geeks

Design last saved : 7/14/2021 3:21:50 PM

Date printed: 7/14/2021 3:21:53 PM

Page 1 of 2

Color Film

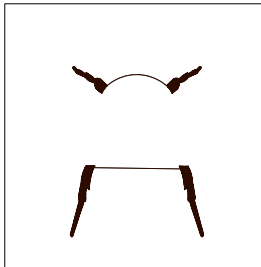
Wilcom EmbroideryStudio – Designing

Design: **DBG_Realistic-Bee-Split-5x7**

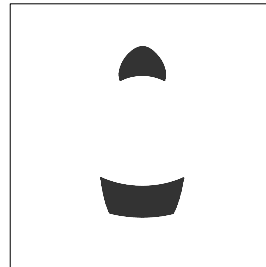
Title:

Stitches: 12,206
Height: 125.2 mm
Width: 130.1 mm
Colors: 6
Colorway: Color Stop Steps
Zoom: 0.41

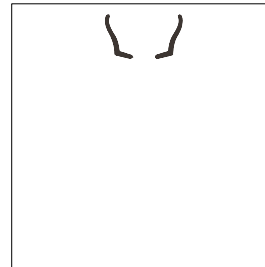
designed by
geeks



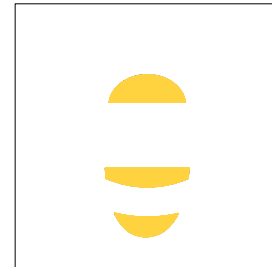
Stop #: 1
Element:
Code:
Name: Legs
Chart:
Stitches: 2,029
Thread used: 8.21m



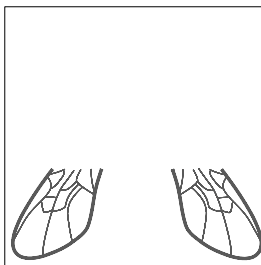
Stop #: 2
Element:
Code:
Name: Body Fill
Chart:
Stitches: 2,192
Thread used: 12.96m



Stop #: 3
Element:
Code:
Name: Antennae
Chart:
Stitches: 832
Thread used: 2.87m



Stop #: 4
Element:
Code:
Name: Yellow
Chart:
Stitches: 2,387
Thread used: 14.12m



Stop #: 5
Element:
Code:
Name: Wings
Chart:
Stitches: 3,094
Thread used: 12.98m



Stop #: 6
Element:
Code:
Name: Split
Chart:
Stitches: 1,672
Thread used: 12.41m

Authors: Designed by Geeks

Design last saved : 7/14/2021 3:21:50 PM

Date printed: 7/14/2021 3:21:53 PM

Page 2 of 2

Production Worksheet

Wilcom EmbroideryStudio – Designing

Design: **DBG_Realistic-Bee-Split-6x10**

Title:

Stitches: 13,386
Height: 135.2 mm
Width: 140.4 mm
Colors: 6
Colorway: Color Stop Steps
Zoom: 1.30

designed by
geeks

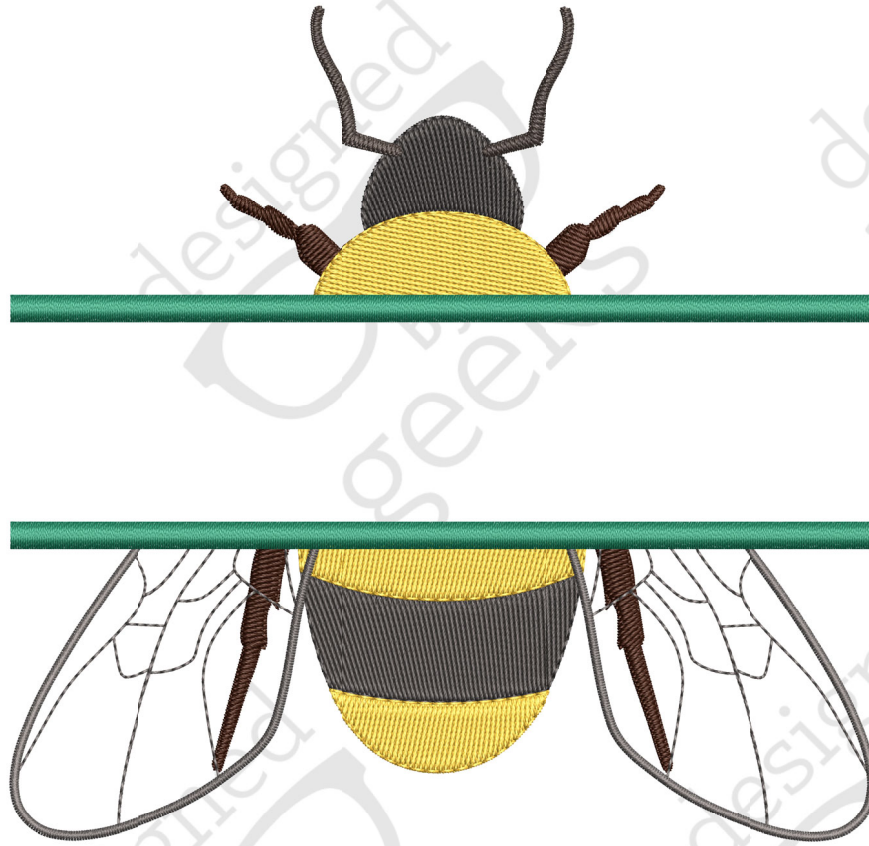
This design is optimized for 100% cotton fabric with two sheets of tear away stabilizer. If you are stitching this design on a different fabric, please adjust your stabilizer accordingly.

All designs created by Designed by Geeks, LLC are the sole property of Designed by Geeks, LLC.

Machine format: Janome
Color changes: 5
Stops: 6
Trims: 15
Fabric: Pure Cotton
Required stabilizer: Topping:
Backing: Tear
Away x 2
Appliqués: 0
Total thread: 71.28m
Total bobbin: 26.02m

Stop Sequence:

#	Color	St.	Code	Name
1.	Dark Brown	2,215		Legs
2.	Dark Brown	2,480		Body Fill
3.	Dark Brown	906		Antennae
4.	Yellow	2,696		Yellow
5.	Dark Brown	3,289		Wings
6.	Green	1,800		Split



Authors: Designed by Geeks

Design last saved : 7/14/2021 3:24:29 PM

Date printed: 7/14/2021 3:24:32 PM

Page 1 of 2

Color Film

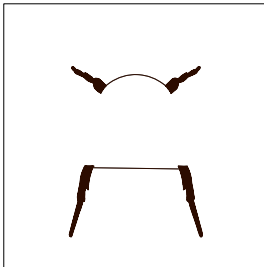
Wilcom EmbroideryStudio – Designing

Design: **DBG_Realistic-Bee-Split-6x10**

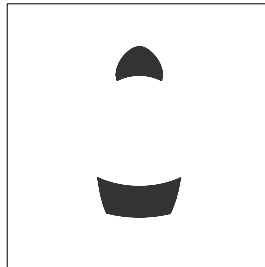
Title:

Stitches: 13,386
Height: 135.2 mm
Width: 140.4 mm
Colors: 6
Colorway: Color Stop Steps
Zoom: 0.38

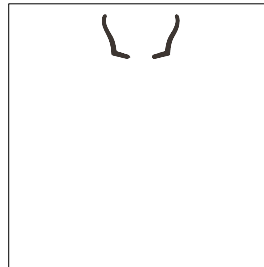
designed by
geeks



Stop #: 1
Element:
Code:
Name: Legs
Chart:
Stitches: 2,215
Thread used: 9.17m



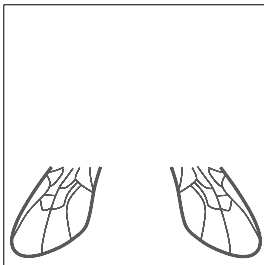
Stop #: 2
Element:
Code:
Name: Body Fill
Chart:
Stitches: 2,480
Thread used: 14.88m



Stop #: 3
Element:
Code:
Name: Antennae
Chart:
Stitches: 906
Thread used: 3.18m



Stop #: 4
Element:
Code:
Name: Yellow
Chart:
Stitches: 2,696
Thread used: 16.16m



Stop #: 5
Element:
Code:
Name: Wings
Chart:
Stitches: 3,289
Thread used: 13.90m



Stop #: 6
Element:
Code:
Name: Split
Chart:
Stitches: 1,800
Thread used: 13.39m

Authors: Designed by Geeks

Design last saved : 7/14/2021 3:24:29 PM

Date printed: 7/14/2021 3:24:32 PM

Page 2 of 2

Production Worksheet

Wilcom EmbroideryStudio – Designing

Design: **DBG_Realistic-Bee-Split-8x8**

Title:

Stitches: 20,339
Height: 188.3 mm
Width: 195.4 mm
Colors: 6
Colorway: Color Stop Steps
Zoom: 0.93

designed by
geeks

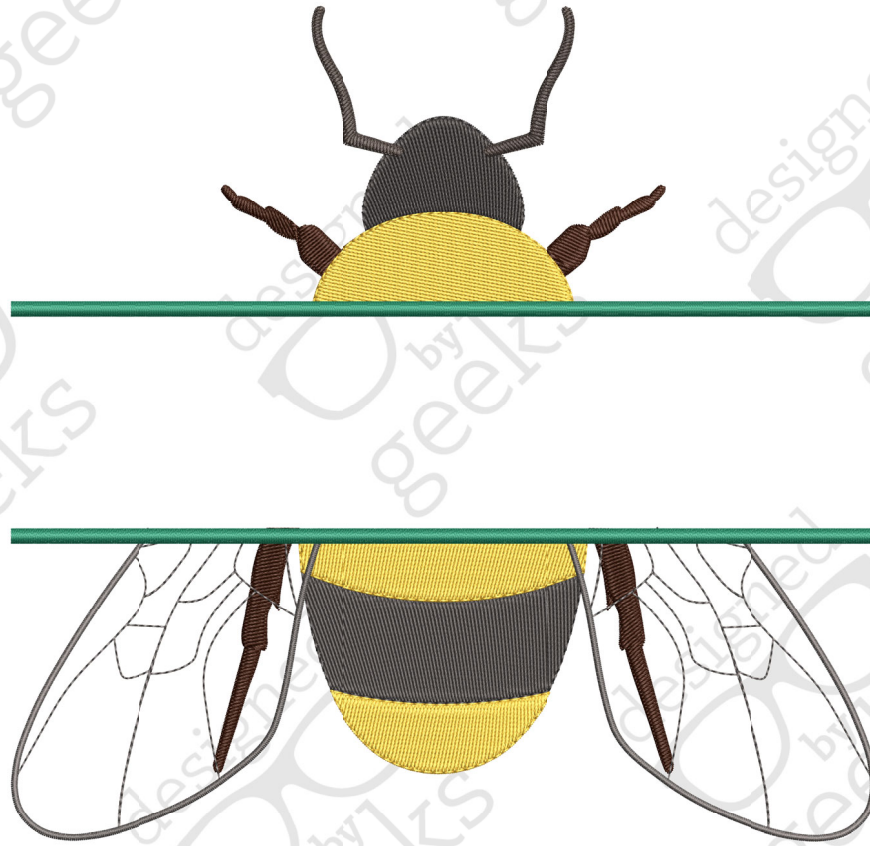
This design is optimized for 100% cotton fabric with two sheets of tear away stabilizer. If you are stitching this design on a different fabric, please adjust your stabilizer accordingly.

All designs created by Designed by Geeks, LLC are the sole property of Designed by Geeks, LLC.

Machine format: Janome
Color changes: 5
Stops: 6
Trims: 16
Fabric: Pure Cotton
Required stabilizer: Topping:
Backing: Tear
Away x 2
Appliqués: 0
Total thread: 111.32m
Total bobbin: 41.51m

Stop Sequence:

#	Color	St.	Code	Name
1.	Dark Brown	3,236		Legs
2.	Dark Brown	4,361		Body Fill
3.	Dark Brown	1,244		Antennae
4.	Yellow	4,624		Yellow
5.	Dark Brown	4,466		Wings
6.	Green	2,408		Split



Authors: Designed by Geeks

Design last saved : 7/14/2021 1:32:50 PM

Date printed: 7/14/2021 1:32:59 PM

Page 1 of 2

Color Film

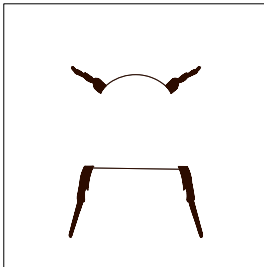
Wilcom EmbroideryStudio – Designing

Design: **DBG_Realistic-Bee-Split-8x8**

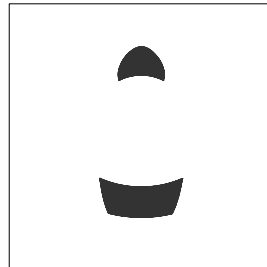
Title:

Stitches: 20,339
Height: 188.3 mm
Width: 195.4 mm
Colors: 6
Colorway: Color Stop Steps
Zoom: 0.27

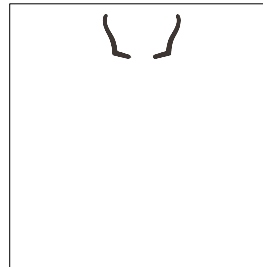
designed by
geeks



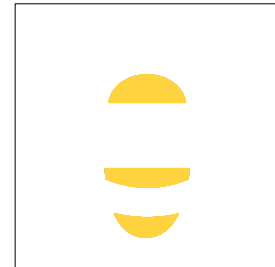
Stop #: 1
Element:
Code:
Name: Legs
Chart:
Stitches: 3,236
Thread used: 14.74m



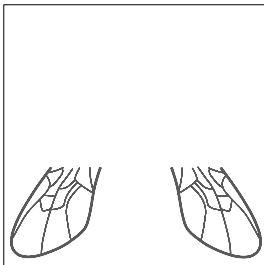
Stop #: 2
Element:
Code:
Name: Body Fill
Chart:
Stitches: 4,361
Thread used: 27.42m



Stop #: 3
Element:
Code:
Name: Antennae
Chart:
Stitches: 1,244
Thread used: 4.85m



Stop #: 4
Element:
Code:
Name: Yellow
Chart:
Stitches: 4,624
Thread used: 29.39m



Stop #: 5
Element:
Code:
Name: Wings
Chart:
Stitches: 4,466
Thread used: 19.13m



Stop #: 6
Element:
Code:
Name: Split
Chart:
Stitches: 2,408
Thread used: 15.20m

Authors: Designed by Geeks

Design last saved : 7/14/2021 1:32:50 PM

Date printed: 7/14/2021 1:32:59 PM

Page 2 of 2