



# **Creative Fabrica**

**Embroidery Design  
Sewing Information**

**[www.creativefabrica.com/embroidery/](http://www.creativefabrica.com/embroidery/)**

© Creative Fabrica

# Production Worksheet

Wilcom EmbroideryStudio - Designing

**\*91\***

Design: **91**

Title:

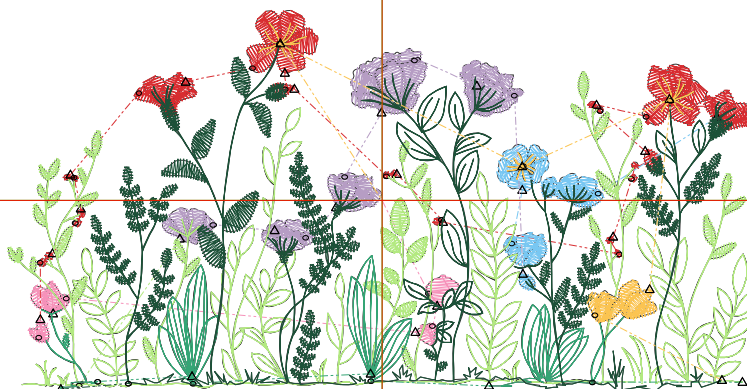
Stitches: 10,845  
 Height: 1.98 in  
 Width: 3.91 in  
 Colors: 8  
 Colorway: Colorway 1  
 Zoom: 1:1



Machine format: Tajima  
 Color changes: 7  
 Stops: 8  
 Trims: 34  
 Appliqués: 0  
 Left: 49.6 mm  
 Right: 49.6 mm  
 Up: 25.2 mm  
 Down: 25.2 mm  
 EndX: 0.00 in  
 EndY: 0.00 in  
 Area: 7.74 in<sup>2</sup>  
 Max stitch: 9.0 mm  
 Min stitch: 0.0 mm  
 Max jump: 6.6 mm  
 Total thread: 133.65ft  
 Total bobbin: 35.47ft

Stop Sequence:

#	N#	Color	St.	Code	Name	Chart
1.	8		237	2530	Rose	Isacord 40
2.	3		953	1720	Not Quite Red	Isacord 40
3.	2		433	3920	Chicory	Isacord 40
4.	7		1,081	3045	Cachet	Isacord 40
5.	6		3,248	5730	Apple Green	Isacord 40
6.	1		726	5210	Trellis Green	Isacord 40
7.	5		3,768	5326	Evergreen	Isacord 40
8.	4		397	0713	Lemon	Isacord 40



# Production Summary

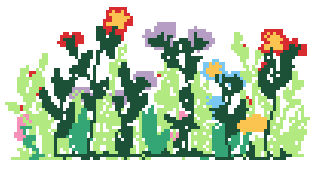
Wilcom EmbroideryStudio - Designing

**\*91\***

Design: **91**

Title:

Stitches: 12,778  
 Height: 2.49 in  
 Width: 4.91 in  
 Colors: 8



Machine format: Tajima  
 Color changes: 7  
 Stops: 8  
 Trims: 35  
 Hoop: <None>  
 Max stitch: 11.3 mm  
 Min stitch: 0.0 mm  
 Max jump: 6.7 mm

Left: 62.3 mm  
 Right: 62.3 mm  
 Up: 31.6 mm  
 Down: 31.6 mm  
 EndX: 0.00 in  
 EndY: 0.00 in  
 Area: 12.22 in<sup>2</sup>  
 Total thread: 168.52ft  
 Total bobbin: 48.62ft

Colorway		Colorway 1	
Background			
Product		Blanks\Blank	
Stop	Color	Stitches	
1	8	285	2530 Rose Isacord 40
2	3	1,148	1720 Not Quite Red Isacord 40
3	2	531	3920 Chicory Isacord 40
4	7	1,360	3045 Cachet Isacord 40
5	6	3,768	5730 Apple Green Isacord 40
6	1	836	5210 Trellis Green Isacord 40
7	5	4,360	5326 Evergreen Isacord 40
8	4	488	0713 Lemon Isacord 40

# Production Summary

Wilcom EmbroideryStudio - Designing

**\*91\***

Design: **91**

Title:

Stitches: 14,481  
 Height: 3.00 in  
 Width: 5.91 in  
 Colors: 8



Machine format: Tajima  
 Color changes: 7  
 Stops: 8  
 Trims: 37  
 Hoop: <None>  
 Max stitch: 10.9 mm  
 Min stitch: 0.0 mm  
 Max jump: 7.0 mm

Left: 75.0 mm  
 Right: 75.0 mm  
 Up: 38.1 mm  
 Down: 38.1 mm  
 EndX: 0.00 in  
 EndY: 0.00 in  
 Area: 17.70 in<sup>2</sup>  
 Total thread: 205.11ft  
 Total bobbin: 63.68ft

Colorway		Colorway 1	
Background			
Product		Blanks\Blank	
Stop	Color	Stitches	
1	8	327	2530 Rose Isacord 40
2	3	1,367	1720 Not Quite Red Isacord 40
3	2	626	3920 Chicory Isacord 40
4	7	1,663	3045 Cachet Isacord 40
5	6	4,192	5730 Apple Green Isacord 40
6	1	899	5210 Trellis Green Isacord 40
7	5	4,850	5326 Evergreen Isacord 40
8	4	555	0713 Lemon Isacord 40

# Production Summary

Wilcom EmbroideryStudio - Designing

**\*91\***

Design: **91**

Title:

Stitches: 16,468  
 Height: 3.50 in  
 Width: 6.91 in  
 Colors: 8



Machine format: Tajima  
 Color changes: 7  
 Stops: 8  
 Trims: 37  
 Hoop: <None>  
 Max stitch: 11.5 mm  
 Min stitch: 0.0 mm  
 Max jump: 7.0 mm

Left: 87.7 mm  
 Right: 87.7 mm  
 Up: 44.5 mm  
 Down: 44.5 mm  
 EndX: 0.00 in  
 EndY: 0.00 in  
 Area: 24.21 in<sup>2</sup>  
 Total thread: 246.61ft  
 Total bobbin: 80.55ft

Colorway		Colorway 1	
Background			
Product		Blanks\Blank	
Stop	Color	Stitches	
1	8	383	2530 Rose Isacord 40
2	3	1,586	1720 Not Quite Red Isacord 40
3	2	748	3920 Chicory Isacord 40
4	7	1,981	3045 Cachet Isacord 40
5	6	4,700	5730 Apple Green Isacord 40
6	1	1,008	5210 Trellis Green Isacord 40
7	5	5,432	5326 Evergreen Isacord 40
8	4	628	0713 Lemon Isacord 40

# Production Summary

Wilcom EmbroideryStudio - Designing

**\*91\***

Design: **91**

Title:

Stitches: 18,860  
 Height: 4.01 in  
 Width: 7.91 in  
 Colors: 8



Machine format: Tajima  
 Color changes: 7  
 Stops: 8  
 Trims: 37  
 Hoop: <None>  
 Max stitch: 6.9 mm  
 Min stitch: 0.0 mm  
 Max jump: 6.8 mm

Left: 100.4 mm  
 Right: 100.4 mm  
 Up: 51.0 mm  
 Down: 51.0 mm  
 EndX: 0.00 in  
 EndY: 0.00 in  
 Area: 31.72 in<sup>2</sup>  
 Total thread: 293.65ft  
 Total bobbin: 99.12ft

Colorway		Colorway 1	
Background			
Product		Blanks\Blank	
Stop	Color	Stitches	
1	8	440	2530 Rose Isacord 40
2	3	1,892	1720 Not Quite Red Isacord 40
3	2	850	3920 Chicory Isacord 40
4	7	2,309	3045 Cachet Isacord 40
5	6	5,332	5730 Apple Green Isacord 40
6	1	1,193	5210 Trellis Green Isacord 40
7	5	6,137	5326 Evergreen Isacord 40
8	4	705	0713 Lemon Isacord 40

# Production Summary

Wilcom EmbroideryStudio - Designing

**\*91\***

Design: **91**

Title:

Stitches: 21,116  
 Height: 4.52 in  
 Width: 8.91 in  
 Colors: 8



Machine format: Tajima  
 Color changes: 7  
 Stops: 8  
 Trims: 37  
 Hoop: <None>  
 Max stitch: 7.0 mm  
 Min stitch: 0.0 mm  
 Max jump: 6.9 mm

Left: 113.1 mm  
 Right: 113.1 mm  
 Up: 57.4 mm  
 Down: 57.4 mm  
 EndX: 0.00 in  
 EndY: 0.00 in  
 Area: 40.26 in<sup>2</sup>  
 Total thread: 342.37ft  
 Total bobbin: 119.22ft

Colorway		Colorway 1	
Background			
Product		Blanks\Blank	
Stop	Color	Stitches	
1	8	489	2530 Rose Isacord 40
2	3	2,243	1720 Not Quite Red Isacord 40
3	2	982	3920 Chicory Isacord 40
4	7	2,696	3045 Cachet Isacord 40
5	6	5,831	5730 Apple Green Isacord 40
6	1	1,321	5210 Trellis Green Isacord 40
7	5	6,777	5326 Evergreen Isacord 40
8	4	775	0713 Lemon Isacord 40

# Production Summary

Wilcom EmbroideryStudio - Designing

**\*91\***

Design: **91**

Title:

Stitches: 23,415  
 Height: 5.03 in  
 Width: 9.91 in  
 Colors: 8



Machine format: Tajima  
 Color changes: 7  
 Stops: 8  
 Trims: 38  
 Hoop: <None>  
 Max stitch: 7.0 mm  
 Min stitch: 0.0 mm  
 Max jump: 7.0 mm

Left: 125.8 mm  
 Right: 125.8 mm  
 Up: 63.8 mm  
 Down: 63.8 mm  
 EndX: 0.00 in  
 EndY: 0.00 in  
 Area: 49.81 in<sup>2</sup>  
 Total thread: 394.88ft  
 Total bobbin: 141.40ft

Colorway		Colorway 1	
Background			
Product		Blanks\Blank	
Stop	Color	Stitches	
1	8	544	2530 Rose Isacord 40
2	3	2,589	1720 Not Quite Red Isacord 40
3	2	1,144	3920 Chicory Isacord 40
4	7	3,055	3045 Cachet Isacord 40
5	6	6,313	5730 Apple Green Isacord 40
6	1	1,437	5210 Trellis Green Isacord 40
7	5	7,464	5326 Evergreen Isacord 40
8	4	867	0713 Lemon Isacord 40



# Production Summary

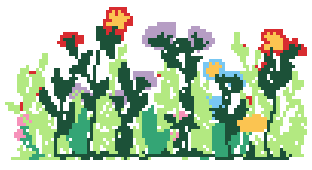
Wilcom EmbroideryStudio - Designing

**\*91\***

Design: **91**

Title:

Stitches: 27,822  
 Height: 5.54 in  
 Width: 10.91 in  
 Colors: 8



Machine format: Tajima  
 Color changes: 7  
 Stops: 8  
 Trims: 41  
 Hoop: <None>  
 Max stitch: 7.0 mm  
 Min stitch: 0.0 mm  
 Max jump: 7.0 mm

Left: 138.5 mm  
 Right: 138.5 mm  
 Up: 70.3 mm  
 Down: 70.3 mm  
 EndX: 0.00 in  
 EndY: 0.00 in  
 Area: 60.37 in<sup>2</sup>  
 Total thread: 481.84ft  
 Total bobbin: 175.80ft

Colorway		Colorway 1	
Background			
Product		Blanks\Blank	
Stop	Color	Stitches	
1	8	656	2530 Rose Isacord 40
2	3	3,102	1720 Not Quite Red Isacord 40
3	2	1,400	3920 Chicory Isacord 40
4	7	3,979	3045 Cachet Isacord 40
5	6	7,122	5730 Apple Green Isacord 40
6	1	1,576	5210 Trellis Green Isacord 40
7	5	8,976	5326 Evergreen Isacord 40
8	4	1,009	0713 Lemon Isacord 40

# Production Summary

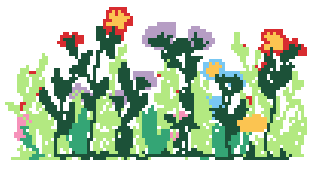
Wilcom EmbroideryStudio - Designing

**\*91\***

Design: **91**

Title:

Stitches: 30,529  
 Height: 6.04 in  
 Width: 11.91 in  
 Colors: 8



Machine format: Tajima  
 Color changes: 7  
 Stops: 8  
 Trims: 42  
 Hoop: <None>  
 Max stitch: 7.1 mm  
 Min stitch: 0.0 mm  
 Max jump: 7.0 mm

Left: 151.2 mm  
 Right: 151.2 mm  
 Up: 76.8 mm  
 Down: 76.8 mm  
 EndX: 0.00 in  
 EndY: 0.00 in  
 Area: 71.96 in<sup>2</sup>  
 Total thread: 545.60ft  
 Total bobbin: 203.05ft

Colorway		Colorway 1	
Background			
Product		Blanks\Blank	
Stop	Color	Stitches	
1	8	761	2530 Rose Isacord 40
2	3	3,475	1720 Not Quite Red Isacord 40
3	2	1,576	3920 Chicory Isacord 40
4	7	4,508	3045 Cachet Isacord 40
5	6	7,674	5730 Apple Green Isacord 40
6	1	1,711	5210 Trellis Green Isacord 40
7	5	9,698	5326 Evergreen Isacord 40
8	4	1,124	0713 Lemon Isacord 40