



# **Creative Fabrica**

**Embroidery Design  
Sewing Information**

**[www.creativefabrica.com/embroidery/](http://www.creativefabrica.com/embroidery/)**

© Creative Fabrica

# Production Worksheet

Wilcom EmbroideryStudio - Designing



Design: **pumpkin01**

Title:

Stitches: 17 766

Height: 3.05 in

Width: 3.81 in

Colors: 3

Colorway: Colorway 1

Zoom: 1:1

Machine format: Tajima

Color changes: 5

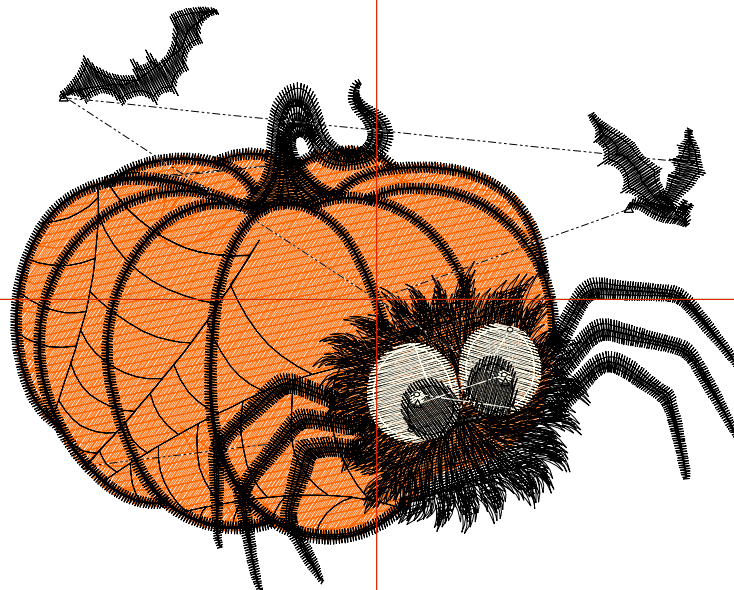
Stops: 6

Trims: 11

Thread chart: Royal

Stop Sequence:

#	N#	Color	St.	Code	Name	Chart
1.	12		5 066	C509	Orange	Royal
2.	8		11 188	C200	Black	Royal
3.	9		538	C003	Light Beige	Royal
4.	8		259	C200	Black	Royal
5.	9		65	C003	Light Beige	Royal
6.	8		648	C200	Black	Royal



# Production Worksheet

Wilcom EmbroideryStudio - Designing



Design: **pumpkin02**

Title:

Stitches: 22 571

Height: 3.85 in

Width: 4.81 in

Colors: 3

Colorway: Colorway 1

Zoom: 1:1

Machine format: Tajima

Color changes: 5

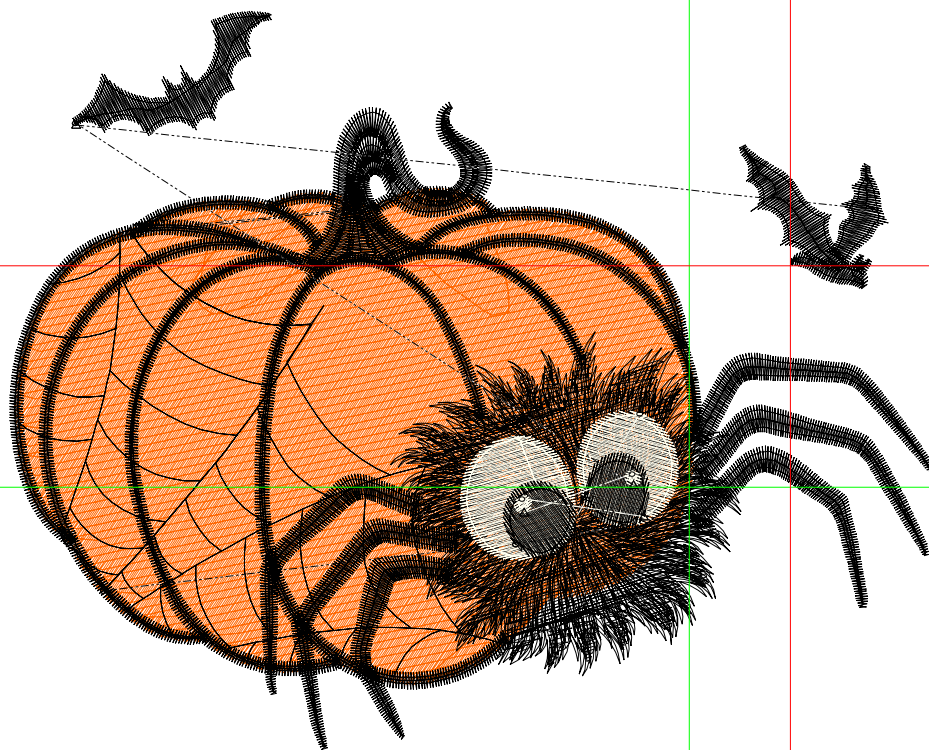
Stops: 6

Trims: 10

Thread chart: Royal

Stop Sequence:

#	N#	Color	St.	Code	Name	Chart
1.	3		7 103	C509	Orange	Royal
2.	8		13 496	C200	Black	Royal
3.	2		754	C003	Light Beige	Royal
4.	8		353	C200	Black	Royal
5.	2		68	C003	Light Beige	Royal
6.	8		795	C200	Black	Royal



# Production Worksheet

Wilcom EmbroideryStudio - Designing



Design: **pumpkin03**

Title:

Stitches: 29 114  
Height: 4.65 in  
Width: 5.81 in  
Colors: 3  
Colorway: Colorway 1  
Zoom: 1:1

Machine format: Tajima  
Color changes: 5  
Stops: 6  
Trims: 10  
Thread chart: Royal

### Stop Sequence:

#	N#	Color	St.	Code	Name	Chart
1.	3		10 195	C509	Orange	Royal
2.	8		16 157	C200	Black	Royal
3.	2		1 030	C003	Light Beige	Royal
4.	8		473	C200	Black	Royal
5.	2		74	C003	Light Beige	Royal
6.	8		1 183	C200	Black	Royal

