

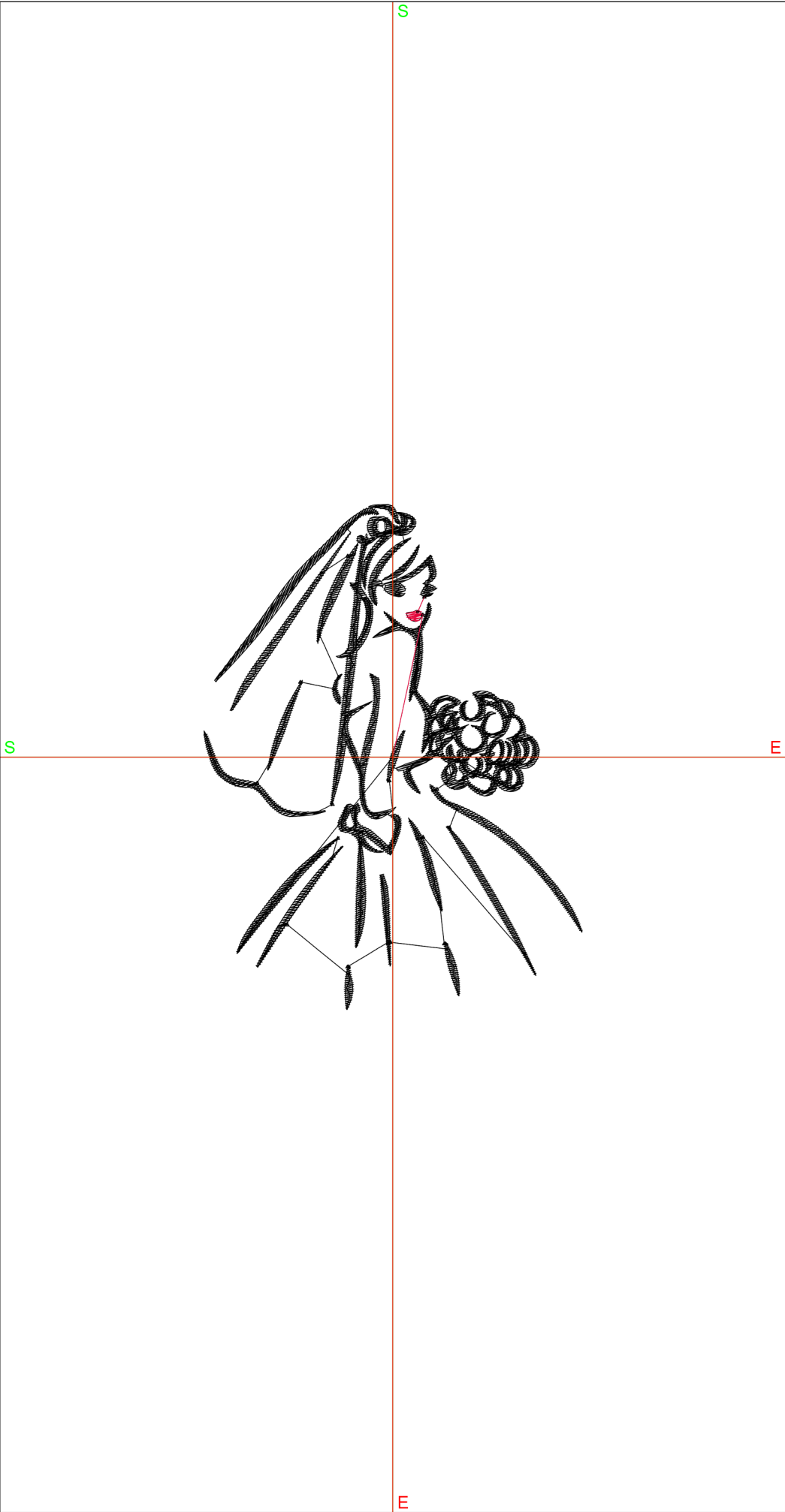


Creative Fabrica

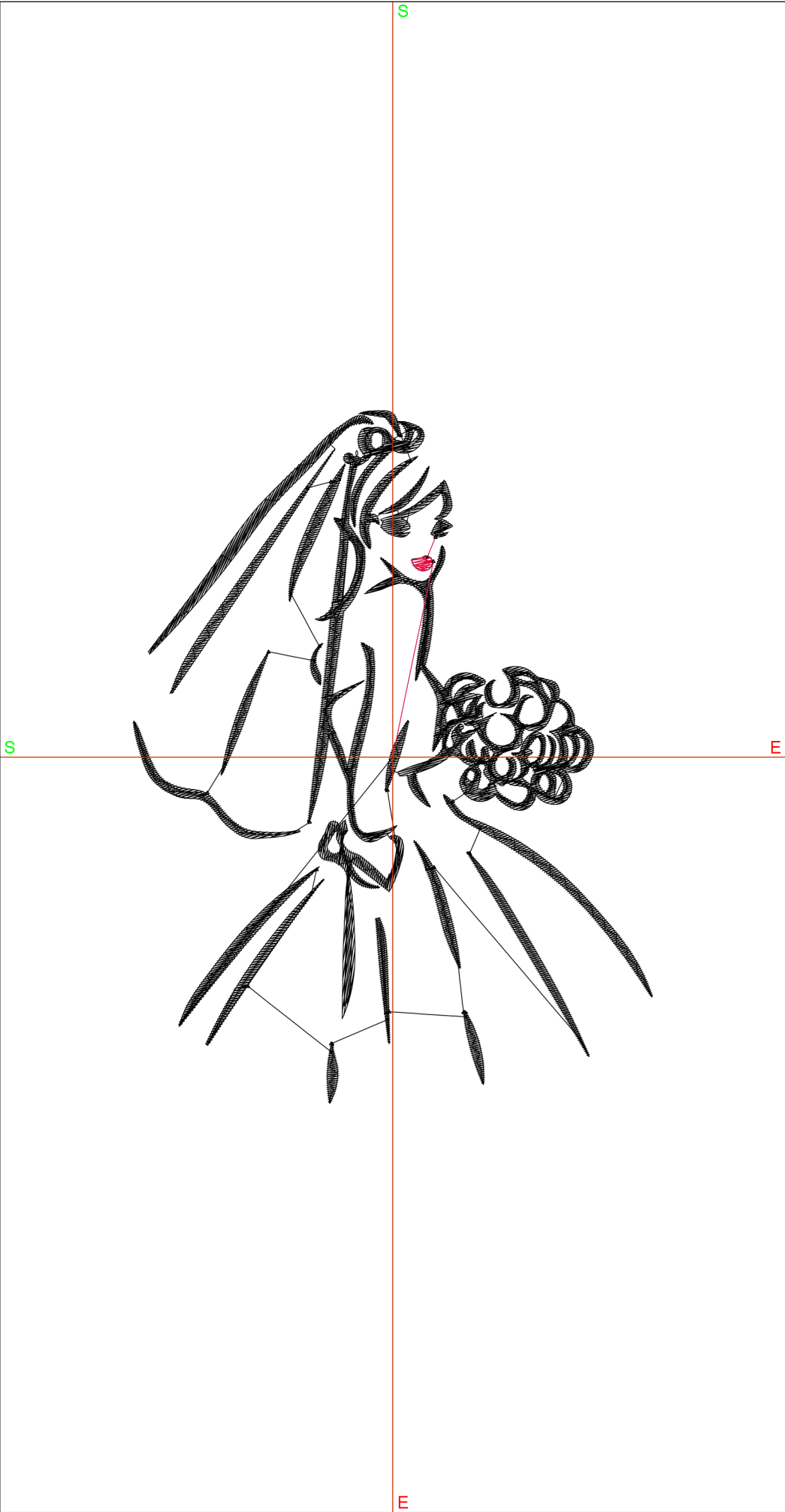
**Embroidery Design
Sewing Information**

www.creativefabrica.com/embroidery/

© Creative Fabrica



Design:s 3.5.EMB					
Height:	3.50 in				
Width:	2.62 in				
Stitches:	4,646				
Colors:	2				
Color changes:	1				
Trims:	17				
Machine format:	Janome				
Hoop:	Regular (100 x 100)				
Fabric type:	Pure Cotton				
Required stabilizer:	Topping:				
	Backing: Tear Away x 2				
Total bobbin:	18.99ft				
Color Sequence:					
#	Color	Element	Code	Name	Chart
1.	11		0020	Black	Hatch Default
2.	6		1903	Lipstick	Hatch Default



Design:s 4.8.EMB					
Height:	4.80 in				
Width:	3.60 in				
Stitches:	6,130				
Colors:	2				
Color changes:	1				
Trims:	17				
Machine format:	Janome				
Hoop:	Regular (100 x 100)				
Fabric type:	Pure Cotton				
Required stabilizer:	Topping:				
	Backing: Tear Away x 2				
Total bobbin:	31.32ft				
Color Sequence:					
#	Color	Element	Code	Name	Chart
1.	11		0020	Black	Hatch Default
2.	6		1903	Lipstick	Hatch Default



A GUIDE TO DIGITAL EMBROIDERY

WORKBOOK

OFFERED BY



You just bought an embroidery design.



What's next?

1. Check the fabric type on the print you have received.
They are usually set for pure cotton.

If you're not using pure cotton, please give us a message, and we'll send you the correct format, free of charge.

Choose between: Aida, Chiffon, Corduroy- Velvet, Crepe, Denim, Emblem, Fleecy, Generic, Hand knits, Jersey, Leather-Suede, Linen, Lycra, Mesh, Microfiber, Nylon, Pique, Poly Cotton, Polyester, Rayon, Silk Stretch Knit, Stretch terry knowing, Terry knowing, Thai silk, Wool.

OFFERED BY



2. Check the required stabilizer.

Please use the type and amount of stabilizer indicated, as it will keep puckering or stretching from occurring and ensure the success of your embroidery project.



3. How to find the correct file for your needs.

After you unzip the files received, you will find different folders sorted by size (in inches). In the folders are extensions used for different machine types. Copy the extension your machine uses to a USB stick.

OFFERED BY



If you don't know the extension used by your machine check this list:



Janome/Elna/Kenmore (*.JEF)

Janome/Elna (*.JPX)

Elna (*.EMD)

Bernina USB Stick (*.EXP)

Brother/Babylock/Deco (*.PES)

Brother/Babylock/Deco (*.PEC)

Husqvarna/ Viking/ Pfaff (*.VP3)

Husqvarna/ Viking/ Pfaff (*.VIP)

Husqvarna/ Viking/ Pfaff (*.SHV)

Husqvarna/ Viking/ Pfaff (*.HUS)

Pfaff (*.PCS)

Pfaff (*.PCD)

Pfaff (*.PCQ)

Pfaff (*.PCM)

Singer (*.XXX)

Singer/Poem/ Huskygram (*.CSD)

Melco (*.EXP)

Tajima (*.DST)

If you're still unsure, check out this link:

<https://www.embroidery.com/machine-embroidery-formats>

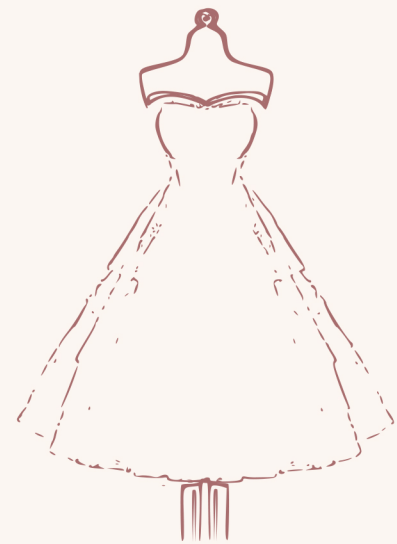
OFFERED BY



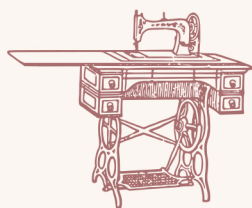
4. If you're unhappy with our sizes

Please give us a message on Etsy with your desired size, and we'll send it free of charge.

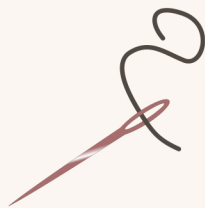
Thank you so much for your order
and for supporting a small
business!



Where to find us:



On Etsy at:
AMA Embroidery Design



Email:
amaembroiderydesign@gmail.com

OFFERED BY

