



Creative Fabrica

**Embroidery Design
Sewing Information**

www.creativefabrica.com/embroidery/

© Creative Fabrica

Production Worksheet

Wilcom EmbroideryStudio - Designing

Design: **0177-Bee W4**

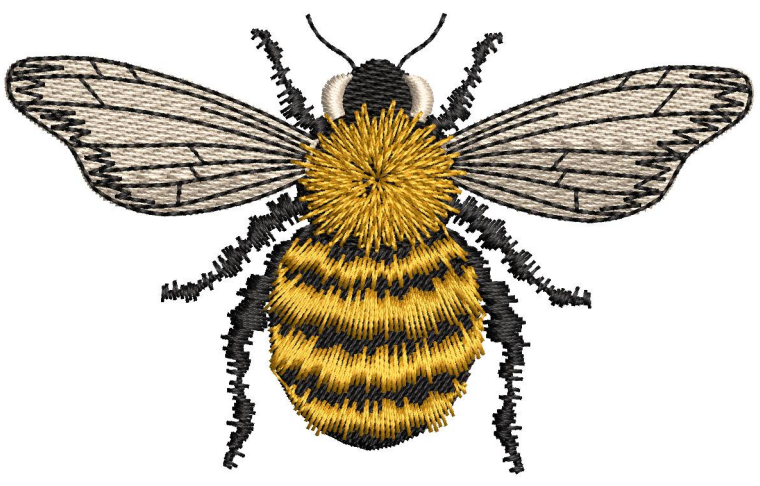
Title:

Stitches: 7,302
Height: 2.38 in
Width: 3.89 in
Colors: 3
Colorway: Madeira
Zoom: 1:1

ArtlySew

Stop Sequence:

#	Color	St.	Code	Name	Chart
1.	■	2,081	1800	Emerald Black	Madeira PolyNeon 40
2.	■	2,185	1682	Tusk	Madeira PolyNeon 40
3.	■	2,217	1800	Emerald Black	Madeira PolyNeon 40
4.	■	817	1772	Military Gold	Madeira PolyNeon 40



Color Film

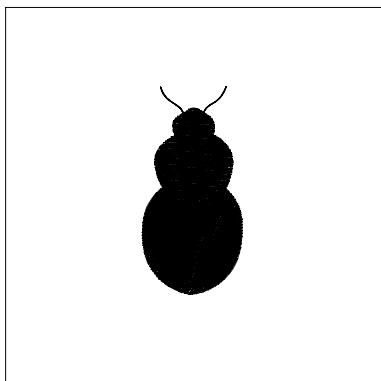
Wilcom EmbroideryStudio - Designing

Design: **0177-Bee W4**

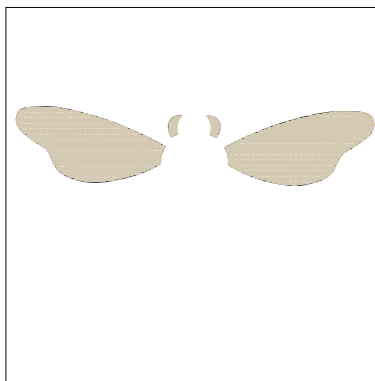
Title:

Stitches: 7,302
Height: 2.38 in
Width: 3.89 in
Colors: 3
Colorway: Madeira
Zoom: 0.48

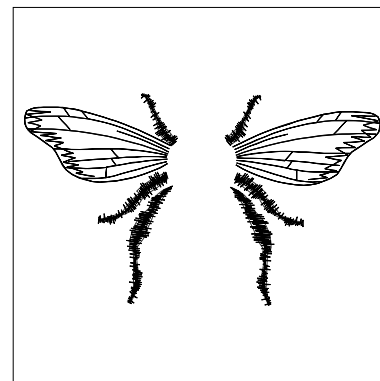
ArtlySew



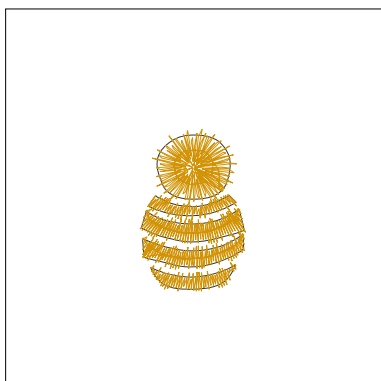
Stop #: 1
Element:
Code: 1800
Name: Emerald Black
Chart: Madeira PolyNeon 20
Stitches: 2,081
Thread used: 41.95ft



Stop #: 2
Element:
Code: 1682
Name: Tusk
Chart: Madeira PolyNeon 40
Stitches: 2,185
Thread used: 44.71ft



Stop #: 3
Element:
Code: 1800
Name: Emerald Black
Chart: Madeira PolyNeon 40
Stitches: 2,217
Thread used: 31.83ft



Stop #: 4
Element:
Code: 1772
Name: Military Gold
Chart: Madeira PolyNeon 40
Stitches: 817
Thread used: 16.89ft

Production Worksheet

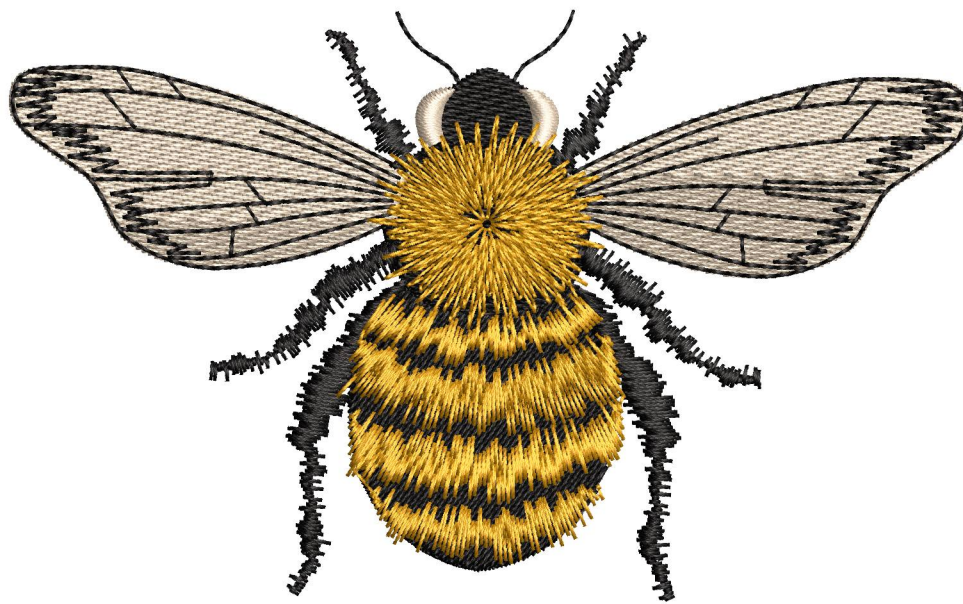
Wilcom EmbroideryStudio - Designing

Design: **0177-Bee W5**

Title:

Stitches: 10,730
Height: 3.06 in
Width: 5.00 in
Colors: 3
Colorway: Madeira
Zoom: 1:1

ArtlySew



Production Worksheet

Wilcom EmbroideryStudio - Designing



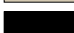

Design: **0177-Bee W5**

Title:

Stitches: 10,730
Height: 3.06 in
Width: 5.00 in
Colors: 3
Colorway: Madeira
Zoom: 1:1

ArtlySew

Stop Sequence:

#	Color	St.	Code	Name	Chart
1.		3,202	1800	Emerald Black	Madeira PolyNeon 40
2.		3,343	1682	Tusk	Madeira PolyNeon 40
3.		2,888	1800	Emerald Black	Madeira PolyNeon 40
4.		1,295	1772	Military Gold	Madeira PolyNeon 40

Color Film

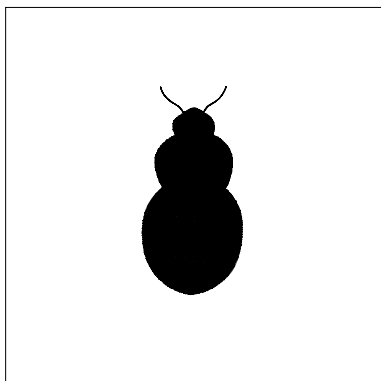
Wilcom EmbroideryStudio - Designing

Design: **0177-Bee W5**

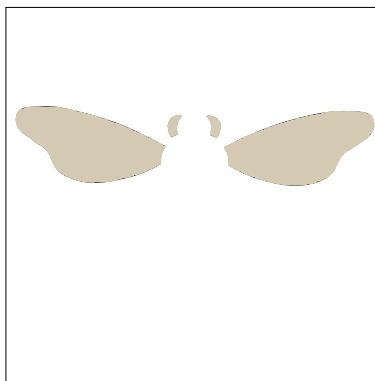
Title:

Stitches: 10,730
Height: 3.06 in
Width: 5.00 in
Colors: 3
Colorway: Madeira
Zoom: 0.37

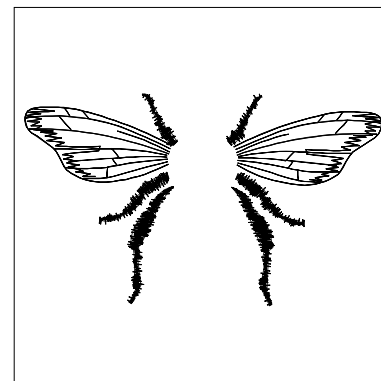
ArtlySew



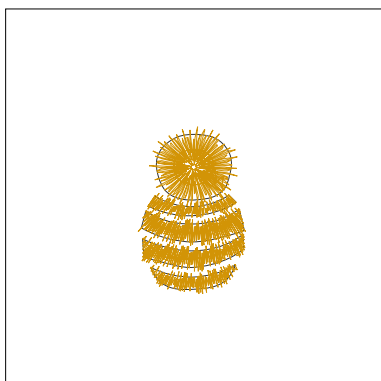
Stop #: 1
Element:
Code: 1800
Name: Emerald Black
Chart: Madeira PolyNeon 40
Stitches: 3,202
Thread used: 67.12ft



Stop #: 2
Element:
Code: 1682
Name: Tusk
Chart: Madeira PolyNeon 40
Stitches: 3,343
Thread used: 71.27ft



Stop #: 3
Element:
Code: 1800
Name: Emerald Black
Chart: Madeira PolyNeon 40
Stitches: 2,888
Thread used: 43.94ft



Stop #: 4
Element:
Code: 1772
Name: Military Gold
Chart: Madeira PolyNeon 40
Stitches: 1,295
Thread used: 28.63ft

Production Worksheet

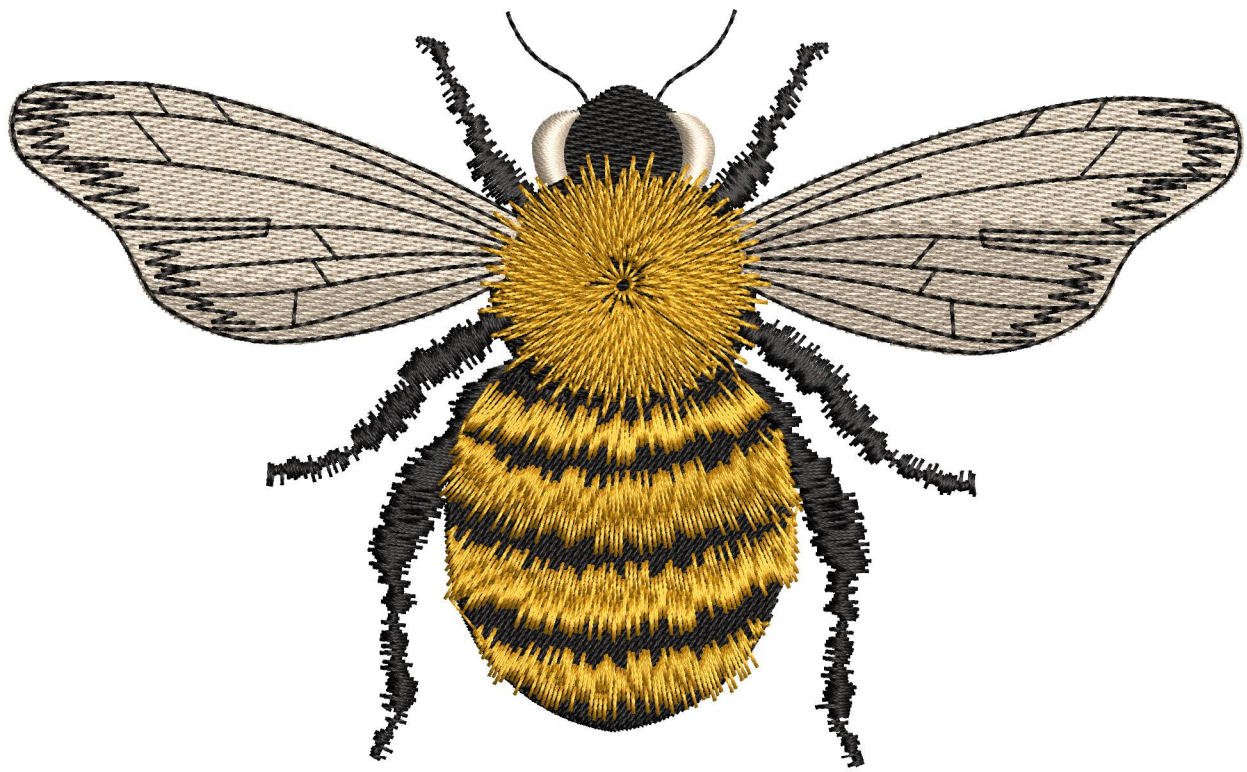
Wilcom EmbroideryStudio - Designing

Design: **0177-Bee W6p5**

Title:

Stitches: 15,932
Height: 3.94 in
Width: 6.43 in
Colors: 3
Colorway: Madeira
Zoom: 1:1

ArtlySew



Production Worksheet

Wilcom EmbroideryStudio - Designing

Design: **0177-Bee W6p5**

Title:

Stitches: 15,932
Height: 3.94 in
Width: 6.43 in
Colors: 3
Colorway: Madeira
Zoom: 1:1

ArtlySew

Stop Sequence:

#	Color	St.	Code	Name	Chart
1.		4,973	1800	Emerald Black	Madeira PolyNeon 40
2.		5,215	1682	Tusk	Madeira PolyNeon 40
3.		3,762	1800	Emerald Black	Madeira PolyNeon 40
4.		1,980	1772	Military Gold	Madeira PolyNeon 40

Color Film

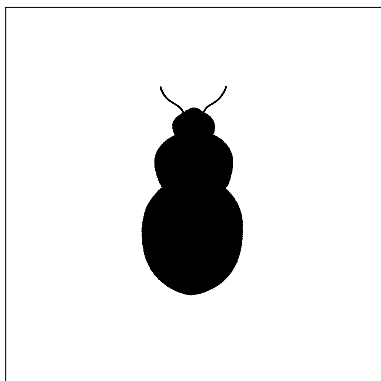
Wilcom EmbroideryStudio - Designing

Design: **0177-Bee W6p5**

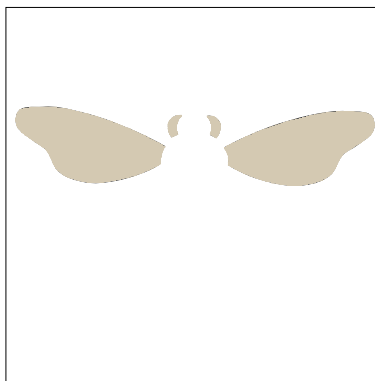
Title:

Stitches: 15,932
Height: 3.94 in
Width: 6.43 in
Colors: 3
Colorway: Madeira
Zoom: 0.29

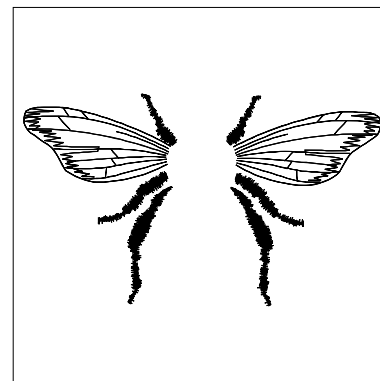
ArtlySew



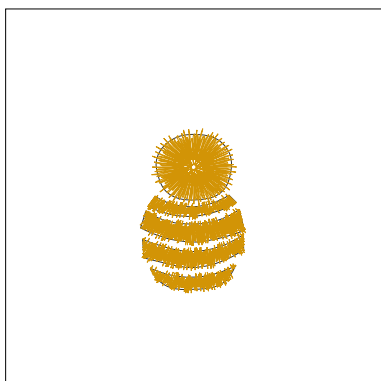
Stop #: 1
Element:
Code: 1800
Name: Emerald Black
Chart: Madeira PolyNeon 20
Stitches: 4,973
Thread used: 107.38ft



Stop #: 2
Element:
Code: 1682
Name: Tusk
Chart: Madeira PolyNeon 40
Stitches: 5,215
Thread used: 114.65ft



Stop #: 3
Element:
Code: 1800
Name: Emerald Black
Chart: Madeira PolyNeon 40
Stitches: 3,762
Thread used: 61.40ft



Stop #: 4
Element:
Code: 1772
Name: Military Gold
Chart: Madeira PolyNeon 40
Stitches: 1,980
Thread used: 45.40ft