



# **Creative Fabrica**

**Embroidery Design  
Sewing Information**

**[www.creativefabrica.com/embroidery/](http://www.creativefabrica.com/embroidery/)**

© Creative Fabrica

# Production Worksheet

Wilcom EmbroideryStudio - Designing


Design: **0092-Bee-H3**

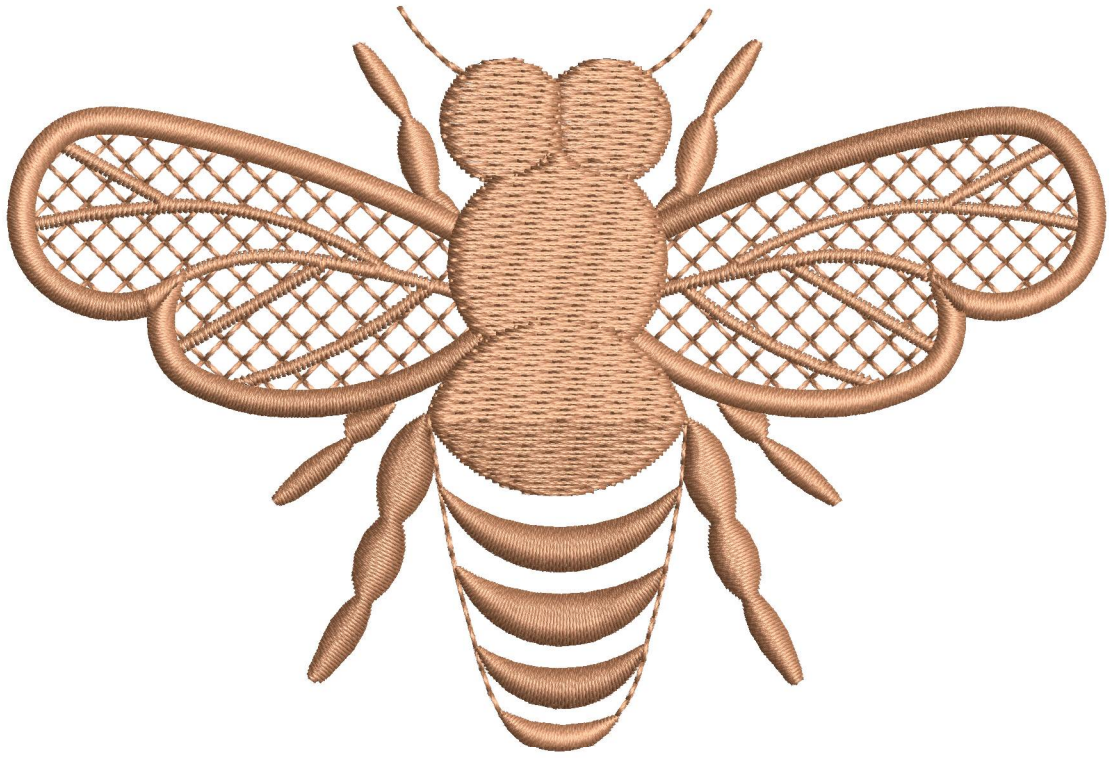
Title:

Stitches: 8 230  
Height: 3.01 in  
Width: 4.43 in  
Colors: 1  
Colorway: Colorway 1  
Zoom: 1.29

**ArtlySew**

Stop Sequence:

#	Color	St.	Code	Name	Chart
1.		8 228	44	Red Brown	Wilcom



# Color Film

Wilcom EmbroideryStudio - Designing

Design: **0092-Bee-H3**

Title:

Stitches: 8 230

Height: 3.01 in

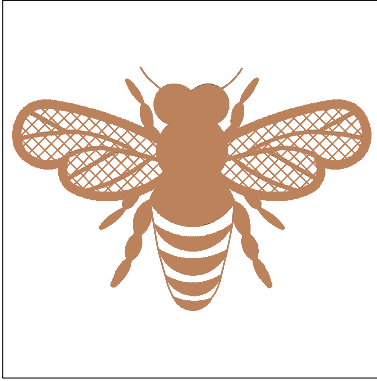
Width: 4.43 in

Colors: 1

Colorway: Colorway 1

Zoom: 0.42

**ArtlySew**



Stop #: 1

Element:

Code: 44

Name: Red Brown

Chart: Wilcom

Stitches: 8 228

Thread used: 149.45ft