

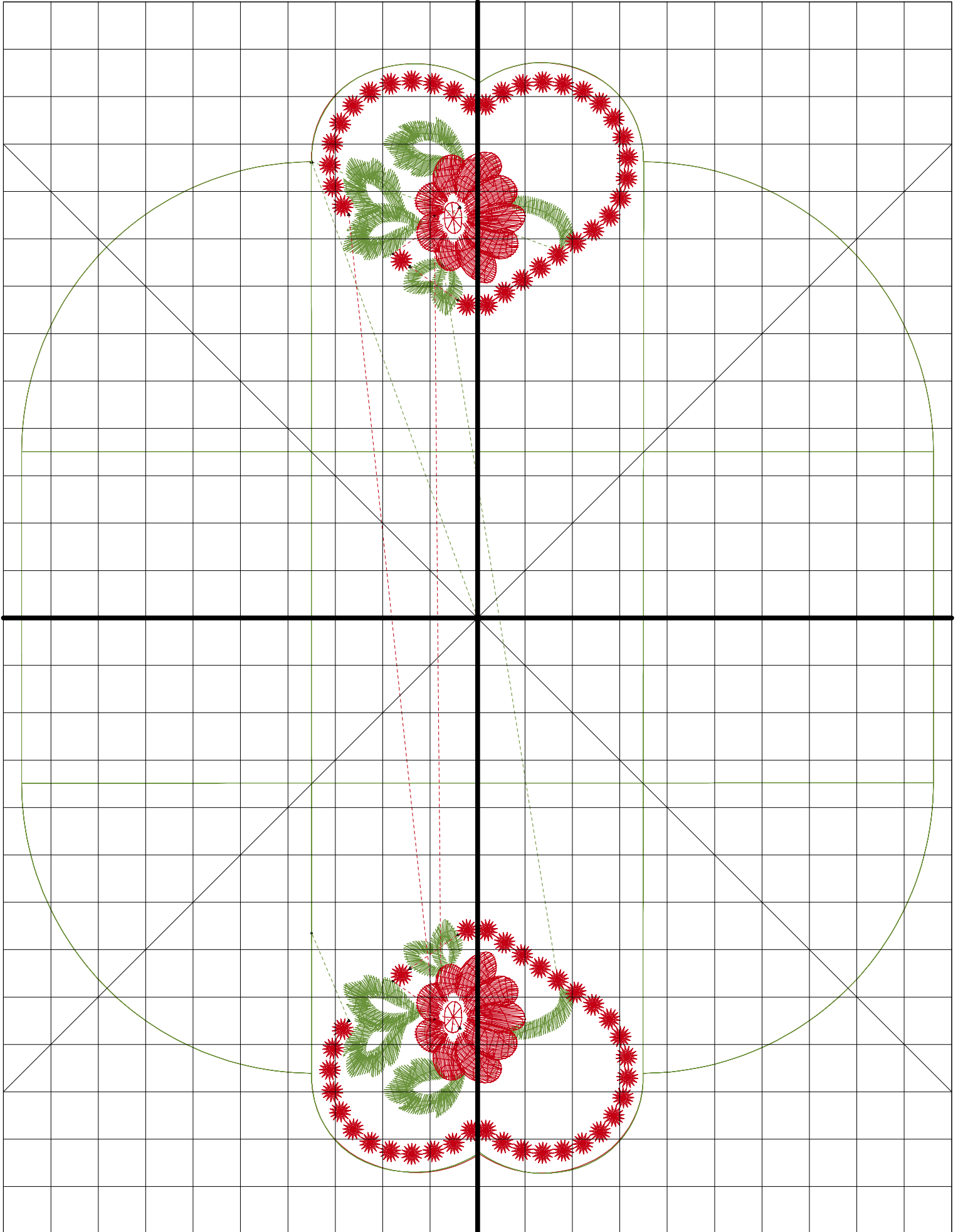


# **Creative Fabrica**

**Embroidery Design  
Sewing Information**

**[www.creativefabrica.com/embroidery/](http://www.creativefabrica.com/embroidery/)**

© Creative Fabrica



Name:Heart Basket.ART90

Height: 234.4 mm  
 Width: 192.3 mm  
 Stitches: 11,816  
 Colors: 2  
 Color changes: 4  
 Trims: 10

Maximum Stitch Length 12.7mm  
 Minimum Stitch Length 0.3mm  
 Maximum Jump Length 7mm

Hoop: 200 x 260  
 Total bobbin: 22.04m

Color Sequence:

#	Color	Element	Code	Name	Chart
1.	2		1251	Dusty Green	Hemingworth PolySelect
2.	1		1270	Christmas Red	Hemingworth PolySelect
3.	2		1251	Dusty Green	Hemingworth PolySelect
4.	1		1270	Christmas Red	Hemingworth PolySelect
5.	2		1251	Dusty Green	Hemingworth PolySelect

Thread usage: 60.82m

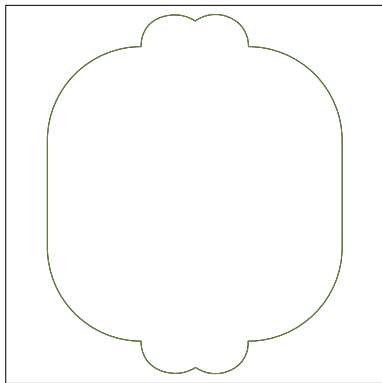
N#	Color	Name	Length
2.	1251	Dusty Green	26.60m
1.	1270	Christmas Red	34.22m

Cord usage: 0.00m

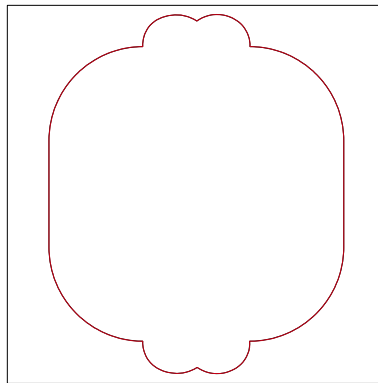
CS#	Color	Diameter	Length
-----	-------	----------	--------

Machine runtime:

Module	Runtime (hr:min:sec)
Default	0:29:17



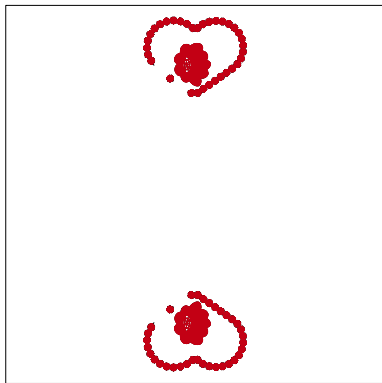
Stop #: 1  
Element:  
Code: 1251  
Name: Dusty Green  
Chart: Hemingworth PolySelect  
Stitches: 387  
Thread used: 1.76m  
Placement Line



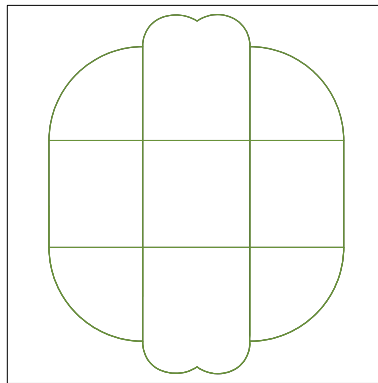
Stop #: 2  
Element:  
Code: 1270  
Name: Christmas Red  
Chart: Hemingworth PolySelect  
Stitches: 374  
Thread used: 1.72m  
Tackdown line



Stop #: 3  
Element:  
Code: 1251  
Name: Dusty Green  
Chart: Hemingworth PolySelect  
Stitches: 3,752  
Thread used: 16.64m



Stop #: 4  
Element:  
Code: 1270  
Name: Christmas Red  
Chart: Hemingworth PolySelect  
Stitches: 5,543  
Thread used: 32.50m



Stop #: 5  
Element:  
Code: 1251  
Name: Dusty Green  
Chart: Hemingworth PolySelect  
Stitches: 1,760  
Thread used: 8.20m

## How to stitch Out.

The images shown below are of the Easter basket, but the Heart Basket is made in exactly the same way.

You will need 2 sheets of craft felt. I just used the felt you can buy in small sheets. Just make sure it is large enough to stitch the design with a bit to spare. My sheets were 23cm x 30cm.

You will also need 2 pieces of ribbon or flat cord, about 1 cm wide and 35 cm long.

1. Hoop up some tearaway and stitch the placement line. Lay a sheet of felt on top covering the placement line. Pin or tape in place.
2. Stitch all the colors except the last one.



3. Remove your hoop and turn it over. Position a ribbon at each end as shown. I glued the ends of the ribbon in place and then taped the loose ends to keep them vertical.



4. Lay your second piece of felt over the design and pin or tape in place.
5. Put your hoop back in the machine making sure the ribbons are not caught up.
6. Stitch the last color.
7. Remove the design from the hoop and remove the excess tearaway.
8. Cut out around the basket about 3 mm away from the stitching. You will have to cut through the layers singly where the ribbons are, to avoid cutting through the ribbons.
9. With wrong sides together, (embroidery on the outside) fold the corners, matching the crossbars. Top stitch over the cross bars

