

Creative Fabrica

**Embroidery Design
Sewing Information**

www.creativefabrica.com/embroidery/

© Creative Fabrica

Production Worksheet

Wilcom EmbroideryStudio – Level 3 Advanced

Design: Gnome Embroidery

Colorway: Colorway 1

Stitches: 31947

Colors: 7

Height: 164.2 mm

Width: 158.7 mm

Zoom: 0.84

Machine: Tajima
Color changes: 7
Stops: 8
Trims: 14
Fabric: Pure Cotton
Required Stabilizer: Topping:
Backing: Tear Away x 2
Left: 79.3 mm
Right: 79.3 mm
Up: 82.1 mm
Down: 82.1 mm
EndX: 0.0 mm
EndY: 0.0 mm
Max Stitch: 7.0 mm
Min Stitch: 0.2 mm
Max Jump: 7.5 mm
Total Bobbin: 77.14m

Stop Sequence:

#	N#	St.	Description	Code	Brand
1.	1	■	592 Black	13	Wilcom
2.	18	■	2255 Navy Blue	18	Wilcom
3.	2	■	3836 Cyan	2	Wilcom
4.	8	■	6979 Purple	8	Wilcom
5.	37	■	1065 Khaki	37	Wilcom
6.	23	■	7252 Light BlueGreen	23	Wilcom
7.	10	■	2490 Pink	10	Wilcom
8.	1	■	7476 Black	13	Wilcom



Color Film

Wilcom EmbroideryStudio – Level 3 Advanced

Design: Gnome Embroidery

Colorway: Colorway 1

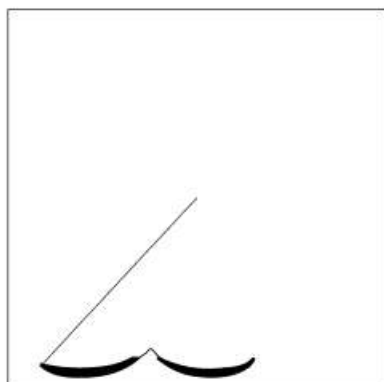
Stitches: 31947

Colors: 7

Height: 164.2 mm

Width: 158.7 mm

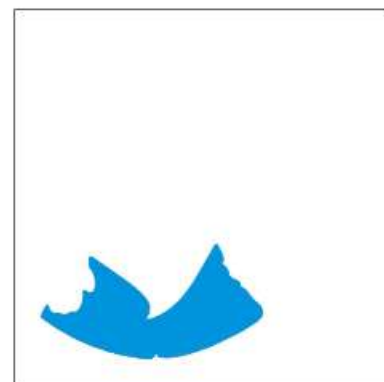
Zoom: 0.29



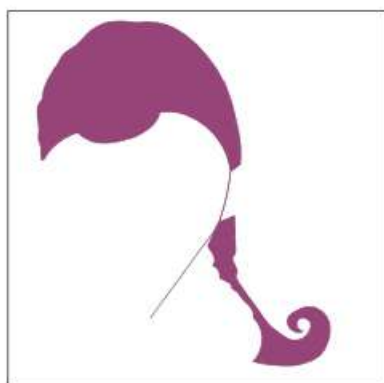
#: 1
Color: Black
Code: 13
Brand: Wilcom
Stitches: 592
Thread Used: 3.77m



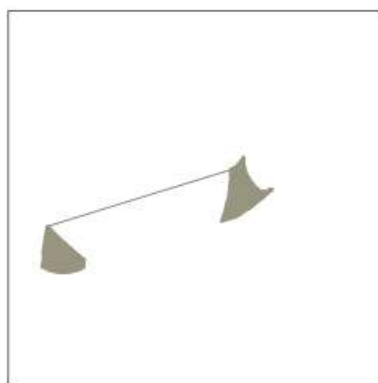
#: 2
Color: Navy Blue
Code: 18
Brand: Wilcom
Stitches: 2255
Thread Used: 13.98m



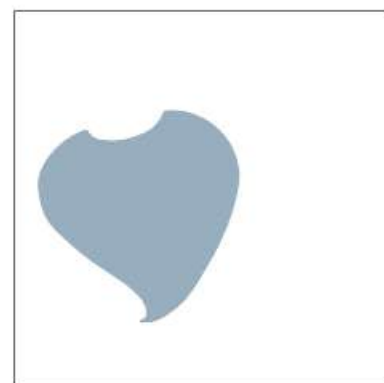
#: 3
Color: Cyan
Code: 2
Brand: Wilcom
Stitches: 3836
Thread Used: 24.71m



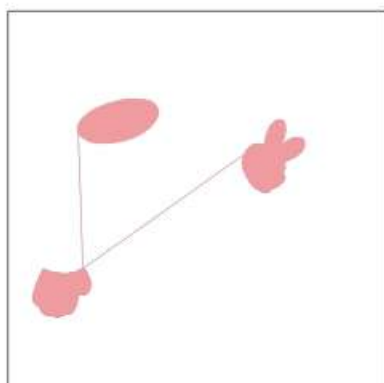
#: 4
Color: Purple
Code: 8
Brand: Wilcom
Stitches: 6979
Thread Used: 45.22m



#: 5
Color: Khaki
Code: 37
Brand: Wilcom
Stitches: 1065
Thread Used: 6.14m



#: 6
Color: Light BlueGreen
Code: 23
Brand: Wilcom
Stitches: 7252
Thread Used: 50.56m



#: 7
Color: Pink
Code: 10
Brand: Wilcom
Stitches: 2490
Thread Used: 15.02m



#: 8
Color: Black
Code: 13
Brand: Wilcom
Stitches: 7476
Thread Used: 34.66m

- 1 ■ Black
- 2 ■ Dusty Navy
- 3 ■ Baltic Blue
- 4 ■ Medium Purple
- 5 ■ Pale/Grey
- 6 ■ Lt. Smokey Blue
- 7 ■ Medium Pink
- 8 ■ Black



- 1 ■ Black
- 2 ■ Dusty Navy
- 3 ■ Baltic Blue
- 4 ■ Medium Purple
- 5 ■ Pale/Grey
- 6 ■ Lt. Smokey Blue
- 7 ■ Medium Pink
- 8 ■ Black



- 1 ■ Black
- 2 ■ Dusty Navy
- 3 ■ Baltic Blue
- 4 ■ Medium Purple
- 5 ■ Pale/Grey
- 6 ■ Lt. Smokey Blue
- 7 ■ Medium Pink
- 8 ■ Black



Nom: Gnome Embroidery 4x4
Fichier: Gnome Embroidery 4x4.PES
Points: 15259 **Couleurs: 7/8**
Taille: 95.4x98.8 mm **Stop: 7**

Nom: Gnome Embroidery 5x7
Fichier: Gnome Embroidery 5x7.PES
Points: 23230 **Couleurs: 7/8**
Taille: 128.6x133.2 mm **Stop: 7**

Nom: Gnome Embroidery 6x10
Fichier: Gnome Embroidery 6x10.PES
Points: 31919 **Couleurs: 7/8**
Taille: 158.6x164.2 mm **Stop: 7**

Cette documentation a été réalisée avec une version non-enregistrée de Embird 2017 Software.
 Pour plus d'informations au sujet Embird 2017 Veuillez visiter notre site web <http://www.embird.net>.