



Creative Fabrica

**Embroidery Design
Sewing Information**

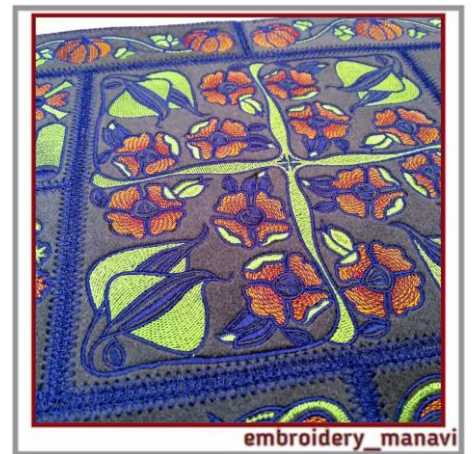
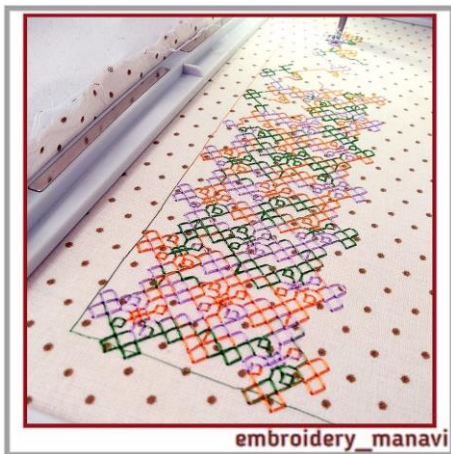
www.creativefabrica.com/embroidery/

© Creative Fabrica

Blackwork Machine embroidery design. 4 and 5 sizes, 2 pattern.



More designs in my stores.



Needle Thread consumption

1 ■ 312 100.0% (51.9 m)
Upper thread 51.9 m
Bobbin 17.3 m
Catalog: DMC

File: NV130719.dst (Tajima)

Design name: NV130719dst

Stitches: 10608

Size: 70.0 x 245.0 mm (2.76 x 9.65 ")

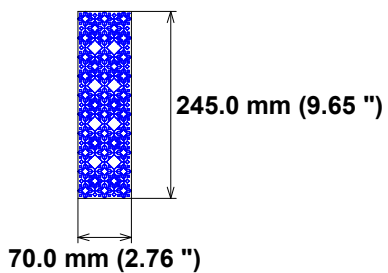
Begin: 35.0, 122.5 mm

End: 35.0, 122.5 mm

Start needle: 1

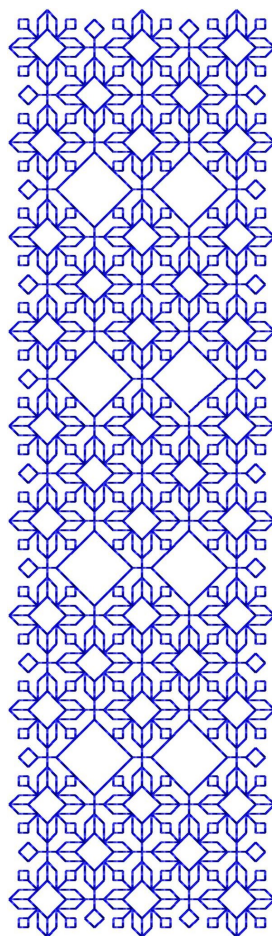
Colors: 1/1 , Stops: 0

Date: 11.07.2022



Histogram

(10608) End



Needle Thread consumption

1 ■ 312 100.0% (20.3 m)
Upper thread 20.3 m
Bobbin 6.8 m
Catalog: DMC

File: NV130719a.dst (Tajima)

Design name: NV130719adst

Stitches: 4164

Size: 95.0 x 70.0 mm (3.74 x 2.76 ")

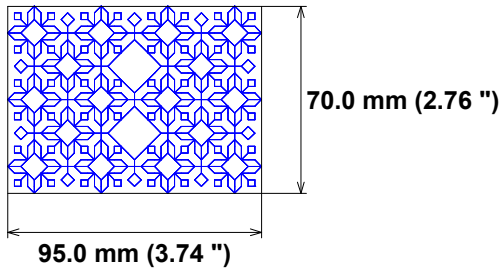
Begin: 47.5, 35.0 mm

End: 47.5, 35.0 mm

Start needle: 1

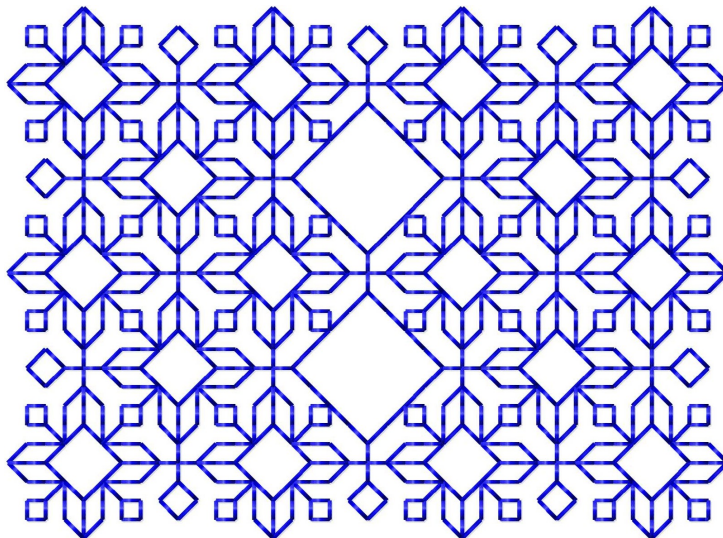
Colors: 1/1 , Stops: 0

Date: 11.07.2022



Histogram

(4164) End



Needle Thread consumption

1 ■ 312 100.0% (30.7 m)
Upper thread 30.7 m
Bobbin 10.2 m
Catalog: DMC

File: NV130719b.dst (Tajima)

Design name: NV130719bdst

Stitches: 6306

Size: 145.0 x 70.0 mm (5.71 x 2.76 ")

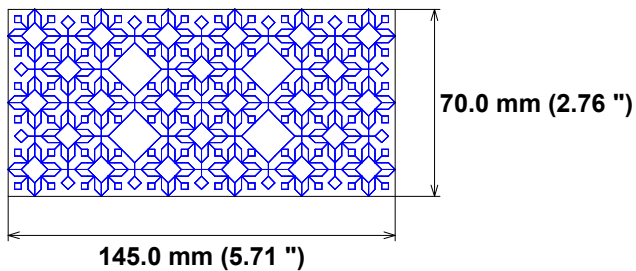
Begin: 72.5, 35.0 mm

End: 72.5, 35.0 mm

Start needle: 1

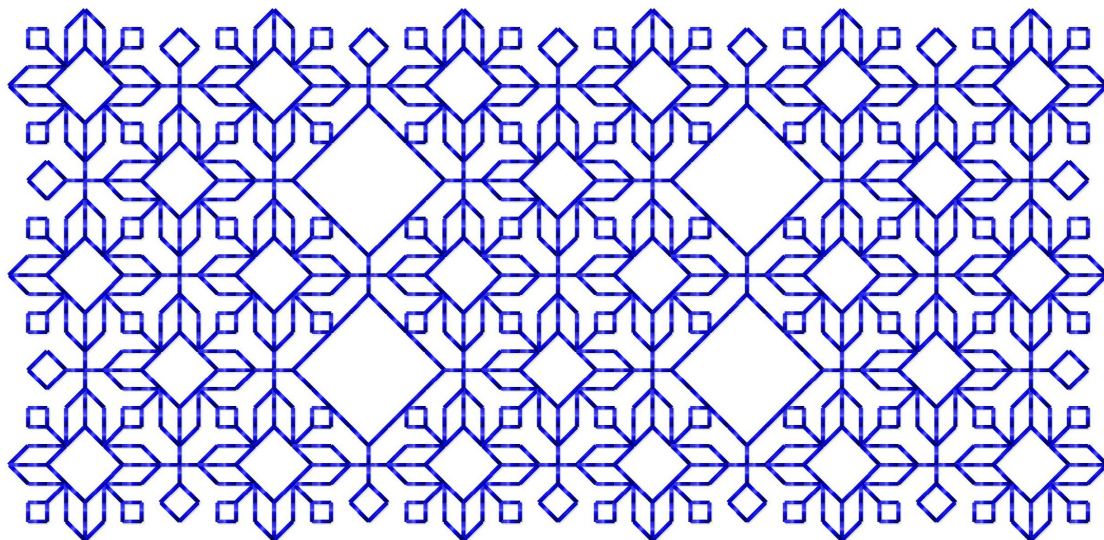
Colors: 1/1 , Stops: 0

Date: 11.07.2022



Histogram

(6306) End



Needle Thread consumption

1 ■ 312 100.0% (41.2 m)
Upper thread 41.2 m
Bobbin 13.7 m
Catalog: DMC

File: NV130719c.dst (Tajima)

Design name: NV130719bdst

Stitches: 8454

Size: 195.0 x 70.0 mm (7.68 x 2.76 ")

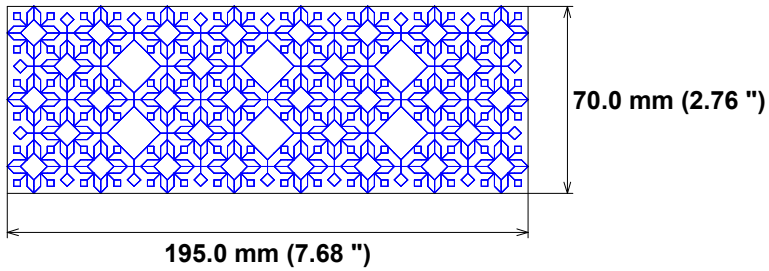
Begin: 97.5, 35.0 mm

End: 97.5, 35.0 mm

Start needle: 1

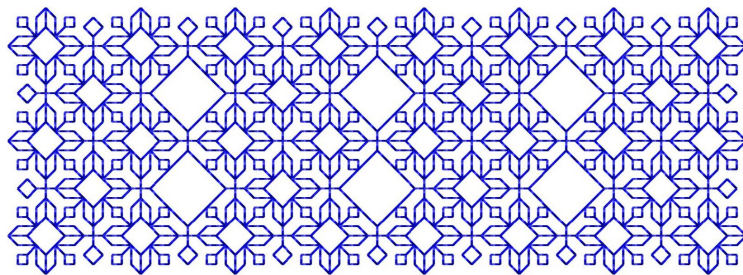
Colors: 1/1 , Stops: 0

Date: 11.07.2022



Histogram

(8454) End



Needle Thread consumption

1 ■ 312 100.0% (9.0 m)

Upper thread 9.0 m
Bobbin 3.0 m
Catalog: DMC

File: NV140719_1.dst (Tajima)

Design name: NV140719_1dst

Stitches: 1748

Size: 110.0 x 35.0 mm (4.33 x 1.38 ")

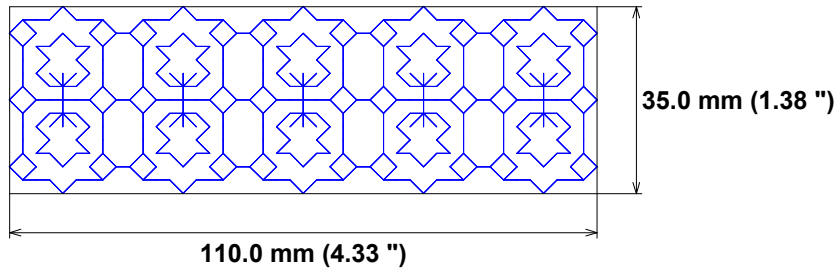
Begin: 55.0, 17.5 mm

End: 55.0, 17.5 mm

Start needle: 1

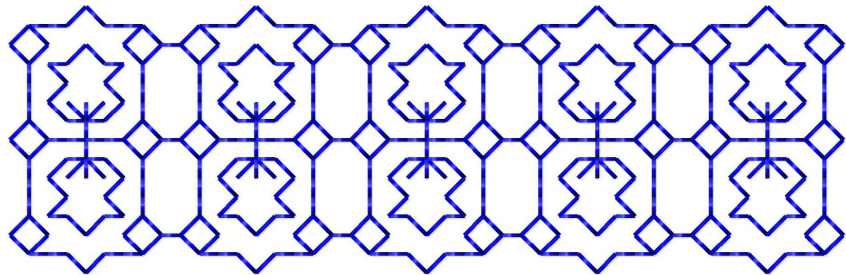
Colors: 1/1 , Stops: 0

Date: 11.07.2022



Histogram

(1748) End



Needle Thread consumption

1 ■ 312 100.0% (12.7 m)
Upper thread 12.7 m
Bobbin 4.2 m
Catalog: DMC

File: NV140719_2.dst (Tajima)

Design name: NV140719_2dst

Stitches: 2448

Size: 35.0 x 155.0 mm (1.38 x 6.10 ")

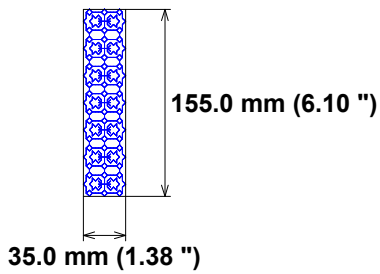
Begin: 17.5, 77.5 mm

End: 17.5, 77.5 mm

Start needle: 1

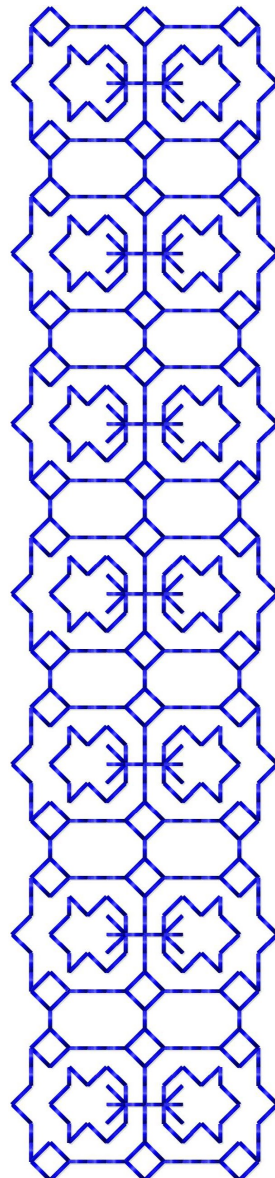
Colors: 1/1 , Stops: 0

Date: 11.07.2022



Histogram

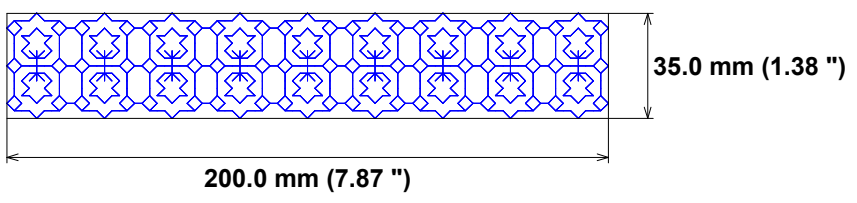
(2448) End



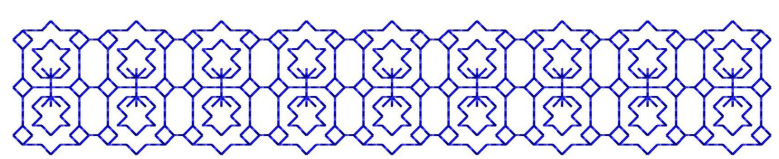
Needle Thread consumption

1 ■ 312 100.0% (16.4 m)
Upper thread 16.4 m
Bobbin 5.5 m
Catalog: DMC

File: NV140719_3.dst (Tajima)
Design name: NV140719_3dst
Stitches: 3148
Size: 200.0 x 35.0 mm (7.87 x 1.38 ")
Begin: 100.0, 17.5 mm
End: 100.0, 17.5 mm
Start needle: 1
Colors: 1/1 , Stops: 0
Date: 11.07.2022



Histogram
(3148) End



Needle Thread consumption File: NV140719_4.dst (Tajima)

1 ■ 312 100.0% (20.0 m)

Upper thread 20.0 m
Bobbin 6.7 m
Catalog: DMC

Design name: NV140719_4dst

Stitches: 3848

Size: 35.0 x 245.0 mm (1.38 x 9.65 ")

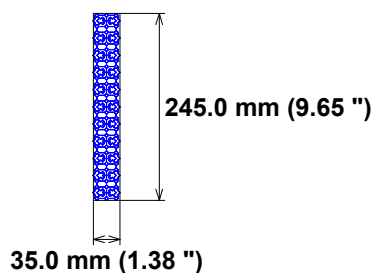
Begin: 17.5, 122.5 mm

End: 17.5, 122.5 mm

Start needle: 1

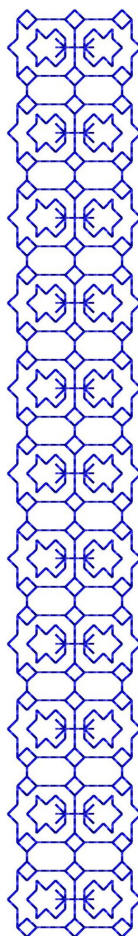
Colors: 1/1 , Stops: 0

Date: 11.07.2022

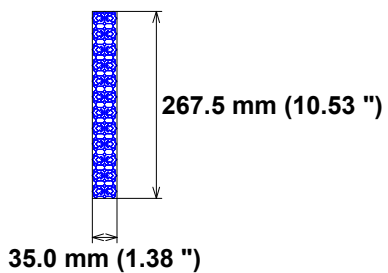


Histogram

(3848) End



Needle Thread consumption **File: NV140719_5.dst (Tajima)**
1 ■ 312 100.0% (21.9 m) **Design name: NV140719_5dst**
Upper thread 21.9 m **Stitches: 4196**
Bobbin 7.3 m **Size: 35.0 x 267.5 mm (1.38 x 10.53 ")**
Catalog: DMC **Begin: 17.5, 133.8 mm**
End: 17.5, 133.8 mm
Start needle: 1
Colors: 1/1 , Stops: 0
Date: 11.07.2022



Histogram

(4196) End

