

Creative Fabrica

**Embroidery Design
Sewing Information**

www.creativefabrica.com/embroidery/

© Creative Fabrica

Approval Sheet

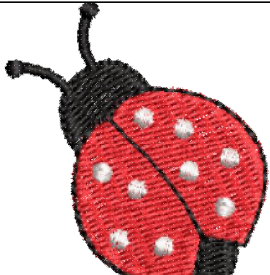
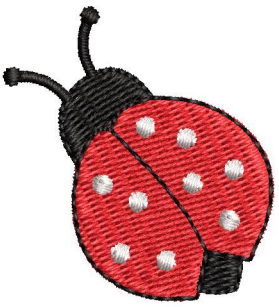
Wilcom EmbroideryStudio - Designing

LADYBUG

Design: **Ladybug**

Title: **springowl_cq1**

Height: 38.7 mm
Width: 35.7 mm
Colors: 3
Colorway: Colorway 1
Zoom: 1:1



Product type:
Product:
Total qty:
Product colors:
Position:

Terms and Conditions:

Approved By:

Date:

Color Film

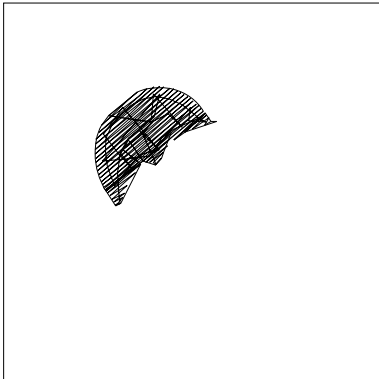
Wilcom EmbroideryStudio - Designing

LADYBUG

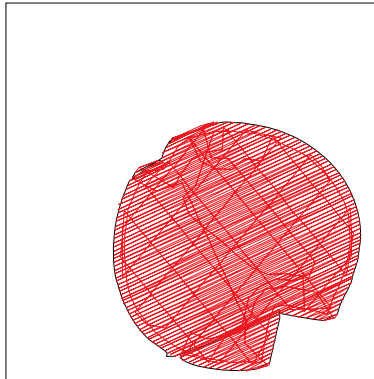
Design: **Ladybug**

Title: **springowl_cq1**

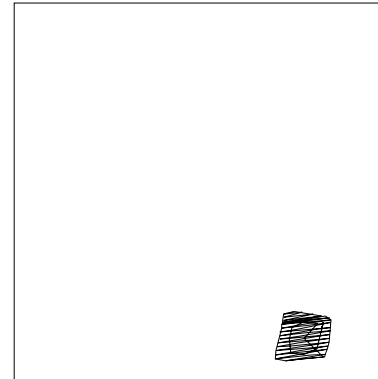
Stitches: 2,031
Height: 38.7 mm
Width: 35.7 mm
Colors: 3
Colorway: Colorway 1
Zoom: 1.23



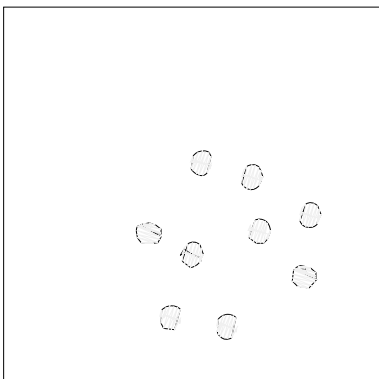
Stop #: 1
Element:
Code: 14
Name: Black
Chart: Default
Stitches: 219
Thread used: 1.20m



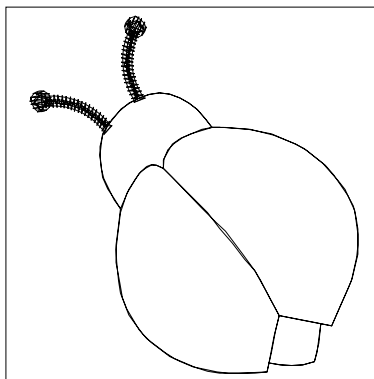
Stop #: 2
Element:
Code:
Name: Thread #11
Chart:
Stitches: 1,095
Thread used: 6.91m



Stop #: 3
Element:
Code: 14
Name: Black
Chart: Default
Stitches: 71
Thread used: 0.39m



Stop #: 4
Element:
Code:
Name: Thread #13
Chart:
Stitches: 252
Thread used: 1.05m



Stop #: 5
Element:
Code: 14
Name: Black
Chart: Default
Stitches: 394
Thread used: 1.58m

Production Summary

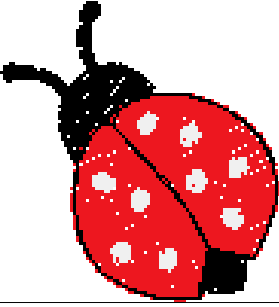
Wilcom EmbroideryStudio - Designing

LADYBUG

Design: **Ladybug**

Title: **springowl_cq1**

Stitches: 2,031
 Height: 38.7 mm
 Width: 35.7 mm
 Colors: 3



Machine format: Melco
 Color changes: 4
 Stops: 5
 Trims: 4
 Hoop: <None>
 Max stitch: 10.8 mm
 Min stitch: 0.1 mm
 Max jump: 11.9 mm

Left: 21.0 mm
 Right: 14.7 mm
 Up: 23.7 mm
 Down: 15.0 mm
 EndX: 0.0 mm
 EndY: 0.0 mm
 Area: 1381.6 mm²
 Total thread: 11.64m
 Total bobbin: 4.19m

Colorway			Colorway 1
Background			
Product			
Stop	Color	Stitches	
1	34	219	14 Black Default
2	31	1,095	Thread #11
3	34	71	14 Black Default
4	33	252	Thread #13
5	34	394	14 Black Default