



Creative Fabrica

**Embroidery Design
Sewing Information**

www.creativefabrica.com/embroidery/

© Creative Fabrica

Production Summary

Wilcom EmbroideryStudio - Designing

550

Design: **550**

Title:

Stitches: 7,803
 Height: 2.80 in
 Width: 2.56 in
 Colors: 4



Machine format: Tajima
 Color changes: 3
 Stops: 4
 Trims: 32
 Hoop: <None>
 Max stitch: 8.7 mm
 Min stitch: 0.2 mm
 Max jump: 5.9 mm

Left: 32.5 mm
 Right: 32.6 mm
 Up: 35.6 mm
 Down: 35.6 mm
 EndX: 0.00 in
 EndY: 0.00 in
 Area: 7.18 in²
 Total thread: 132.98ft
 Total bobbin: 47.68ft

| Colorway | | Colorway 1 | |
|------------|-------|--------------|------------------------------------|
| Background | | | |
| Product | | Blanks\Blank | |
| Stop | Color | Stitches | |
| 1 | 2 | 1,042 | R120 G153 B22 |
| 2 | 3 | 3,616 | 0170 Sea Shell Isacord 40 |
| 3 | 4 | 2,535 | 4220 Island Green Isacord 40 |
| 4 | 1 | 608 | 0702 Papaya Isacord 40 |

Production Summary

Wilcom EmbroideryStudio - Designing

550

Design: **550**

Title:

Stitches: 9,312
 Height: 3.40 in
 Width: 3.11 in
 Colors: 4



Machine format: Tajima
 Color changes: 3
 Stops: 4
 Trims: 33
 Hoop: <None>
 Max stitch: 10.4 mm
 Min stitch: 0.3 mm
 Max jump: 6.9 mm

Left: 39.5 mm
 Right: 39.5 mm
 Up: 43.2 mm
 Down: 43.2 mm
 EndX: 0.00 in
 EndY: 0.00 in
 Area: 10.58 in²
 Total thread: 175.24ft
 Total bobbin: 66.86ft

| Colorway | | | Colorway 1 |
|------------|-------|----------|------------------------------------|
| Background | | | |
| Product | | | Blanks\Blank |
| Stop | Color | Stitches | |
| 1 | 2 | 1,230 | R120 G153 B22 |
| 2 | 3 | 4,330 | 0170 Sea Shell Isacord 40 |
| 3 | 4 | 3,015 | 4220 Island Green Isacord 40 |
| 4 | 1 | 735 | 0702 Papaya Isacord 40 |

Production Summary

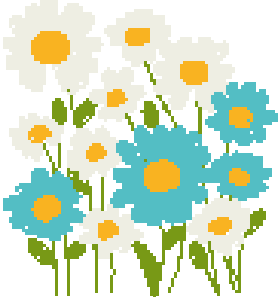
Wilcom EmbroideryStudio - Designing

550

Design: **550**

Title:

Stitches: 10,330
 Height: 3.80 in
 Width: 3.48 in
 Colors: 4



Machine format: Tajima
 Color changes: 3
 Stops: 4
 Trims: 33
 Hoop: <None>
 Max stitch: 11.6 mm
 Min stitch: 0.3 mm
 Max jump: 6.8 mm

Left: 44.2 mm
 Right: 44.2 mm
 Up: 48.3 mm
 Down: 48.3 mm
 EndX: 0.00 in
 EndY: 0.00 in
 Area: 13.22 in²
 Total thread: 206.59ft
 Total bobbin: 81.48ft

| Colorway | | Colorway 1 | |
|------------|-------|--------------|------------------------------------|
| Background | | | |
| Product | | Blanks\Blank | |
| Stop | Color | Stitches | |
| 1 | 2 | 1,353 | R120 G153 B22 |
| 2 | 3 | 4,757 | 0170 Sea Shell Isacord 40 |
| 3 | 4 | 3,357 | 4220 Island Green Isacord 40 |
| 4 | 1 | 861 | 0702 Papaya Isacord 40 |

Production Summary

Wilcom EmbroideryStudio - Designing

550

Design: **550**

Title:

Stitches: 12,065
 Height: 4.40 in
 Width: 4.03 in
 Colors: 4



Machine format: Tajima
 Color changes: 3
 Stops: 4
 Trims: 33
 Hoop: <None>
 Max stitch: 9.2 mm
 Min stitch: 0.3 mm
 Max jump: 6.9 mm

Left: 51.1 mm
 Right: 51.1 mm
 Up: 55.9 mm
 Down: 55.9 mm
 EndX: 0.00 in
 EndY: 0.00 in
 Area: 17.72 in²
 Total thread: 260.67ft
 Total bobbin: 106.78ft

| Colorway | | Colorway 1 | |
|------------|-------|--------------|------------------------------------|
| Background | | | |
| Product | | Blanks\Blank | |
| Stop | Color | Stitches | |
| 1 | 2 | 1,536 | R120 G153 B22 |
| 2 | 3 | 5,511 | 0170 Sea Shell Isacord 40 |
| 3 | 4 | 3,871 | 4220 Island Green Isacord 40 |
| 4 | 1 | 1,145 | 0702 Papaya Isacord 40 |

Production Summary

Wilcom EmbroideryStudio - Designing

550

Design: **550**

Title:

Stitches: 13,186
 Height: 4.80 in
 Width: 4.39 in
 Colors: 4



Machine format: Tajima
 Color changes: 3
 Stops: 4
 Trims: 33
 Hoop: <None>
 Max stitch: 10.0 mm
 Min stitch: 0.3 mm
 Max jump: 6.9 mm

Left: 55.8 mm
 Right: 55.8 mm
 Up: 61.0 mm
 Down: 61.0 mm
 EndX: 0.00 in
 EndY: 0.00 in
 Area: 21.08 in²
 Total thread: 298.21ft
 Total bobbin: 124.67ft

| Colorway | | Colorway 1 | |
|------------|-------|--------------|------------------------------------|
| Background | | | |
| Product | | Blanks\Blank | |
| Stop | Color | Stitches | |
| 1 | 2 | 1,662 | R120 G153 B22 |
| 2 | 3 | 5,992 | 0170 Sea Shell Isacord 40 |
| 3 | 4 | 4,253 | 4220 Island Green Isacord 40 |
| 4 | 1 | 1,277 | 0702 Papaya Isacord 40 |

Production Summary

Wilcom EmbroideryStudio - Designing

550

Design: **550**

Title:

Stitches: 14,984
 Height: 5.40 in
 Width: 4.94 in
 Colors: 4



Machine format: Tajima
 Color changes: 3
 Stops: 4
 Trims: 33
 Hoop: <None>
 Max stitch: 11.2 mm
 Min stitch: 0.3 mm
 Max jump: 6.8 mm

Left: 62.8 mm
 Right: 62.8 mm
 Up: 68.6 mm
 Down: 68.6 mm
 EndX: 0.00 in
 EndY: 0.00 in
 Area: 26.68 in²
 Total thread: 360.80ft
 Total bobbin: 154.77ft

| Colorway | | Colorway 1 | |
|------------|-------|--------------|------------------------------------|
| Background | | | |
| Product | | Blanks\Blank | |
| Stop | Color | Stitches | |
| 1 | 2 | 1,866 | R120 G153 B22 |
| 2 | 3 | 6,741 | 0170 Sea Shell Isacord 40 |
| 3 | 4 | 4,845 | 4220 Island Green Isacord 40 |
| 4 | 1 | 1,530 | 0702 Papaya Isacord 40 |