



Creative Fabrica

**Embroidery Design
Sewing Information**

www.creativefabrica.com/embroidery/

© Creative Fabrica



Email:
sheryl@sherscreativespace.com

Dinosaur Key Fob or Bag Tag

The design on your key fob most likely will be different from the one shown here in the step by step instructions, but all instructions are the same for all key fobs.

DESIGN SIZE & INFO

Stitches: 3034

Height: 3.03 in

Width: 3.23 in

Colors: 5

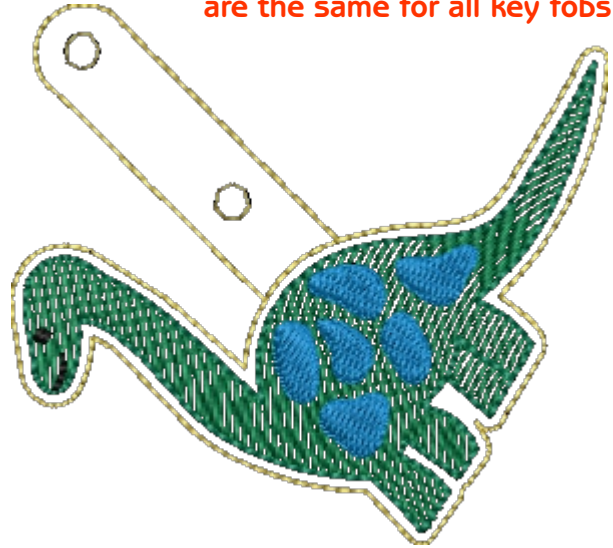
Stops: 5

Finished Project Size:

3 1/4 x 2 3/4 inches

(When snapped closed, and not including attachment.)

Handy dandy color and stitching steps chart is on the last page(s).



Supplies for one key fob:

4 x 6 inch piece of vinyl (or enough to cover your placement stitches, plus margins)

4 x 6 inch piece of vinyl, felt, or any other non-fraying fabric for backing (sized as above)

TEAR-AWAY stabilizer, a piece big enough for you to completely hoop (I use Pellon 806)

Embroidery thread, your choice of colors

Your finishing thread should match or compliment your background color, and backing fabric color.

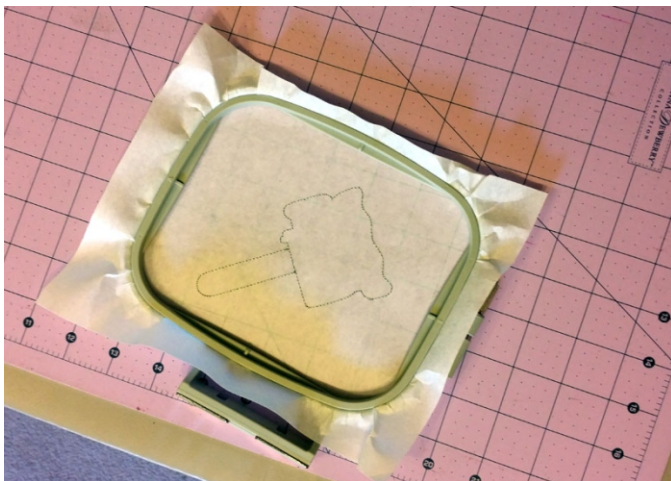
1 set of snaps, KAM Snaps were used in this project

1 (3/4 inch) swivel hook, or a key ring

Embroidery needle, size 11 (I use Organ 15X15T)

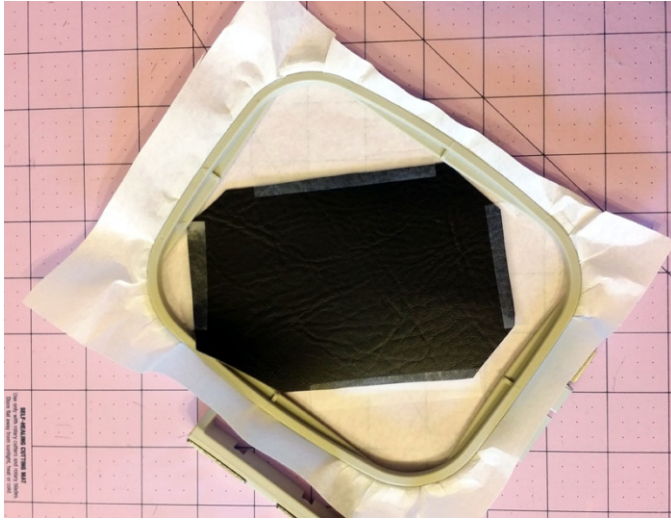
General supplies:

Scissors, pins or scotch tape, embroidery needles, embroidery machine

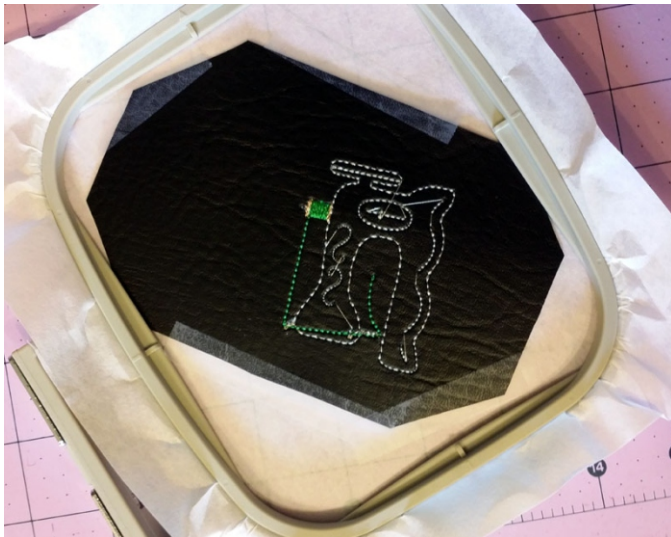


1. Load your file into your machine.

2. Hoop the stabilizer and snap onto the machine. Do not put the vinyl on yet. The first stitching will be your placement stitches. You will stitch this right on the stabilizer. It doesn't really matter what color you use, because you will never see it. This is just so you know where to place your vinyl.

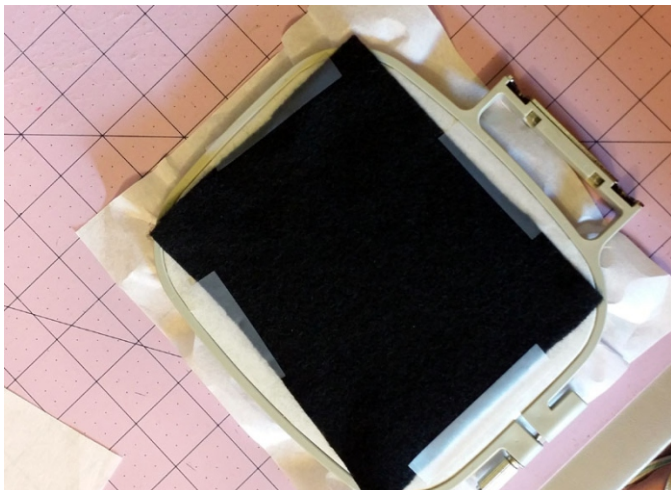


3. Remove hoop from machine and clip away jump stitches. Place your vinyl fabric on top of your placement stitches. Be sure that you leave at least a quarter inch away from stitching for your margin which you will cut away later. Secure your vinyl (right side should be facing up) to the stabilizer and hoop to keep it in place. You can use pins or scotch tape. I like to use the tape so I don't have to worry about the pins poking holes in my vinyl, or scratching my machine.



4. Stitch through the various color changes up until the last one. These are the details of your design. Before stitching the last color, remove the hoop from the machine.

NOTE: I only remove the jump stitches during stitching if they will interfere with another stitching, otherwise I save them until the end. It's easier for me to get a nice, close cut with the fabric out of the hoop.



5. Place your backing fabric (felt or vinyl) over the stitches you see on the underside of the hoop. Again, leave at least a quarter inch margin, and the right side (if you have a "right" side) should be facing up. Secure in place with tape.

Remember that at this point, your top thread and your bobbin thread will need to be a color that will either blend in, or compliment your main fabric and the backing.



6. Stitch your final stitching. Remove from the machine and the hoop. You will notice that you now have an outline stitch all the way around your design which includes your fob tab. Tear your stabilizer from between your fabrics and remove any leftover jump stitches. Carefully cut all the way around, keeping your cutting within 1/8 of an inch from the stitches.



7. You will now attach your snaps. Apply them using the instructions that came with your snaps and applicator. Just make sure that the front of the snaps (the smooth circle) is showing on the front side of the design.



8. Attach a key ring or swivel hook, then snap closed.

The key fob being used for the photos is called Antique Sewing Machine and is also available at my website!

Be sure to visit the "TIPS" section for some great articles on tips, techniques, ideas, and organization.

For more fun embroidery designs and patterns visit:

[In the Hoop by Sher](#)

If you change the size or density of the original design, you could alter the final result.

Color Sequence

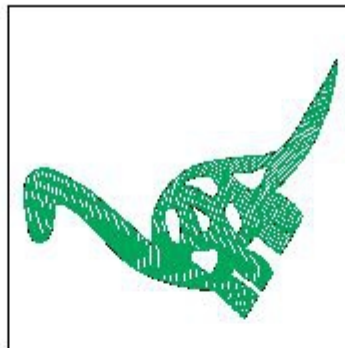
DinosaurKF

Hatch Embroidery Software

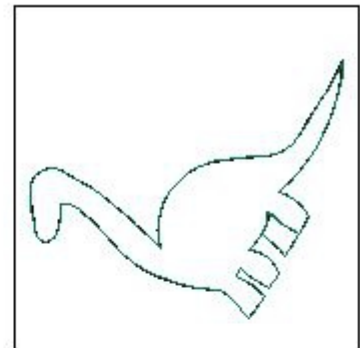
Stitches: 4549
Colors: 5
Zoom: 0.60
3.11 in
2.82 in



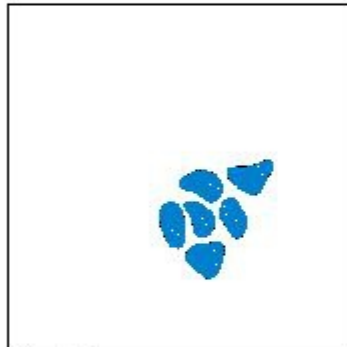
Stop #: 1
Code: 224
Name: Yellow - Golden
Chart: Hatch
Stitches: 241
Thread used: 3.32ft



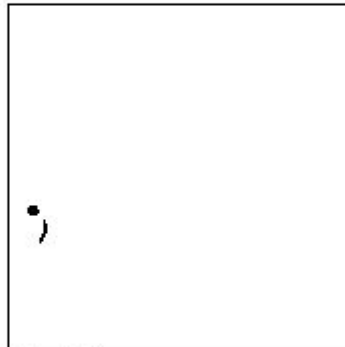
Stop #: 2
Code: 213
Name: Kelly Green
Chart: Hatch
Stitches: 1350
Thread used: 21.11ft



Stop #: 3
Code: 230
Name: Green - Dark
Chart: Hatch
Stitches: 812
Thread used: 11.40ft



Stop #: 4
Code: 3900
Name: Cerulean
Chart: Isacord 40
Stitches: 1323
Thread used: 18.14ft



Stop #: 5
Code: 210
Name: Black
Chart: Hatch
Stitches: 90
Thread used: 0.95ft



Stop #: 6
Code: 224
Name: Yellow - Golden
Chart: Hatch
Stitches: 733
Thread used: 10.12ft