



Creative Fabrica

**Embroidery Design
Sewing Information**

www.creativefabrica.com/embroidery/

© Creative Fabrica

Approval Sheet

Wilcom EmbroideryStudio - Designing

DESIGN12

Design: **Design12**

Title:

Height: 3.13 in
Width: 4.01 in
Colors: 6
Colorway: Colorway 1
Zoom: 1:1



Product type:
Product:
Total qty:
Product colors:
Position:

Terms and Conditions:

Approved By:

Date:

Production Worksheet

Wilcom EmbroideryStudio - Designing

DESIGN12







Design: **Design12**

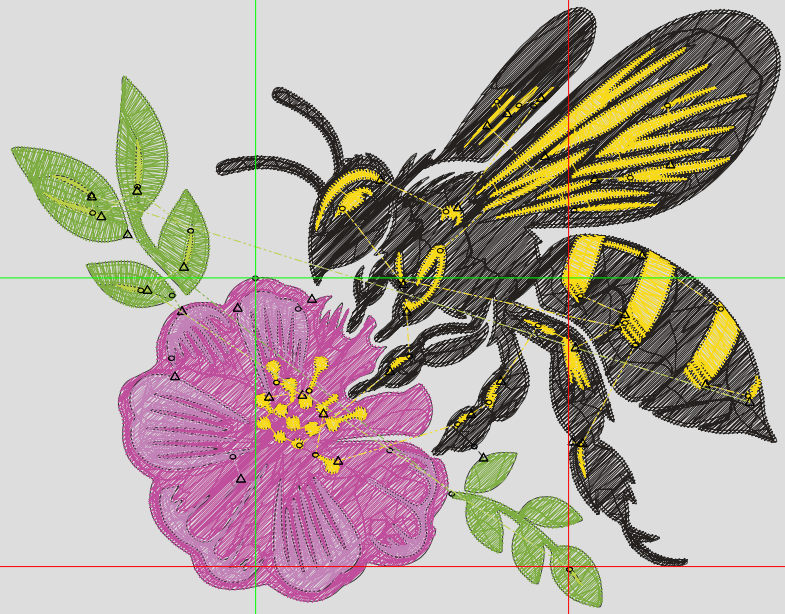
Title:

Stitches: 24,885
Height: 3.13 in
Width: 4.01 in
Colors: 6
Colorway: Colorway 1
Zoom: 1:1

Machine format: Tajima
Color changes: 5
Stops: 6
Trims: 37
Appliqués: 0
Left: 32.3 mm
Right: 69.4 mm
Up: 35.8 mm
Down: 43.6 mm
EndX: 1.63 in
EndY: -1.50 in
Area 12.53 in²
Max stitch: 9.9 mm
Min stitch: 0.0 mm
Max jump: 7.0 mm
Total thread: 335.69ft
Total bobbin: 101.00ft

Stop Sequence:

| # | N# | Color | St. | Code | Name | Chart |
|----|----|---|-------|------|----------------|-------|
| 1. | 17 |  | 5,562 | | R191 G79 B156 | |
| 2. | 19 |  | 3,428 | | R194 G130 B183 | |
| 3. | 18 |  | 2,340 | | R126 G174 B66 | |
| 4. | 16 |  | 8,330 | | R36 G33 B30 | |
| 5. | 20 |  | 4,825 | | R248 G217 B22 | |
| 6. | 21 |  | 398 | | R186 G208 B70 | |



Approval Sheet

Wilcom EmbroideryStudio - Designing

4000

Design: **4000**

Title:

Height: 3.91 in
Width: 5.01 in
Colors: 6
Colorway: Colorway 1
Zoom: 1:1



Product type:
Product:
Total qty:
Product colors:
Position:

Terms and Conditions:

Approved By:

Date:

Production Worksheet

Wilcom EmbroideryStudio - Designing

4000

Design: 4000

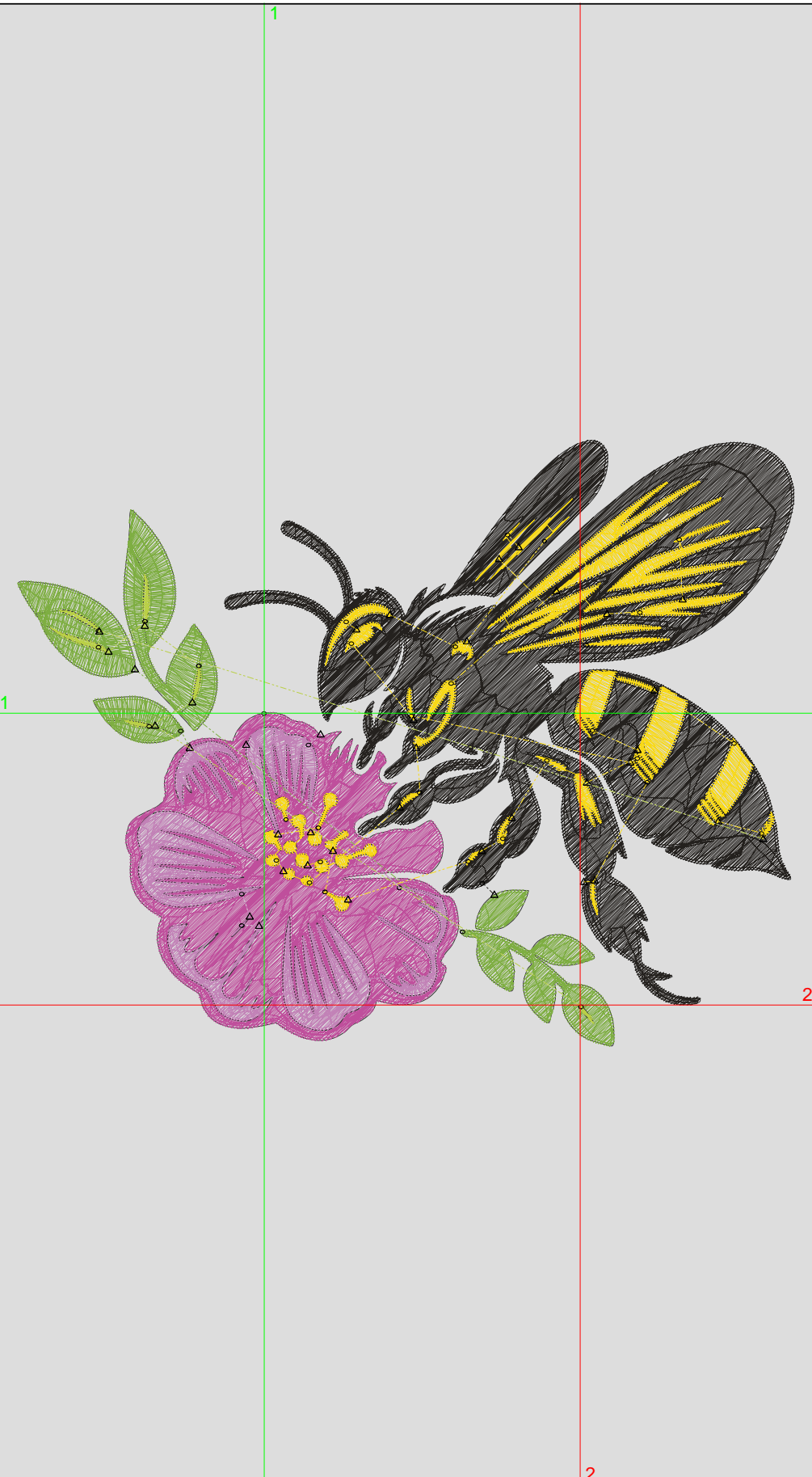
Title:

Stitches: 32,179
 Height: 3.91 in
 Width: 5.01 in
 Colors: 6
 Colorway: Colorway 1
 Zoom: 1:1

Machine format: Tajima
 Color changes: 5
 Stops: 6
 Trims: 39
 Appliqués: 0
 Left: 40.4 mm
 Right: 86.8 mm
 Up: 44.8 mm
 Down: 54.5 mm
 EndX: 2.04 in
 EndY: -1.88 in
 Area: 19.57 in²
 Max stitch: 8.6 mm
 Min stitch: 0.0 mm
 Max jump: 7.0 mm
 Total thread: 456.34ft
 Total bobbin: 144.13ft

Stop Sequence:

| # | N# | Color | St. | Code | Name | Chart |
|----|----|-------|--------|----------------|------|-------|
| 1. | 17 | | 7,310 | R191 G79 B156 | | |
| 2. | 19 | | 4,330 | R194 G130 B183 | | |
| 3. | 18 | | 2,978 | R126 G174 B66 | | |
| 4. | 16 | | 10,892 | R36 G33 B30 | | |
| 5. | 20 | | 6,185 | R248 G217 B22 | | |
| 6. | 21 | | 482 | R186 G208 B70 | | |



Approval Sheet

Wilcom EmbroideryStudio - Designing

4000

Design: 4000

Title:

Height: 4.69 in
Width: 6.01 in
Colors: 6
Colorway: Colorway 1
Zoom: 1:1



Product type:
Product:
Total qty:
Product colors:
Position:

Terms and Conditions:

Approved By:

Date:

Production Worksheet

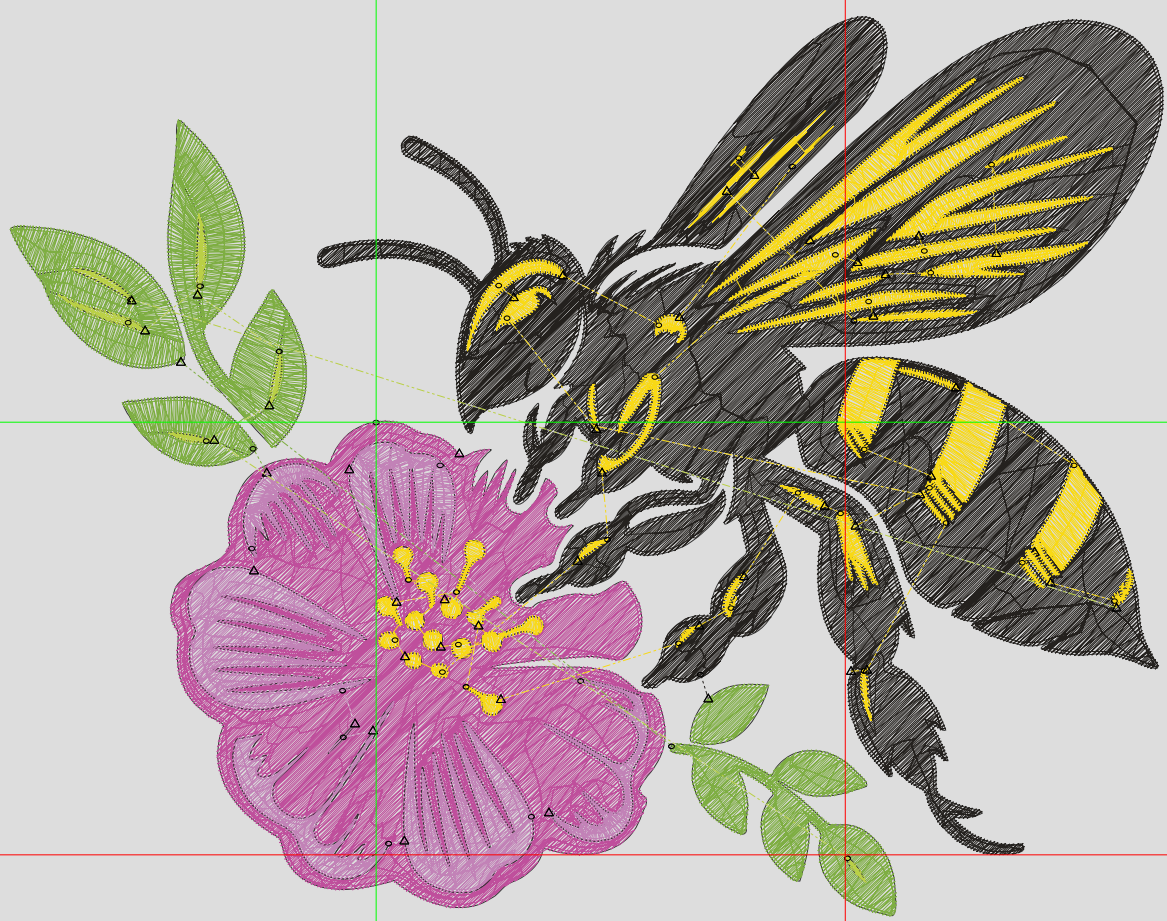
Wilcom EmbroideryStudio - Designing

4000

Design: 4000

Title:

Stitches: 40,032
Height: 4.69 in
Width: 6.01 in
Colors: 6
Colorway: Colorway 1
Zoom: 1:1



Production Worksheet

Wilcom EmbroideryStudio - Designing

* 4000 *







Design: **4000**

Title:

Stitches: 40,032
 Height: 4.69 in
 Width: 6.01 in
 Colors: 6
 Colorway: Colorway 1
 Zoom: 1:1

Machine format: Tajima
 Color changes: 5
 Stops: 6
 Trims: 47
 Appliqués: 0
 Left: 48.5 mm
 Right: 104.1 mm
 Up: 53.7 mm
 Down: 65.4 mm
 EndX: 2.44 in
 EndY: -2.25 in
 Area 28.16 in²
 Max stitch: 10.3 mm
 Min stitch: 0.0 mm
 Max jump: 7.0 mm
 Total thread: 594.65ft
 Total bobbin: 195.56ft

Stop Sequence:

| # | N# | Color | St. | Code | Name | Chart |
|----|----|--|--------|------|----------------|-------|
| 1. | 17 |  | 9,155 | | R191 G79 B156 | |
| 2. | 19 |  | 5,297 | | R194 G130 B183 | |
| 3. | 18 |  | 3,709 | | R126 G174 B66 | |
| 4. | 16 |  | 13,779 | | R36 G33 B30 | |
| 5. | 20 |  | 7,525 | | R248 G217 B22 | |
| 6. | 21 |  | 565 | | R186 G208 B70 | |

Approval Sheet

Wilcom EmbroideryStudio - Designing

4000

Design: 4000

Title:

Height: 5.47 in
Width: 7.01 in
Colors: 6
Colorway: Colorway 1
Zoom: 1:1



Product type:
Product:
Total qty:
Product colors:
Position:

Terms and Conditions:

Approved By:

Date:

Production Worksheet

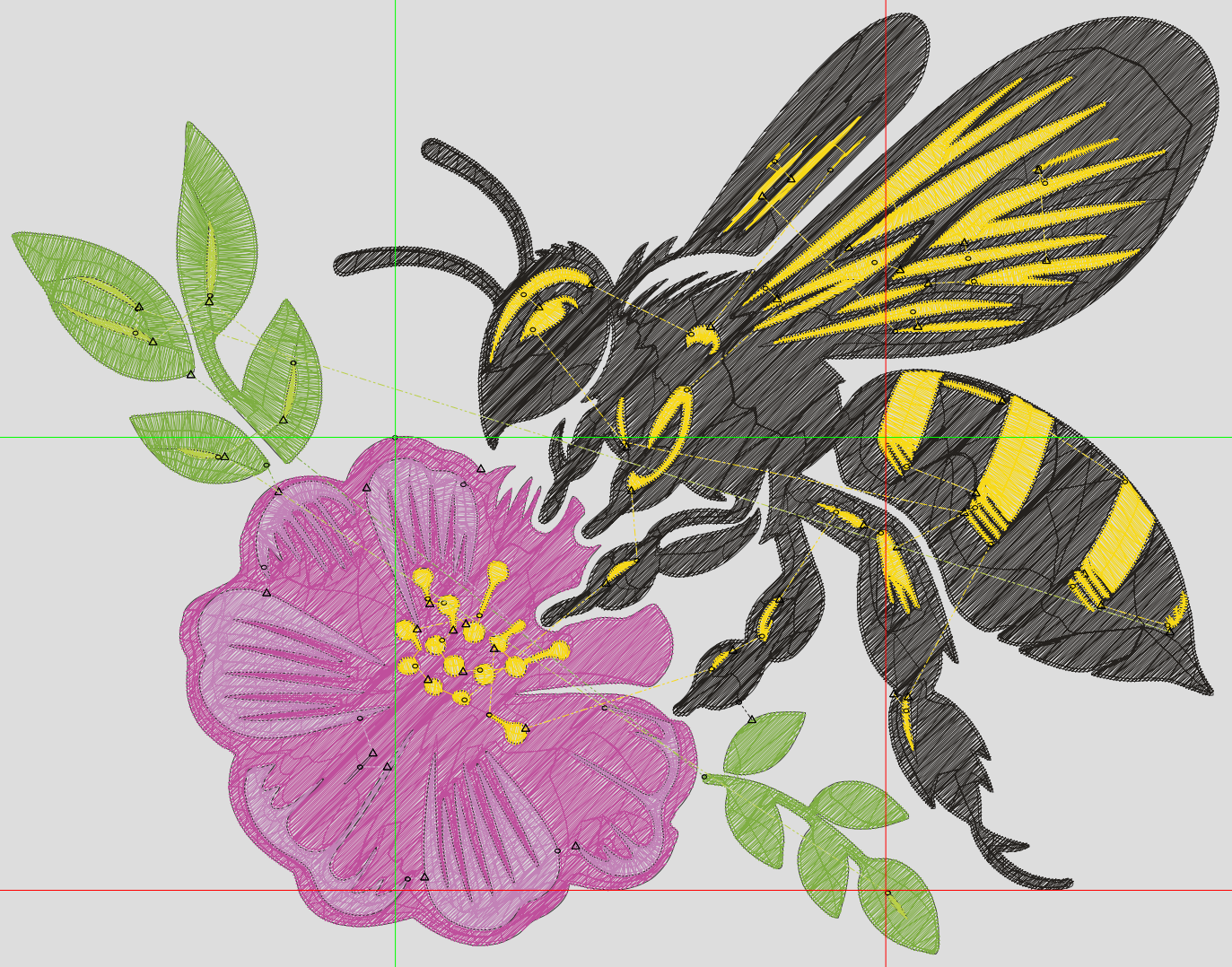
Wilcom EmbroideryStudio - Designing

4000

Design: 4000

Title:

Stitches: 48,226
Height: 5.47 in
Width: 7.01 in
Colors: 6
Colorway: Colorway 1
Zoom: 1:1



Production Worksheet

Wilcom EmbroideryStudio - Designing

* 4000 *







Design: **4000**

Title:

Stitches: 48,226
 Height: 5.47 in
 Width: 7.01 in
 Colors: 6
 Colorway: Colorway 1
 Zoom: 1:1

Machine format: Tajima
 Color changes: 5
 Stops: 6
 Trims: 51
 Appliqués: 0
 Left: 56.5 mm
 Right: 121.4 mm
 Up: 62.6 mm
 Down: 76.3 mm
 EndX: 2.85 in
 EndY: -2.63 in
 Area 38.31 in²
 Max stitch: 11.8 mm
 Min stitch: 0.0 mm
 Max jump: 7.0 mm
 Total thread: 747.31ft
 Total bobbin: 254.16ft

Stop Sequence:

| # | N# | Color | St. | Code | Name | Chart |
|----|----|--|--------|------|----------------|-------|
| 1. | 17 |  | 10,962 | | R191 G79 B156 | |
| 2. | 19 |  | 6,225 | | R194 G130 B183 | |
| 3. | 18 |  | 4,573 | | R126 G174 B66 | |
| 4. | 16 |  | 16,987 | | R36 G33 B30 | |
| 5. | 20 |  | 8,842 | | R248 G217 B22 | |
| 6. | 21 |  | 635 | | R186 G208 B70 | |

Approval Sheet

Wilcom EmbroideryStudio - Designing

4000

Design: 4000

Title:

Height: 6.25 in
Width: 8.01 in
Colors: 6
Colorway: Colorway 1
Zoom: 1:1



Product type:
Product:
Total qty:
Product colors:
Position:

Terms and Conditions:

Approved By:

Date:

Production Worksheet

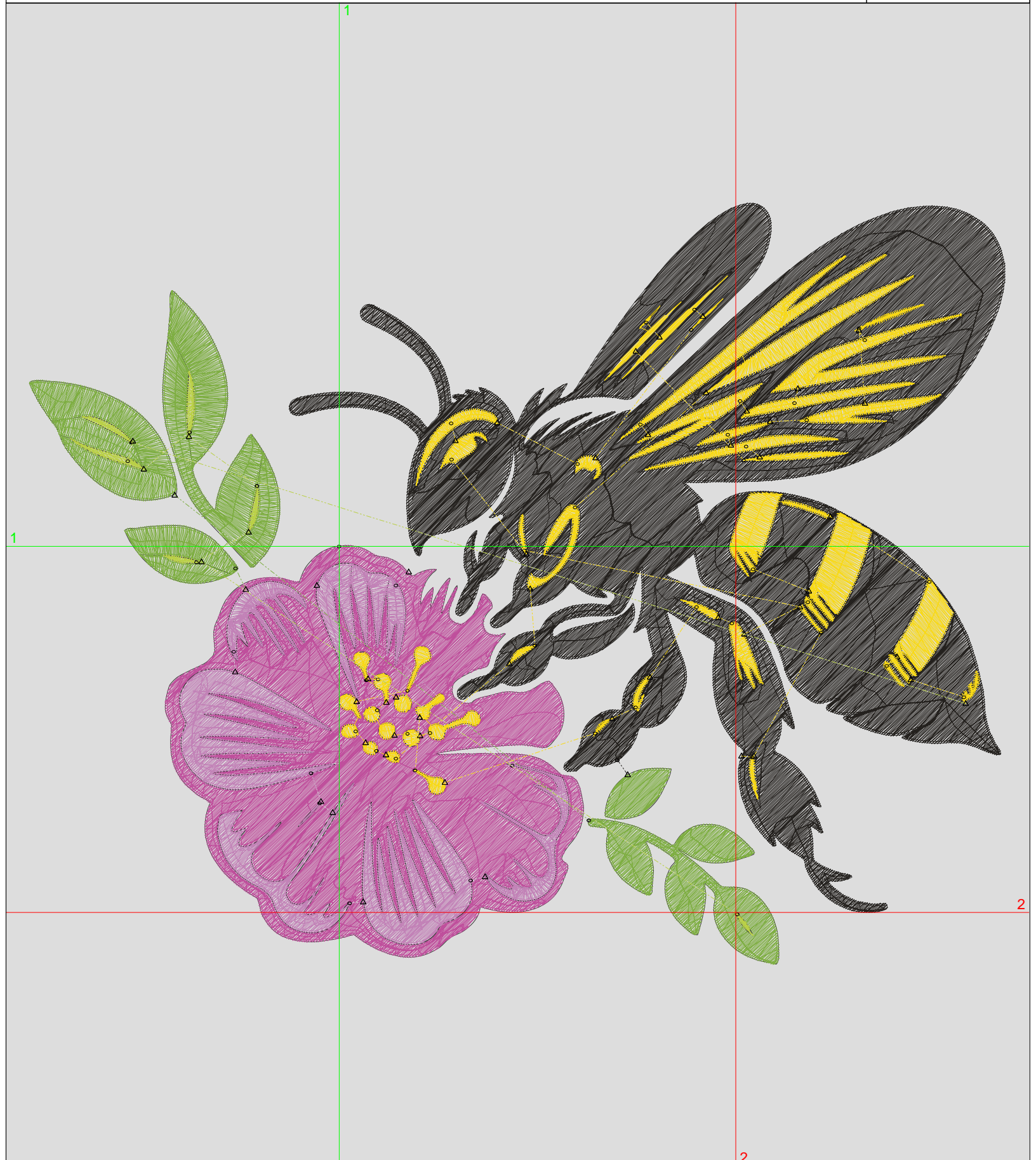
Wilcom EmbroideryStudio - Designing

4000

Design: 4000

Title:

Stitches: 56,920
Height: 6.25 in
Width: 8.01 in
Colors: 6
Colorway: Colorway 1
Zoom: 1:1



Production Worksheet

Wilcom EmbroideryStudio - Designing

4000







Design: **4000**

Title:

Stitches: 56,920
 Height: 6.25 in
 Width: 8.01 in
 Colors: 6
 Colorway: Colorway 1
 Zoom: 1:1

Machine format: Tajima
 Color changes: 5
 Stops: 6
 Trims: 55
 Appliqués: 0
 Left: 64.6 mm
 Right: 138.8 mm
 Up: 71.5 mm
 Down: 87.1 mm
 EndX: 3.25 in
 EndY: -3.00 in
 Area 50.02 in²
 Max stitch: 11.0 mm
 Min stitch: 0.0 mm
 Max jump: 7.0 mm
 Total thread: 912.49ft
 Total bobbin: 318.24ft

Stop Sequence:

| # | N# | Color | St. | Code | Name | Chart |
|----|----|--|--------|------|----------------|-------|
| 1. | 17 |  | 12,924 | | R191 G79 B156 | |
| 2. | 19 |  | 7,242 | | R194 G130 B183 | |
| 3. | 18 |  | 5,411 | | R126 G174 B66 | |
| 4. | 16 |  | 20,401 | | R36 G33 B30 | |
| 5. | 20 |  | 10,218 | | R248 G217 B22 | |
| 6. | 21 |  | 722 | | R186 G208 B70 | |