



Creative Fabrica

**Embroidery Design
Sewing Information**

www.creativefabrica.com/embroidery/

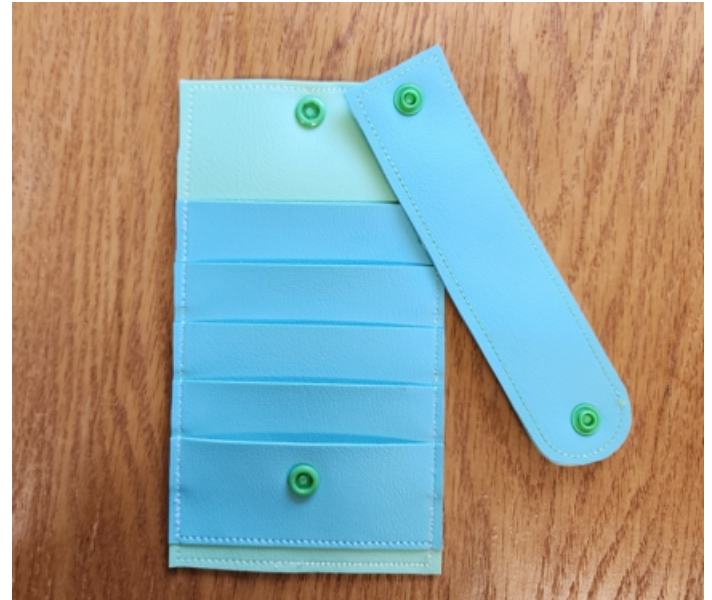
© Creative Fabrica



Email:
sheryl@sherscreativespace.com

Basic Card Wallet with Basic Tab

Safe place to hold your credit cards,
loyalty cards, and gift cards!



This wallet is designed to work with the basic tab, which comes with this file, or you can use the decorative tabs (sold separately).

I wanted to make a card wallet that would hold as many cards as I could get that would fit a 5x7 inch hoop. I also wanted it to fit the cards perfectly. By that I mean I wanted them to fit into the slots easily yet be snug enough so they don't fall out. I also wanted it to be a nice stitch-out for you. It was important for me to make it so that you are never stitching through more than three layers at one time. Of course I wanted it to be compatible with the many cute tabs that you could switch out with your mood, or make a gift for someone that will reflect their personality.

About sixteen broken needles and an enormous amount of vinyl later, I finally got it! It took me so many tries with measurements and techniques to be able to bring you an easy to stitch credit card wallet.

I'm also going to give you some tips that will allow you to make this wallet with a great stitch-out.

I love sewing with vinyl and you can get it in so many fun colors. When embroidering on vinyl, it's best to use marine vinyl. Some vinyls have special backings so that they can be transferred with heat or just have an adhesive backing. **Don't use those!** Your machine and needle will not be happy. There is also glitter vinyl, printed vinyl, and other decorative vinyl. You can use them as long as they don't have an adhesive backing of any kind.

Here's a tip if you will be using glitter vinyl.....I always tape some tissue paper or tear-away stabilizer over any vinyl pieces I use under the hoop. The glitter vinyl tends to stick to the machine bed so creating a barrier between the machine and the vinyl will solve that problem.

DESIGN SIZE & INFO FOR WALLET

Stitches 1917

Height 6.58 in

Width 4.80 in

DESIGN SIZE & INFO FOR TAB

Stitches 583

Height 5.85

Width 1.22

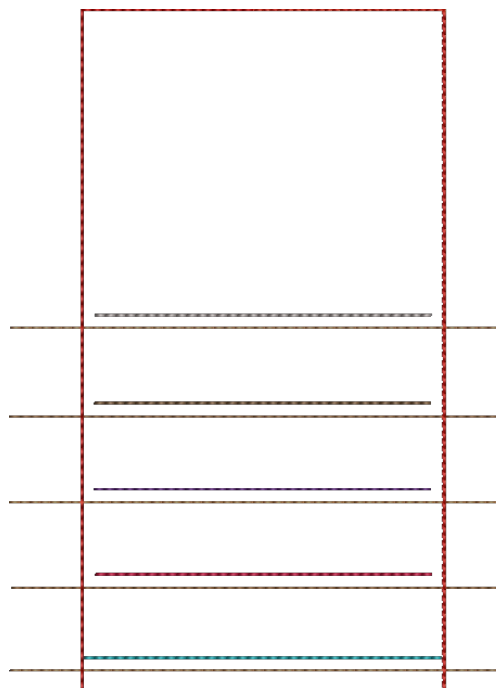
Finished Project Size Wallet:

3 3/4 x 6 3/4 inches

Finished Project Size Tab:

1 1/2 x 6 inches

Basic Tab also included



Supplies for one wallet and one tab (this will be two separate hoopings)

(2) 4 1/2 x 7 1/2 inch piece of vinyl (for wallet)

(5) 4 1/2 x 1 1/2 inch pieces of vinyl (pockets - must cut precisely)

(2) 2 1/2 x 7 inch piece of vinyl (for tab)

Tear-away or cutaway stabilizer, a piece big enough for you to completely hoop (twice if also making the tab)

Embroidery thread, your choice of colors but matching bobbin thread will give a much nicer look

2 sets of snaps, KAM Snaps were used in this project

Embroidery needle, size 11 (I use Organ 15X15T)

General supplies:

Scissors, pins or scotch tape or painters tape (my personal favorite), embroidery needles, embroidery machine

NOTE: The first hooping will be for the wallet. The second hooping will be for the tab. This wallet comes with a basic wallet tab, but you can use a cute one instead of this basic tab. I have some wallet tabs in my shop that are sold separately.

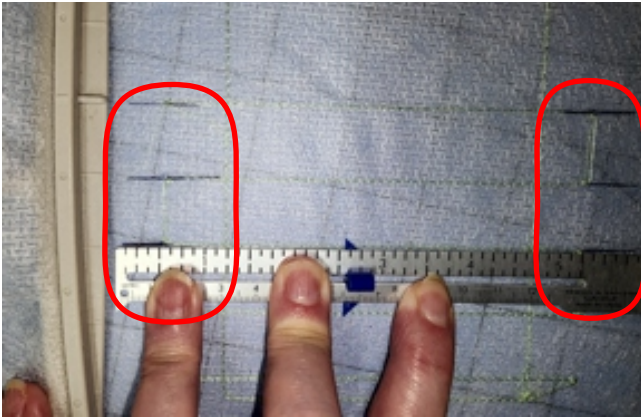
7 1/2 x 4 1/2 in	4 1/2 x 1 1/2 in
	4 1/2 x 1 1/2 in
	4 1/2 x 1 1/2 in
7 1/2 x 4 1/2 in	4 1/2 x 1 1/2 in
	4 1/2 x 1 1/2 in

You will be able to get one wallet (without the tab) from one 9x12 inch piece of vinyl if you cut the vinyl as shown in the image at the left.



1. Load the file into your machine.

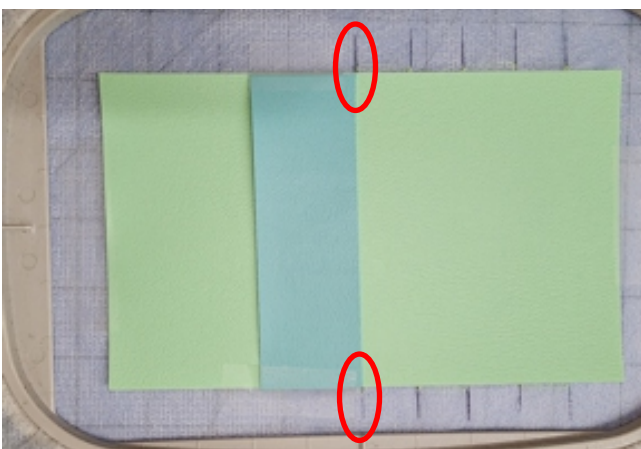
2. Hoop the stabilizer and snap onto the machine. Do not put the vinyl on yet. The first stitching will be your placement stitches. You will stitch this right onto the stabilizer. Be sure to have top thread and bobbin thread to match your vinyl.



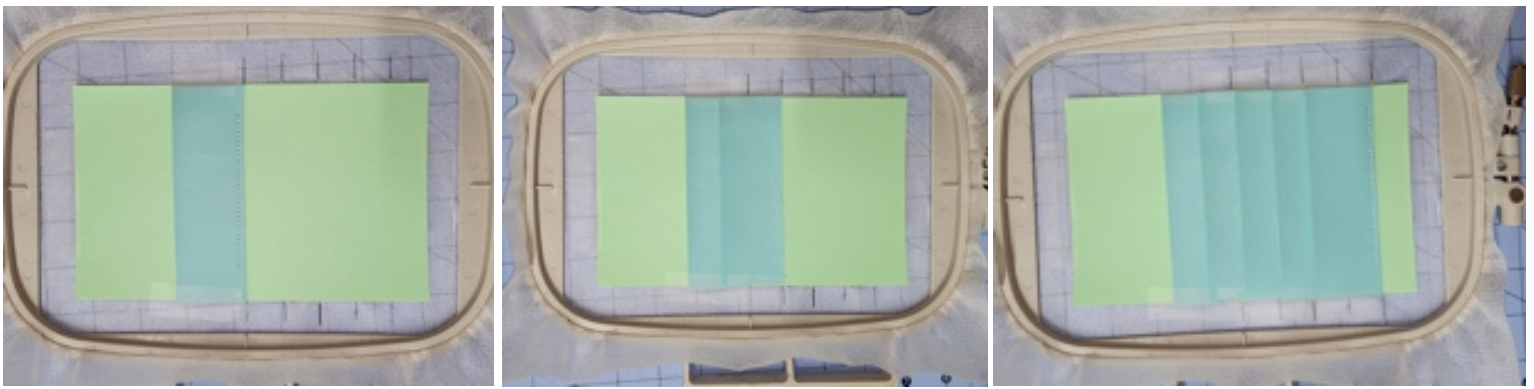
3. I like to extend my lines with a pen so I can see them better. Placement of your 4 1/2 x 1 1/2 inch pieces of vinyl must be precise. Cutting them must also be precise. The last thing you want to do is cut them too big, or place them above or below the lines because it will add to the bulk. I designed this wallet so it will create the least amount of bulk as possible. Less bulk makes a much nicer stitch-out.



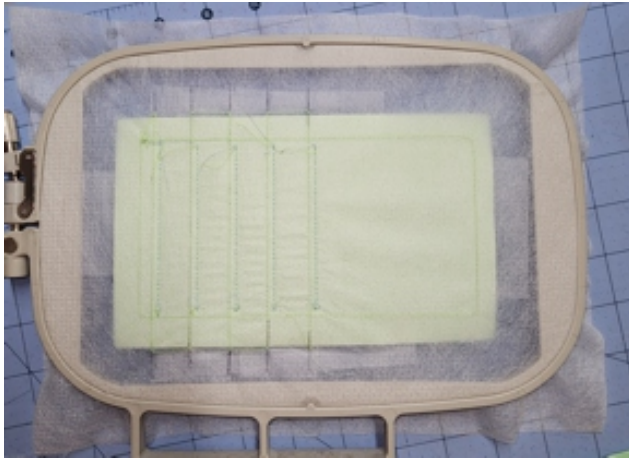
4. Place one of your larger vinyl pieces with right side facing up on the front of your hoop. Secure with some tape.



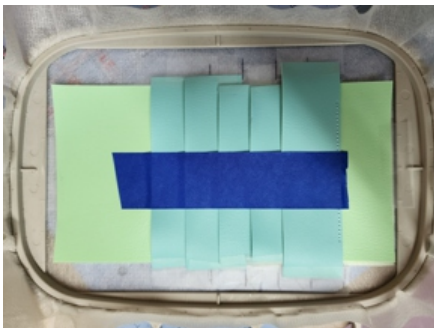
5. Place your first pocket piece on the first line (closest to the top). Make sure that your bottom edge is right on the placement line.



6. Repeat this process until you have all five pocket pieces stitched down.



7. Flip the hoop over so you are looking at the back. Place the remaining large piece of vinyl over the stitched area (with right side of vinyl facing up) making sure you are completely covering the outer stitches by at least 1/4 inch. Secure with tape.



8. When doing your final stitching on the wallet, I'm giving you some tips that will make it a smooth stitch-out. I learned the hard way and made all the mistakes so you don't have to! I took extra precautions as you can see above. Before putting the hoop into the machine for the final time, I first placed a piece of wide painters tape (you could use a couple strips of scotch tape) down the center, but a little more to the left of center. I didn't place it in the stitching lines. Then I took a piece of tissue paper and taped it over the entire thing. You can use tear-away stabilizer if you prefer. This is going to keep your needle or presser foot from getting caught on the pockets during stitching. Another thing I did was make your final stitching in two steps. This way your stitching will always be in the direction from bottom of pocket to top of pocket. This will prevent your needle from catching the pockets. First your stitching will stitch from bottom center to top center, then the needle will slide back down to the bottom (smoothly because you taped the pockets down) and then stitch up the remaining side. These extra steps will insure that you will have a smooth, final stitching.

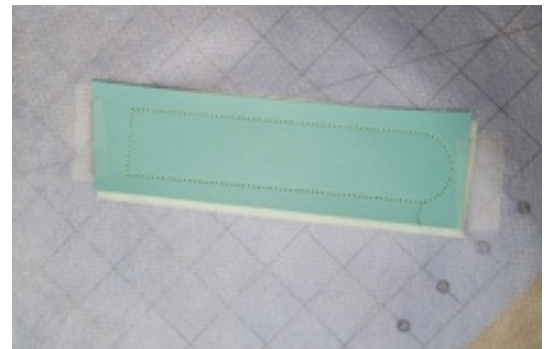
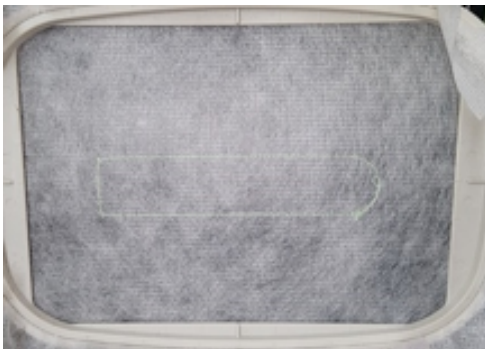


9. Remove from hoop. Tear away the tissue paper or stabilizer from the top and cut about 1/8 to 1/4 inch away from the outer stitching. The cards will fit nice and snug, yet not too snug that they will be hard to get out. After several tries, I believe I found the perfect balance.

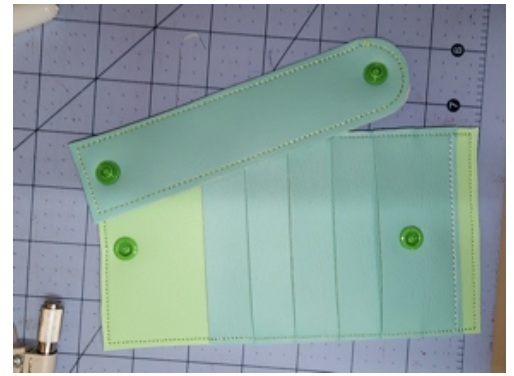
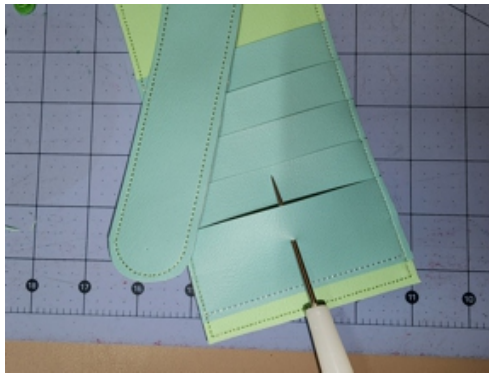
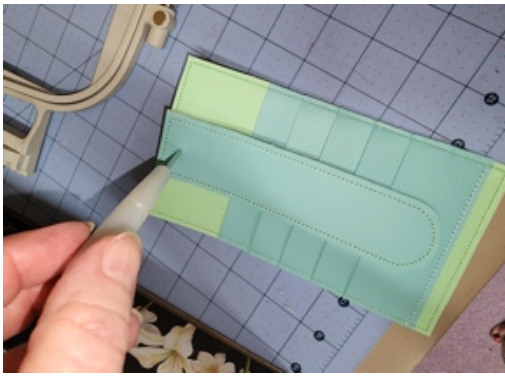
You are still going to need a tab to cover all the cards. Over time, vinyl may stretch with use and you'll want to keep them secure. Follow the super simple instructions below to make the tab that comes with this wallet, or you can search my shop to find a cute one that will match your personality! Since you use snaps, you can swap them out for holidays too!

To Make the Basic Tab

You can omit these steps if you will be making a decorative tab instead.



1. Stitch your placement stitch
2. Place vinyl on front and back at the same time. Right sides will be facing outward.
3. Stitch final stitching step.
4. Remove from hoop and cut around stitches.
5. Attach snaps at top and bottom. Refer to photos on the next page.



Attach your snaps to the wallet first. Then line up the upper edge of the tab with the upper edge of the wallet and attach snap. After attaching the top snap, place the tab over the wallet so you can get the correct placement of the bottom snap. Be sure to follow the manufacturer's instructions for the brand of snaps you are using.

Cute tab embroidery files are sold separately.

Make a fun wallet to match your personality or as a gift for someone else!

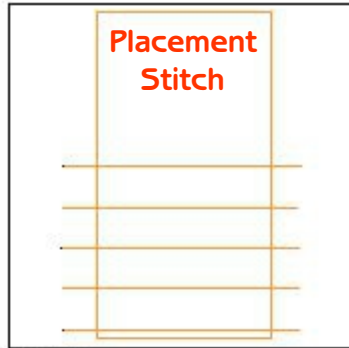


For more fun embroidery designs and patterns visit:

[In the Hoop by Sher](#)

If you change the size or density of the original design, you could alter the final result.

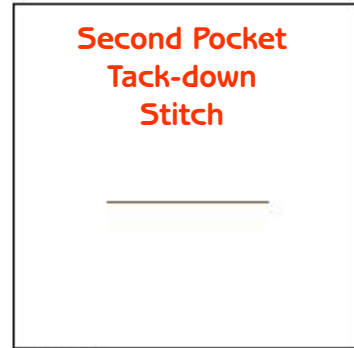
Basic Wallet



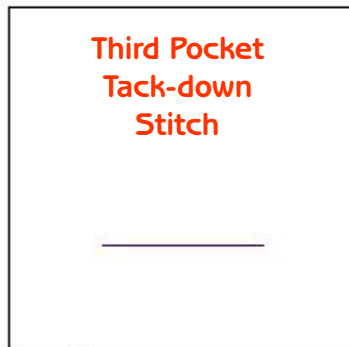
Stop #: 1
Element:
Code: 1300
Name: Tangerine
Chart: Hatch Default
Stitches: 531
Thread used: 8.80ft



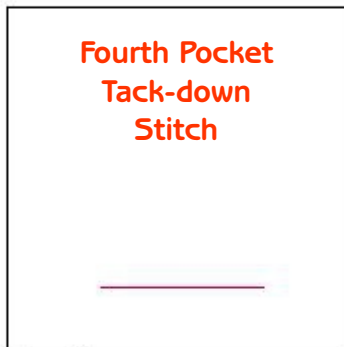
Stop #: 2
Element:
Code: 0142
Name: Sterling
Chart: Hatch Default
Stitches: 111
Thread used: 1.89ft



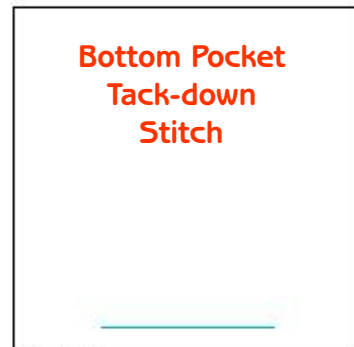
Stop #: 3
Element:
Code: 1876
Name: Chocolate
Chart: Hatch Default
Stitches: 120
Thread used: 1.95ft



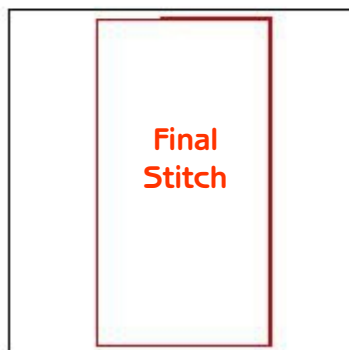
Stop #: 4
Element:
Code: 2900
Name: Deep Purple
Chart: Hatch Default
Stitches: 120
Thread used: 1.95ft



Stop #: 5
Element:
Code: 1903
Name: Lipstick
Chart: Hatch Default
Stitches: 120
Thread used: 1.95ft



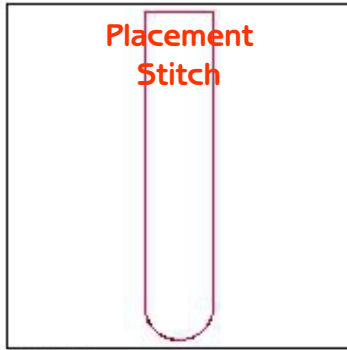
Stop #: 6
Element:
Code: 4010
Name: Caribbean Blue
Chart: Hatch Default
Stitches: 127
Thread used: 2.06ft



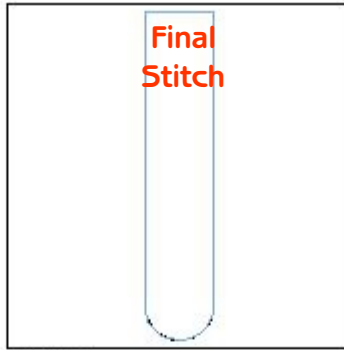
Stop #: 7
Element:
Code: 1902
Name: Poinsettia
Chart: Hatch Default
Stitches: 788
Thread used: 13.08ft

Correct cutting and placement of the pockets are essential. I designed this so you won't be stitching over any more layers than you need to.

Basic Wallet Tab



Stop #: 1
Element:
Code: 1903
Name: Lipstick
Chart: Hatch Default
Stitches: 154
Thread used: 2.62ft



Stop #: 2
Element:
Code: 201
Name: Blue - Med.
Chart: Hatch
Stitches: 429
Thread used: 7.42ft