



Creative Fabrica

**Embroidery Design
Sewing Information**

www.creativefabrica.com/embroidery/

© Creative Fabrica

Production Worksheet

Wilcom EmbroideryStudio - Designing



Design: **3**

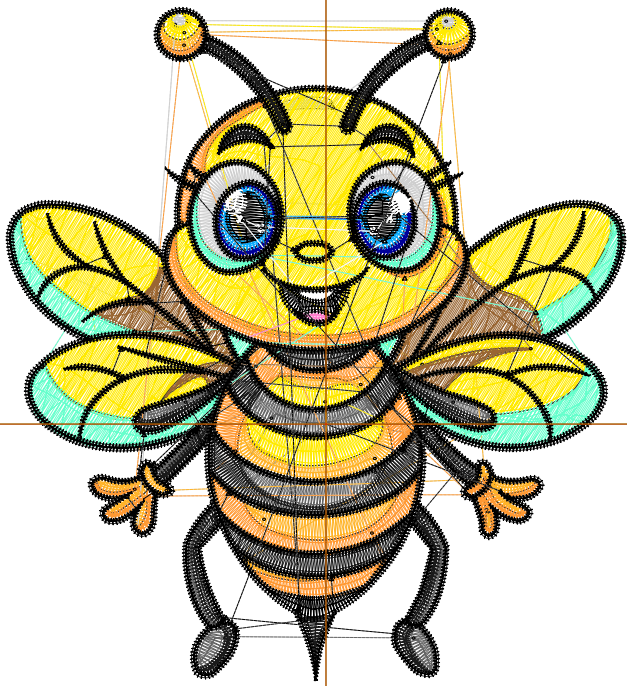
Title:

Stitches: 22,855
 Height: 89.1 mm
 Width: 82.0 mm
 Colors: 13
 Colorway: Colorway 1
 Zoom: 1:1

Machine format: Tajima
 Color changes: 13
 Stops: 14
 Trims: 113
 Appliqués: 0
 Left: 42.4 mm
 Right: 39.7 mm
 Up: 55.1 mm
 Down: 34.0 mm
 EndX: 0.0 mm
 EndY: 0.0 mm
 Area: 7310.1 mm²
 Max stitch: 11.3 mm
 Min stitch: 0.0 mm
 Max jump: 6.8 mm
 Total thread: 95.35m
 Total bobbin: 28.59m

Stop Sequence:

#	N#	Color	St.	Code	Name	Chart
1.	18		878	18	Grey	Default
2.	3		1,072		R255 G180 B41	
3.	4		485		R207 G207 B207	
4.	1		4,074		R255 G234 B1	
5.	12		1,751	12	Orange	Default
6.	2		1,724		R26 G26 B26	
7.	14		895	14	Brown	Default
8.	15		37	15	Pink	Default
9.	17		1,524	17	Turquoise	Default
10.	10		316	10	Dark Blue	Default
11.	6		273		R12 G171 B250	
12.	8		141	8	Black	Default
13.	9		199	9	White	Default
14.	8		9,484	8	Black	Default



Production Worksheet

Wilcom EmbroideryStudio - Designing



Design: **4**

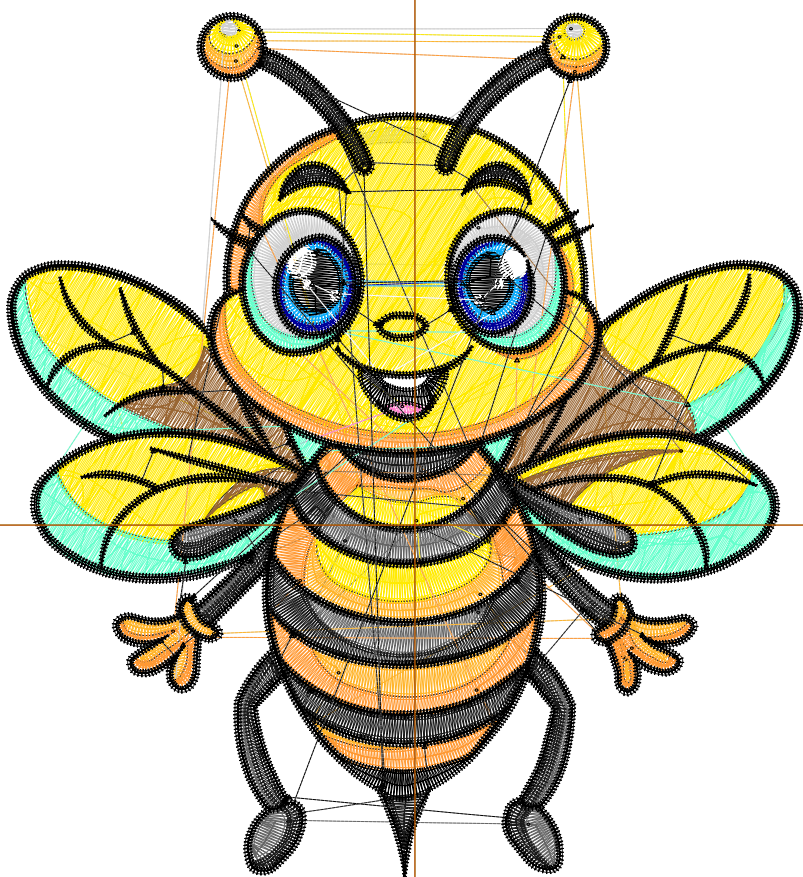
Title:

Stitches: 29,821
 Height: 114.5 mm
 Width: 105.4 mm
 Colors: 13
 Colorway: Colorway 1
 Zoom: 1:1

Machine format: Tajima
 Color changes: 13
 Stops: 14
 Trims: 121
 Appliqués: 0
 Left: 54.0 mm
 Right: 51.4 mm
 Up: 67.8 mm
 Down: 46.7 mm
 EndX: 0.0 mm
 EndY: 0.0 mm
 Area: 12067.7 mm²
 Max stitch: 7.3 mm
 Min stitch: 0.0 mm
 Max jump: 6.9 mm
 Total thread: 134.65m
 Total bobbin: 43.62m

Stop Sequence:

#	N#	Color	St.	Code	Name	Chart
1.	18		1,116	18	Grey	Default
2.	3		1,348		R255 G180 B41	
3.	4		606		R207 G207 B207	
4.	1		5,786		R255 G234 B1	
5.	12		2,237	12	Orange	Default
6.	2		2,189		R26 G26 B26	
7.	14		1,240	14	Brown	Default
8.	15		44	15	Pink	Default
9.	17		2,063	17	Turquoise	Default
10.	10		399	10	Dark Blue	Default
11.	6		339		R12 G171 B250	
12.	8		173	8	Black	Default
13.	9		247	9	White	Default
14.	8		12,032	8	Black	Default



Production Worksheet

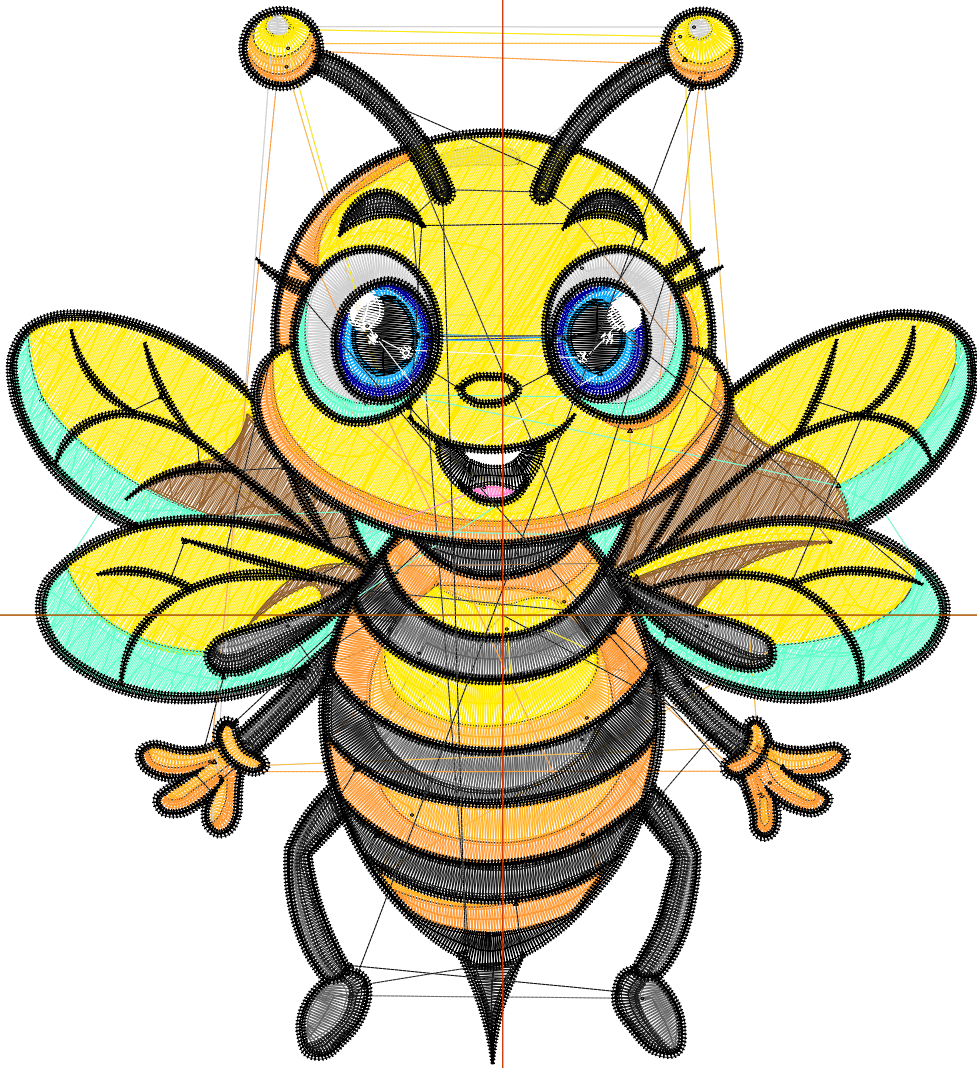
Wilcom EmbroideryStudio - Designing



Design: **5**

Title:

Stitches: 37,219
Height: 139.9 mm
Width: 128.7 mm
Colors: 13
Colorway: Colorway 1
Zoom: 1:1



Production Worksheet

Wilcom EmbroideryStudio - Designing



Design: **5**

Title:

Stitches: 37,219
 Height: 139.9 mm
 Width: 128.7 mm
 Colors: 13
 Colorway: Colorway 1
 Zoom: 1:1

Machine format: Tajima
 Color changes: 13
 Stops: 14
 Trims: 125
 Appliqués: 0
 Left: 65.7 mm
 Right: 63.0 mm
 Up: 80.5 mm
 Down: 59.4 mm
 EndX: 0.0 mm
 EndY: 0.0 mm
 Area: 18009.1 mm²
 Max stitch: 8.8 mm
 Min stitch: 0.0 mm
 Max jump: 7.0 mm
 Total thread: 180.22m
 Total bobbin: 61.85m

Stop Sequence:

#	N#	Color	St.	Code	Name	Chart
1.	18		1,359	18	Grey	Default
2.	3		1,629		R255 G180 B41	
3.	4		736		R207 G207 B207	
4.	1		7,797		R255 G234 B1	
5.	12		2,728	12	Orange	Default
6.	2		2,679		R26 G26 B26	
7.	14		1,651	14	Brown	Default
8.	15		52	15	Pink	Default
9.	17		2,648	17	Turquoise	Default
10.	10		471	10	Dark Blue	Default
11.	6		400		R12 G171 B250	
12.	8		207	8	Black	Default
13.	9		286	9	White	Default
14.	8		14,574	8	Black	Default

Production Worksheet

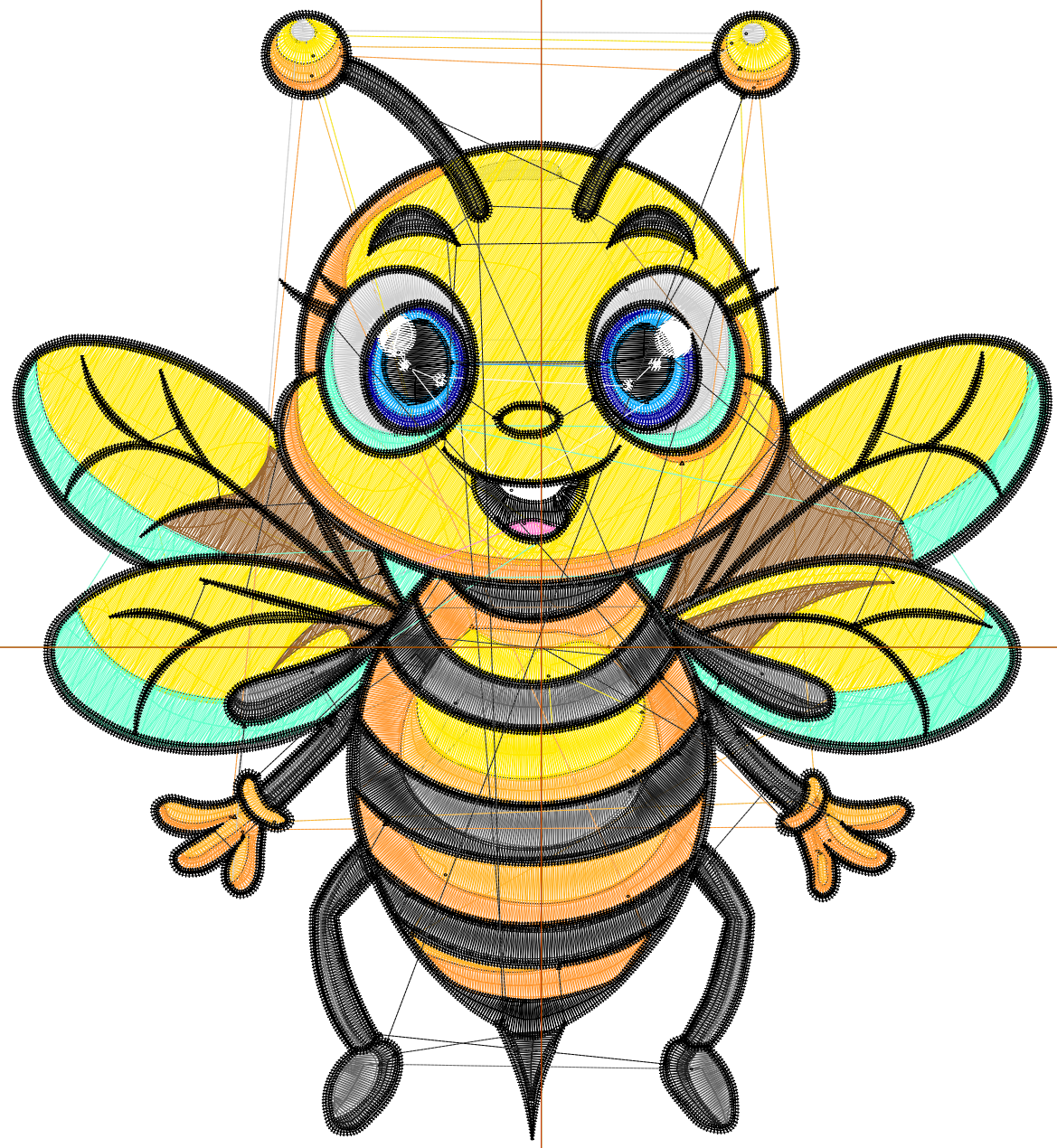
Wilcom EmbroideryStudio - Designing



Design: **6**

Title:

Stitches: 44,948
Height: 165.3 mm
Width: 152.1 mm
Colors: 13
Colorway: Colorway 1
Zoom: 1:1



Production Worksheet

Wilcom EmbroideryStudio - Designing



Design: **6**

Title:

Stitches: 44,948
 Height: 165.3 mm
 Width: 152.1 mm
 Colors: 13
 Colorway: Colorway 1
 Zoom: 1:1

Machine format: Tajima
 Color changes: 13
 Stops: 14
 Trims: 126
 Appliqués: 0
 Left: 77.4 mm
 Right: 74.7 mm
 Up: 93.2 mm
 Down: 72.1 mm
 EndX: 0.0 mm
 EndY: 0.0 mm
 Area: 25137.7 mm²
 Max stitch: 10.4 mm
 Min stitch: 0.0 mm
 Max jump: 7.0 mm
 Total thread: 231.85m
 Total bobbin: 83.29m

Stop Sequence:

#	N#	Color	St.	Code	Name	Chart
1.	18		1,611	18	Grey	Default
2.	3		1,908		R255 G180 B41	
3.	4		864		R207 G207 B207	
4.	1		10,062		R255 G234 B1	
5.	12		3,222	12	Orange	Default
6.	2		3,156		R26 G26 B26	
7.	14		2,090	14	Brown	Default
8.	15		58	15	Pink	Default
9.	17		3,284	17	Turquoise	Default
10.	10		544	10	Dark Blue	Default
11.	6		461		R12 G171 B250	
12.	8		239	8	Black	Default
13.	9		321	9	White	Default
14.	8		17,126	8	Black	Default

Production Worksheet

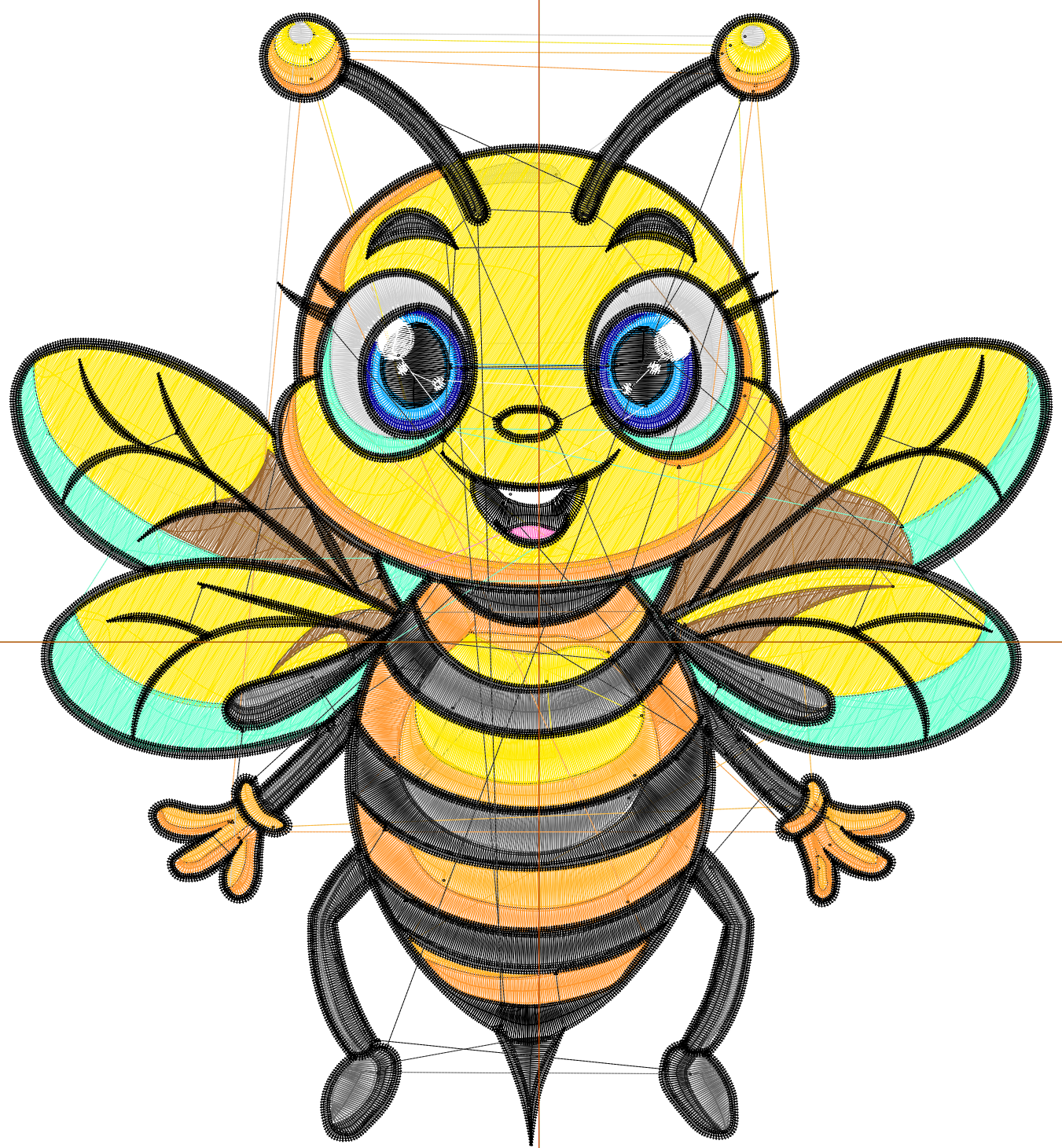
Wilcom EmbroideryStudio - Designing



Design: 7

Title:

Stitches: 53,423
Height: 190.7 mm
Width: 175.4 mm
Colors: 13
Colorway: Colorway 1
Zoom: 1:1



Production Worksheet

Wilcom EmbroideryStudio - Designing



Design: **7**

Title:

Stitches: 53,423
 Height: 190.7 mm
 Width: 175.4 mm
 Colors: 13
 Colorway: Colorway 1
 Zoom: 1:1

Machine format: Tajima
 Color changes: 13
 Stops: 14
 Trims: 128
 Appliqués: 0
 Left: 89.1 mm
 Right: 86.4 mm
 Up: 105.9 mm
 Down: 84.8 mm
 EndX: 0.0 mm
 EndY: 0.0 mm
 Area: 33452.2 mm²
 Max stitch: 11.9 mm
 Min stitch: 0.0 mm
 Max jump: 7.0 mm
 Total thread: 290.97m
 Total bobbin: 108.28m

Stop Sequence:

#	N#	Color	St.	Code	Name	Chart
1.	18		1,878	18	Grey	Default
2.	3		2,207		R255 G180 B41	
3.	4		1,008		R207 G207 B207	
4.	1		12,714		R255 G234 B1	
5.	12		3,738	12	Orange	Default
6.	2		3,672		R26 G26 B26	
7.	14		2,592	14	Brown	Default
8.	15		65	15	Pink	Default
9.	17		4,036	17	Turquoise	Default
10.	10		622	10	Dark Blue	Default
11.	6		526		R12 G171 B250	
12.	8		274	8	Black	Default
13.	9		366	9	White	Default
14.	8		19,723	8	Black	Default