



Creative Fabrica

**Embroidery Design
Sewing Information**

www.creativefabrica.com/embroidery/

© Creative Fabrica

Production Worksheet

Wilcom EmbroideryStudio - Designing

* 3 INCH *

Design: 3 inch

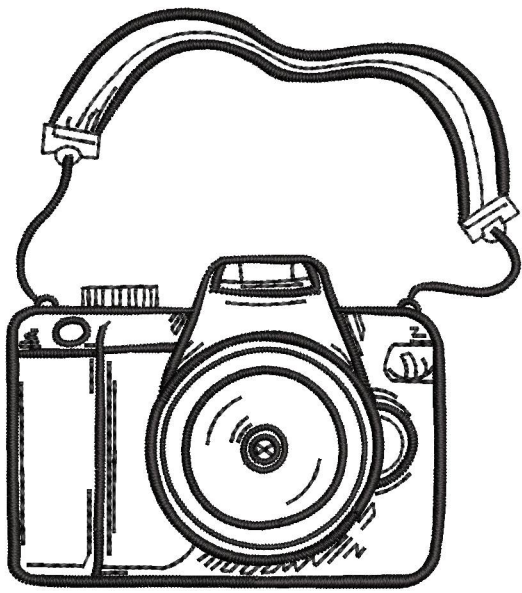
Title:

Stitches: 6,739
 Height: 3.01 in
 Width: 2.68 in
 Colors: 1
 Colorway: Colorway 1
 Zoom: 1:1

Machine format: Janome
 Color changes: 0
 Stops: 1
 Trims: 63
 Appliqués: 0
 Left: 12.3 mm
 Right: 55.7 mm
 Up: 16.2 mm
 Down: 60.4 mm
 EndX: 0.81 in
 EndY: -1.72 in
 Area: 8.06 in²
 Max stitch: 6.9 mm
 Min stitch: 0.0 mm
 Max jump: 6.9 mm
 Total thread: 84.49ft
 Total bobbin: 23.66ft

Stop Sequence:

#	N#	Color	St.	Code	Name	Chart
1.	16	█	6,738	8	Black	User-defined



Color Film

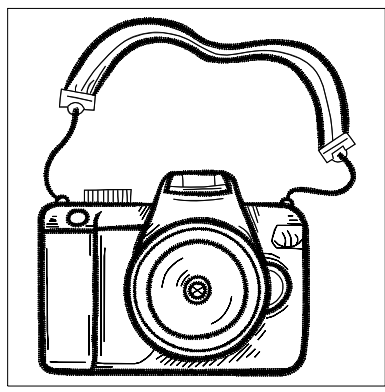
Wilcom EmbroideryStudio - Designing

*** 3 INCH ***

Design: **3 inch**

Title:

Stitches: 6,739
Height: 3.01 in
Width: 2.68 in
Colors: 1
Colorway: Colorway 1
Zoom: 0.62



Stop #: 1
Element:
Code: 8
Name: Black
Chart: User-defined
Stitches: 6,738
Thread used: 84.15ft

Production Worksheet

Wilcom EmbroideryStudio - Designing

* 4 INCH *

Design: 4 inch

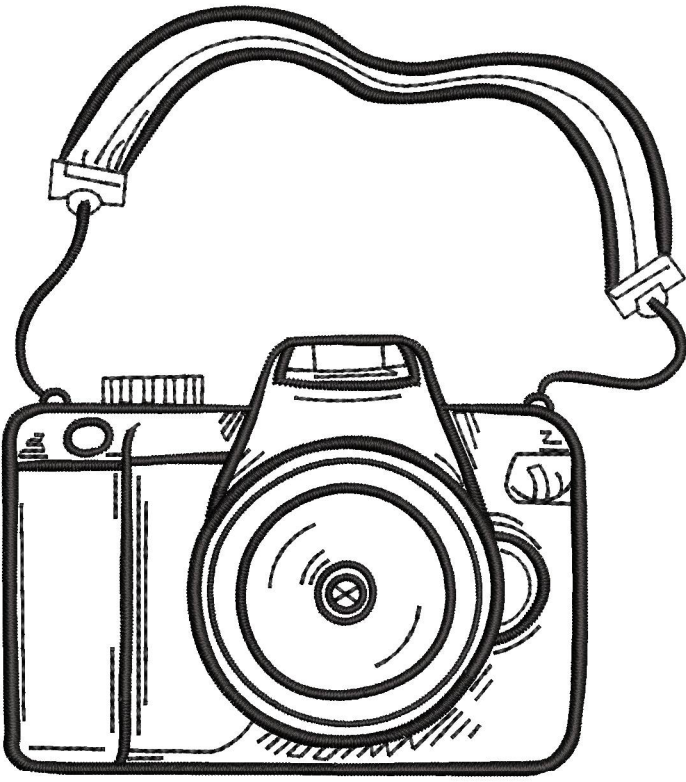
Title:

Stitches: 8,767
 Height: 4.01 in
 Width: 3.56 in
 Colors: 1
 Colorway: Colorway 1
 Zoom: 1:1

Machine format: Janome
 Color changes: 0
 Stops: 1
 Trims: 70
 Appliqués: 0
 Left: 16.2 mm
 Right: 74.3 mm
 Up: 21.6 mm
 Down: 80.3 mm
 EndX: 1.08 in
 EndY: -2.28 in
 Area: 14.30 in²
 Max stitch: 6.8 mm
 Min stitch: 0.0 mm
 Max jump: 6.8 mm
 Total thread: 117.64ft
 Total bobbin: 35.43ft

Stop Sequence:

#	N#	Color	St.	Code	Name	Chart
1.	16	█	8,766	8	Black	User-defined



Color Film

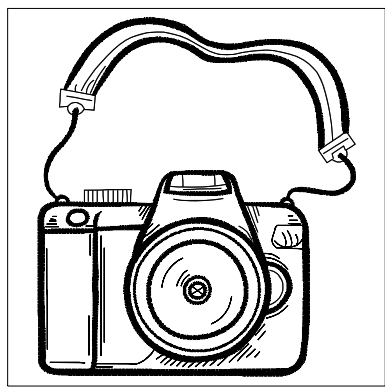
Wilcom EmbroideryStudio - Designing

*** 4 INCH ***

Design: **4 inch**

Title:

Stitches: 8,767
Height: 4.01 in
Width: 3.56 in
Colors: 1
Colorway: Colorway 1
Zoom: 0.47



Stop #: 1
Element:
Code: 8
Name: Black
Chart: User-defined
Stitches: 8,766
Thread used: 117.30ft

Production Worksheet

Wilcom EmbroideryStudio - Designing

5 INCH

Design: 5 inch

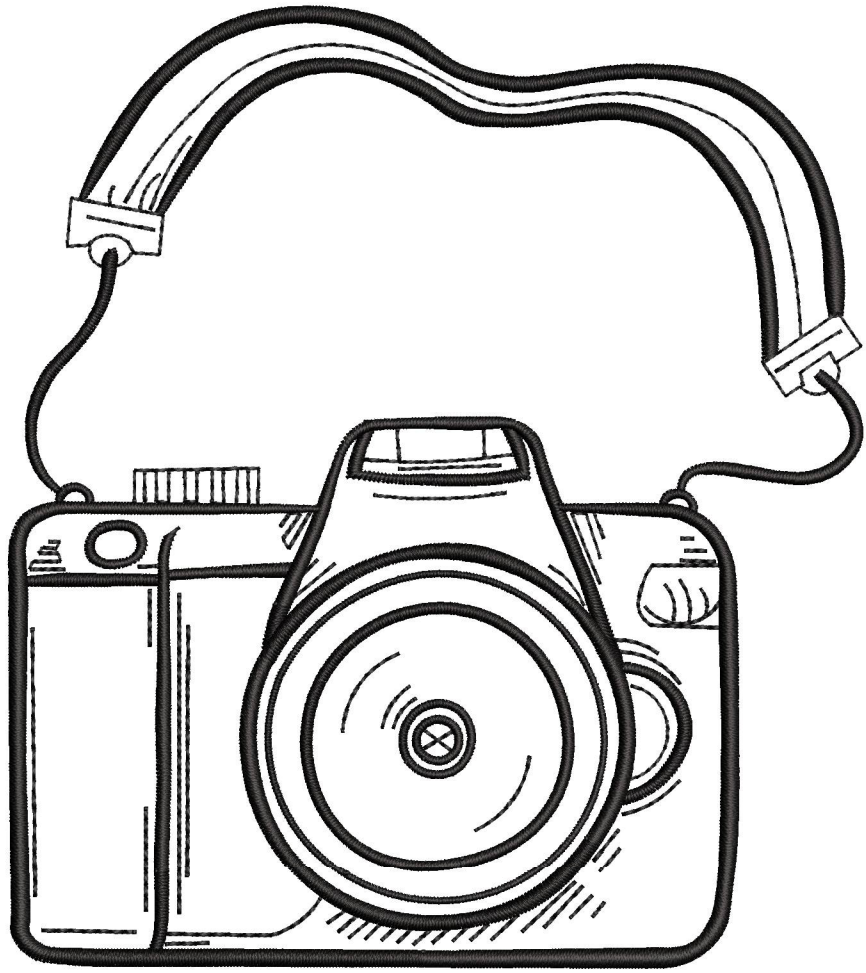
Title:

Stitches: 10,843
 Height: 5.01 in
 Width: 4.45 in
 Colors: 1
 Colorway: Colorway 1
 Zoom: 1:1

Machine format: Janome
 Color changes: 0
 Stops: 1
 Trims: 83
 Appliqués: 0
 Left: 20.4 mm
 Right: 92.7 mm
 Up: 26.7 mm
 Down: 100.6 mm
 EndX: 1.35 in
 EndY: -2.86 in
 Area: 22.32 in²
 Max stitch: 6.9 mm
 Min stitch: 0.0 mm
 Max jump: 6.9 mm
 Total thread: 155.09ft
 Total bobbin: 49.54ft

Stop Sequence:

#	N#	Color	St.	Code	Name	Chart
1.	16	█	10,842	8	Black	User-defined



Color Film

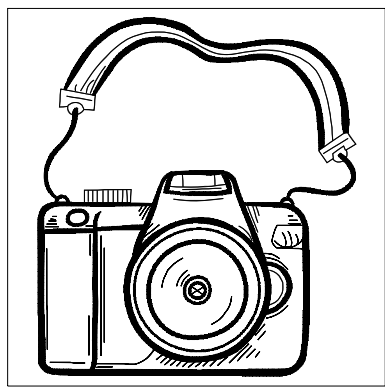
Wilcom EmbroideryStudio - Designing

5 INCH

Design: **5 inch**

Title:

Stitches: 10,843
Height: 5.01 in
Width: 4.45 in
Colors: 1
Colorway: Colorway 1
Zoom: 0.37



Stop #: 1
Element:
Code: 8
Name: Black
Chart: User-defined
Stitches: 10,842
Thread used: 154.75ft

Production Worksheet

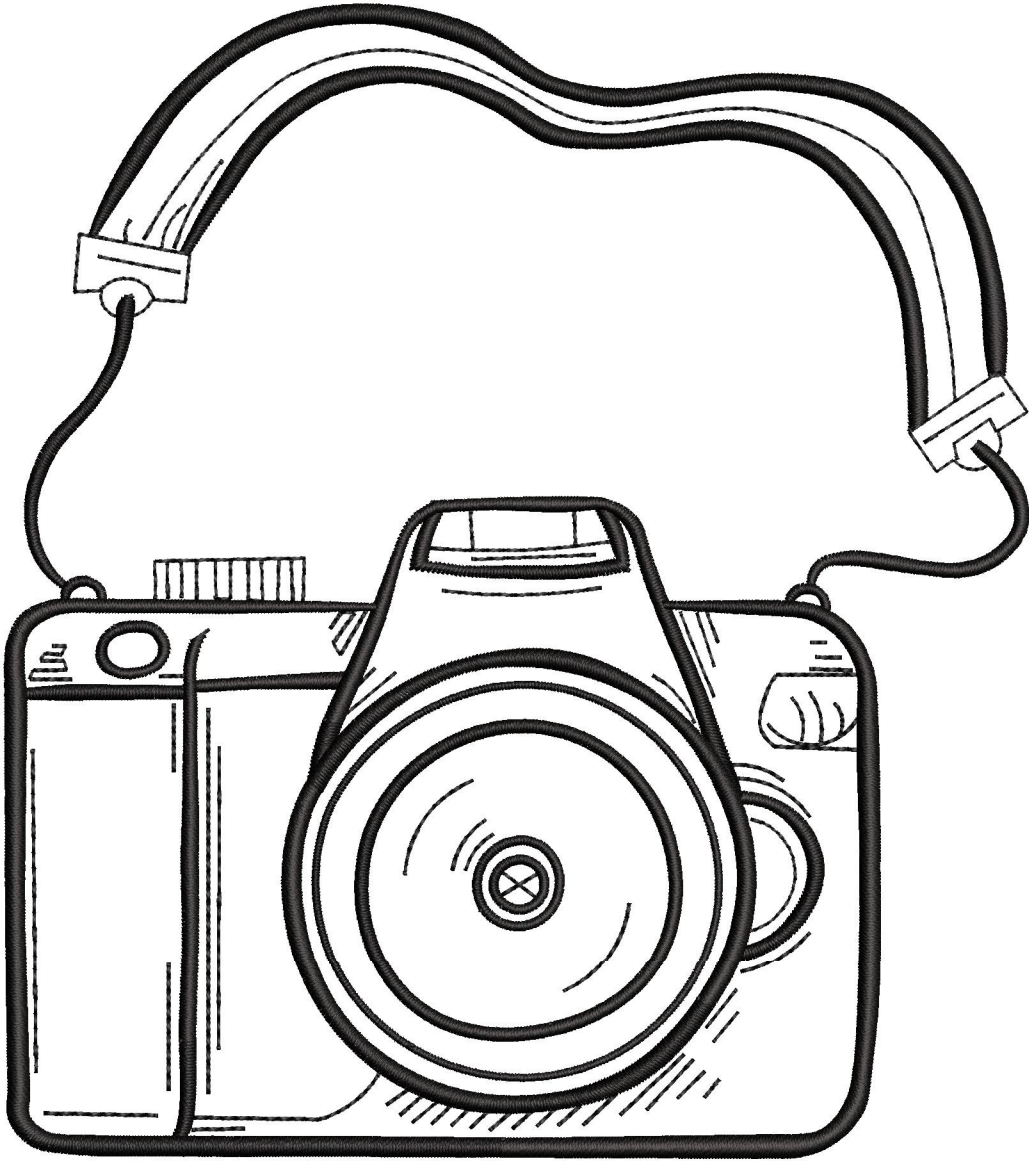
Wilcom EmbroideryStudio - Designing

6 INCH

Design: 6 inch

Title:

Stitches: 12,933
 Height: 6.01 in
 Width: 5.34 in
 Colors: 1
 Colorway: Colorway 1
 Zoom: 1:1



Machine format: Janome
 Color changes: 0
 Stops: 1
 Trims: 88
 Appliqués: 0
 Left: 24.3 mm
 Right: 111.3 mm
 Up: 32.2 mm
 Down: 120.6 mm
 EndX: 1.62 in
 EndY: -3.43 in
 Area: 32.10 in²
 Max stitch: 7.0 mm
 Min stitch: 0.0 mm
 Max jump: 7.0 mm
 Total thread: 197.02ft
 Total bobbin: 66.26ft

Stop Sequence:

#	N#	Color	St.	Code	Name	Chart
1.	16	█	12,932	8	Black	User-defined

Color Film

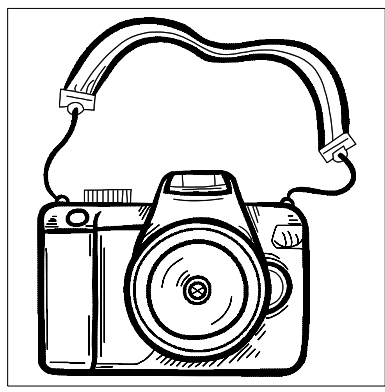
Wilcom EmbroideryStudio - Designing

6 INCH

Design: **6 inch**

Title:

Stitches: 12,933
Height: 6.01 in
Width: 5.34 in
Colors: 1
Colorway: Colorway 1
Zoom: 0.31



Stop #: 1
Element:
Code: 8
Name: Black
Chart: User-defined
Stitches: 12,932
Thread used: 196.68ft

Production Worksheet

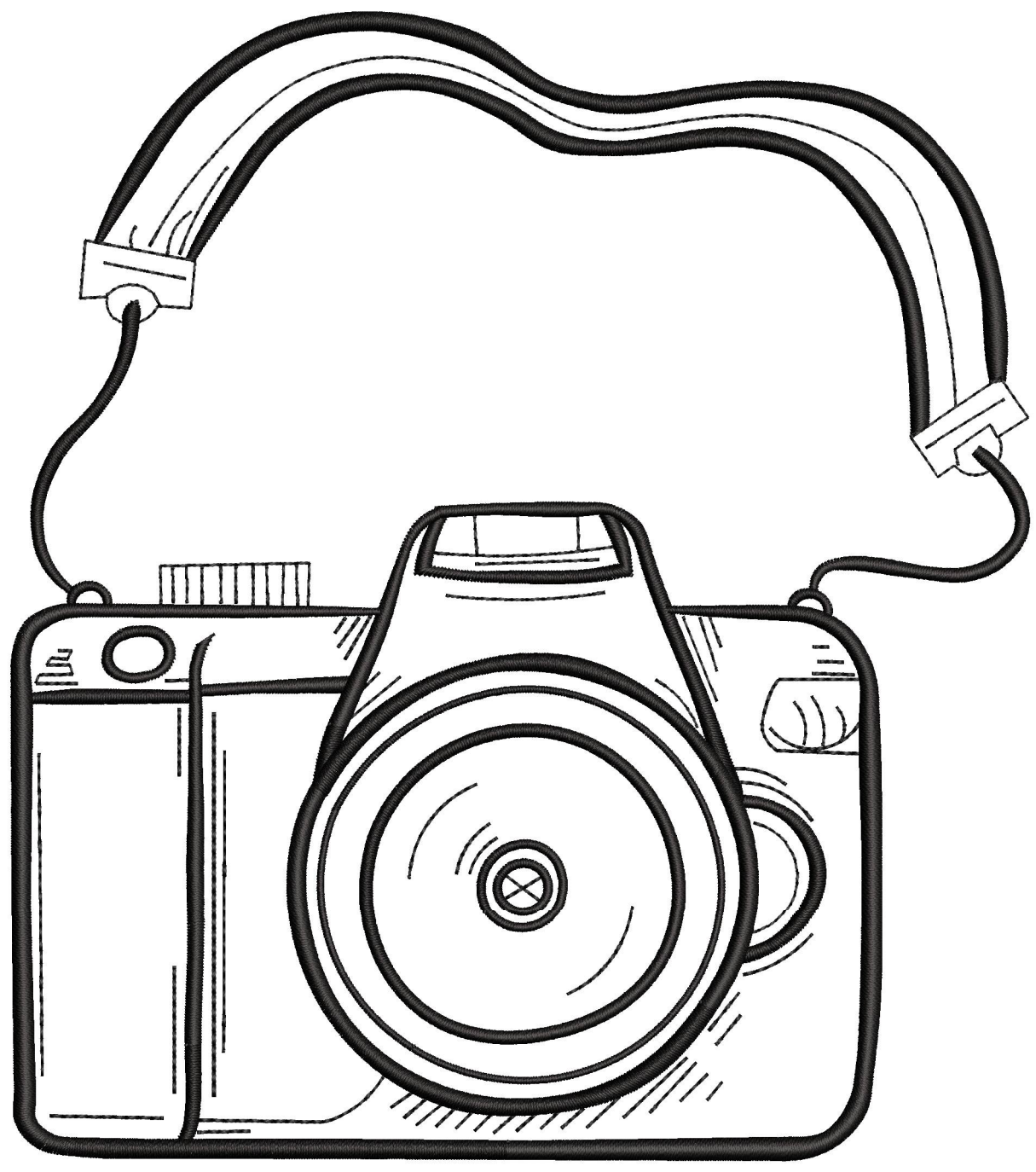
Wilcom EmbroideryStudio - Designing

7 INCH

Design: **7 inch**

Title:

Stitches: 15,154
Height: 7.01 in
Width: 6.23 in
Colors: 1
Colorway: Colorway 1
Zoom: 1:1



Production Worksheet

Wilcom EmbroideryStudio - Designing

7 INCH

Design: **7 inch**

Title:

Stitches: 15,154
 Height: 7.01 in
 Width: 6.23 in
 Colors: 1
 Colorway: Colorway 1
 Zoom: 1:1

Machine format: Janome
 Color changes: 0
 Stops: 1
 Trims: 94
 Appliqués: 0
 Left: 28.5 mm
 Right: 129.7 mm
 Up: 37.3 mm
 Down: 140.9 mm
 EndX: 1.89 in
 EndY: -4.01 in
 Area: 43.67 in²
 Max stitch: 7.0 mm
 Min stitch: 0.0 mm
 Max jump: 7.0 mm
 Total thread: 244.91ft
 Total bobbin: 86.01ft

Stop Sequence:

#	N#	Color	St.	Code	Name	Chart
1.	16	█	15,153	8	Black	User-defined

Color Film

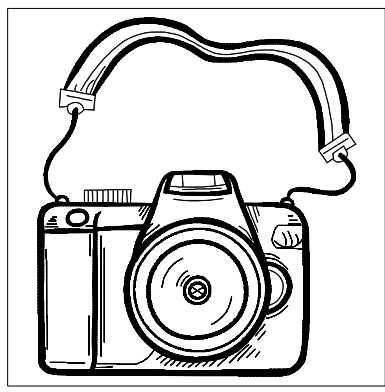
Wilcom EmbroideryStudio - Designing

7 INCH

Design: **7 inch**

Title:

Stitches: 15,154
Height: 7.01 in
Width: 6.23 in
Colors: 1
Colorway: Colorway 1
Zoom: 0.27



Stop #: 1
Element:
Code: 8
Name: Black
Chart: User-defined
Stitches: 15,153
Thread used: 244.57ft