



Creative Fabrica

**Embroidery Design
Sewing Information**

www.creativefabrica.com/embroidery/

© Creative Fabrica

Production Worksheet

Wilcom EmbroideryStudio - Designing



Design: **3**

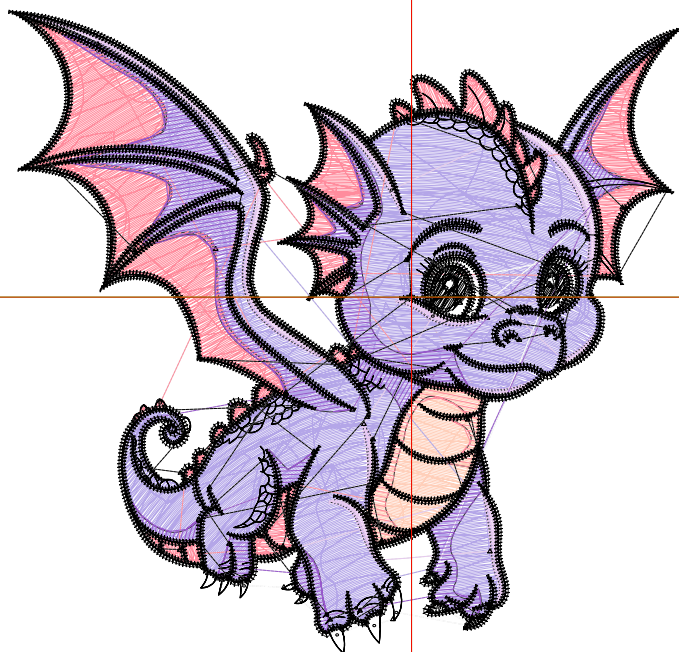
Title:

Stitches: 25,460
Height: 3.35 in
Width: 3.50 in
Colors: 7
Colorway: Colorway 1
Zoom: 1:1

Machine format: Tajima
Color changes: 6
Stops: 7
Trims: 106
Appliqués: 0
Left: 53.3 mm
Right: 35.6 mm
Up: 37.9 mm
Down: 47.2 mm
EndX: 0.00 in
EndY: 0.00 in
Area: 11.73 in²
Max stitch: 6.9 mm
Min stitch: 0.0 mm
Max jump: 6.9 mm
Total thread: 331.51ft
Total bobbin: 96.09ft

Stop Sequence:

#	N#	Color	St.	Code	Name	Chart
1.	4		473		R255 G207 B186	
2.	7		8,523		R180 G166 B232	
3.	9		652	9	White	Default
4.	5		1,124		R231 G201 B240	
5.	3		3,074		R255 G140 B157	
6.	2		1,202		R152 G88 B204	
7.	28		10,410	8	Black	Default



Production Worksheet

Wilcom EmbroideryStudio - Designing



Design: **4**

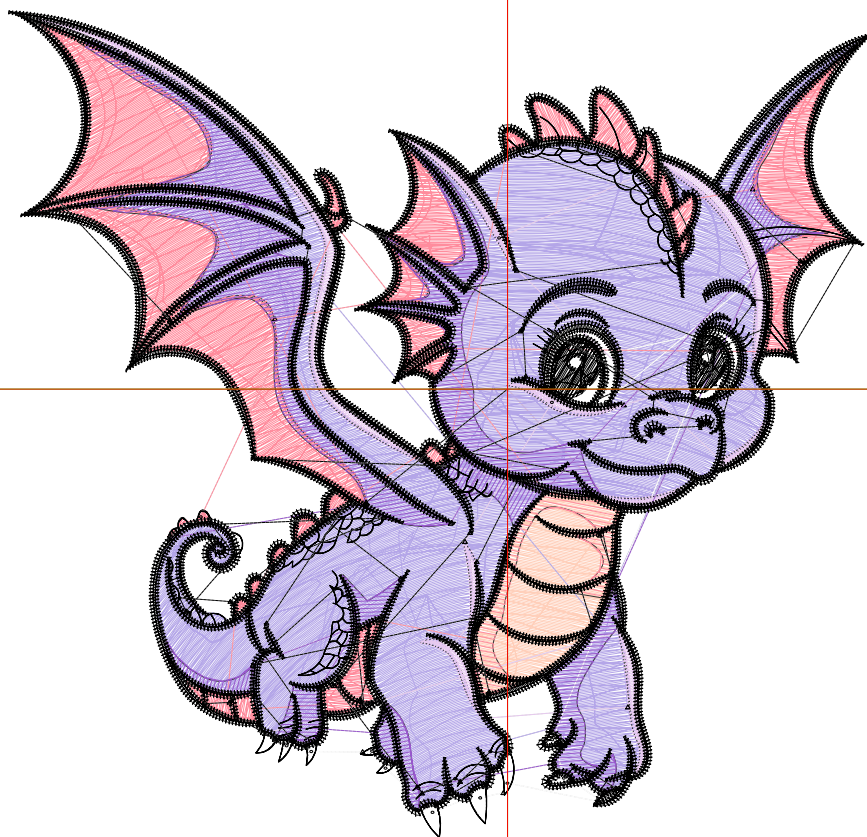
Title:

Stitches: 34,347
Height: 4.31 in
Width: 4.50 in
Colors: 7
Colorway: Colorway 1
Zoom: 1:1

Machine format: Tajima
Color changes: 6
Stops: 7
Trims: 111
Appliqués: 0
Left: 66.0 mm
Right: 48.3 mm
Up: 50.1 mm
Down: 59.3 mm
EndX: 0.00 in
EndY: 0.00 in
Area: 19.39 in²
Max stitch: 7.0 mm
Min stitch: 0.0 mm
Max jump: 7.0 mm
Total thread: 473.50ft
Total bobbin: 145.67ft

Stop Sequence:

#	N#	Color	St.	Code	Name	Chart
1.	4		706		R255 G207 B186	
2.	7		12,635		R180 G166 B232	
3.	9		801	9	White	Default
4.	5		1,424		R231 G201 B240	
5.	3		4,209		R255 G140 B157	
6.	2		1,610		R152 G88 B204	
7.	28		12,960	8	Black	Default



Production Worksheet

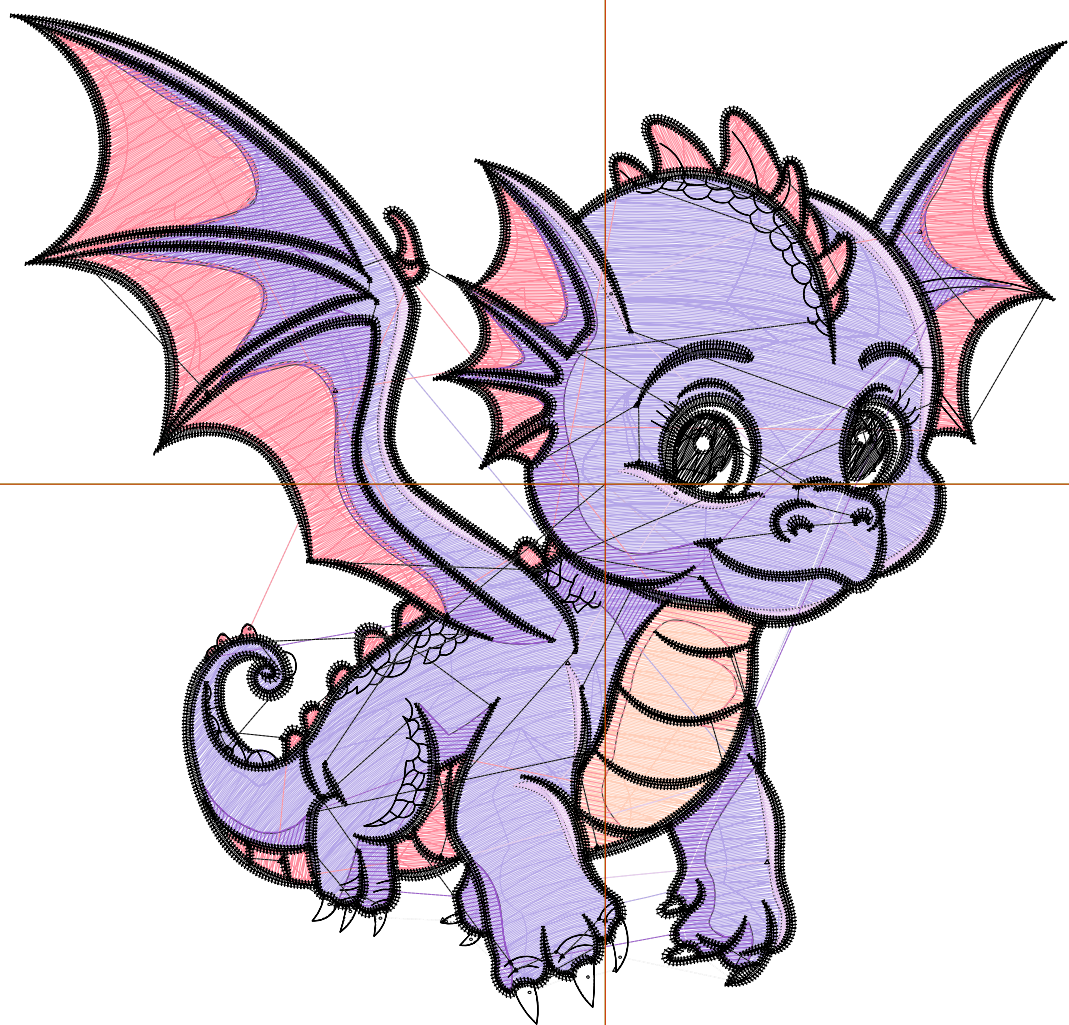
Wilcom EmbroideryStudio - Designing



Design: **5**

Title:

Stitches: 44,132
Height: 5.26 in
Width: 5.50 in
Colors: 7
Colorway: Colorway 1
Zoom: 1:1



Production Worksheet

Wilcom EmbroideryStudio - Designing



Design: **5**

Title:

Stitches: 44,132
 Height: 5.26 in
 Width: 5.50 in
 Colors: 7
 Colorway: Colorway 1
 Zoom: 1:1

Machine format: Tajima
 Color changes: 6
 Stops: 7
 Trims: 116
 Appliqués: 0
 Left: 78.7 mm
 Right: 61.0 mm
 Up: 62.2 mm
 Down: 71.5 mm
 EndX: 0.00 in
 EndY: 0.00 in
 Area 28.95 in²
 Max stitch: 7.0 mm
 Min stitch: 0.0 mm
 Max jump: 7.0 mm
 Total thread: 638.01ft
 Total bobbin: 205.11ft

Stop Sequence:

#	N#	Color	St.	Code	Name	Chart
1.	4		988		R255 G207 B186	
2.	7		17,437		R180 G166 B232	
3.	9		936	9	White	Default
4.	5		1,715		R231 G201 B240	
5.	3		5,455		R255 G140 B157	
6.	2		2,089		R152 G88 B204	
7.	28		15,510	8	Black	Default

Production Worksheet

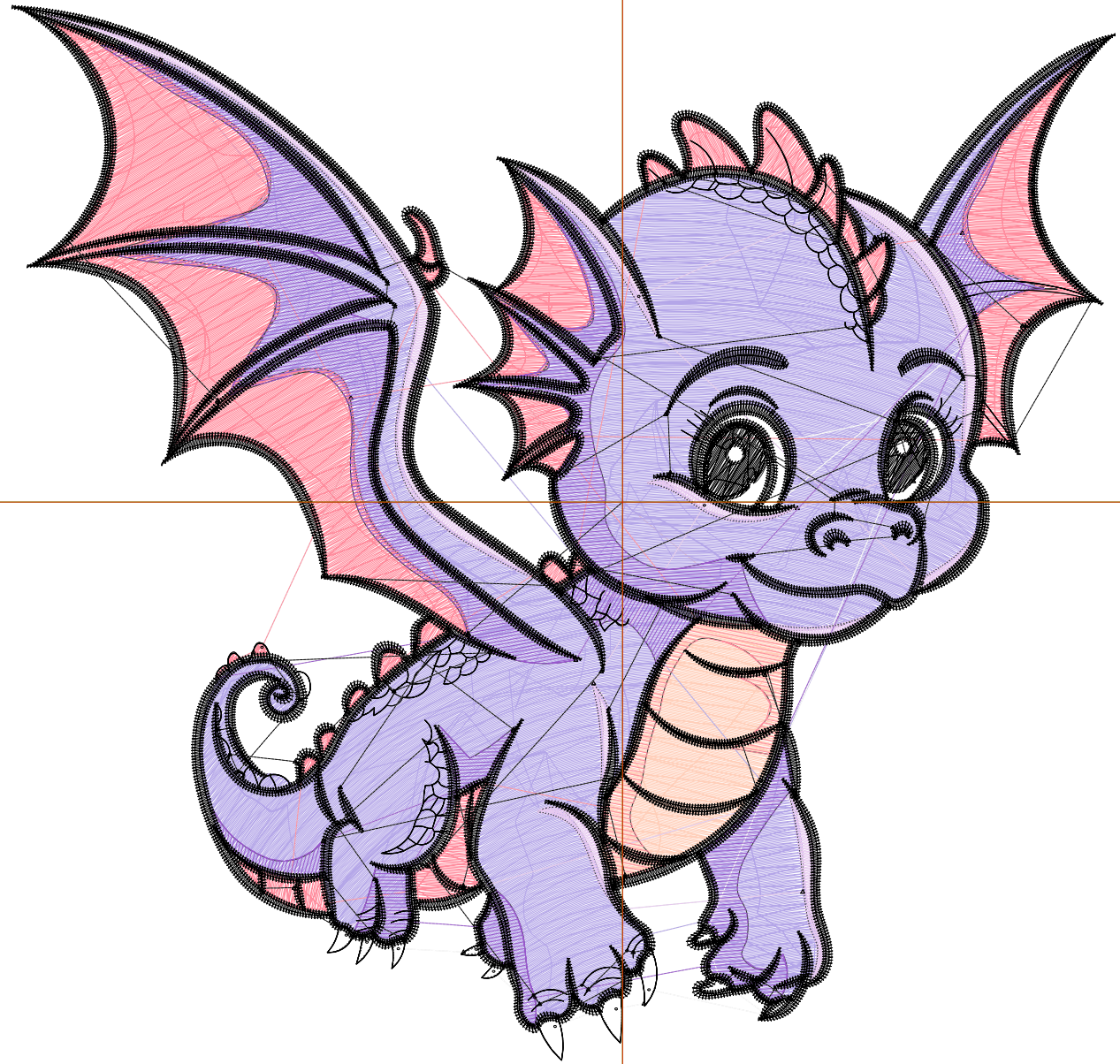
Wilcom EmbroideryStudio - Designing



Design: **6**

Title:

Stitches: 55,398
Height: 6.22 in
Width: 6.50 in
Colors: 7
Colorway: Colorway 1
Zoom: 1:1



Production Worksheet

Wilcom EmbroideryStudio - Designing



Design: **6**

Title:

Stitches: 55,398
 Height: 6.22 in
 Width: 6.50 in
 Colors: 7
 Colorway: Colorway 1
 Zoom: 1:1

Machine format: Tajima
 Color changes: 6
 Stops: 7
 Trims: 123
 Appliqués: 0
 Left: 91.4 mm
 Right: 73.7 mm
 Up: 74.4 mm
 Down: 83.6 mm
 EndX: 0.00 in
 EndY: 0.00 in
 Area 40.43 in²
 Max stitch: 7.0 mm
 Min stitch: 0.0 mm
 Max jump: 7.0 mm
 Total thread: 831.29ft
 Total bobbin: 275.85ft

Stop Sequence:

#	N#	Color	St.	Code	Name	Chart
1.	4		1,309		R255 G207 B186	
2.	7		23,331		R180 G166 B232	
3.	9		1,064	9	White	Default
4.	5		2,023		R231 G201 B240	
5.	3		6,897		R255 G140 B157	
6.	2		2,622		R152 G88 B204	
7.	28		18,150	8	Black	Default

Production Worksheet

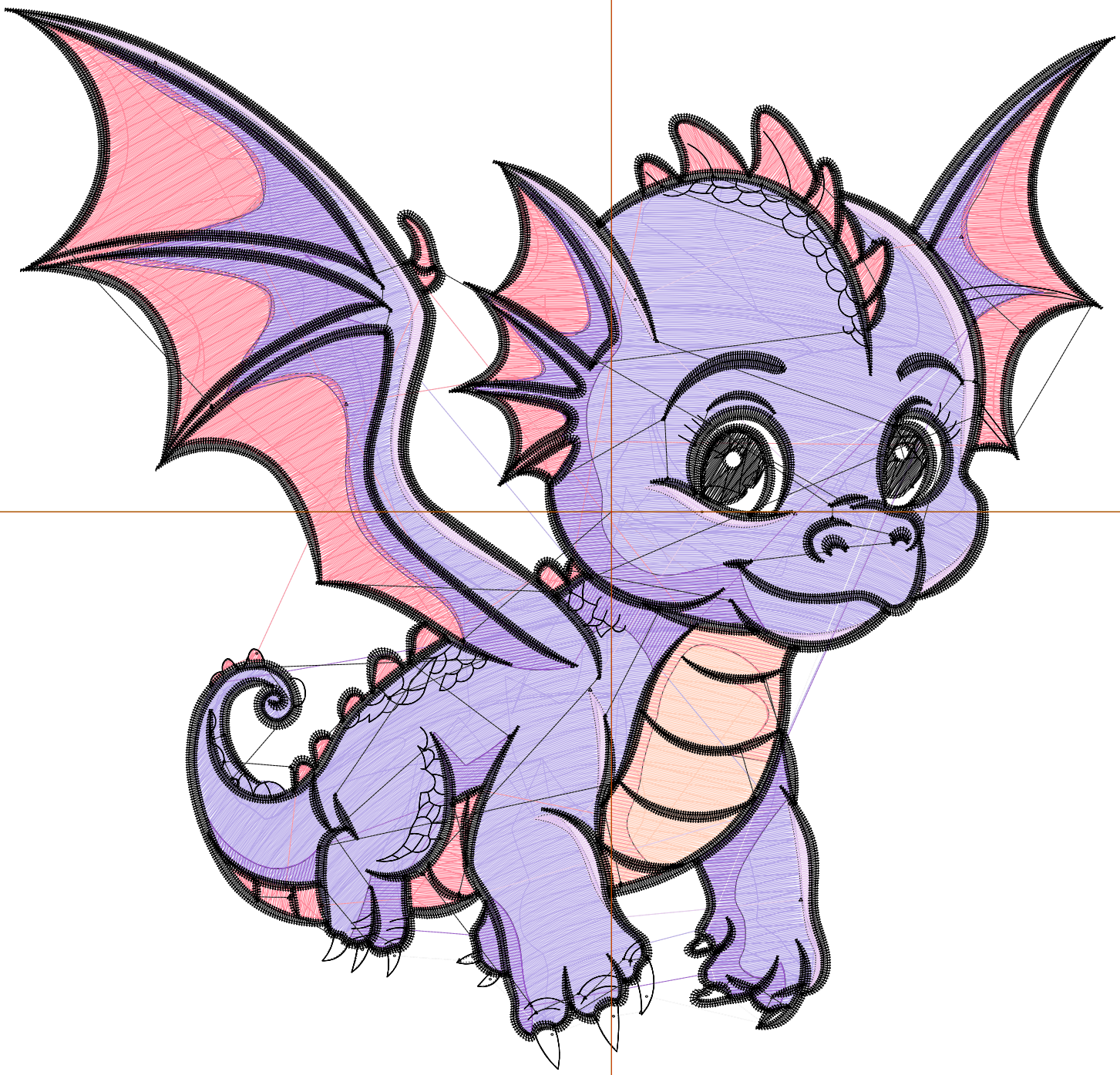
Wilcom EmbroideryStudio - Designing



Design: **7**

Title:

Stitches: 67,589
Height: 7.17 in
Width: 7.50 in
Colors: 7
Colorway: Colorway 1
Zoom: 1:1



Production Worksheet

Wilcom EmbroideryStudio - Designing



Design: **7**

Title:

Stitches: 67,589
 Height: 7.17 in
 Width: 7.50 in
 Colors: 7
 Colorway: Colorway 1
 Zoom: 1:1

Machine format: Tajima
 Color changes: 6
 Stops: 7
 Trims: 127
 Appliqués: 0
 Left: 104.1 mm
 Right: 86.4 mm
 Up: 86.5 mm
 Down: 95.7 mm
 EndX: 0.00 in
 EndY: 0.00 in
 Area 53.81 in²
 Max stitch: 7.0 mm
 Min stitch: 0.0 mm
 Max jump: 7.0 mm
 Total thread: 1047.17ft
 Total bobbin: 356.37ft

Stop Sequence:

#	N#	Color	St.	Code	Name	Chart
1.	4		1,677		R255 G207 B186	
2.	7		30,002		R180 G166 B232	
3.	9		1,187	9	White	Default
4.	5		2,335		R231 G201 B240	
5.	3		8,438		R255 G140 B157	
6.	2		3,155		R152 G88 B204	
7.	28		20,793	8	Black	Default