



Creative Fabrica

**Embroidery Design
Sewing Information**

www.creativefabrica.com/embroidery/

© Creative Fabrica

Production Worksheet

Wilcom EmbroideryStudio - Designing



Design: **3**

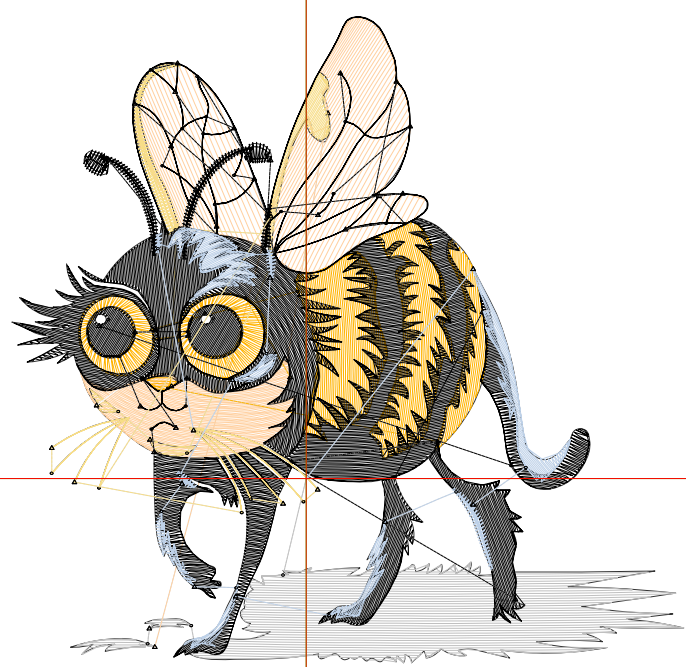
Title:

Stitches: 11,929
 Height: 3.37 in
 Width: 3.49 in
 Colors: 7
 Colorway: Colorway 1
 Zoom: 1:1

Machine format: Tajima
 Color changes: 7
 Stops: 8
 Trims: 59
 Appliqués: 0
 Left: 38.6 mm
 Right: 50.0 mm
 Up: 61.1 mm
 Down: 24.4 mm
 EndX: 0.00 in
 EndY: 0.00 in
 Area: 11.74 in²
 Max stitch: 10.5 mm
 Min stitch: 0.0 mm
 Max jump: 6.9 mm
 Total thread: 162.95ft
 Total bobbin: 48.62ft

Stop Sequence:

#	N#	Color	St.	Code	Name	Chart
1.	10		795	1002	Snow White	Madeira Classic 40
2.	1		1,067		R255 G208 B160	
3.	12		1,343	1024	Gold Rush	Madeira Classic 40
4.	4		413	1349	Palomino	Madeira Classic 40
5.	9		71	9	White	Default
6.	8		6,953	8	Black	Default
7.	4		257	1349	Palomino	Madeira Classic 40
8.	11		1,028	1198	Moonstone	Madeira Classic 40



Production Worksheet

Wilcom EmbroideryStudio - Designing



Design: **4**

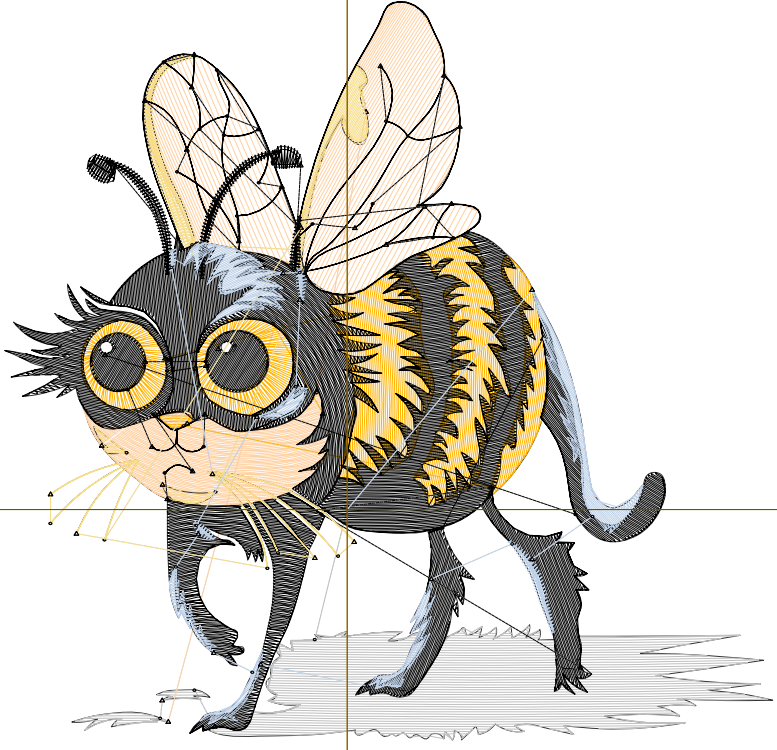
Title:

Stitches: 14,074
 Height: 3.85 in
 Width: 3.97 in
 Colors: 7
 Colorway: Colorway 1
 Zoom: 1:1

Machine format: Tajima
 Color changes: 7
 Stops: 8
 Trims: 60
 Appliqués: 0
 Left: 45.3 mm
 Right: 55.6 mm
 Up: 67.2 mm
 Down: 30.5 mm
 EndX: 0.00 in
 EndY: 0.00 in
 Area: 15.28 in²
 Max stitch: 11.9 mm
 Min stitch: 0.0 mm
 Max jump: 6.9 mm
 Total thread: 198.25ft
 Total bobbin: 61.20ft

Stop Sequence:

#	N#	Color	St.	Code	Name	Chart
1.	10		1,002	1002	Snow White	Madeira Classic 40
2.	1		1,338		R255 G208 B160	
3.	12		1,547	1024	Gold Rush	Madeira Classic 40
4.	4		476	1349	Palomino	Madeira Classic 40
5.	9		83	9	White	Default
6.	8		8,151	8	Black	Default
7.	4		290	1349	Palomino	Madeira Classic 40
8.	11		1,185	1198	Moonstone	Madeira Classic 40



Production Worksheet

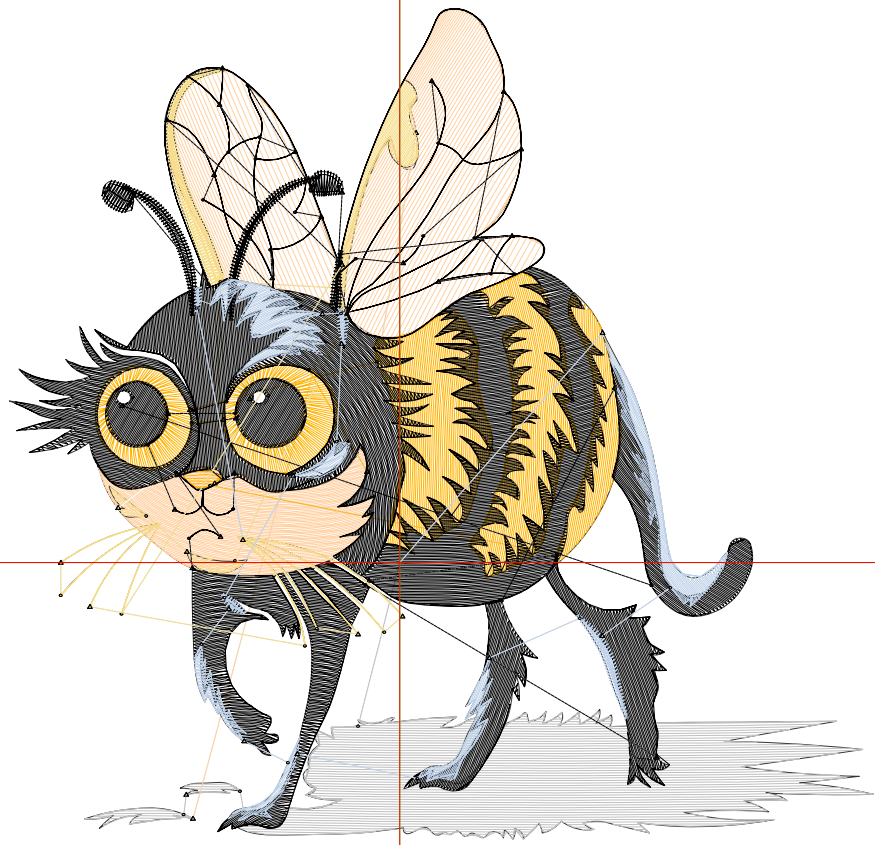
Wilcom EmbroideryStudio - Designing



Design: **4**

Title:

Stitches: 16,630
Height: 4.33 in
Width: 4.47 in
Colors: 7
Colorway: Colorway 1
Zoom: 1:1



1

1

2

2

Production Worksheet

Wilcom EmbroideryStudio - Designing



Design: **4**

Title:

Stitches: 16,630
 Height: 4.33 in
 Width: 4.47 in
 Colors: 7
 Colorway: Colorway 1
 Zoom: 1:1

Machine format: Tajima
 Color changes: 7
 Stops: 8
 Trims: 61
 Appliqués: 0
 Left: 50.9 mm
 Right: 62.7 mm
 Up: 73.2 mm
 Down: 36.6 mm
 EndX: 0.00 in
 EndY: 0.00 in
 Area 19.34 in²
 Max stitch: 7.0 mm
 Min stitch: 0.0 mm
 Max jump: 7.0 mm
 Total thread: 240.27ft
 Total bobbin: 76.17ft

Stop Sequence:

#	N#	Color	St.	Code	Name	Chart
1.	10		1,218	1002	Snow White	Madeira Classic 40
2.	1		1,643		R255 G208 B160	
3.	12		1,922	1024	Gold Rush	Madeira Classic 40
4.	4		537	1349	Palomino	Madeira Classic 40
5.	9		89	9	White	Default
6.	8		9,523	8	Black	Default
7.	4		313	1349	Palomino	Madeira Classic 40
8.	11		1,383	1198	Moonstone	Madeira Classic 40

Production Worksheet

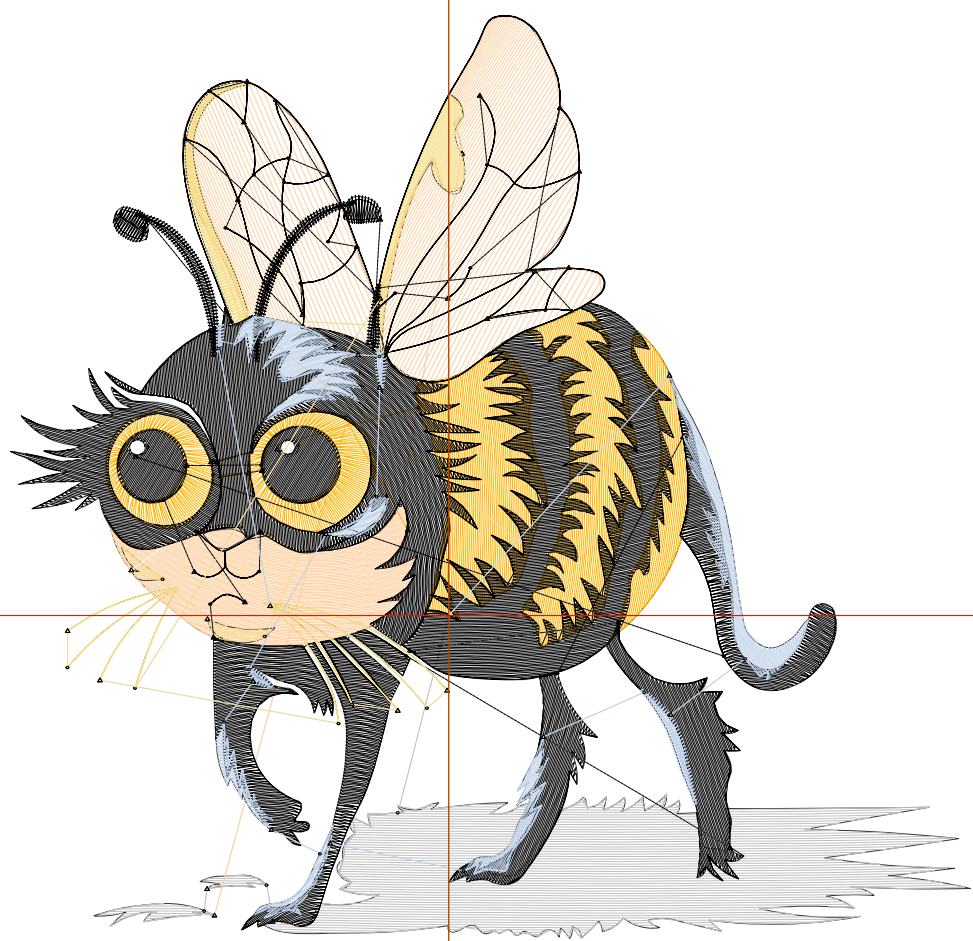
Wilcom EmbroideryStudio - Designing



Design: **5**

Title:

Stitches: 19,203
Height: 4.81 in
Width: 4.97 in
Colors: 7
Colorway: Colorway 1
Zoom: 1:1



Production Worksheet

Wilcom EmbroideryStudio - Designing



Design: **5**

Title:

Stitches: 19,203
 Height: 4.81 in
 Width: 4.97 in
 Colors: 7
 Colorway: Colorway 1
 Zoom: 1:1

Machine format: Tajima
 Color changes: 7
 Stops: 8
 Trims: 60
 Appliqués: 0
 Left: 58.0 mm
 Right: 68.3 mm
 Up: 79.3 mm
 Down: 42.7 mm
 EndX: 0.00 in
 EndY: 0.00 in
 Area 23.88 in²
 Max stitch: 6.9 mm
 Min stitch: 0.0 mm
 Max jump: 6.9 mm
 Total thread: 282.79ft
 Total bobbin: 91.35ft

Stop Sequence:

#	N#	Color	St.	Code	Name	Chart
1.	10		1,404	1002	Snow White	Madeira Classic 40
2.	1		1,951		R255 G208 B160	
3.	12		2,170	1024	Gold Rush	Madeira Classic 40
4.	4		610	1349	Palomino	Madeira Classic 40
5.	9		98	9	White	Default
6.	8		11,116	8	Black	Default
7.	4		341	1349	Palomino	Madeira Classic 40
8.	11		1,511	1198	Moonstone	Madeira Classic 40

Production Worksheet

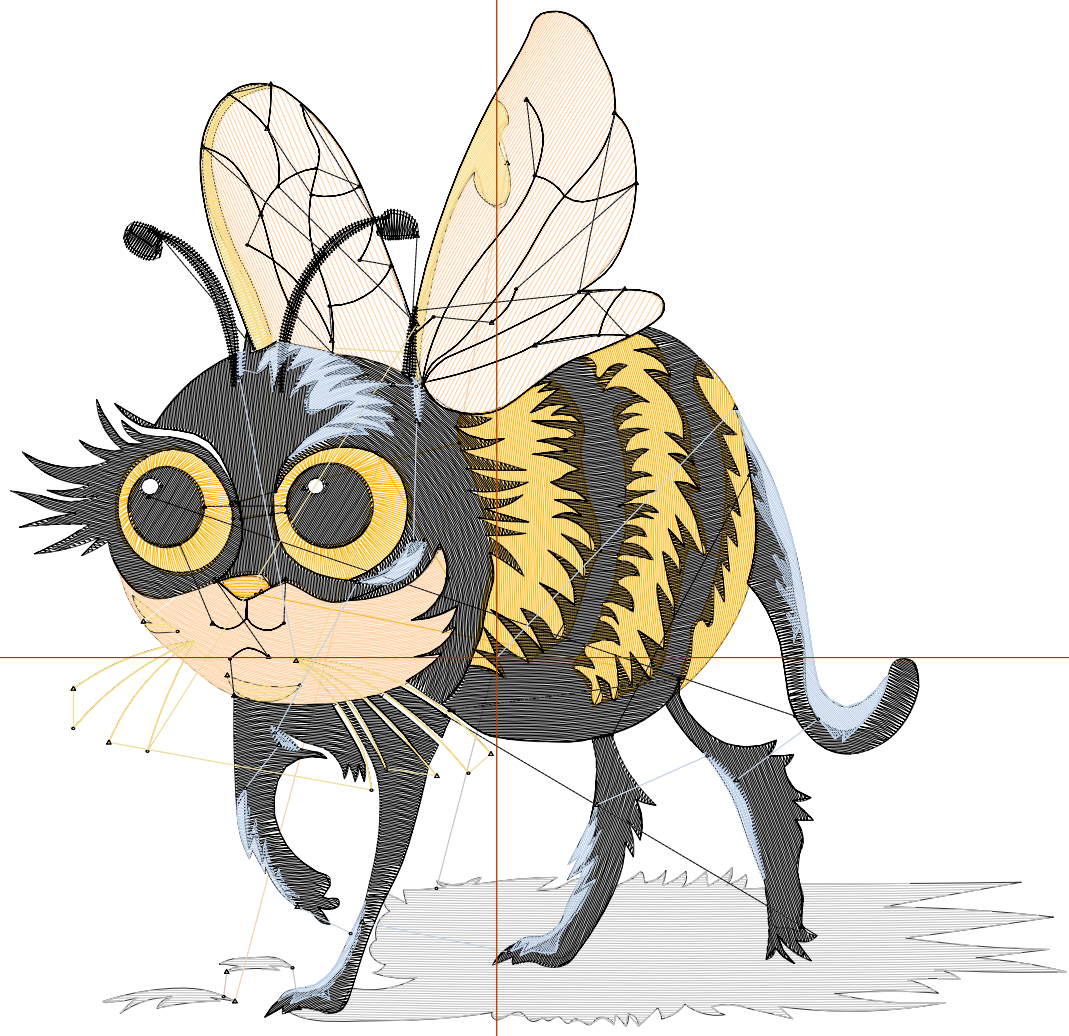
Wilcom EmbroideryStudio - Designing



Design: **5**

Title:

Stitches: 21,960
Height: 5.29 in
Width: 5.48 in
Colors: 7
Colorway: Colorway 1
Zoom: 1:1



Production Worksheet

Wilcom EmbroideryStudio - Designing



Design: **5**

Title:

Stitches: 21,960
 Height: 5.29 in
 Width: 5.48 in
 Colors: 7
 Colorway: Colorway 1
 Zoom: 1:1

Machine format: Tajima
 Color changes: 7
 Stops: 8
 Trims: 61
 Appliqués: 0
 Left: 63.8 mm
 Right: 75.4 mm
 Up: 85.4 mm
 Down: 48.8 mm
 EndX: 0.00 in
 EndY: 0.00 in
 Area 28.97 in²
 Max stitch: 7.0 mm
 Min stitch: 0.0 mm
 Max jump: 7.0 mm
 Total thread: 330.10ft
 Total bobbin: 108.67ft

Stop Sequence:

#	N#	Color	St.	Code	Name	Chart
1.	10		1,622	1002	Snow White	Madeira Classic 40
2.	1		2,319		R255 G208 B160	
3.	12		2,610	1024	Gold Rush	Madeira Classic 40
4.	4		689	1349	Palomino	Madeira Classic 40
5.	9		108	9	White	Default
6.	8		12,555	8	Black	Default
7.	4		363	1349	Palomino	Madeira Classic 40
8.	11		1,692	1198	Moonstone	Madeira Classic 40

Production Worksheet

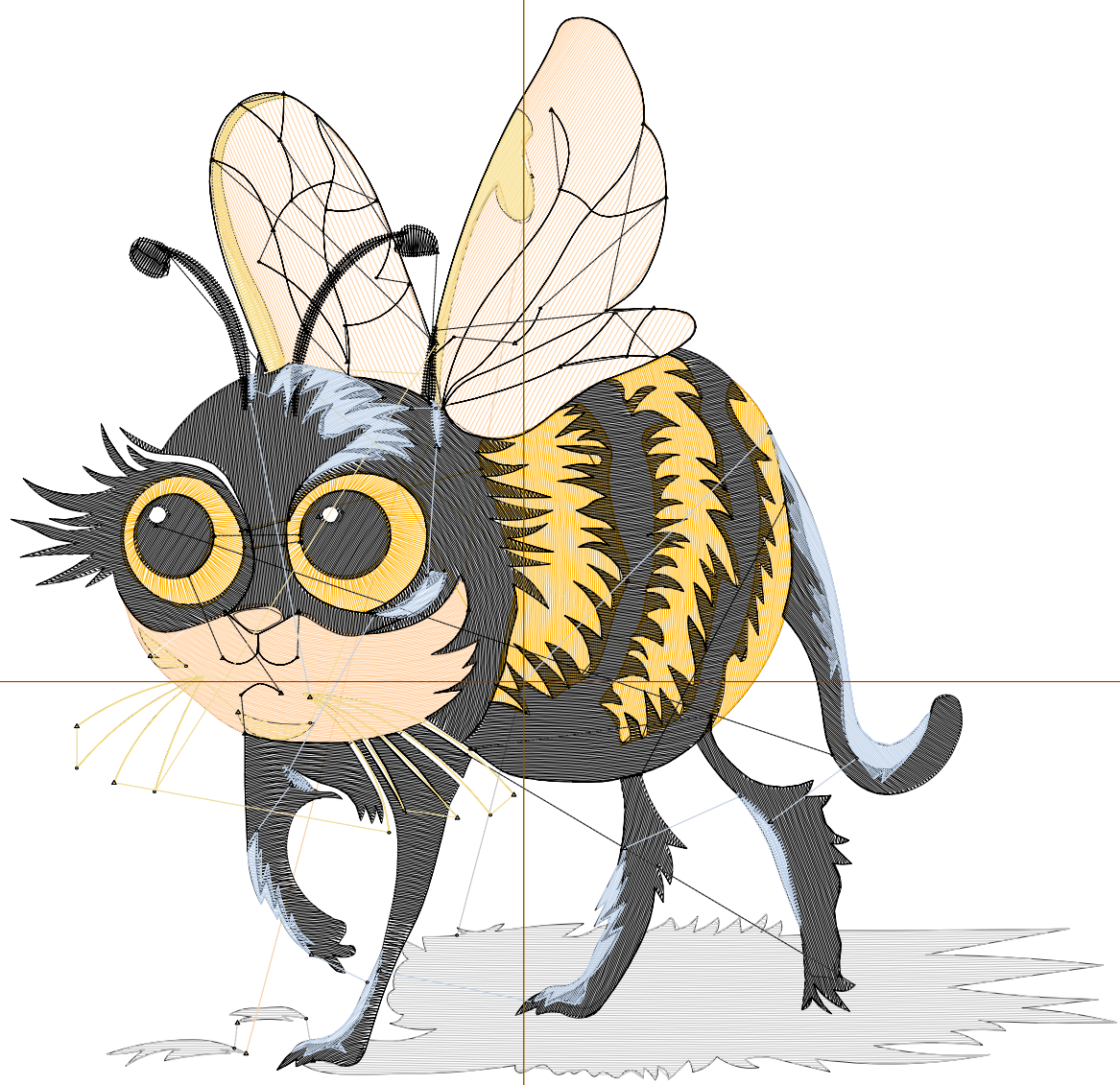
Wilcom EmbroideryStudio - Designing



Design: **6**

Title:

Stitches: 24,672
Height: 5.77 in
Width: 6.00 in
Colors: 7
Colorway: Colorway 1
Zoom: 1:1



Production Worksheet

Wilcom EmbroideryStudio - Designing



Design: **6**

Title:

Stitches: 24,672
 Height: 5.77 in
 Width: 6.00 in
 Colors: 7
 Colorway: Colorway 1
 Zoom: 1:1

Machine format: Tajima
 Color changes: 7
 Stops: 8
 Trims: 60
 Appliqués: 0
 Left: 70.7 mm
 Right: 81.7 mm
 Up: 91.6 mm
 Down: 54.9 mm
 EndX: 0.00 in
 EndY: 0.00 in
 Area 34.59 in²
 Max stitch: 7.0 mm
 Min stitch: 0.0 mm
 Max jump: 7.0 mm
 Total thread: 379.91ft
 Total bobbin: 127.64ft

Stop Sequence:

#	N#	Color	St.	Code	Name	Chart
1.	10		1,876	1002	Snow White	Madeira Classic 40
2.	1		2,682		R255 G208 B160	
3.	12		2,934	1024	Gold Rush	Madeira Classic 40
4.	4		757	1349	Palomino	Madeira Classic 40
5.	9		119	9	White	Default
6.	8		14,018	8	Black	Default
7.	4		391	1349	Palomino	Madeira Classic 40
8.	11		1,893	1198	Moonstone	Madeira Classic 40

Production Worksheet

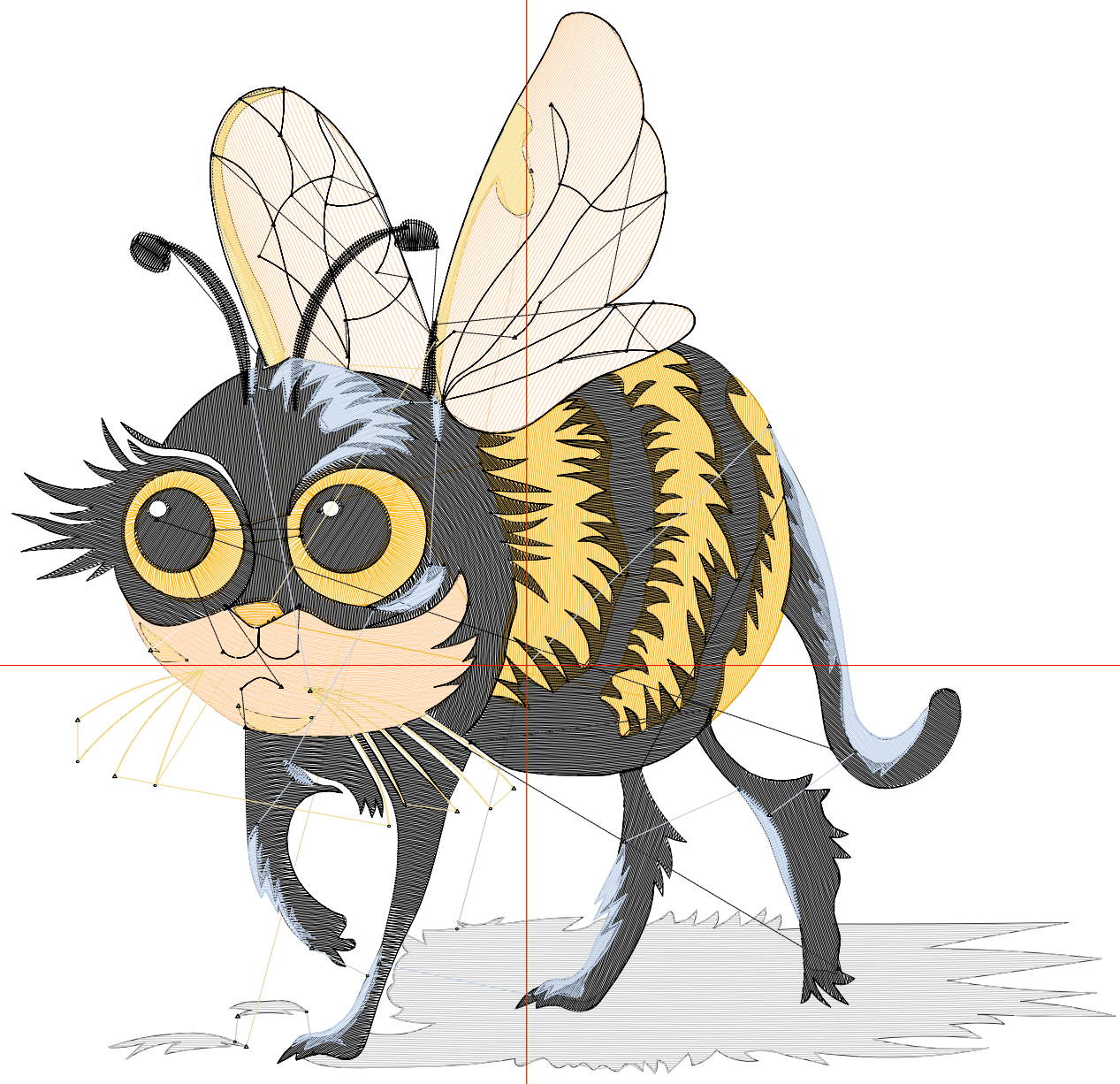
Wilcom EmbroideryStudio - Designing



Design: **6**

Title:

Stitches: 27,845
Height: 6.25 in
Width: 6.48 in
Colors: 7
Colorway: Colorway 1
Zoom: 1:1



Production Worksheet

Wilcom EmbroideryStudio - Designing



Design: **6**

Title:

Stitches: 27,845
 Height: 6.25 in
 Width: 6.48 in
 Colors: 7
 Colorway: Colorway 1
 Zoom: 1:1

Machine format: Tajima
 Color changes: 7
 Stops: 8
 Trims: 63
 Appliqués: 0
 Left: 76.8 mm
 Right: 87.9 mm
 Up: 97.7 mm
 Down: 61.0 mm
 EndX: 0.00 in
 EndY: 0.00 in
 Area 40.52 in²
 Max stitch: 7.0 mm
 Min stitch: 0.0 mm
 Max jump: 7.0 mm
 Total thread: 435.10ft
 Total bobbin: 148.01ft

Stop Sequence:

#	N#	Color	St.	Code	Name	Chart
1.	10		2,155	1002	Snow White	Madeira Classic 40
2.	1		3,089		R255 G208 B160	
3.	12		3,349	1024	Gold Rush	Madeira Classic 40
4.	4		826	1349	Palomino	Madeira Classic 40
5.	9		129	9	White	Default
6.	8		15,727	8	Black	Default
7.	4		422	1349	Palomino	Madeira Classic 40
8.	11		2,146	1198	Moonstone	Madeira Classic 40

Production Worksheet

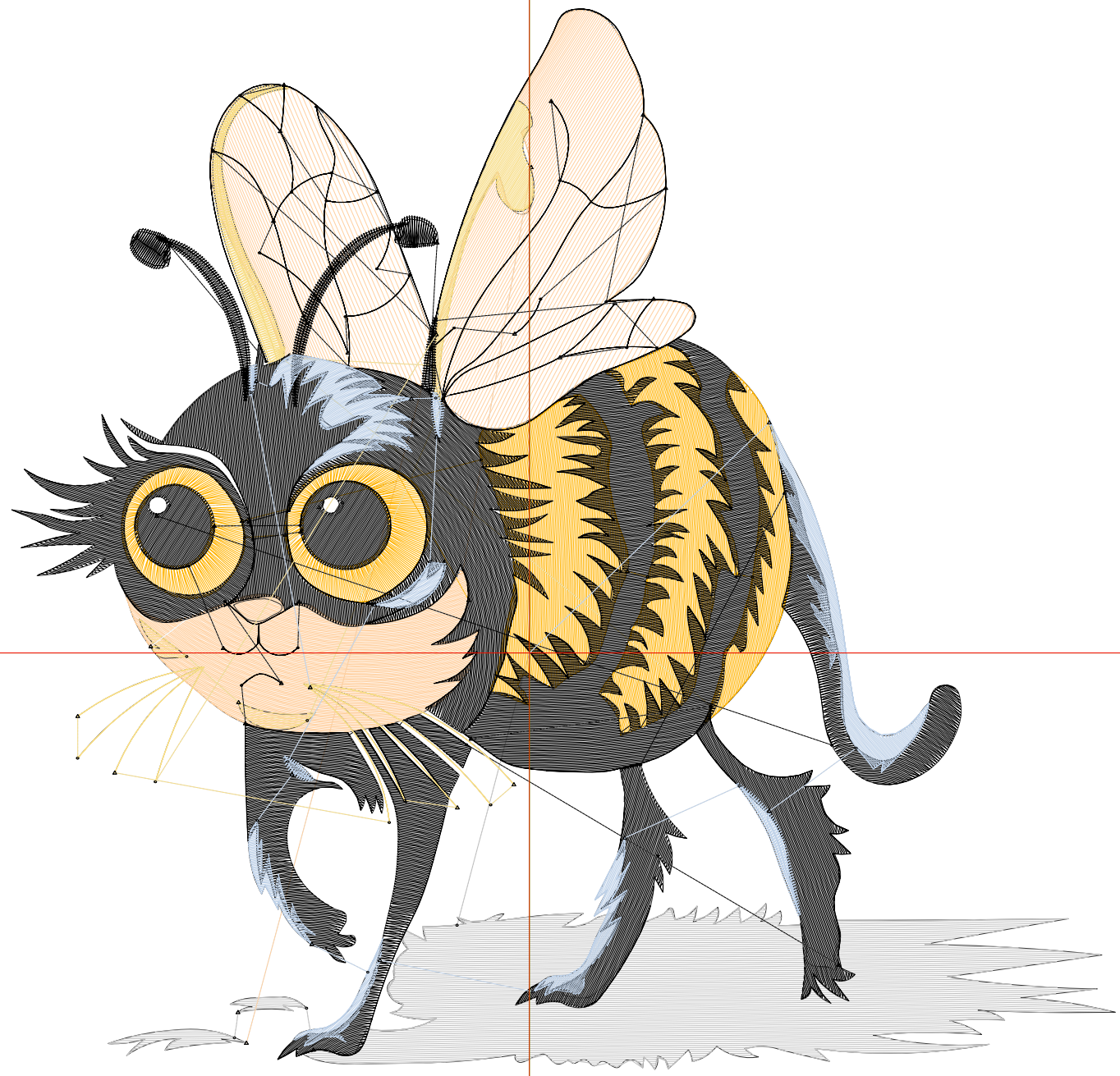
Wilcom EmbroideryStudio - Designing



Design: **7**

Title:

Stitches: 31,297
Height: 6.73 in
Width: 6.96 in
Colors: 7
Colorway: Colorway 1
Zoom: 1:1



Production Worksheet

Wilcom EmbroideryStudio - Designing



Design: **7**

Title:

Stitches: 31,297
 Height: 6.73 in
 Width: 6.96 in
 Colors: 7
 Colorway: Colorway 1
 Zoom: 1:1

Machine format: Tajima
 Color changes: 7
 Stops: 8
 Trims: 62
 Appliqués: 0
 Left: 83.4 mm
 Right: 93.5 mm
 Up: 103.8 mm
 Down: 67.2 mm
 EndX: 0.00 in
 EndY: 0.00 in
 Area 46.86 in²
 Max stitch: 7.0 mm
 Min stitch: 0.0 mm
 Max jump: 7.0 mm
 Total thread: 493.75ft
 Total bobbin: 169.34ft

Stop Sequence:

#	N#	Color	St.	Code	Name	Chart
1.	10		2,486	1002	Snow White	Madeira Classic 40
2.	1		3,517		R255 G208 B160	
3.	12		3,721	1024	Gold Rush	Madeira Classic 40
4.	4		922	1349	Palomino	Madeira Classic 40
5.	9		135	9	White	Default
6.	8		17,710	8	Black	Default
7.	4		457	1349	Palomino	Madeira Classic 40
8.	11		2,347	1198	Moonstone	Madeira Classic 40

Production Worksheet

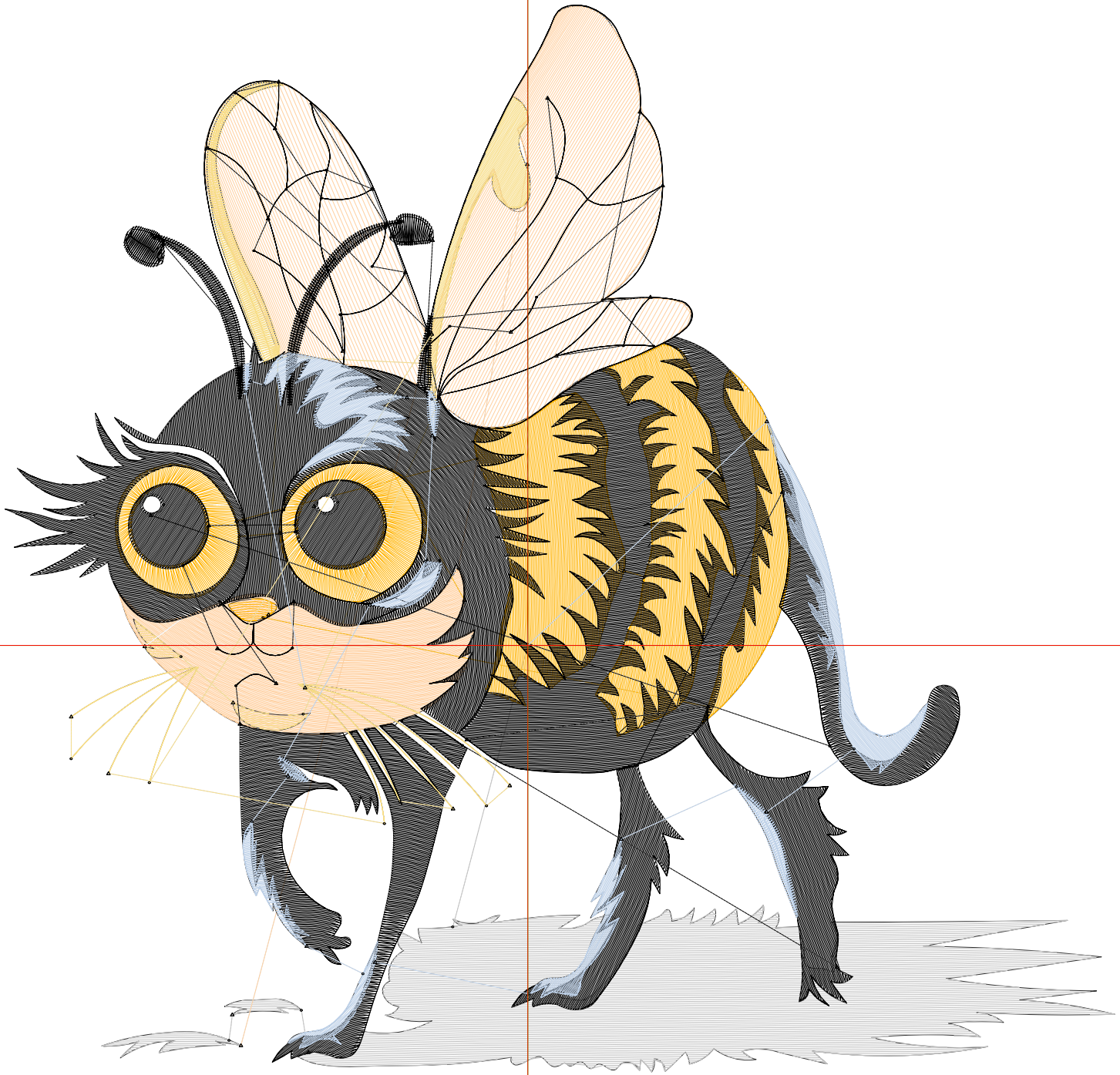
Wilcom EmbroideryStudio - Designing



Design: 7

Title:

Stitches: 34,791
Height: 7.21 in
Width: 7.50 in
Colors: 7
Colorway: Colorway 1
Zoom: 1:1



Production Worksheet

Wilcom EmbroideryStudio - Designing



Design: **7**

Title:

Stitches: 34,791
 Height: 7.21 in
 Width: 7.50 in
 Colors: 7
 Colorway: Colorway 1
 Zoom: 1:1

Machine format: Tajima
 Color changes: 7
 Stops: 8
 Trims: 63
 Appliqués: 0
 Left: 89.7 mm
 Right: 100.8 mm
 Up: 109.9 mm
 Down: 73.3 mm
 EndX: 0.00 in
 EndY: 0.00 in
 Area 54.08 in²
 Max stitch: 6.9 mm
 Min stitch: 0.0 mm
 Max jump: 6.9 mm
 Total thread: 555.80ft
 Total bobbin: 192.52ft

Stop Sequence:

#	N#	Color	St.	Code	Name	Chart
1.	10		2,700	1002	Snow White	Madeira Classic 40
2.	1		3,962		R255 G208 B160	
3.	12		4,282	1024	Gold Rush	Madeira Classic 40
4.	4		987	1349	Palomino	Madeira Classic 40
5.	9		139	9	White	Default
6.	8		19,711	8	Black	Default
7.	4		476	1349	Palomino	Madeira Classic 40
8.	11		2,532	1198	Moonstone	Madeira Classic 40