



Creative Fabrica

**Embroidery Design
Sewing Information**

www.creativefabrica.com/embroidery/

© Creative Fabrica

Production Worksheet

Wilcom EmbroideryStudio - Designing



Design: **3**

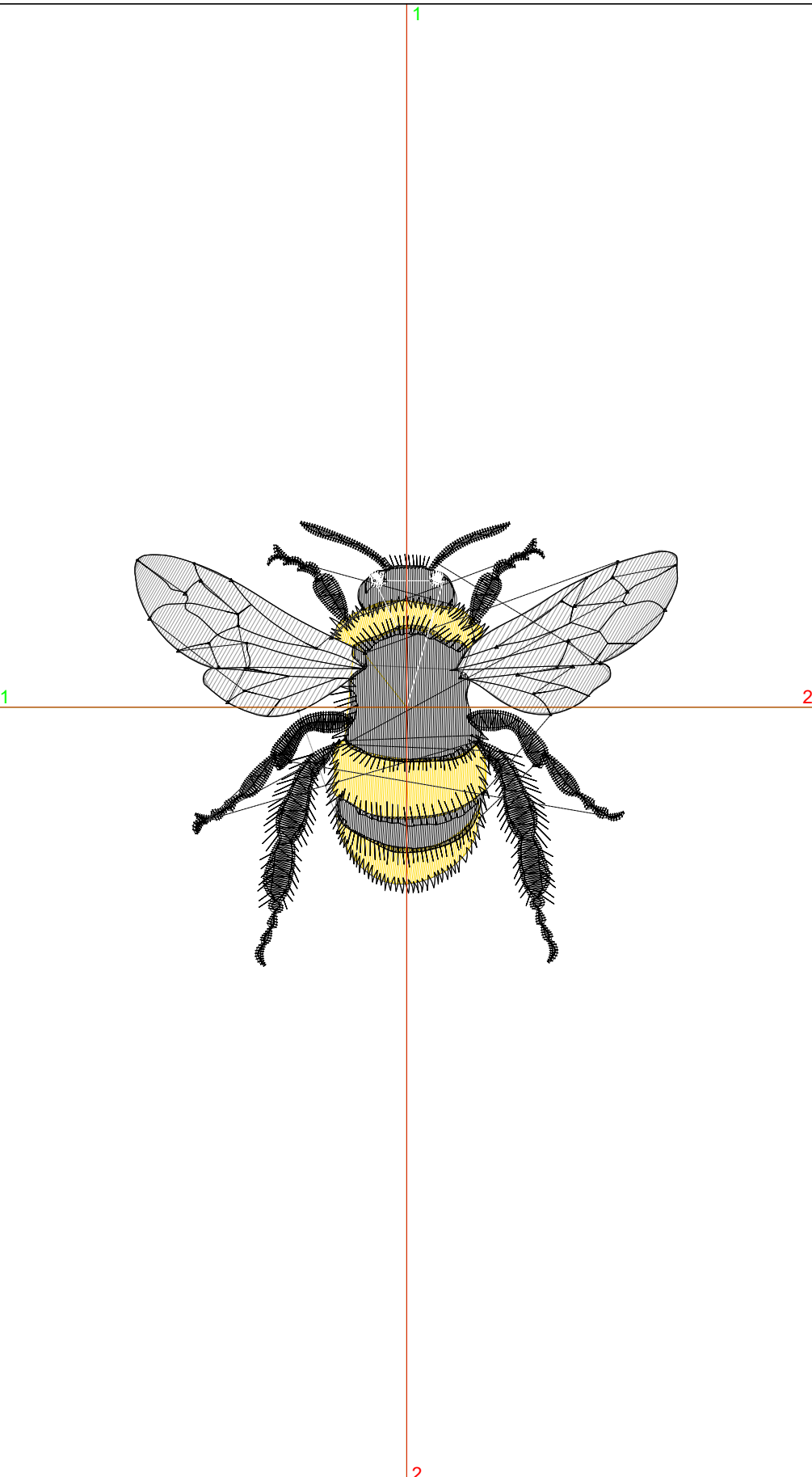
Title:

Stitches: 6,743
 Height: 2.87 in
 Width: 3.50 in
 Colors: 4
 Colorway: Colorway 1
 Zoom: 1:1

Machine format: Tajima
 Color changes: 3
 Stops: 4
 Trims: 41
 Appliqués: 0
 Left: 44.5 mm
 Right: 44.4 mm
 Up: 30.5 mm
 Down: 42.4 mm
 EndX: 0.00 in
 EndY: 0.00 in
 Area: 10.04 in²
 Max stitch: 7.7 mm
 Min stitch: 0.0 mm
 Max jump: 7.0 mm
 Total thread: 103.11ft
 Total bobbin: 34.10ft

Stop Sequence:

#	N#	Color	St.	Code	Name	Chart
1.	4		883		R255 G217 B1	
2.	18		833		R153 G153 B153	
3.	8		4,948		R0 G0 B0	
4.	9		77	9	White	Default



Production Worksheet

Wilcom EmbroideryStudio - Designing



Design: **4**

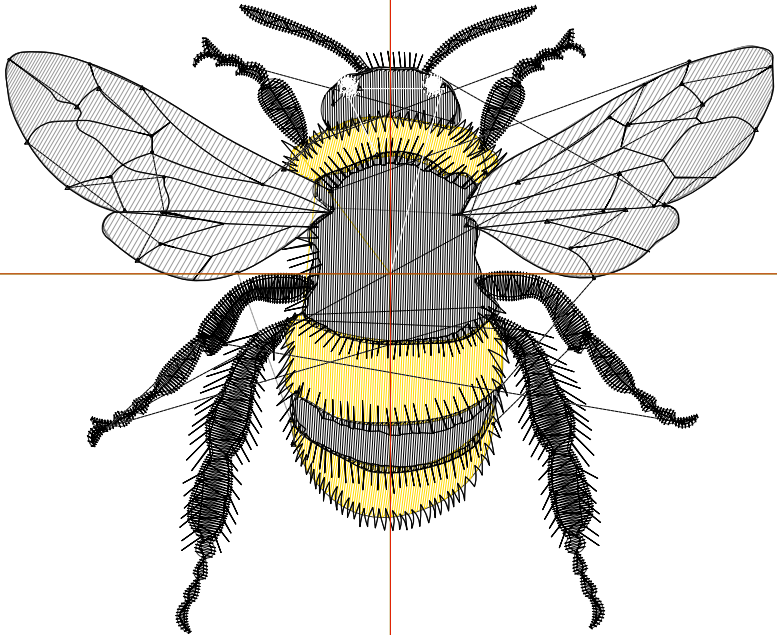
Title:

Stitches: 7,784
 Height: 3.28 in
 Width: 4.00 in
 Colors: 4
 Colorway: Colorway 1
 Zoom: 1:1

Machine format: Tajima
 Color changes: 3
 Stops: 4
 Trims: 41
 Appliqués: 0
 Left: 50.8 mm
 Right: 50.7 mm
 Up: 35.7 mm
 Down: 47.6 mm
 EndX: 0.00 in
 EndY: 0.00 in
 Area: 13.11 in²
 Max stitch: 8.8 mm
 Min stitch: 0.0 mm
 Max jump: 7.0 mm
 Total thread: 124.66ft
 Total bobbin: 42.83ft

Stop Sequence:

#	N#	Color	St.	Code	Name	Chart
1.	4		1,059	R255	G217 B1	
2.	18		1,019	R153	G153 B153	
3.	8		5,618	R0	G0 B0	
4.	9		86	9	White	Default



Production Worksheet

Wilcom EmbroideryStudio - Designing



Design: **4**

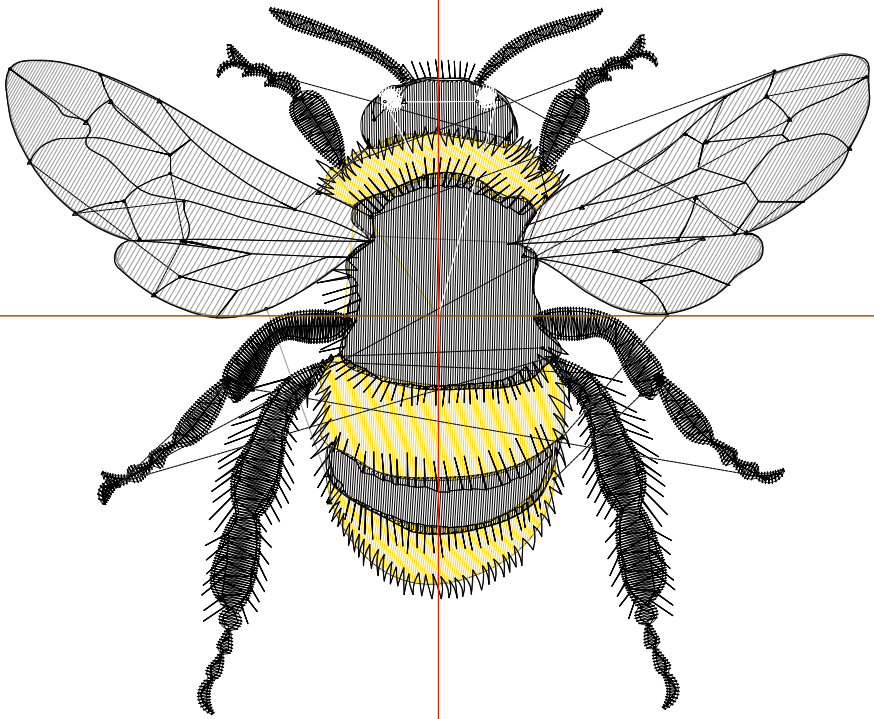
Title:

Stitches: 8,908
 Height: 3.69 in
 Width: 4.50 in
 Colors: 4
 Colorway: Colorway 1
 Zoom: 1:1

Machine format: Tajima
 Color changes: 3
 Stops: 4
 Trims: 41
 Appliqués: 0
 Left: 57.2 mm
 Right: 57.1 mm
 Up: 40.9 mm
 Down: 52.8 mm
 EndX: 0.00 in
 EndY: 0.00 in
 Area: 16.59 in²
 Max stitch: 9.9 mm
 Min stitch: 0.0 mm
 Max jump: 7.0 mm
 Total thread: 148.56ft
 Total bobbin: 52.62ft

Stop Sequence:

#	N#	Color	St.	Code	Name	Chart
1.	4		1,256	R255	G217 B1	
2.	18		1,233	R153	G153 B153	
3.	8		6,324	R0	G0 B0	
4.	9		93	9	White	Default



Production Worksheet

Wilcom EmbroideryStudio - Designing



Design: **5**

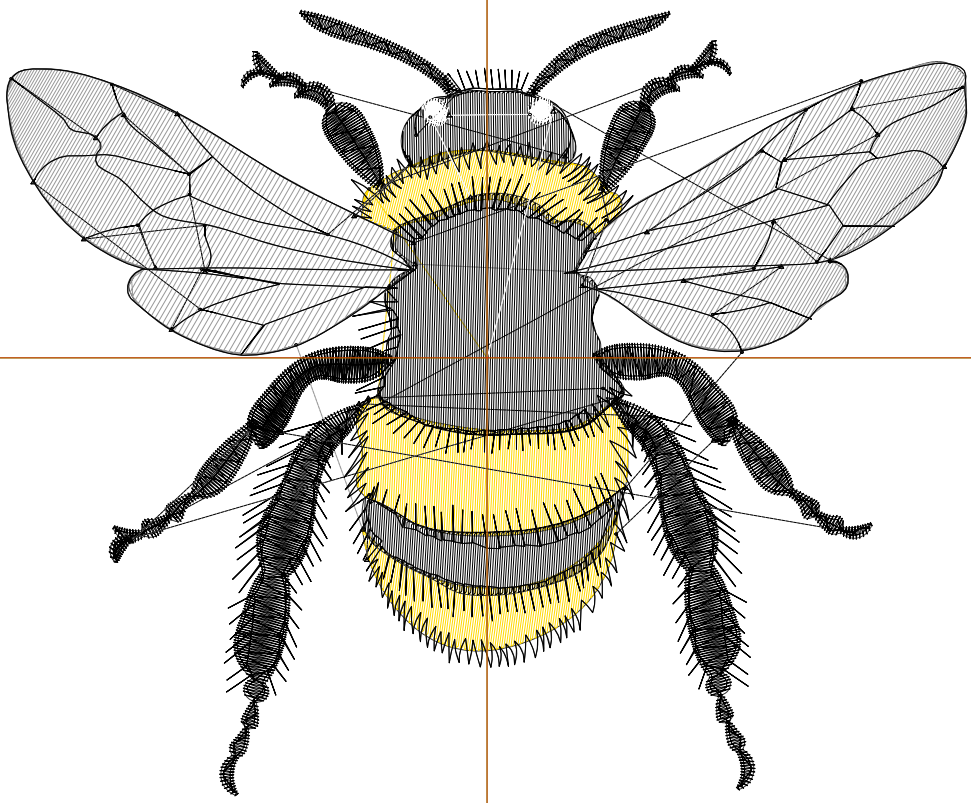
Title:

Stitches: 10,091
 Height: 4.09 in
 Width: 5.00 in
 Colors: 4
 Colorway: Colorway 1
 Zoom: 1:1

Machine format: Tajima
 Color changes: 3
 Stops: 4
 Trims: 42
 Appliqués: 0
 Left: 63.5 mm
 Right: 63.4 mm
 Up: 46.0 mm
 Down: 58.0 mm
 EndX: 0.00 in
 EndY: 0.00 in
 Area: 20.47 in²
 Max stitch: 10.6 mm
 Min stitch: 0.0 mm
 Max jump: 6.9 mm
 Total thread: 174.42ft
 Total bobbin: 63.35ft

Stop Sequence:

#	N#	Color	St.	Code	Name	Chart
1.	4		1,502	R255	G217 B1	
2.	18		1,476	R153	G153 B153	
3.	8		7,012	R0	G0 B0	
4.	9		99	9	White	Default



Production Worksheet

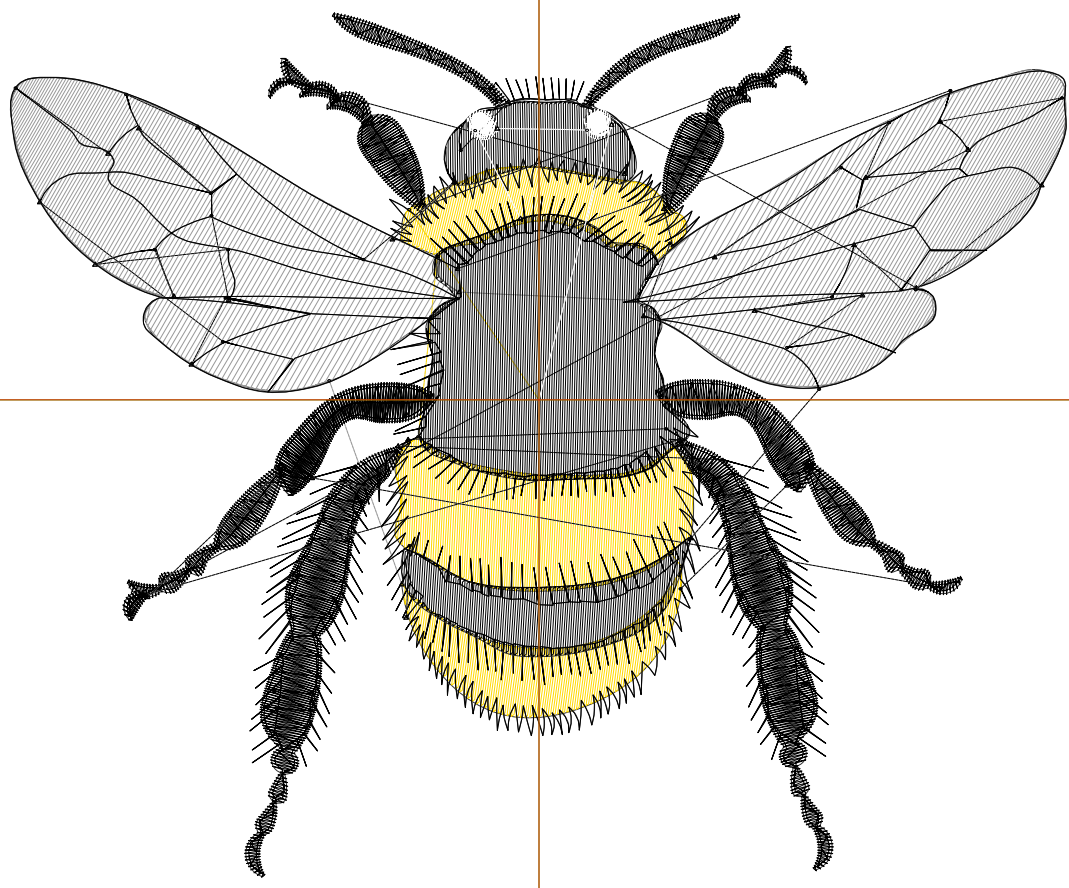
Wilcom EmbroideryStudio - Designing



Design: **5**

Title:

Stitches: 11,326
Height: 4.50 in
Width: 5.50 in
Colors: 4
Colorway: Colorway 1
Zoom: 1:1



Production Worksheet

Wilcom EmbroideryStudio - Designing



Design: **5**

Title:

Stitches: 11,326
 Height: 4.50 in
 Width: 5.50 in
 Colors: 4
 Colorway: Colorway 1
 Zoom: 1:1

Machine format: Tajima
 Color changes: 3
 Stops: 4
 Trims: 42
 Appliqués: 0
 Left: 69.9 mm
 Right: 69.7 mm
 Up: 51.2 mm
 Down: 63.2 mm
 EndX: 0.00 in
 EndY: 0.00 in
 Area 24.76 in²
 Max stitch: 11.7 mm
 Min stitch: 0.0 mm
 Max jump: 6.9 mm
 Total thread: 202.90ft
 Total bobbin: 75.42ft

Stop Sequence:

#	N#	Color	St.	Code	Name	Chart
1.	4		1,721		R255 G217 B1	
2.	18		1,729		R153 G153 B153	
3.	8		7,767		R0 G0 B0	
4.	9		107	9	White	Default

Production Worksheet

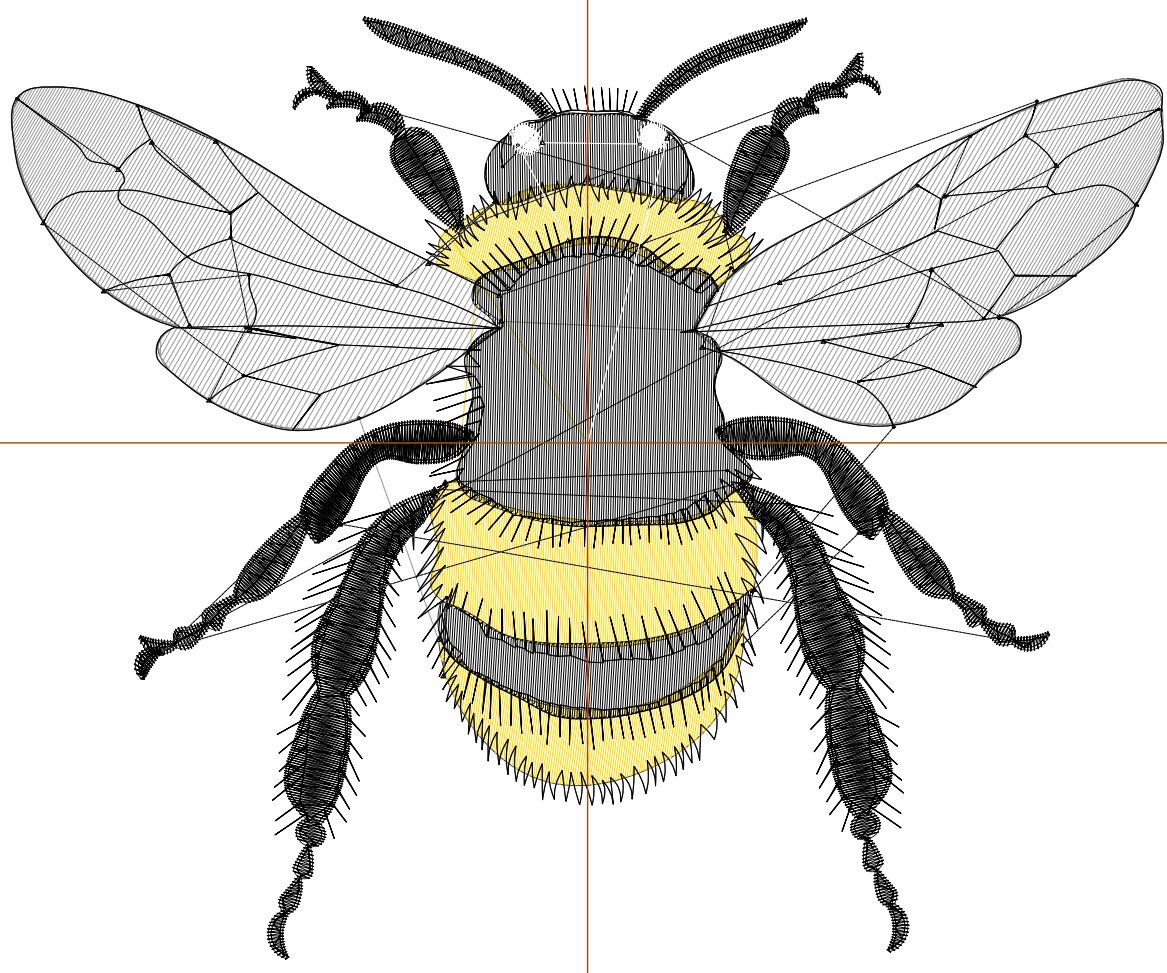
Wilcom EmbroideryStudio - Designing



Design: **6**

Title:

Stitches: 12,612
Height: 4.91 in
Width: 6.00 in
Colors: 4
Colorway: Colorway 1
Zoom: 1:1



Production Worksheet

Wilcom EmbroideryStudio - Designing



Design: **6**

Title:

Stitches: 12,612
 Height: 4.91 in
 Width: 6.00 in
 Colors: 4
 Colorway: Colorway 1
 Zoom: 1:1

Machine format: Tajima
 Color changes: 3
 Stops: 4
 Trims: 42
 Appliqués: 0
 Left: 76.2 mm
 Right: 76.1 mm
 Up: 56.4 mm
 Down: 68.3 mm
 EndX: 0.00 in
 EndY: 0.00 in
 Area 29.46 in²
 Max stitch: 8.1 mm
 Min stitch: 0.0 mm
 Max jump: 7.0 mm
 Total thread: 233.25ft
 Total bobbin: 88.41ft

Stop Sequence:

#	N#	Color	St.	Code	Name	Chart
1.	4		1,959		R255 G217 B1	
2.	18		2,008		R153 G153 B153	
3.	8		8,527		R0 G0 B0	
4.	9		116	9	White	Default

Production Worksheet

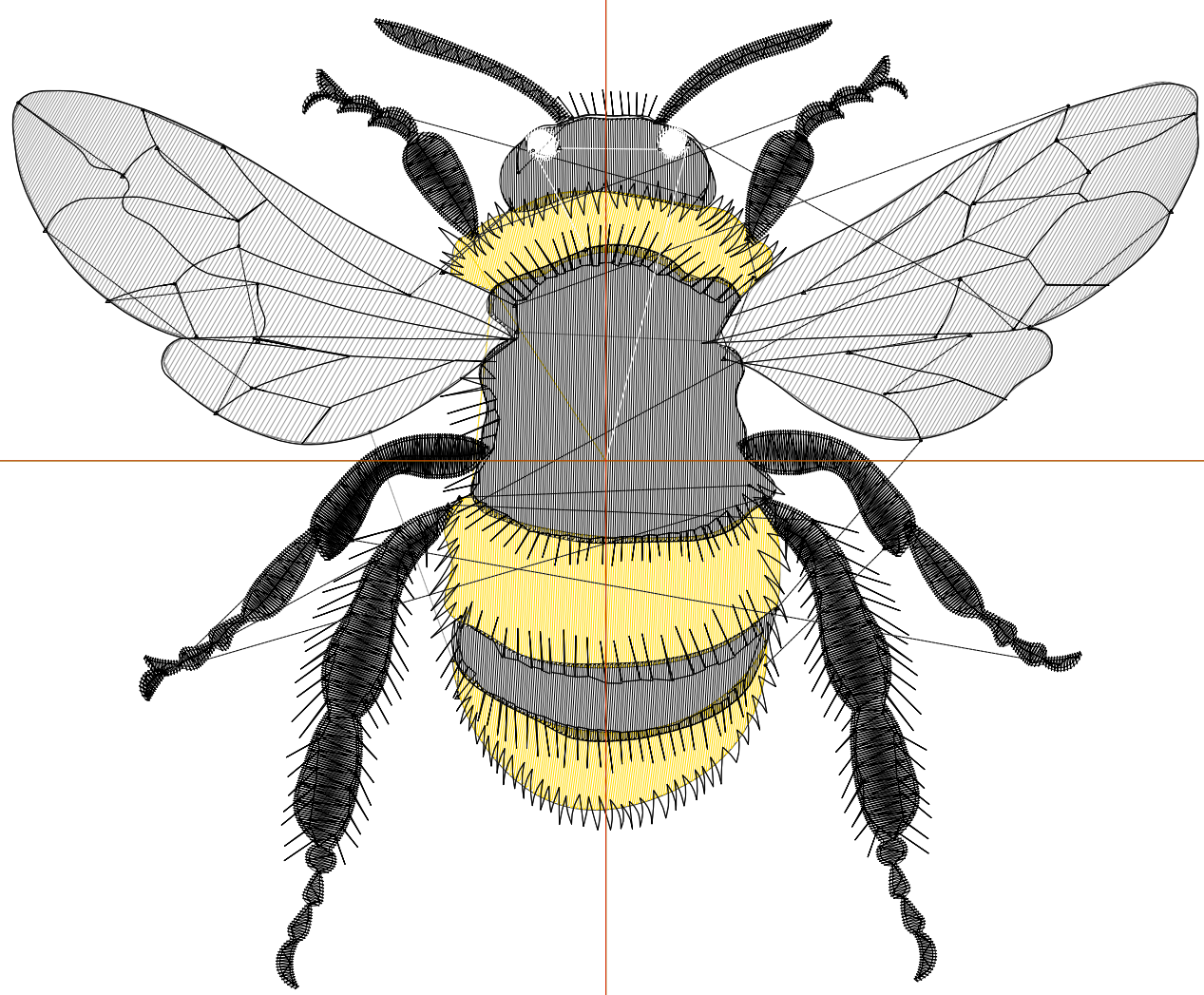
Wilcom EmbroideryStudio - Designing



Design: **6**

Title:

Stitches: 14,005
Height: 5.32 in
Width: 6.50 in
Colors: 4
Colorway: Colorway 1
Zoom: 1:1



Production Worksheet

Wilcom EmbroideryStudio - Designing



Design: **6**

Title:

Stitches: 14,005
 Height: 5.32 in
 Width: 6.50 in
 Colors: 4
 Colorway: Colorway 1
 Zoom: 1:1

Machine format: Tajima
 Color changes: 3
 Stops: 4
 Trims: 42
 Appliqués: 0
 Left: 82.6 mm
 Right: 82.4 mm
 Up: 61.6 mm
 Down: 73.5 mm
 EndX: 0.00 in
 EndY: 0.00 in
 Area 34.57 in²
 Max stitch: 8.7 mm
 Min stitch: 0.0 mm
 Max jump: 7.0 mm
 Total thread: 266.11ft
 Total bobbin: 102.46ft

Stop Sequence:

#	N#	Color	St.	Code	Name	Chart
1.	4		2,233		R255 G217 B1	
2.	18		2,289		R153 G153 B153	
3.	8		9,356		R0 G0 B0	
4.	9		125	9	White	Default

Production Worksheet

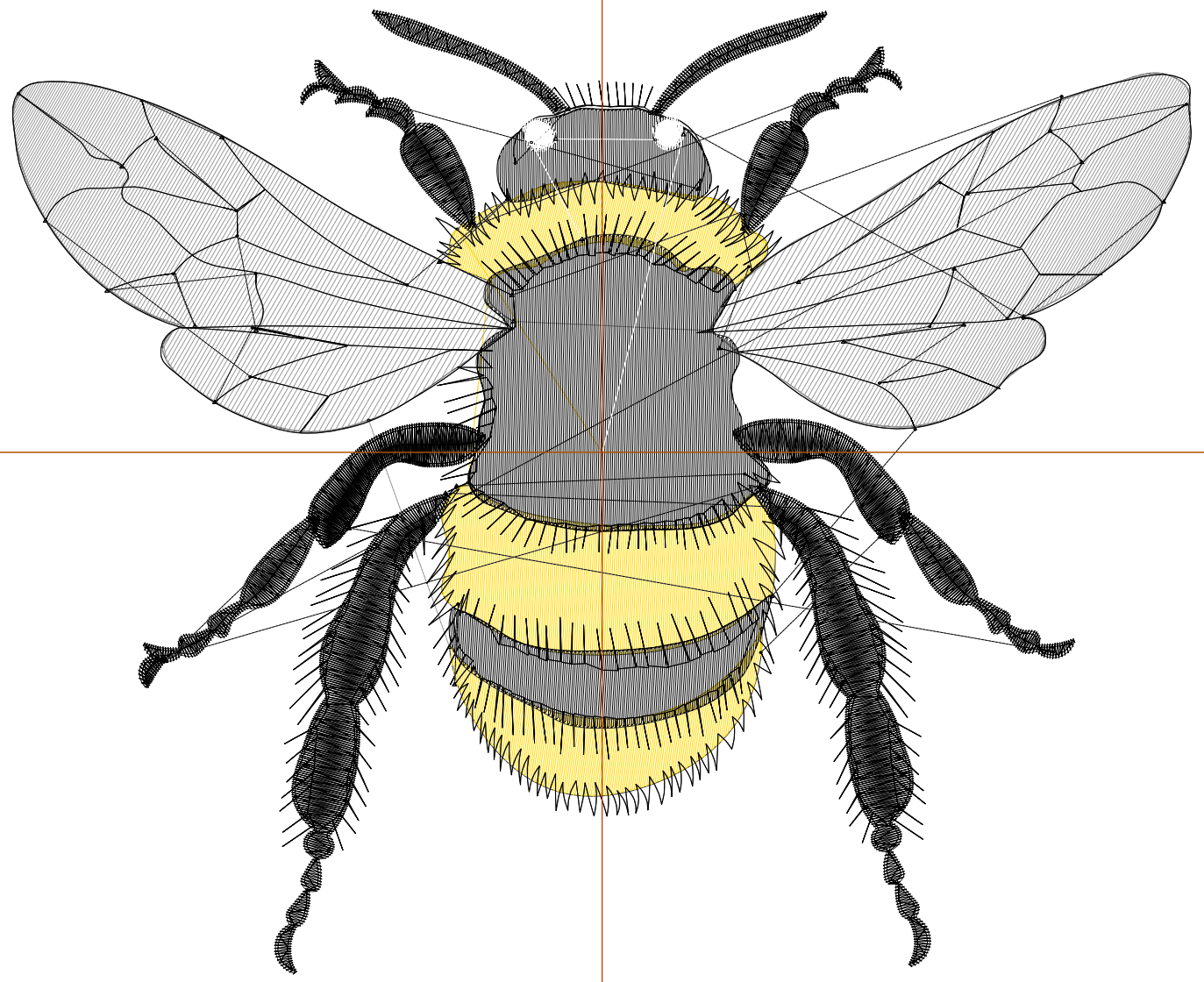
Wilcom EmbroideryStudio - Designing



Design: **7**

Title:

Stitches: 15,442
Height: 5.73 in
Width: 7.00 in
Colors: 4
Colorway: Colorway 1
Zoom: 1:1



Production Worksheet

Wilcom EmbroideryStudio - Designing



Design: **7**

Title:

Stitches: 15,442
 Height: 5.73 in
 Width: 7.00 in
 Colors: 4
 Colorway: Colorway 1
 Zoom: 1:1

Machine format: Tajima
 Color changes: 3
 Stops: 4
 Trims: 43
 Appliqués: 0
 Left: 88.9 mm
 Right: 88.8 mm
 Up: 66.8 mm
 Down: 78.7 mm
 EndX: 0.00 in
 EndY: 0.00 in
 Area 40.09 in²
 Max stitch: 9.3 mm
 Min stitch: 0.0 mm
 Max jump: 6.9 mm
 Total thread: 300.97ft
 Total bobbin: 117.53ft

Stop Sequence:

#	N#	Color	St.	Code	Name	Chart
1.	4		2,505		R255 G217 B1	
2.	18		2,621		R153 G153 B153	
3.	8		10,175		R0 G0 B0	
4.	9		139	9	White	Default

Production Worksheet

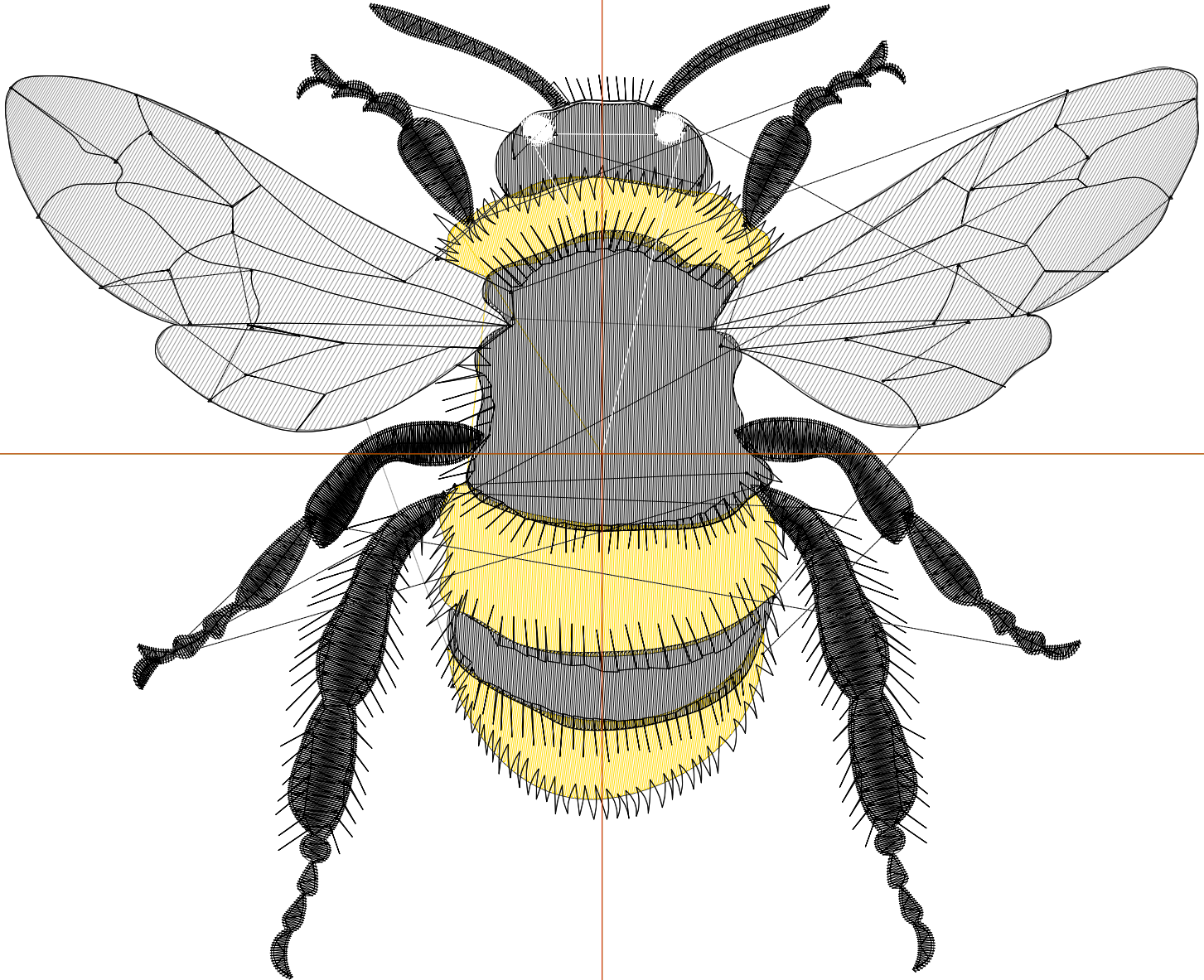
Wilcom EmbroideryStudio - Designing



Design: **7**

Title:

Stitches: 16,952
Height: 6.14 in
Width: 7.50 in
Colors: 4
Colorway: Colorway 1
Zoom: 1:1



Production Worksheet

Wilcom EmbroideryStudio - Designing



Design: **7**

Title:

Stitches: 16,952
 Height: 6.14 in
 Width: 7.50 in
 Colors: 4
 Colorway: Colorway 1
 Zoom: 1:1

Machine format: Tajima
 Color changes: 3
 Stops: 4
 Trims: 43
 Appliqués: 0
 Left: 95.3 mm
 Right: 95.2 mm
 Up: 72.0 mm
 Down: 83.9 mm
 EndX: 0.00 in
 EndY: 0.00 in
 Area 46.02 in²
 Max stitch: 10.0 mm
 Min stitch: 0.1 mm
 Max jump: 6.9 mm
 Total thread: 338.32ft
 Total bobbin: 133.79ft

Stop Sequence:

#	N#	Color	St.	Code	Name	Chart
1.	4		2,810		R255 G217 B1	
2.	18		2,957		R153 G153 B153	
3.	8		11,036		R0 G0 B0	
4.	9		147	9	White	Default