



Creative Fabrica

**Embroidery Design
Sewing Information**

www.creativefabrica.com/embroidery/

© Creative Fabrica

Production Worksheet

Wilcom EmbroideryStudio - Designing



Design: **3**

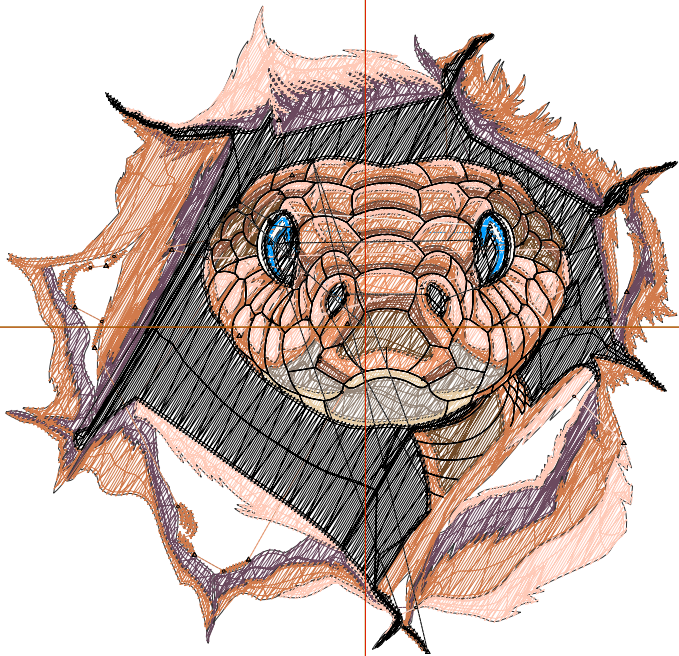
Title:

Stitches: 26,157
 Height: 3.36 in
 Width: 3.49 in
 Colors: 11
 Colorway: Colorway 1
 Zoom: 1:1

Machine format: Tajima
 Color changes: 10
 Stops: 11
 Trims: 59
 Appliqués: 0
 Left: 47.5 mm
 Right: 41.2 mm
 Up: 42.4 mm
 Down: 43.0 mm
 EndX: 0.00 in
 EndY: 0.00 in
 Area: 11.73 in²
 Max stitch: 11.3 mm
 Min stitch: 0.0 mm
 Max jump: 6.8 mm
 Total thread: 345.68ft
 Total bobbin: 101.00ft

Stop Sequence:

#	N#	Color	St.	Code	Name	Chart
1.	2		228	R1	G158 B255	
2.	3		3,658	R107	G73 B94	
3.	4		831	R112	G73 B38	
4.	5		492	R150	G135 B122	
5.	1		8,314	R209	G122 B75	
6.	7		429	R235	G146 B101	
7.	6		425	R230	G204 B164	
8.	9		1,655	R140	G82 B58	
9.	10		5,204	R255	G202 B184	
10.	11		185	R255	G253 B249	
11.	8		4,734	8	Black	Default



Production Worksheet

Wilcom EmbroideryStudio - Designing



Design: **4**

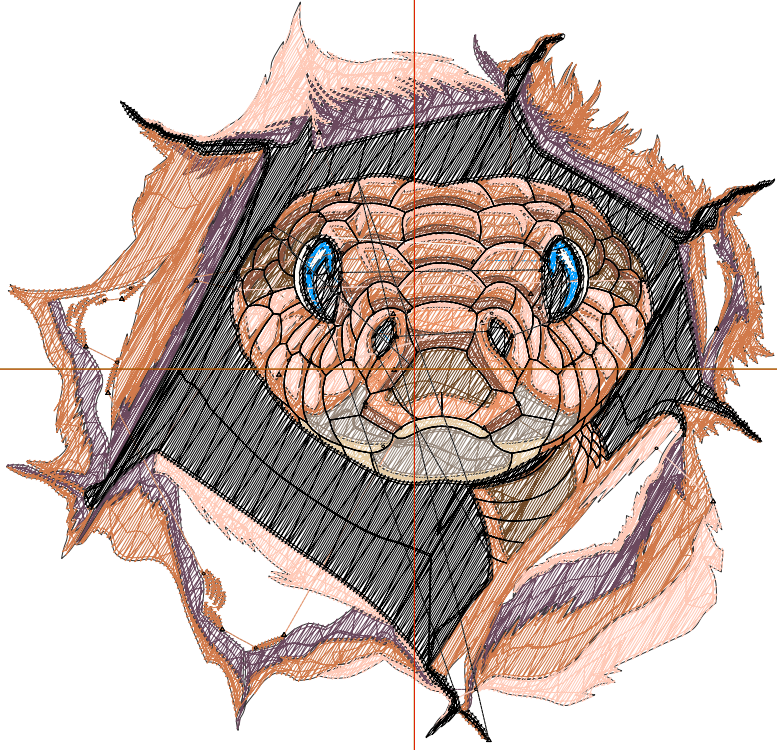
Title:

Stitches: 30,117
 Height: 3.83 in
 Width: 4.00 in
 Colors: 11
 Colorway: Colorway 1
 Zoom: 1:1

Machine format: Tajima
 Color changes: 10
 Stops: 11
 Trims: 63
 Appliqués: 0
 Left: 53.9 mm
 Right: 47.7 mm
 Up: 48.1 mm
 Down: 49.1 mm
 EndX: 0.00 in
 EndY: 0.00 in
 Area: 15.31 in²
 Max stitch: 11.4 mm
 Min stitch: 0.0 mm
 Max jump: 6.9 mm
 Total thread: 411.82ft
 Total bobbin: 124.80ft

Stop Sequence:

#	N#	Color	St.	Code	Name	Chart
1.	2		273	R1	G158 B255	
2.	3		4,247	R107	G73 B94	
3.	4		959	R112	G73 B38	
4.	5		568	R150	G135 B122	
5.	1		9,578	R209	G122 B75	
6.	7		483	R235	G146 B101	
7.	6		496	R230	G204 B164	
8.	9		1,883	R140	G82 B58	
9.	10		5,931	R255	G202 B184	
10.	11		204	R255	G253 B249	
11.	8		5,493	8	Black	Default



Production Worksheet

Wilcom EmbroideryStudio - Designing



Design: **4**

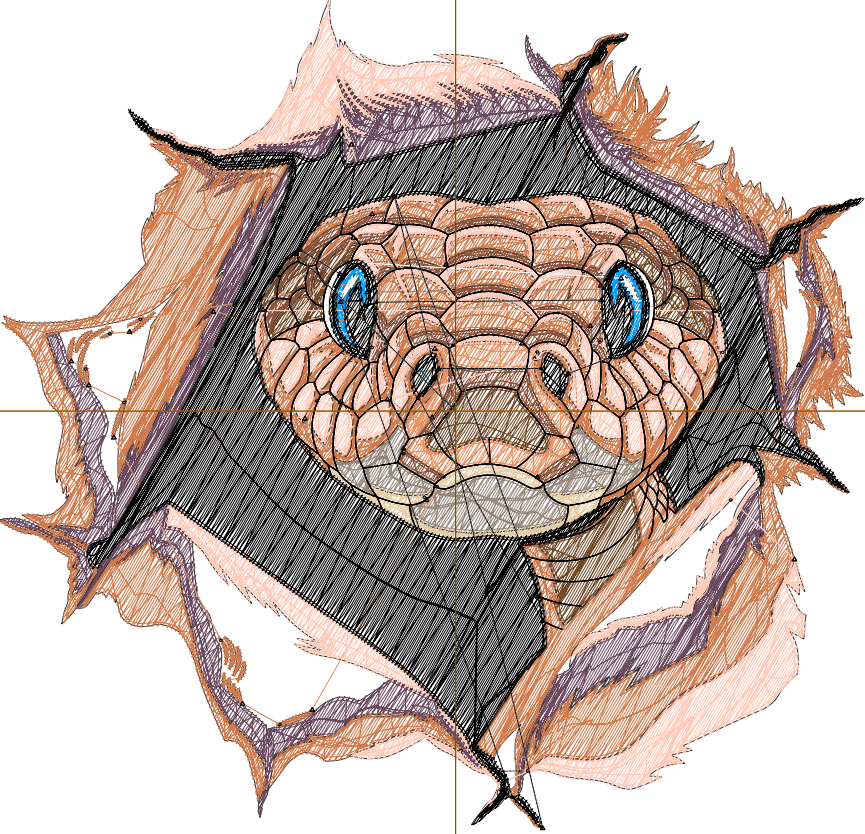
Title:

Stitches: 34,156
 Height: 4.32 in
 Width: 4.49 in
 Colors: 11
 Colorway: Colorway 1
 Zoom: 1:1

Machine format: Tajima
 Color changes: 10
 Stops: 11
 Trims: 67
 Appliqués: 0
 Left: 60.2 mm
 Right: 53.8 mm
 Up: 54.6 mm
 Down: 55.2 mm
 EndX: 0.00 in
 EndY: 0.00 in
 Area 19.40 in²
 Max stitch: 11.6 mm
 Min stitch: 0.0 mm
 Max jump: 7.0 mm
 Total thread: 480.10ft
 Total bobbin: 149.55ft

Stop Sequence:

#	N#	Color	St.	Code	Name	Chart
1.	2		303		R1 G158 B255	
2.	3		4,832		R107 G73 B94	
3.	4		1,090		R112 G73 B38	
4.	5		720		R150 G135 B122	
5.	1		10,763		R209 G122 B75	
6.	7		551		R235 G146 B101	
7.	6		578		R230 G204 B164	
8.	9		2,105		R140 G82 B58	
9.	10		6,686		R255 G202 B184	
10.	11		217		R255 G253 B249	
11.	8		6,309	8	Black	Default



Production Worksheet

Wilcom EmbroideryStudio - Designing



Design: **5**

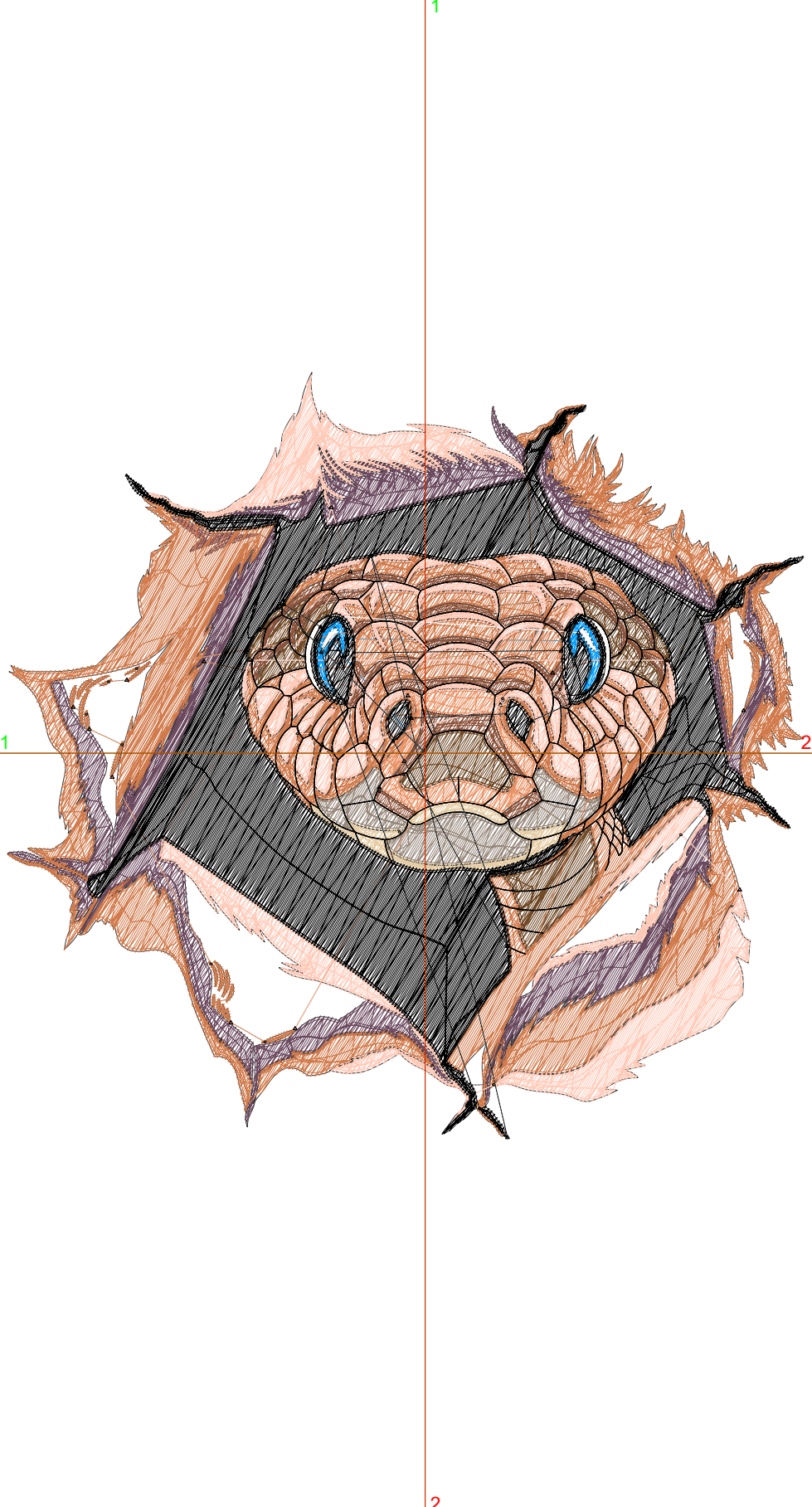
Title:

Stitches: 38,477
 Height: 4.79 in
 Width: 4.99 in
 Colors: 11
 Colorway: Colorway 1
 Zoom: 1:1

Machine format: Tajima
 Color changes: 10
 Stops: 11
 Trims: 65
 Appliqués: 0
 Left: 66.6 mm
 Right: 60.3 mm
 Up: 60.4 mm
 Down: 61.3 mm
 EndX: 0.00 in
 EndY: 0.00 in
 Area: 23.91 in²
 Max stitch: 10.6 mm
 Min stitch: 0.0 mm
 Max jump: 6.9 mm
 Total thread: 555.58ft
 Total bobbin: 177.48ft

Stop Sequence:

#	N#	Color	St.	Code	Name	Chart
1.	2		323		R1 G158 B255	
2.	3		5,468		R107 G73 B94	
3.	4		1,229		R112 G73 B38	
4.	5		748		R150 G135 B122	
5.	1		12,104		R209 G122 B75	
6.	7		622		R235 G146 B101	
7.	6		624		R230 G204 B164	
8.	9		2,411		R140 G82 B58	
9.	10		7,474		R255 G202 B184	
10.	11		247		R255 G253 B249	
11.	8		7,225	8	Black	Default



Production Worksheet

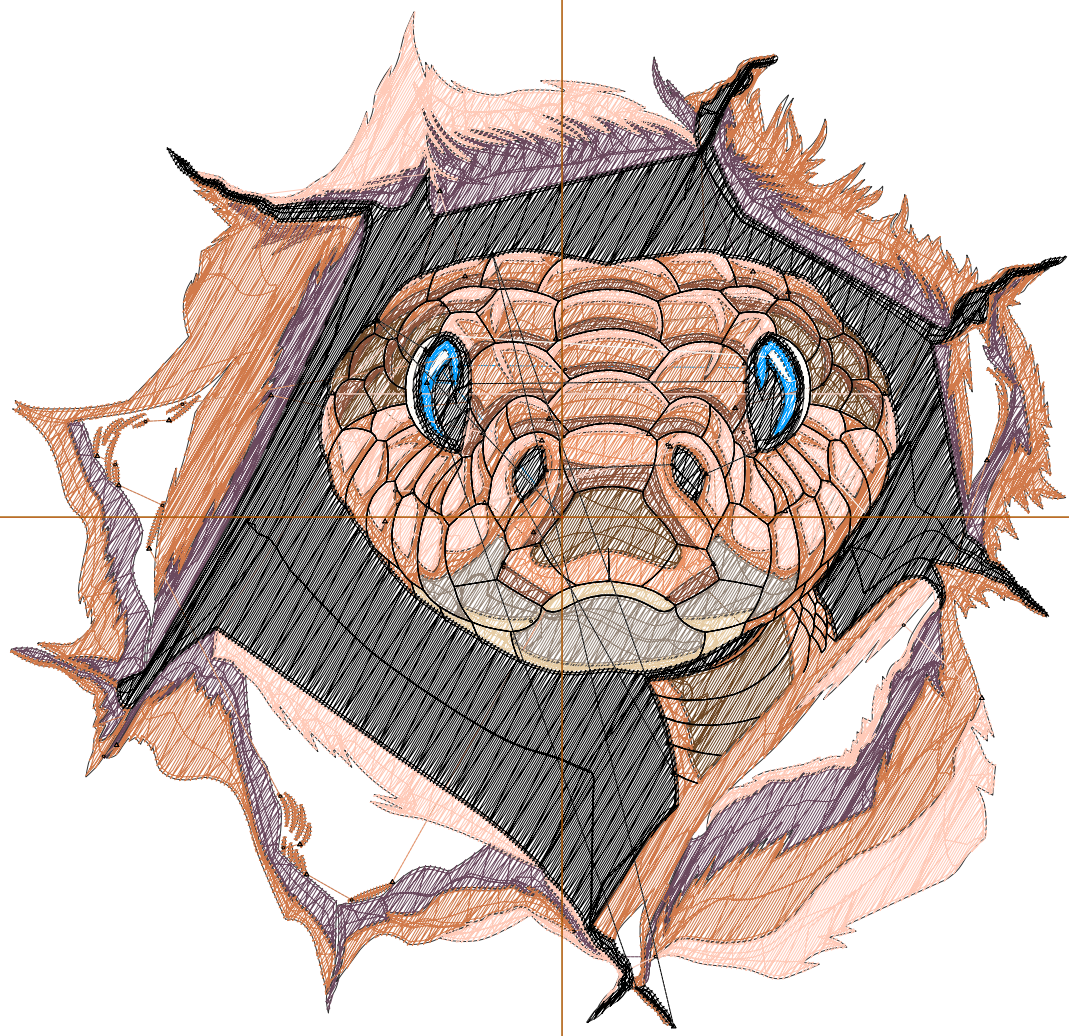
Wilcom EmbroideryStudio - Designing



Design: **5**

Title:

Stitches: 43,099
Height: 5.28 in
Width: 5.49 in
Colors: 11
Colorway: Colorway 1
Zoom: 1:1



Production Worksheet

Wilcom EmbroideryStudio - Designing



Design: **5**

Title:

Stitches: 43,099
 Height: 5.28 in
 Width: 5.49 in
 Colors: 11
 Colorway: Colorway 1
 Zoom: 1:1

Machine format: Tajima
 Color changes: 10
 Stops: 11
 Trims: 70
 Appliqués: 0
 Left: 73.0 mm
 Right: 66.6 mm
 Up: 66.8 mm
 Down: 67.4 mm
 EndX: 0.00 in
 EndY: 0.00 in
 Area 29.03 in²
 Max stitch: 11.7 mm
 Min stitch: 0.0 mm
 Max jump: 7.0 mm
 Total thread: 637.25ft
 Total bobbin: 207.90ft

Stop Sequence:

#	N#	Color	St.	Code	Name	Chart
1.	2		355		R1 G158 B255	
2.	3		6,083		R107 G73 B94	
3.	4		1,414		R112 G73 B38	
4.	5		833		R150 G135 B122	
5.	1		13,649		R209 G122 B75	
6.	7		690		R235 G146 B101	
7.	6		687		R230 G204 B164	
8.	9		2,632		R140 G82 B58	
9.	10		8,391		R255 G202 B184	
10.	11		279		R255 G253 B249	
11.	8		8,084	8	Black	Default

Production Worksheet

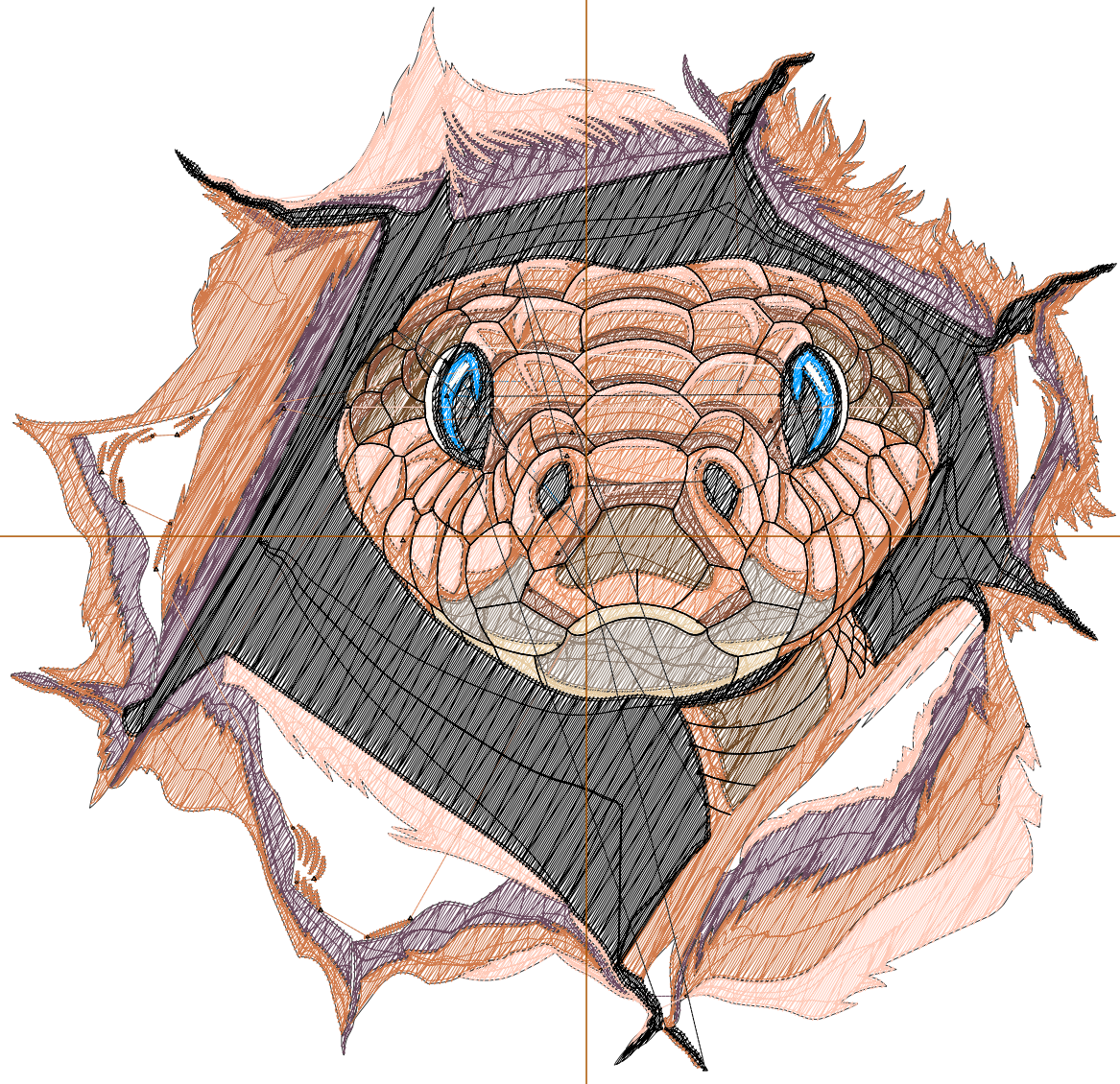
Wilcom EmbroideryStudio - Designing



Design: **6**

Title:

Stitches: 47,940
Height: 5.74 in
Width: 5.99 in
Colors: 11
Colorway: Colorway 1
Zoom: 1:1



Production Worksheet

Wilcom EmbroideryStudio - Designing



Design: **6**

Title:

Stitches: 47,940
 Height: 5.74 in
 Width: 5.99 in
 Colors: 11
 Colorway: Colorway 1
 Zoom: 1:1

Machine format: Tajima
 Color changes: 10
 Stops: 11
 Trims: 72
 Appliqués: 0
 Left: 79.3 mm
 Right: 72.9 mm
 Up: 72.3 mm
 Down: 73.5 mm
 EndX: 0.00 in
 EndY: 0.00 in
 Area 34.37 in²
 Max stitch: 8.1 mm
 Min stitch: 0.0 mm
 Max jump: 7.0 mm
 Total thread: 724.35ft
 Total bobbin: 240.69ft

Stop Sequence:

#	N#	Color	St.	Code	Name	Chart
1.	2		390		R1 G158 B255	
2.	3		6,867		R107 G73 B94	
3.	4		1,531		R112 G73 B38	
4.	5		1,010		R150 G135 B122	
5.	1		15,081		R209 G122 B75	
6.	7		760		R235 G146 B101	
7.	6		743		R230 G204 B164	
8.	9		2,849		R140 G82 B58	
9.	10		9,173		R255 G202 B184	
10.	11		295		R255 G253 B249	
11.	8		9,239	8	Black	Default

Production Worksheet

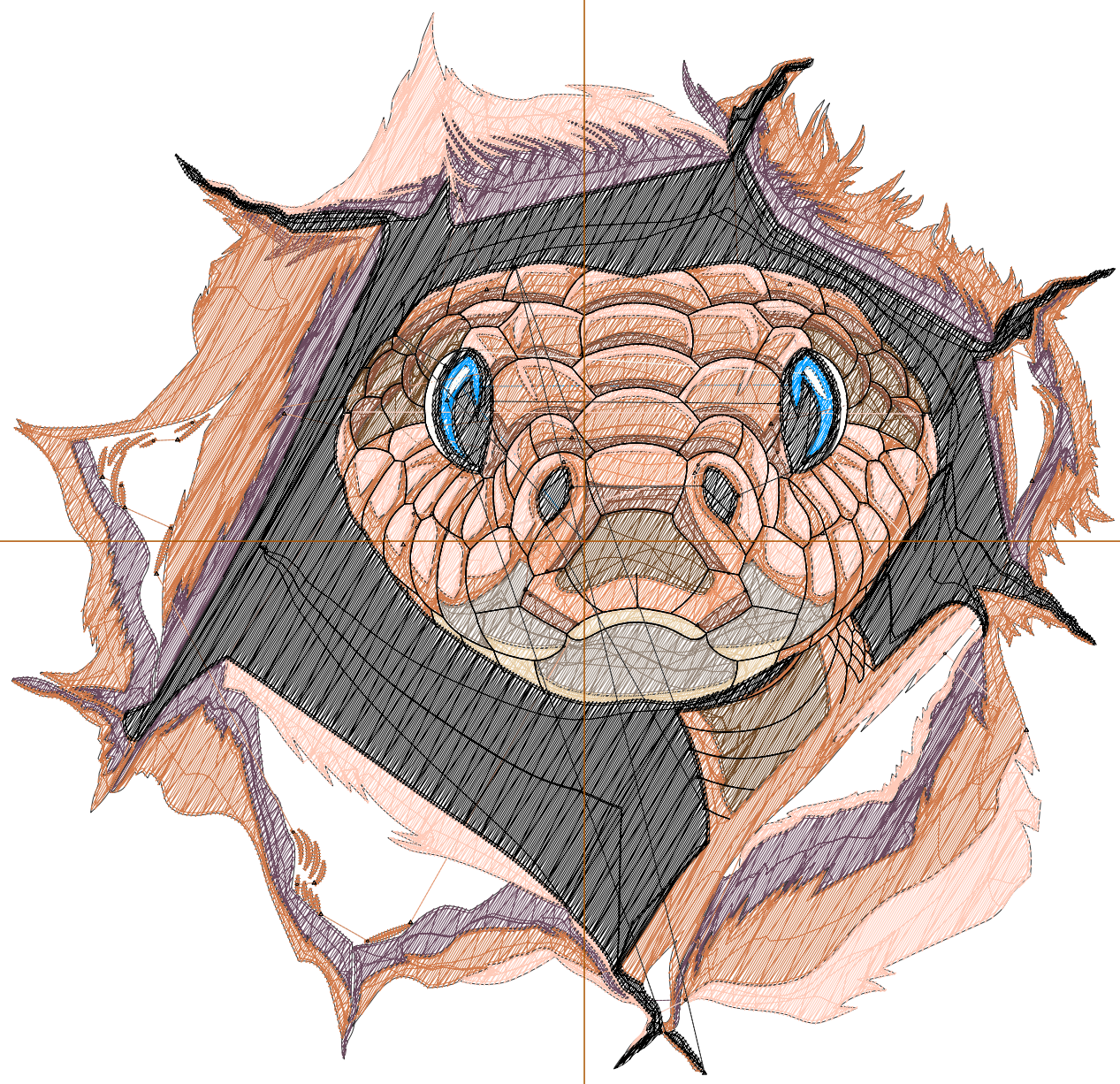
Wilcom EmbroideryStudio - Designing



Design: **6**

Title:

Stitches: 52,538
Height: 6.24 in
Width: 6.50 in
Colors: 11
Colorway: Colorway 1
Zoom: 1:1



Production Worksheet

Wilcom EmbroideryStudio - Designing



Design: **6**

Title:

Stitches: 52,538
 Height: 6.24 in
 Width: 6.50 in
 Colors: 11
 Colorway: Colorway 1
 Zoom: 1:1

Machine format: Tajima
 Color changes: 10
 Stops: 11
 Trims: 72
 Appliqués: 0
 Left: 85.6 mm
 Right: 79.4 mm
 Up: 79.0 mm
 Down: 79.6 mm
 EndX: 0.00 in
 EndY: 0.00 in
 Area 40.57 in²
 Max stitch: 11.3 mm
 Min stitch: 0.0 mm
 Max jump: 7.0 mm
 Total thread: 811.60ft
 Total bobbin: 274.52ft

Stop Sequence:

#	N#	Color	St.	Code	Name	Chart
1.	2		421		R1 G158 B255	
2.	3		7,494		R107 G73 B94	
3.	4		1,739		R112 G73 B38	
4.	5		1,122		R150 G135 B122	
5.	1		16,413		R209 G122 B75	
6.	7		846		R235 G146 B101	
7.	6		806		R230 G204 B164	
8.	9		3,073		R140 G82 B58	
9.	10		10,026		R255 G202 B184	
10.	11		328		R255 G253 B249	
11.	8		10,268	8	Black	Default

Production Worksheet

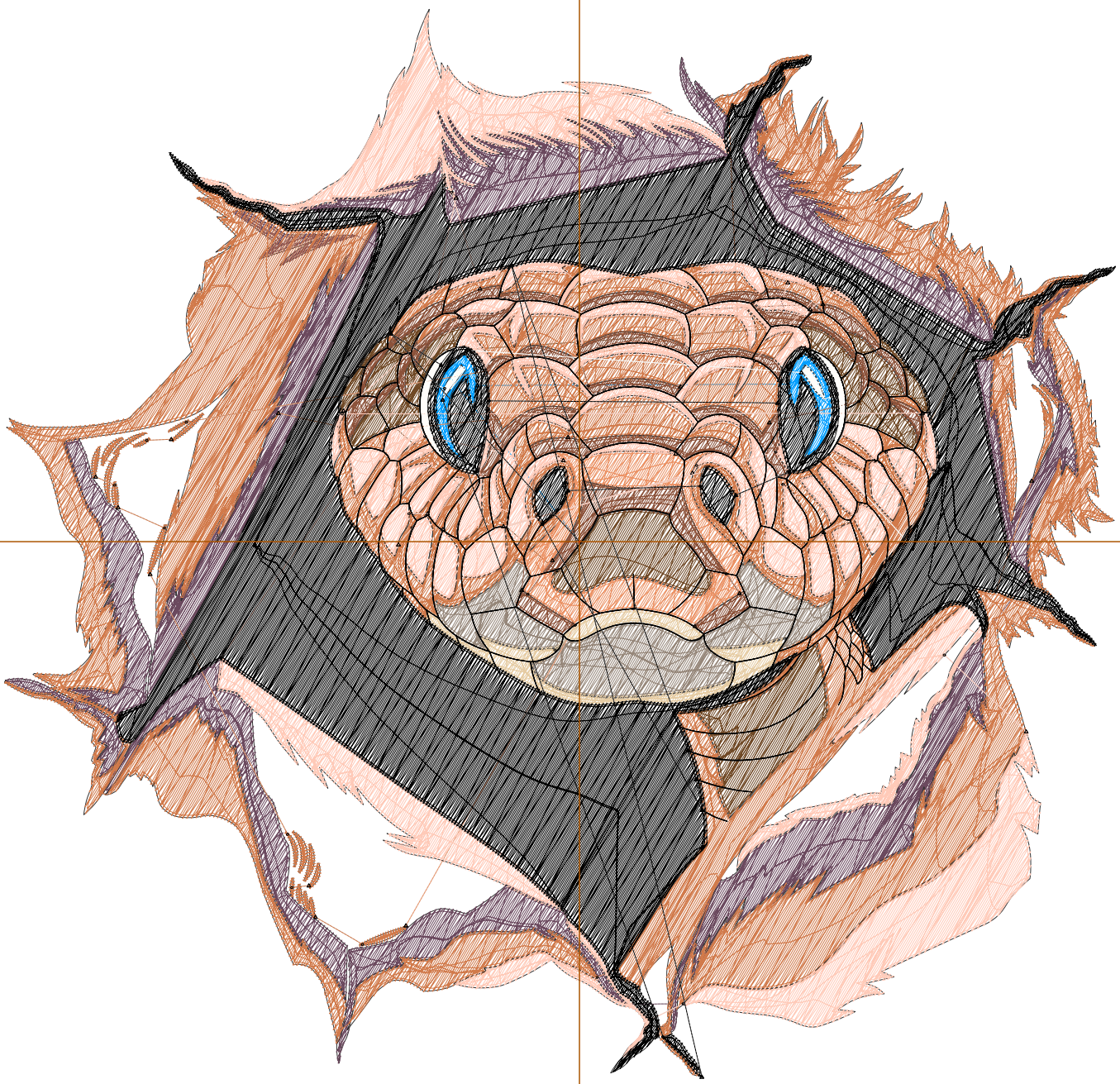
Wilcom EmbroideryStudio - Designing



Design: **7**

Title:

Stitches: 57,404
Height: 6.71 in
Width: 7.00 in
Colors: 11
Colorway: Colorway 1
Zoom: 1:1



Production Worksheet

Wilcom EmbroideryStudio - Designing



Design: **7**

Title:

Stitches: 57,404
 Height: 6.71 in
 Width: 7.00 in
 Colors: 11
 Colorway: Colorway 1
 Zoom: 1:1

Machine format: Tajima
 Color changes: 10
 Stops: 11
 Trims: 74
 Appliqués: 0
 Left: 92.0 mm
 Right: 85.8 mm
 Up: 84.8 mm
 Down: 85.7 mm
 EndX: 0.00 in
 EndY: 0.00 in
 Area 46.97 in²
 Max stitch: 10.8 mm
 Min stitch: 0.0 mm
 Max jump: 7.0 mm
 Total thread: 904.50ft
 Total bobbin: 310.65ft

Stop Sequence:

#	N#	Color	St.	Code	Name	Chart
1.	2		445		R1 G158 B255	
2.	3		8,176		R107 G73 B94	
3.	4		1,867		R112 G73 B38	
4.	5		1,224		R150 G135 B122	
5.	1		17,911		R209 G122 B75	
6.	7		926		R235 G146 B101	
7.	6		885		R230 G204 B164	
8.	9		3,289		R140 G82 B58	
9.	10		10,878		R255 G202 B184	
10.	11		362		R255 G253 B249	
11.	8		11,439	8	Black	Default

Production Worksheet

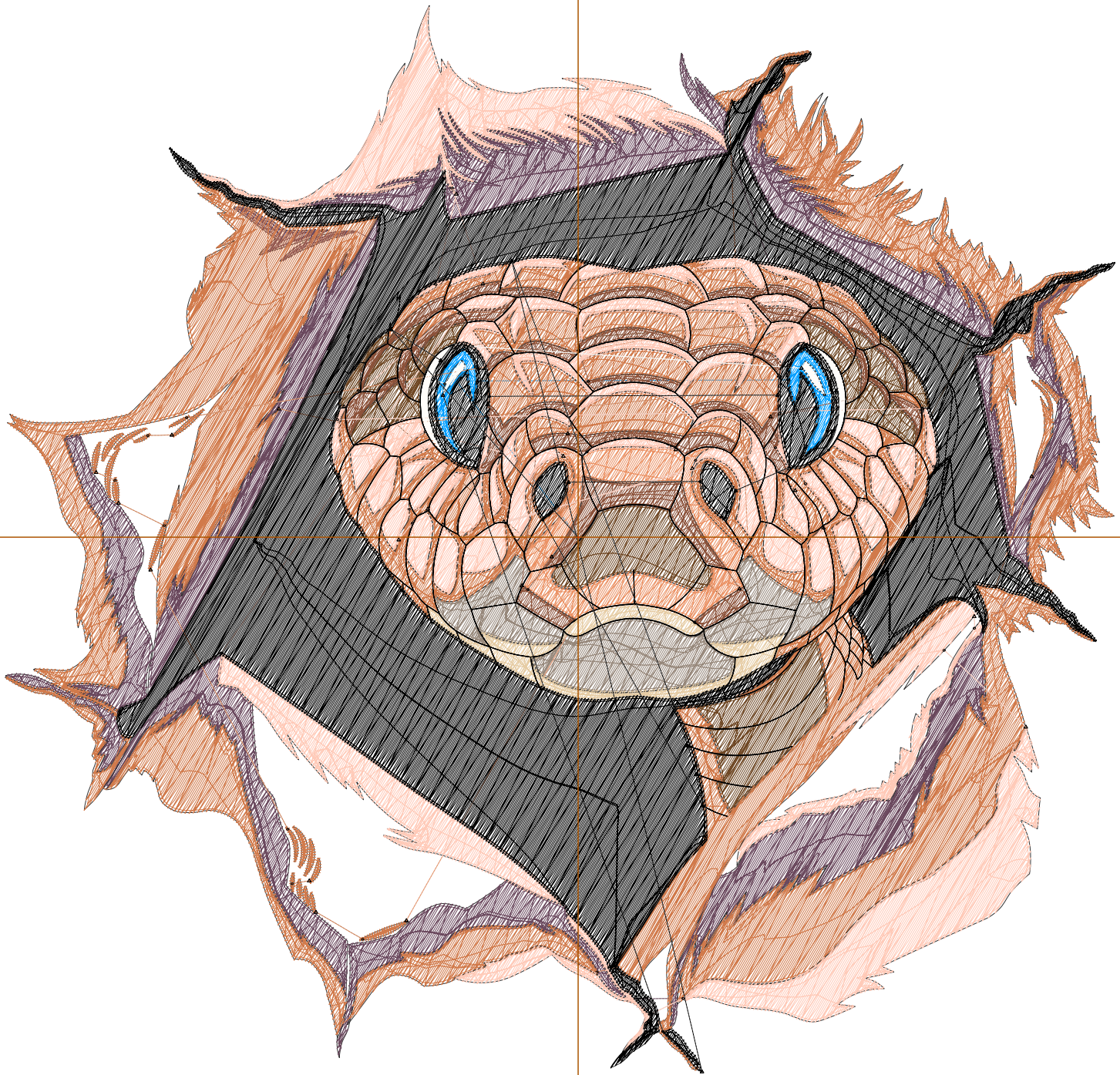
Wilcom EmbroideryStudio - Designing



Design: **7**

Title:

Stitches: 62,474
Height: 7.19 in
Width: 7.50 in
Colors: 11
Colorway: Colorway 1
Zoom: 1:1



Production Worksheet

Wilcom EmbroideryStudio - Designing



Design: **7**

Title:

Stitches: 62,474
 Height: 7.19 in
 Width: 7.50 in
 Colors: 11
 Colorway: Colorway 1
 Zoom: 1:1

Machine format: Tajima
 Color changes: 10
 Stops: 11
 Trims: 77
 Appliqués: 0
 Left: 98.4 mm
 Right: 92.1 mm
 Up: 91.0 mm
 Down: 91.8 mm
 EndX: 0.00 in
 EndY: 0.00 in
 Area 53.95 in²
 Max stitch: 11.5 mm
 Min stitch: 0.0 mm
 Max jump: 7.0 mm
 Total thread: 1002.05ft
 Total bobbin: 348.74ft

Stop Sequence:

#	N#	Color	St.	Code	Name	Chart
1.	2		478		R1 G158 B255	
2.	3		8,962		R107 G73 B94	
3.	4		2,044		R112 G73 B38	
4.	5		1,348		R150 G135 B122	
5.	1		19,435		R209 G122 B75	
6.	7		1,006		R235 G146 B101	
7.	6		945		R230 G204 B164	
8.	9		3,582		R140 G82 B58	
9.	10		11,708		R255 G202 B184	
10.	11		390		R255 G253 B249	
11.	8		12,574	8	Black	Default