



Creative Fabrica

**Embroidery Design
Sewing Information**

www.creativefabrica.com/embroidery/

© Creative Fabrica

Approval Sheet

Wilcom EmbroideryStudio - Designing

BEE

Design: **Bee**

Title:

Height: 3.00 in
Width: 2.84 in
Colors: 3
Colorway: Colorway 1
Zoom: 1:1



Product type:
Product:
Total qty:
Product colors:
Position:

Terms and Conditions:

Approved By:

Date:

Production Worksheet

Wilcom EmbroideryStudio - Designing

BEE

Design: **Bee**

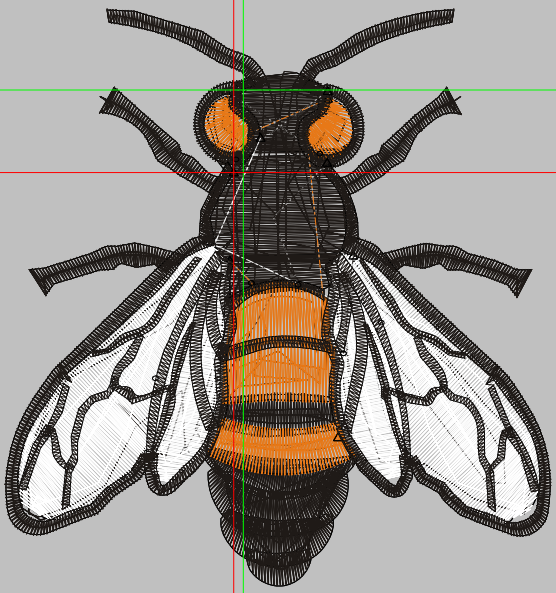
Title:

Stitches: 19,031
 Height: 3.00 in
 Width: 2.84 in
 Colors: 3
 Colorway: Colorway 1
 Zoom: 1:1

Machine format: Tajima
 Color changes: 8
 Stops: 9
 Trims: 22
 Appliqués: 0
 Left: 31.5 mm
 Right: 40.7 mm
 Up: 10.7 mm
 Down: 65.6 mm
 EndX: -0.05 in
 EndY: -0.43 in
 Area: 8.54 in²
 Max stitch: 8.6 mm
 Min stitch: 0.3 mm
 Max jump: 7.2 mm
 Total thread: 327.60ft
 Total bobbin: 118.38ft

Stop Sequence:

#	N#	Color	St.	Code	Name	Chart
1.	3	Black	2,820	13	Black	Wilcom
2.	2	Orange	523	9	Orange	Wilcom
3.	3	Black	404	13	Black	Wilcom
4.	9	White	2,625	9	White	Default
5.	3	Black	5,965	13	Black	Wilcom
6.	2	Orange	523	9	Orange	Wilcom
7.	3	Black	404	13	Black	Wilcom
8.	9	White	2,625	9	White	Default
9.	3	Black	3,140	13	Black	Wilcom



Approval Sheet

Wilcom EmbroideryStudio - Designing

3000

Design: **3000**

Title:

Height: 4.00 in
Width: 3.79 in
Colors: 3
Colorway: Colorway 1
Zoom: 1:1



Product type:
Product:
Total qty:
Product colors:
Position:

Terms and Conditions:

Approved By:

Date:

Production Worksheet

Wilcom EmbroideryStudio - Designing

3000

Design: 3000

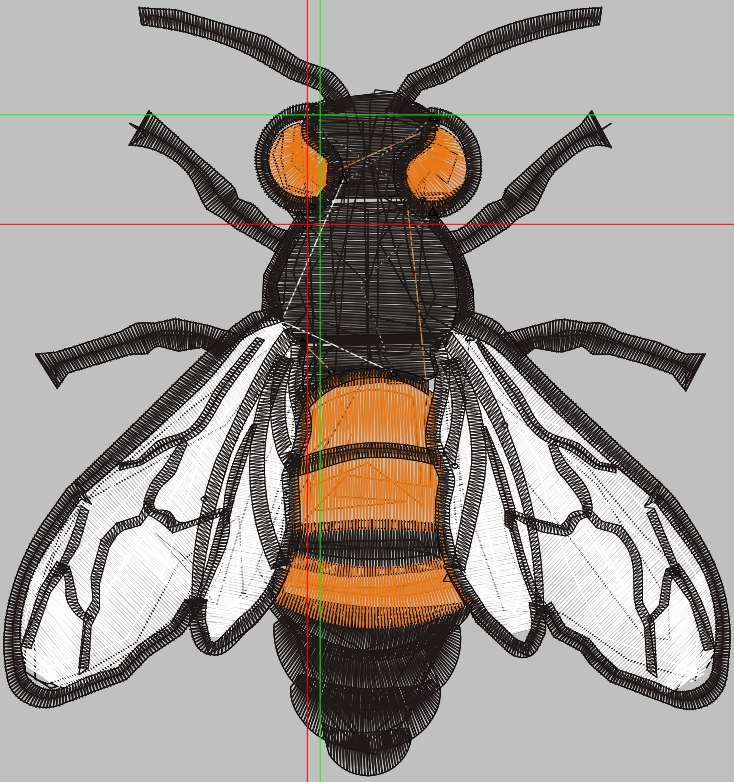
Title:

Stitches: 26,861
 Height: 4.00 in
 Width: 3.79 in
 Colors: 3
 Colorway: Colorway 1
 Zoom: 1:1

Machine format: Tajima
 Color changes: 8
 Stops: 9
 Trims: 22
 Appliqués: 0
 Left: 42.0 mm
 Right: 54.3 mm
 Up: 14.3 mm
 Down: 87.4 mm
 EndX: -0.07 in
 EndY: -0.57 in
 Area 15.17 in²
 Max stitch: 11.4 mm
 Min stitch: 0.1 mm
 Max jump: 9.6 mm
 Total thread: 518.20ft
 Total bobbin: 200.89ft

Stop Sequence:

#	N#	Color	St.	Code	Name	Chart
1.	3	Black	3,923	13	Black	Wilcom
2.	2	Orange	694	9	Orange	Wilcom
3.	3	Black	527	13	Black	Wilcom
4.	9	White	4,140	9	White	Default
5.	3	Black	8,071	13	Black	Wilcom
6.	2	Orange	694	9	Orange	Wilcom
7.	3	Black	527	13	Black	Wilcom
8.	9	White	4,140	9	White	Default
9.	3	Black	4,143	13	Black	Wilcom



Approval Sheet

Wilcom EmbroideryStudio - Designing

4000

Design: **4000**

Title:

Height: 5.00 in
Width: 4.73 in
Colors: 3
Colorway: Colorway 1
Zoom: 1:1



Product type:
Product:
Total qty:
Product colors:
Position:

Terms and Conditions:

Approved By:

Date:

Production Worksheet

Wilcom EmbroideryStudio - Designing

4000

Design: **4000**

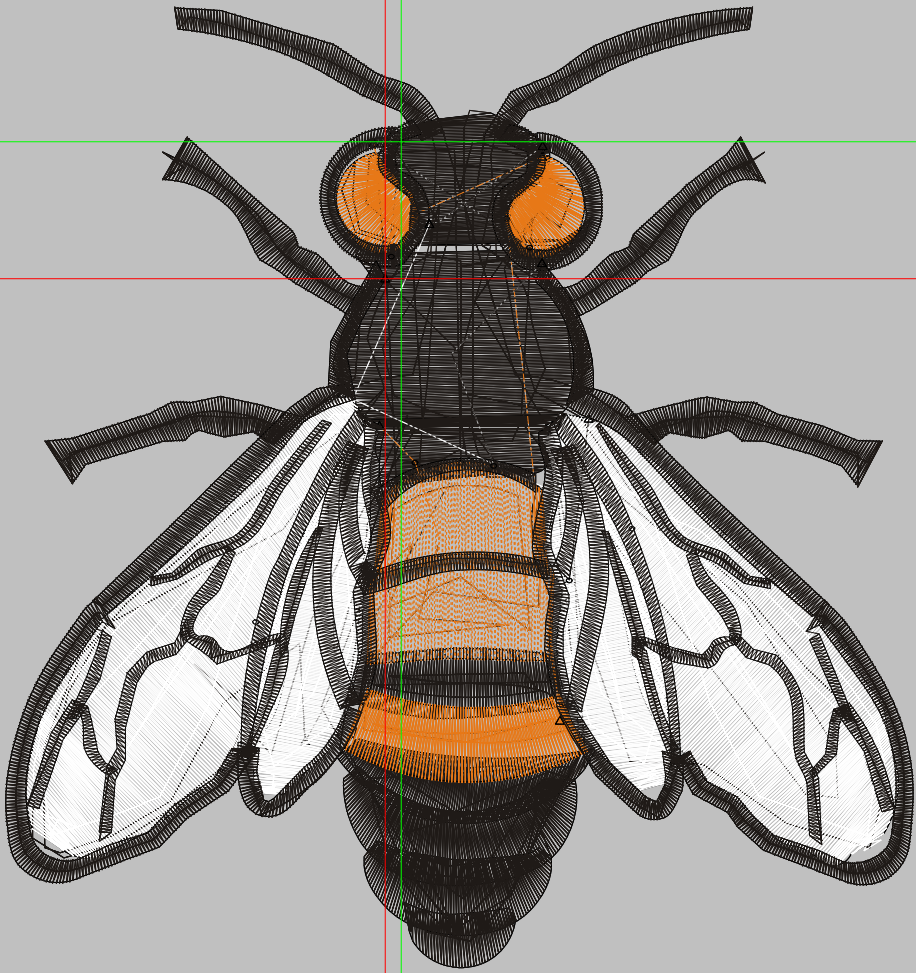
Title:

Stitches: 36,059
 Height: 5.00 in
 Width: 4.73 in
 Colors: 3
 Colorway: Colorway 1
 Zoom: 1:1

Machine format: Tajima
 Color changes: 8
 Stops: 9
 Trims: 22
 Appliqués: 0
 Left: 52.4 mm
 Right: 67.8 mm
 Up: 17.8 mm
 Down: 109.3 mm
 EndX: -0.08 in
 EndY: -0.71 in
 Area: 23.69 in²
 Max stitch: 12.1 mm
 Min stitch: 0.3 mm
 Max jump: 11.9 mm
 Total thread: 753.56ft
 Total bobbin: 304.59ft

Stop Sequence:

#	N#	Color	St.	Code	Name	Chart
1.	3	Black	5,116	13	Black	Wilcom
2.	2	Orange	1,089	9	Orange	Wilcom
3.	3	Black	648	13	Black	Wilcom
4.	9	White	6,008	9	White	Default
5.	3	Black	10,286	13	Black	Wilcom
6.	2	Orange	1,089	9	Orange	Wilcom
7.	3	Black	648	13	Black	Wilcom
8.	9	White	6,008	9	White	Default
9.	3	Black	5,165	13	Black	Wilcom



Approval Sheet

Wilcom EmbroideryStudio - Designing

5000

Design: **5000**

Title:

Height: 6.00 in
Width: 5.68 in
Colors: 3
Colorway: Colorway 1
Zoom: 1:1



Product type:
Product:
Total qty:
Product colors:
Position:

Terms and Conditions:

Approved By:

Date:

Production Worksheet

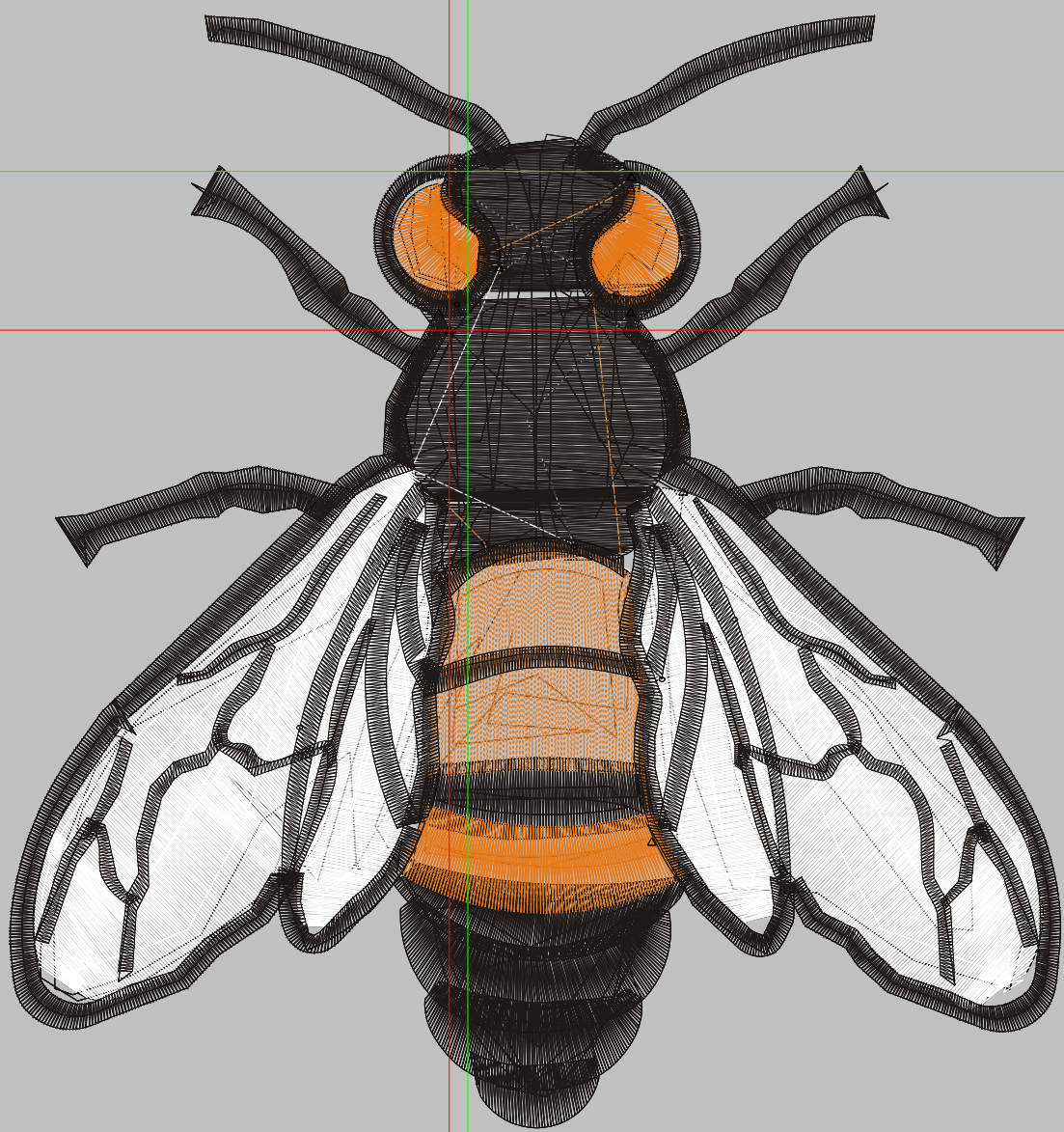
Wilcom EmbroideryStudio - Designing

5000

Design: 5000

Title:

Stitches: 46,327
Height: 6.00 in
Width: 5.68 in
Colors: 3
Colorway: Colorway 1
Zoom: 1:1



Production Worksheet

Wilcom EmbroideryStudio - Designing

5000




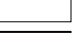





Design: **5000**

Title:

Stitches: 46,327
 Height: 6.00 in
 Width: 5.68 in
 Colors: 3
 Colorway: Colorway 1
 Zoom: 1:1

Machine format: Tajima
 Color changes: 8
 Stops: 9
 Trims: 22
 Appliqués: 0
 Left: 62.9 mm
 Right: 81.4 mm
 Up: 21.4 mm
 Down: 131.1 mm
 EndX: -0.10 in
 EndY: -0.86 in
 Area: 34.10 in²
 Max stitch: 12.0 mm
 Min stitch: 0.1 mm
 Max jump: 7.0 mm
 Total thread: 1032.93ft
 Total bobbin: 430.22ft

Stop Sequence:

#	N#	Color	St.	Code	Name	Chart
1.	3		6,422	13	Black	Wilcom
2.	2		1,548	9	Orange	Wilcom
3.	3		774	13	Black	Wilcom
4.	9		8,239	9	White	Default
5.	3		12,604	13	Black	Wilcom
6.	2		1,548	9	Orange	Wilcom
7.	3		774	13	Black	Wilcom
8.	9		8,239	9	White	Default
9.	3		6,177	13	Black	Wilcom

Approval Sheet

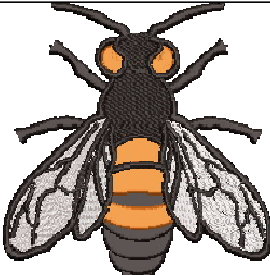
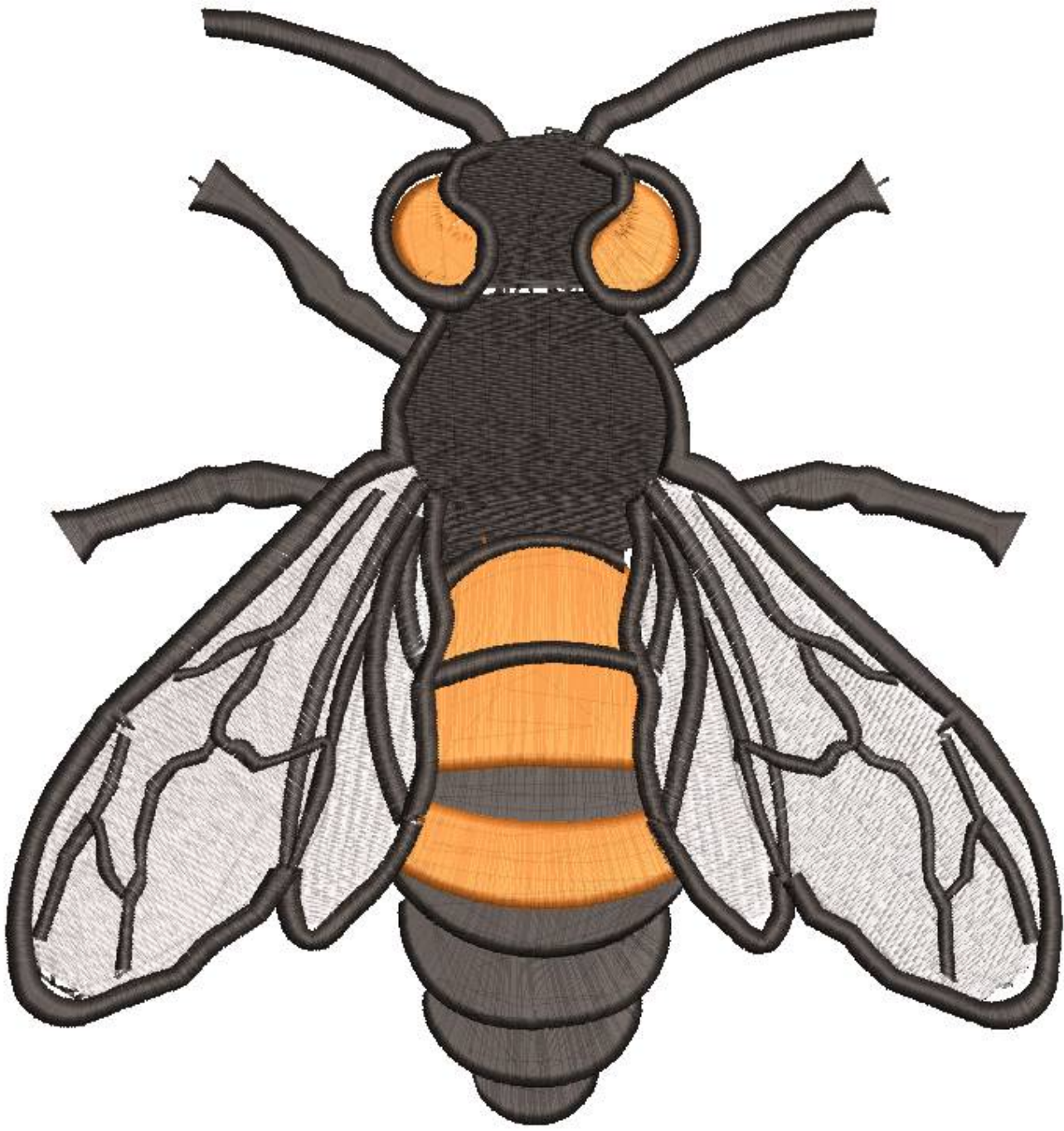
Wilcom EmbroideryStudio - Designing

6000

Design: **6000**

Title:

Height: 7.00 in
Width: 6.62 in
Colors: 3
Colorway: Colorway 1
Zoom: 1:1



Product type:
Product:
Total qty:
Product colors:
Position:

Terms and Conditions:

Approved By:

Date:

Production Worksheet

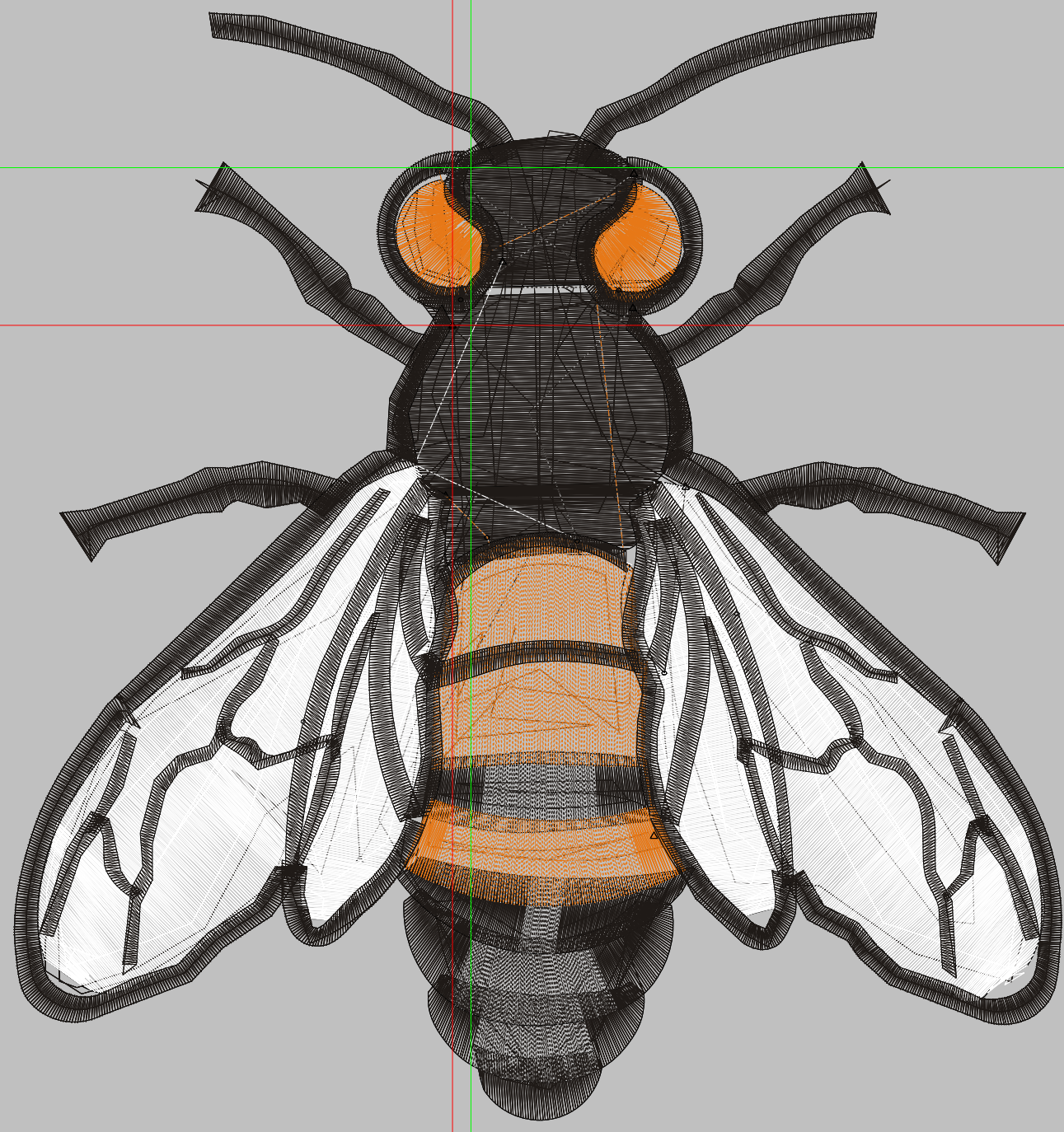
Wilcom EmbroideryStudio - Designing

6000

Design: 6000

Title:

Stitches: 58,233
Height: 7.00 in
Width: 6.62 in
Colors: 3
Colorway: Colorway 1
Zoom: 1:1



Production Worksheet

Wilcom EmbroideryStudio - Designing

6000










Design: **6000**

Title:

Stitches: 58,233
 Height: 7.00 in
 Width: 6.62 in
 Colors: 3
 Colorway: Colorway 1
 Zoom: 1:1

Machine format: Tajima
 Color changes: 8
 Stops: 9
 Trims: 22
 Appliqués: 0
 Left: 73.4 mm
 Right: 94.9 mm
 Up: 24.9 mm
 Down: 153.0 mm
 EndX: -0.12 in
 EndY: -1.00 in
 Area 46.40 in²
 Max stitch: 12.1 mm
 Min stitch: 0.3 mm
 Max jump: 7.0 mm
 Total thread: 1358.43ft
 Total bobbin: 576.81ft

Stop Sequence:

#	N#	Color	St.	Code	Name	Chart
1.	3		8,246	13	Black	Wilcom
2.	2		1,974	9	Orange	Wilcom
3.	3		887	13	Black	Wilcom
4.	9		10,825	9	White	Default
5.	3		15,432	13	Black	Wilcom
6.	2		1,974	9	Orange	Wilcom
7.	3		887	13	Black	Wilcom
8.	9		10,825	9	White	Default
9.	3		7,181	13	Black	Wilcom

Approval Sheet

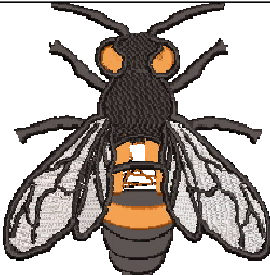
Wilcom EmbroideryStudio - Designing

7000

Design: **7000**

Title:

Height: 8.00 in
Width: 7.57 in
Colors: 3
Colorway: Colorway 1
Zoom: 0.99



Product type:
Product:
Total qty:
Product colors:
Position:

Terms and Conditions:

Approved By:

Date:

Production Worksheet

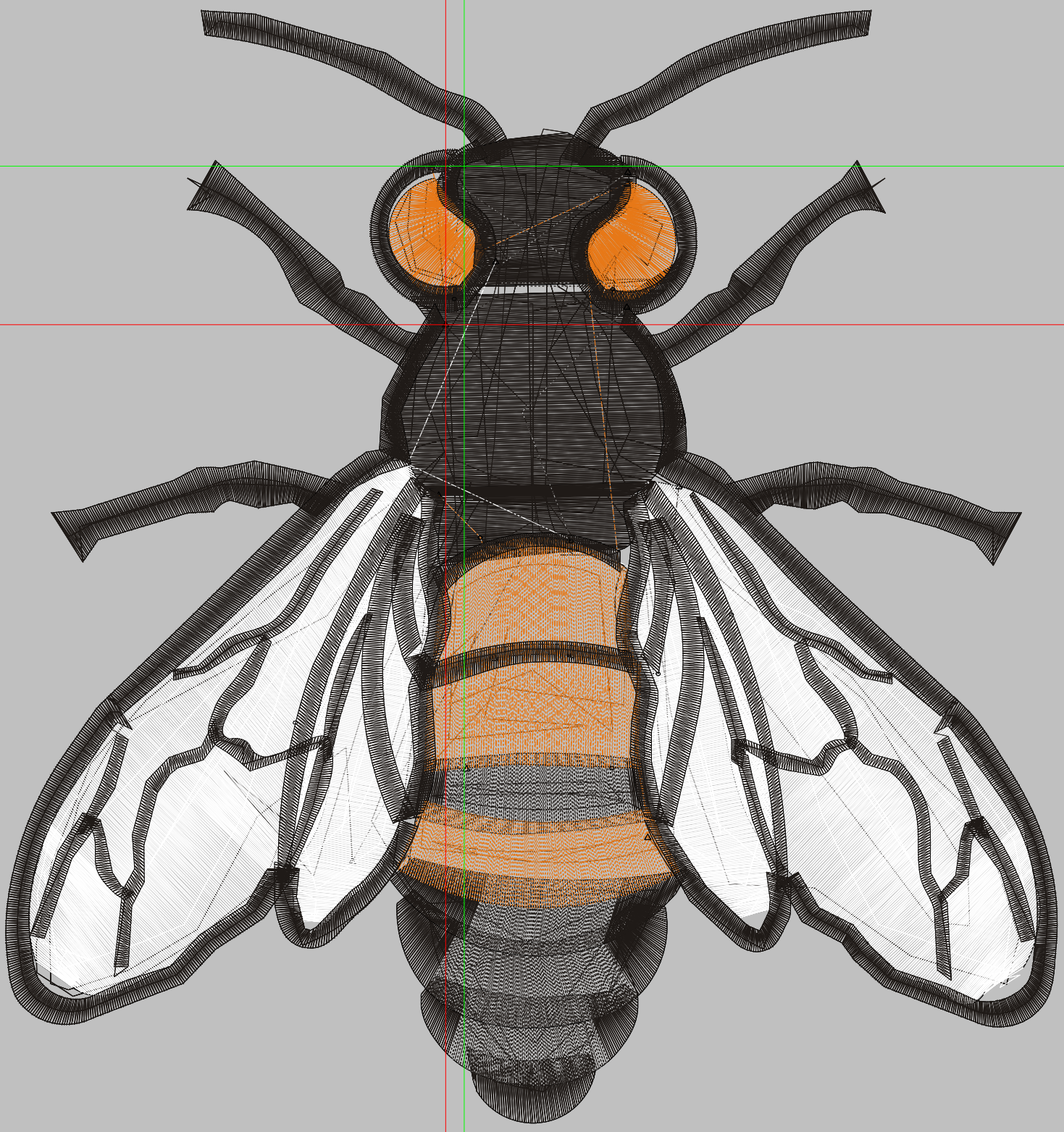
Wilcom EmbroideryStudio - Designing

7000

Design: **7000**

Title:

Stitches: 72,430
Height: 8.00 in
Width: 7.57 in
Colors: 3
Colorway: Colorway 1
Zoom: 1:1



Production Worksheet

Wilcom EmbroideryStudio - Designing

7000




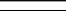





Design: **7000**

Title:

Stitches: 72,430
 Height: 8.00 in
 Width: 7.57 in
 Colors: 3
 Colorway: Colorway 1
 Zoom: 1:1

Machine format: Tajima
 Color changes: 8
 Stops: 9
 Trims: 30
 Appliqués: 0
 Left: 83.8 mm
 Right: 108.4 mm
 Up: 28.5 mm
 Down: 174.8 mm
 EndX: -0.13 in
 EndY: -1.14 in
 Area: 60.59 in²
 Max stitch: 12.1 mm
 Min stitch: 0.3 mm
 Max jump: 7.0 mm
 Total thread: 1700.79ft
 Total bobbin: 724.49ft

Stop Sequence:

#	N#	Color	St.	Code	Name	Chart
1.	3		10,484	13	Black	Wilcom
2.	2		2,708	9	Orange	Wilcom
3.	3		1,010	13	Black	Wilcom
4.	9		13,817	9	White	Default
5.	3		18,682	13	Black	Wilcom
6.	2		2,708	9	Orange	Wilcom
7.	3		1,010	13	Black	Wilcom
8.	9		13,817	9	White	Default
9.	3		8,192	13	Black	Wilcom