



Creative Fabrica

**Embroidery Design
Sewing Information**

www.creativefabrica.com/embroidery/

© Creative Fabrica

Production Worksheet

Wilcom TrueSizer



Design: **Map**

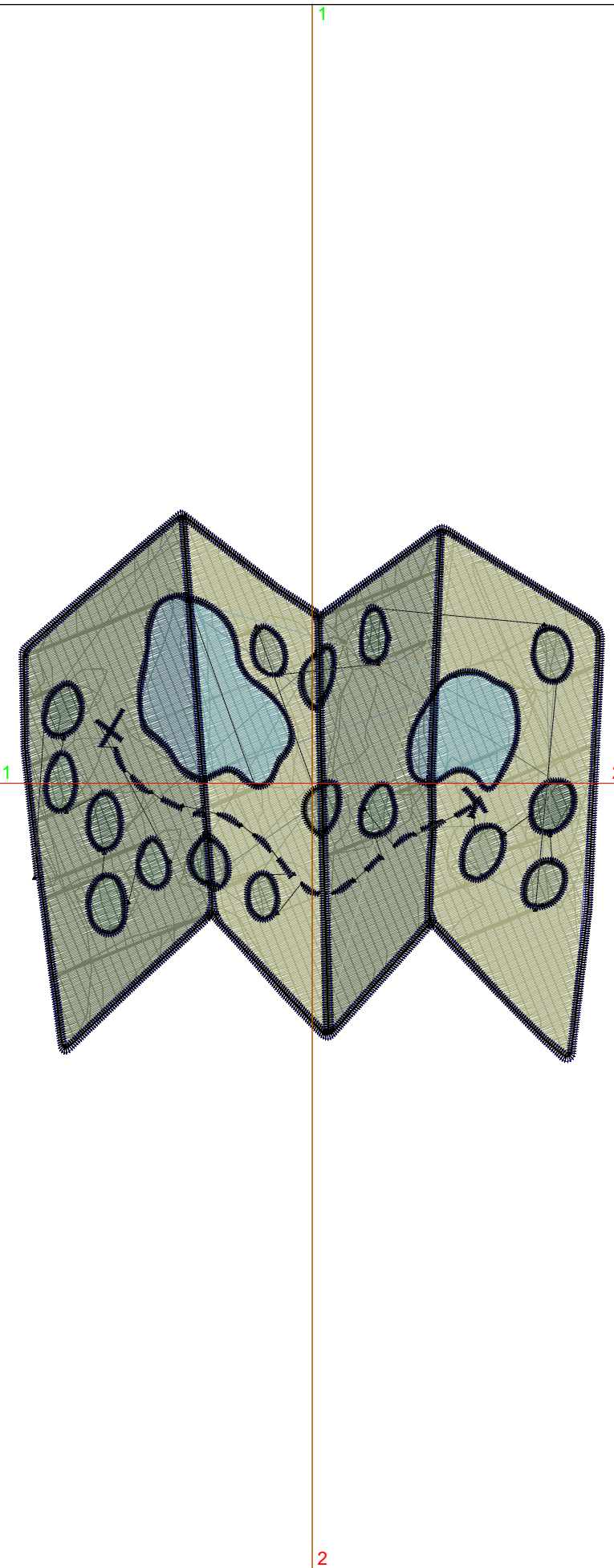
Title: **Map**

Stitches: 23,695
 Height: 3.59 in
 Width: 3.80 in
 Colors: 8
 Colorway: Colorway 1
 Zoom: 1:1

Machine format: Tajima
 Color changes: 7
 Stops: 8
 Trims: 48
 Auto fabric: Custom Fabric
 Required stabilizer: Topping:
 Backing: Tear Away x 2
 Appliqués: 0
 Left: 48.3 mm
 Right: 48.2 mm
 Up: 45.1 mm
 Down: 46.1 mm
 EndX: 0.00 in
 EndY: 0.00 in
 Area: 13.65 in²
 Max stitch: 8.7 mm
 Min stitch: 0.3 mm
 Max jump: 7.0 mm
 Total thread: 394.02ft
 Total bobbin: 139.80ft

Stop Sequence:

#	#	Color	St.	Code	Name	Chart
1.	22		6,014	Mahndi Green	PMS 3435	Madeira Classic 1370
2.	25		5,646	Mahandi Green	PMS 370	Madeira Classic 1170
3.	24		514	Dark Green	PMS 3435	Madeira Classic 1370
4.	23		946	Light Green	PMS 367	Madeira Classic 1049
5.	26		806	Light sea green	PMS 3255	Madeira Classic 1299
6.	8		742	Dark Cyan	PMS 307c	Madeira Classic 1096
7.	7		1,227	Cyan	PMS 3115	Madeira Classic 1093
8.	12		7,798	Black		Madeira Classic 1000



Color Film

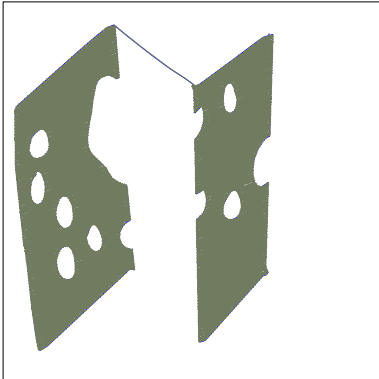
Wilcom TrueSizer



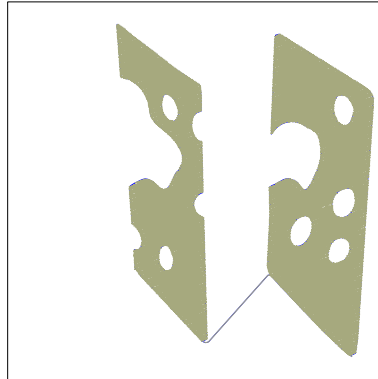
Design: **Map**

Title: **Map**

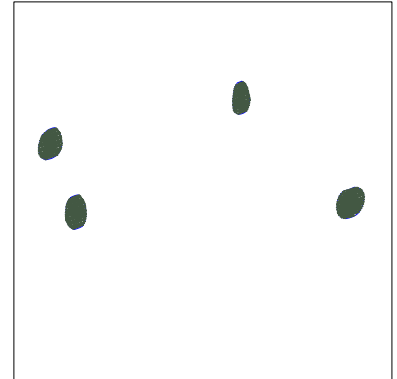
Stitches: 23,695
Height: 3.59 in
Width: 3.80 in
Colors: 8
Colorway: Colorway 1
Zoom: 0.49



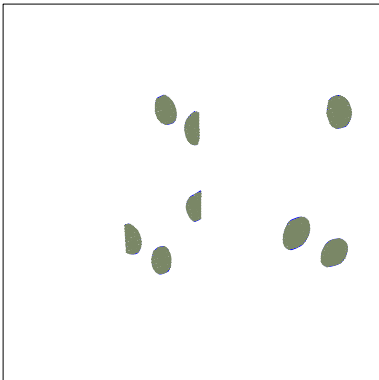
Stop #: 1
Code: Mahndi Green
Name: PMS 3435
Chart: Madeira Classic 1370
Stitches: 6,014
Thread used: 118.07ft



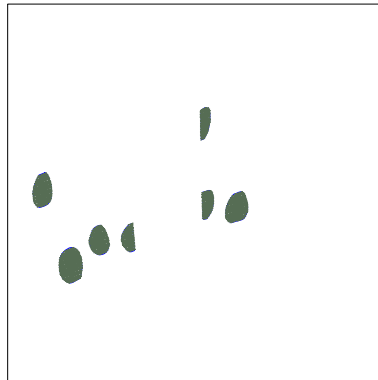
Stop #: 2
Code: Mahndi Green
Name: PMS 370
Chart: Madeira Classic 1170
Stitches: 5,646
Thread used: 107.45ft



Stop #: 3
Code: Dark Green
Name: PMS 3435
Chart: Madeira Classic 1370
Stitches: 514
Thread used: 8.12ft



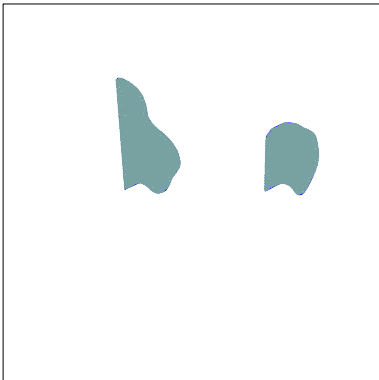
Stop #: 4
Code: Light Green
Name: PMS 367
Chart: Madeira Classic 1049
Stitches: 946
Thread used: 14.19ft



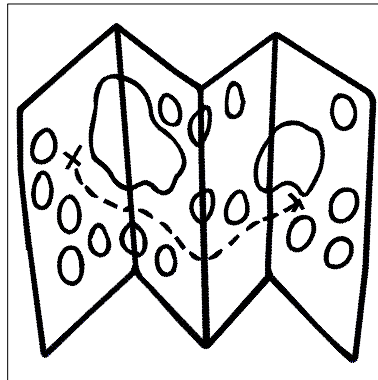
Stop #: 5
Code: Light sea green
Name: PMS 3255
Chart: Madeira Classic 1299
Stitches: 806
Thread used: 11.58ft



Stop #: 6
Code: Dark Cyan
Name: PMS 307c
Chart: Madeira Classic 1096
Stitches: 742
Thread used: 12.96ft



Stop #: 7
Code: Cyan
Name: PMS 3115
Chart: Madeira Classic 1093
Stitches: 1,227
Thread used: 23.00ft



Stop #: 8
Code: Black
Name:
Chart: Madeira Classic 1000
Stitches: 7,798
Thread used: 96.01ft