



Creative Fabrica

**Embroidery Design
Sewing Information**

www.creativefabrica.com/embroidery/

© Creative Fabrica

Production Worksheet

Wilcom EmbroideryStudio - Designing



Design: **3**

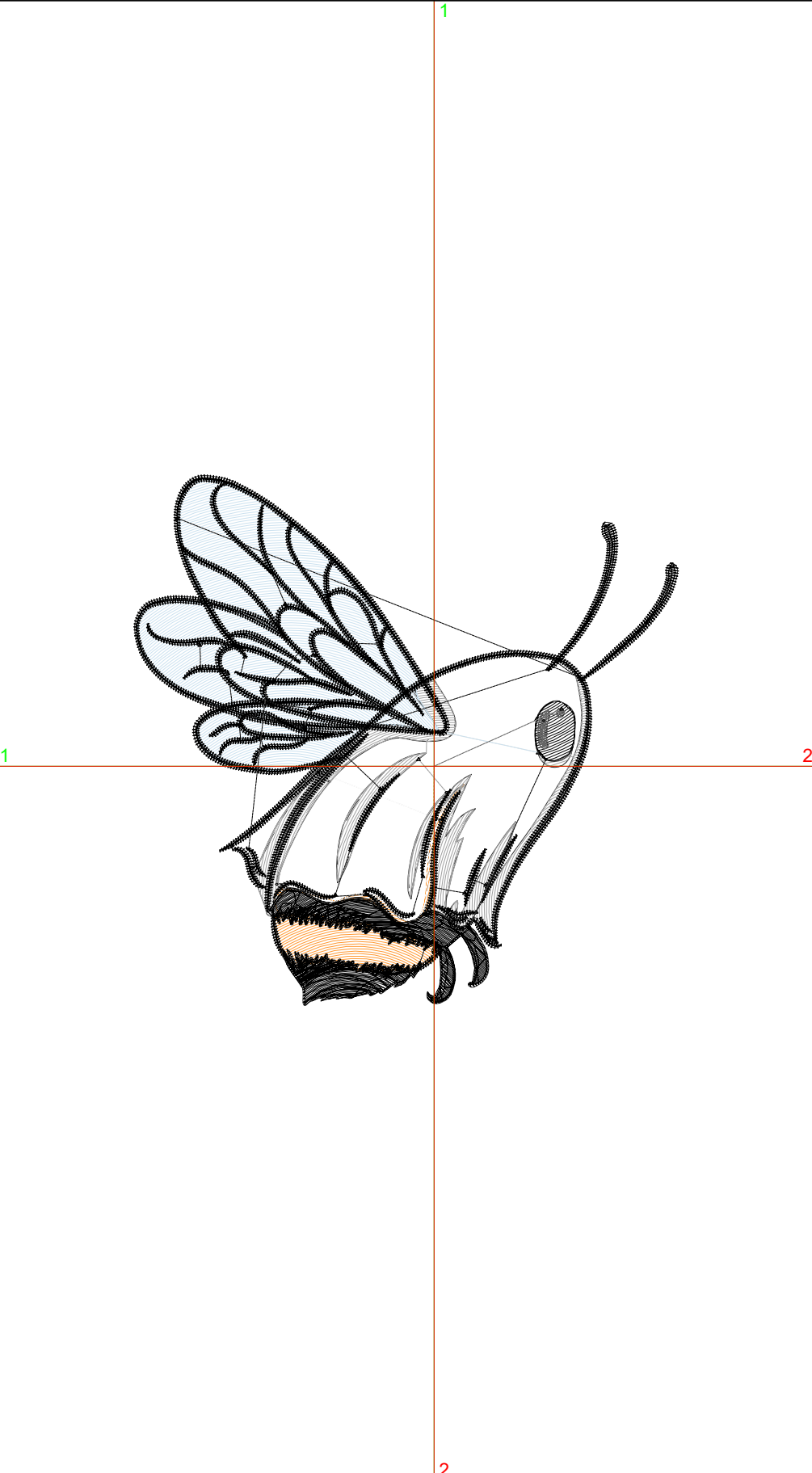
Title:

Stitches: 13,063
 Height: 3.42 in
 Width: 3.51 in
 Colors: 6
 Colorway: Colorway 1
 Zoom: 1:1

Machine format: Tajima
 Color changes: 5
 Stops: 6
 Trims: 32
 Appliqués: 0
 Left: 49.2 mm
 Right: 40.0 mm
 Up: 47.7 mm
 Down: 39.0 mm
 EndX: 0.00 in
 EndY: 0.00 in
 Area: 12.00 in²
 Max stitch: 6.9 mm
 Min stitch: 0.0 mm
 Max jump: 6.9 mm
 Total thread: 174.75ft
 Total bobbin: 51.60ft

Stop Sequence:

#	N#	Color	St.	Code	Name	Chart
1.	12		371	12	Orange	Default
2.	9		1,472	9	White	Default
3.	1		922		R161 G161 B161	
4.	2		1,762		R204 G226 B240	
5.	8		8,451	8	Black	Default
6.	18		83	18	Grey	Default



Production Worksheet

Wilcom EmbroideryStudio - Designing



Design: **4**

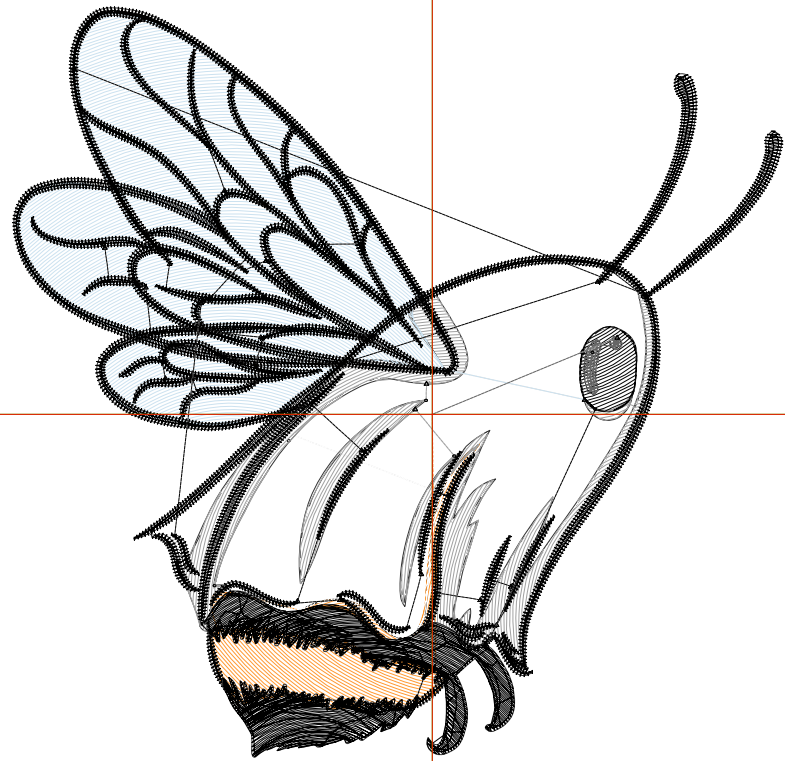
Title:

Stitches: 15,391
Height: 3.91 in
Width: 4.01 in
Colors: 6
Colorway: Colorway 1
Zoom: 1:1

Machine format: Tajima
Color changes: 5
Stops: 6
Trims: 34
Appliqués: 0
Left: 55.5 mm
Right: 46.4 mm
Up: 53.9 mm
Down: 45.3 mm
EndX: 0.00 in
EndY: 0.00 in
Area: 15.68 in²
Max stitch: 7.5 mm
Min stitch: 0.0 mm
Max jump: 6.9 mm
Total thread: 211.44ft
Total bobbin: 64.29ft

Stop Sequence:

#	N#	Color	St.	Code	Name	Chart
1.	12		438	12	Orange	Default
2.	9		1,836	9	White	Default
3.	1		1,068		R161 G161 B161	
4.	2		2,236		R204 G226 B240	
5.	8		9,725	8	Black	Default
6.	18		86	18	Grey	Default



Production Worksheet

Wilcom EmbroideryStudio - Designing



Design: **4**

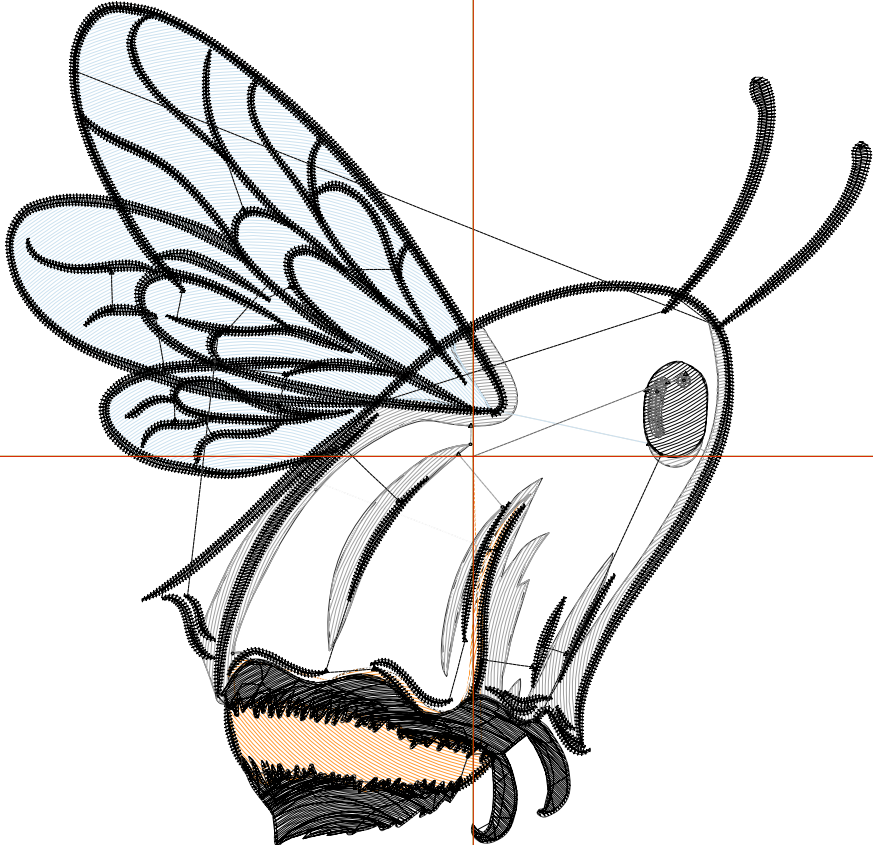
Title:

Stitches: 18,069
 Height: 4.40 in
 Width: 4.51 in
 Colors: 6
 Colorway: Colorway 1
 Zoom: 1:1

Machine format: Tajima
 Color changes: 5
 Stops: 6
 Trims: 35
 Appliqués: 0
 Left: 61.9 mm
 Right: 52.7 mm
 Up: 60.1 mm
 Down: 51.5 mm
 EndX: 0.00 in
 EndY: 0.00 in
 Area: 19.84 in²
 Max stitch: 7.0 mm
 Min stitch: 0.0 mm
 Max jump: 7.0 mm
 Total thread: 253.61ft
 Total bobbin: 78.86ft

Stop Sequence:

#	N#	Color	St.	Code	Name	Chart
1.	12		518	12	Orange	Default
2.	9		2,323	9	White	Default
3.	1		1,267		R161 G161 B161	
4.	2		2,787		R204 G226 B240	
5.	8		11,071	8	Black	Default
6.	18		101	18	Grey	Default



Production Worksheet

Wilcom EmbroideryStudio - Designing



Design: **5**

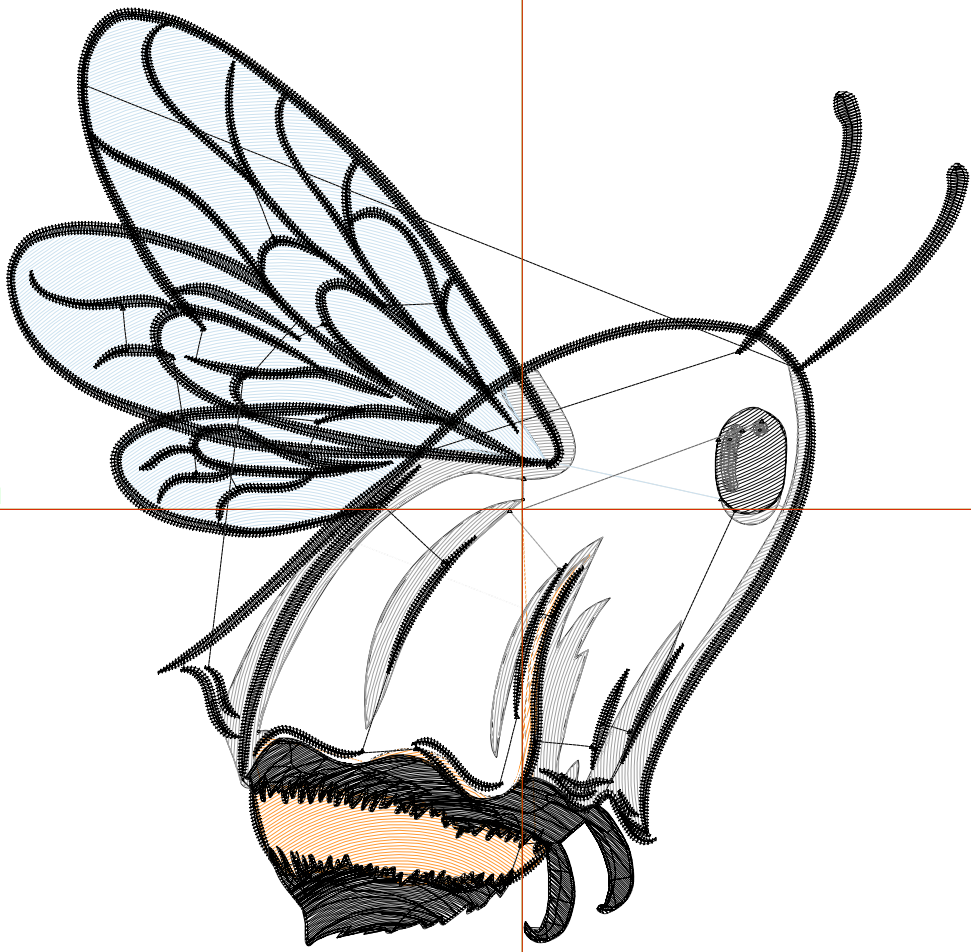
Title:

Stitches: 20,874
 Height: 4.88 in
 Width: 5.01 in
 Colors: 6
 Colorway: Colorway 1
 Zoom: 1:1

Machine format: Tajima
 Color changes: 5
 Stops: 6
 Trims: 36
 Appliqués: 0
 Left: 68.2 mm
 Right: 59.1 mm
 Up: 66.3 mm
 Down: 57.7 mm
 EndX: 0.00 in
 EndY: 0.00 in
 Area: 24.48 in²
 Max stitch: 7.0 mm
 Min stitch: 0.0 mm
 Max jump: 7.0 mm
 Total thread: 299.29ft
 Total bobbin: 95.03ft

Stop Sequence:

#	N#	Color	St.	Code	Name	Chart
1.	12		660	12	Orange	Default
2.	9		2,767	9	White	Default
3.	1		1,489		R161 G161 B161	
4.	2		3,380		R204 G226 B240	
5.	8		12,463	8	Black	Default
6.	18		113	18	Grey	Default



Production Worksheet

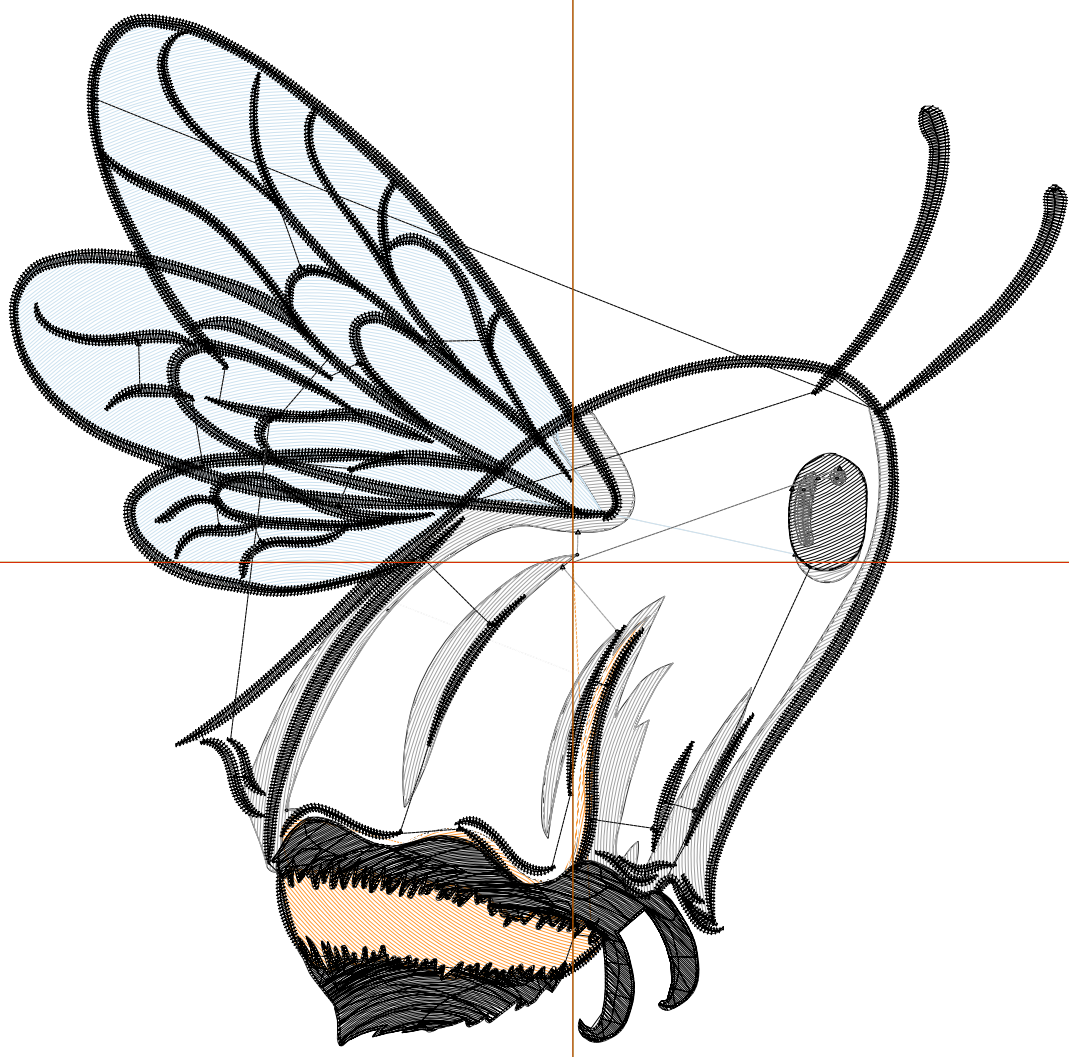
Wilcom EmbroideryStudio - Designing



Design: **5**

Title:

Stitches: 23,777
Height: 5.37 in
Width: 5.51 in
Colors: 6
Colorway: Colorway 1
Zoom: 1:1



Production Worksheet

Wilcom EmbroideryStudio - Designing



Design: **5**

Title:

Stitches: 23,777
 Height: 5.37 in
 Width: 5.51 in
 Colors: 6
 Colorway: Colorway 1
 Zoom: 1:1

Machine format: Tajima
 Color changes: 5
 Stops: 6
 Trims: 37
 Appliqués: 0
 Left: 74.6 mm
 Right: 65.4 mm
 Up: 72.5 mm
 Down: 63.9 mm
 EndX: 0.00 in
 EndY: 0.00 in
 Area 29.61 in²
 Max stitch: 6.9 mm
 Min stitch: 0.0 mm
 Max jump: 6.9 mm
 Total thread: 348.23ft
 Total bobbin: 112.74ft

Stop Sequence:

#	N#	Color	St.	Code	Name	Chart
1.	12		698	12	Orange	Default
2.	9		3,296	9	White	Default
3.	1		1,734		R161 G161 B161	
4.	2		4,023		R204 G226 B240	
5.	8		13,901	8	Black	Default
6.	18		123	18	Grey	Default

Production Worksheet

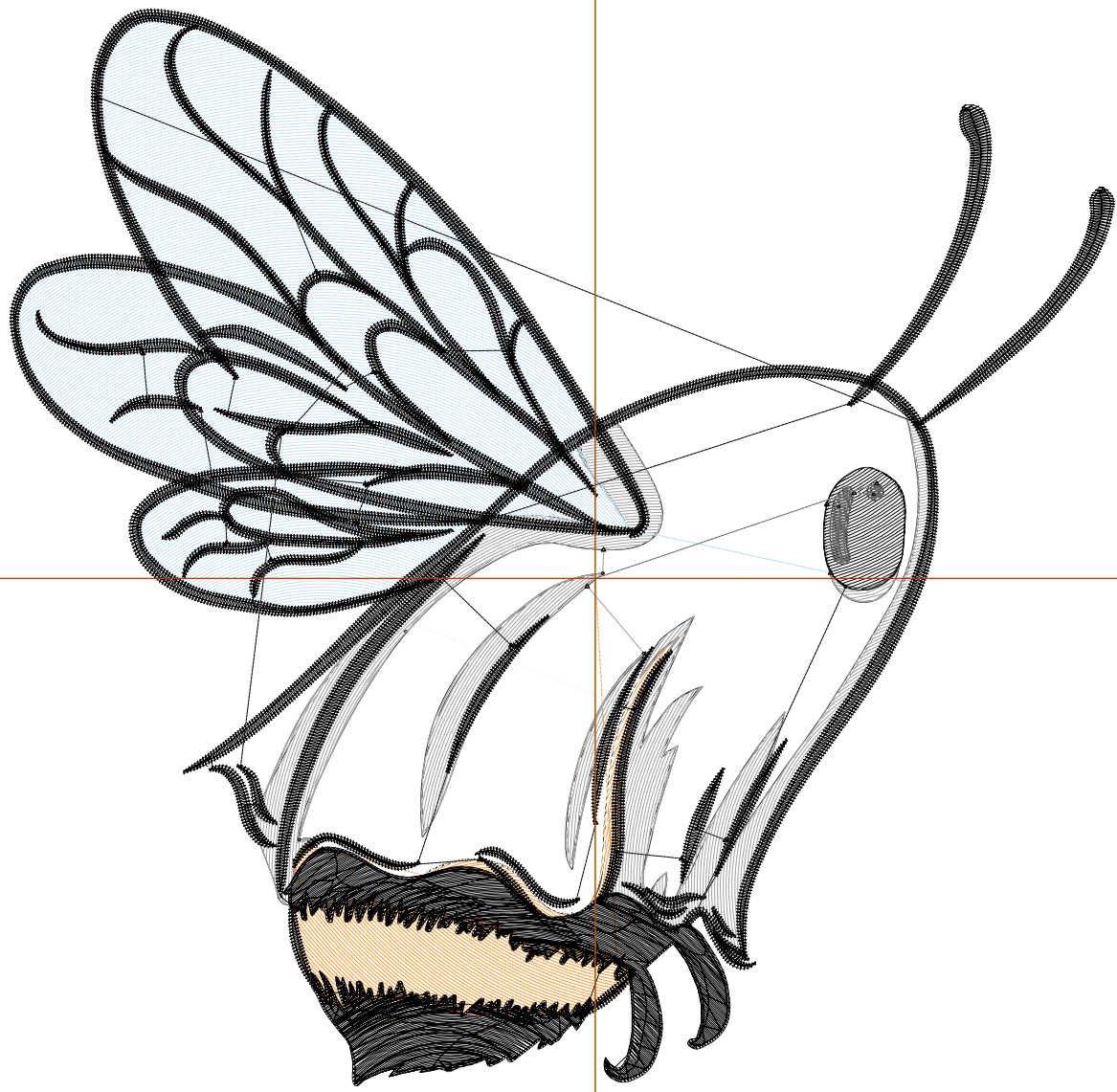
Wilcom EmbroideryStudio - Designing



Design: **6**

Title:

Stitches: 26,550
Height: 5.86 in
Width: 6.01 in
Colors: 6
Colorway: Colorway 1
Zoom: 1:1



Production Worksheet

Wilcom EmbroideryStudio - Designing



Design: **6**

Title:

Stitches: 26,550
 Height: 5.86 in
 Width: 6.01 in
 Colors: 6
 Colorway: Colorway 1
 Zoom: 1:1

Machine format: Tajima
 Color changes: 5
 Stops: 6
 Trims: 37
 Appliqués: 0
 Left: 80.9 mm
 Right: 71.8 mm
 Up: 78.7 mm
 Down: 70.1 mm
 EndX: 0.00 in
 EndY: 0.00 in
 Area 35.24 in²
 Max stitch: 7.0 mm
 Min stitch: 0.0 mm
 Max jump: 7.0 mm
 Total thread: 396.62ft
 Total bobbin: 130.63ft

Stop Sequence:

#	N#	Color	St.	Code	Name	Chart
1.	12		766	12	Orange	Default
2.	9		3,686	9	White	Default
3.	1		2,012		R161 G161 B161	
4.	2		4,745		R204 G226 B240	
5.	8		15,209	8	Black	Default
6.	18		130	18	Grey	Default

Production Worksheet

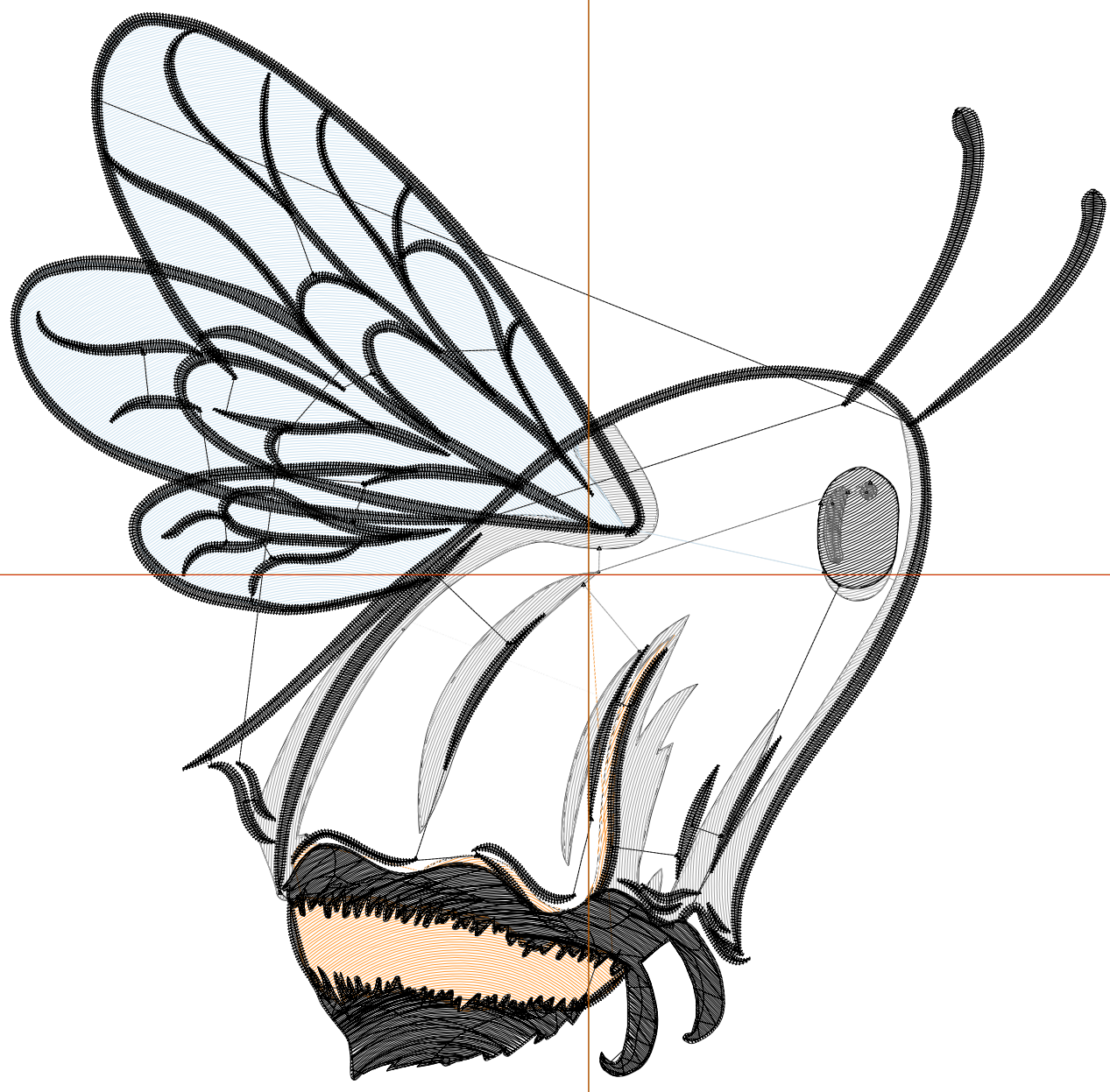
Wilcom EmbroideryStudio - Designing



Design: **6**

Title:

Stitches: 29,889
Height: 6.35 in
Width: 6.51 in
Colors: 6
Colorway: Colorway 1
Zoom: 1:1



Production Worksheet

Wilcom EmbroideryStudio - Designing



Design: **6**

Title:

Stitches: 29,889
 Height: 6.35 in
 Width: 6.51 in
 Colors: 6
 Colorway: Colorway 1
 Zoom: 1:1

Machine format: Tajima
 Color changes: 5
 Stops: 6
 Trims: 39
 Appliqués: 0
 Left: 87.3 mm
 Right: 78.1 mm
 Up: 84.9 mm
 Down: 76.3 mm
 EndX: 0.00 in
 EndY: 0.00 in
 Area 41.34 in²
 Max stitch: 6.9 mm
 Min stitch: 0.0 mm
 Max jump: 6.9 mm
 Total thread: 452.93ft
 Total bobbin: 151.02ft

Stop Sequence:

#	N#	Color	St.	Code	Name	Chart
1.	12		1,006	12	Orange	Default
2.	9		4,349	9	White	Default
3.	1		2,189		R161 G161 B161	
4.	2		5,522		R204 G226 B240	
5.	8		16,679	8	Black	Default
6.	18		142	18	Grey	Default

Production Worksheet

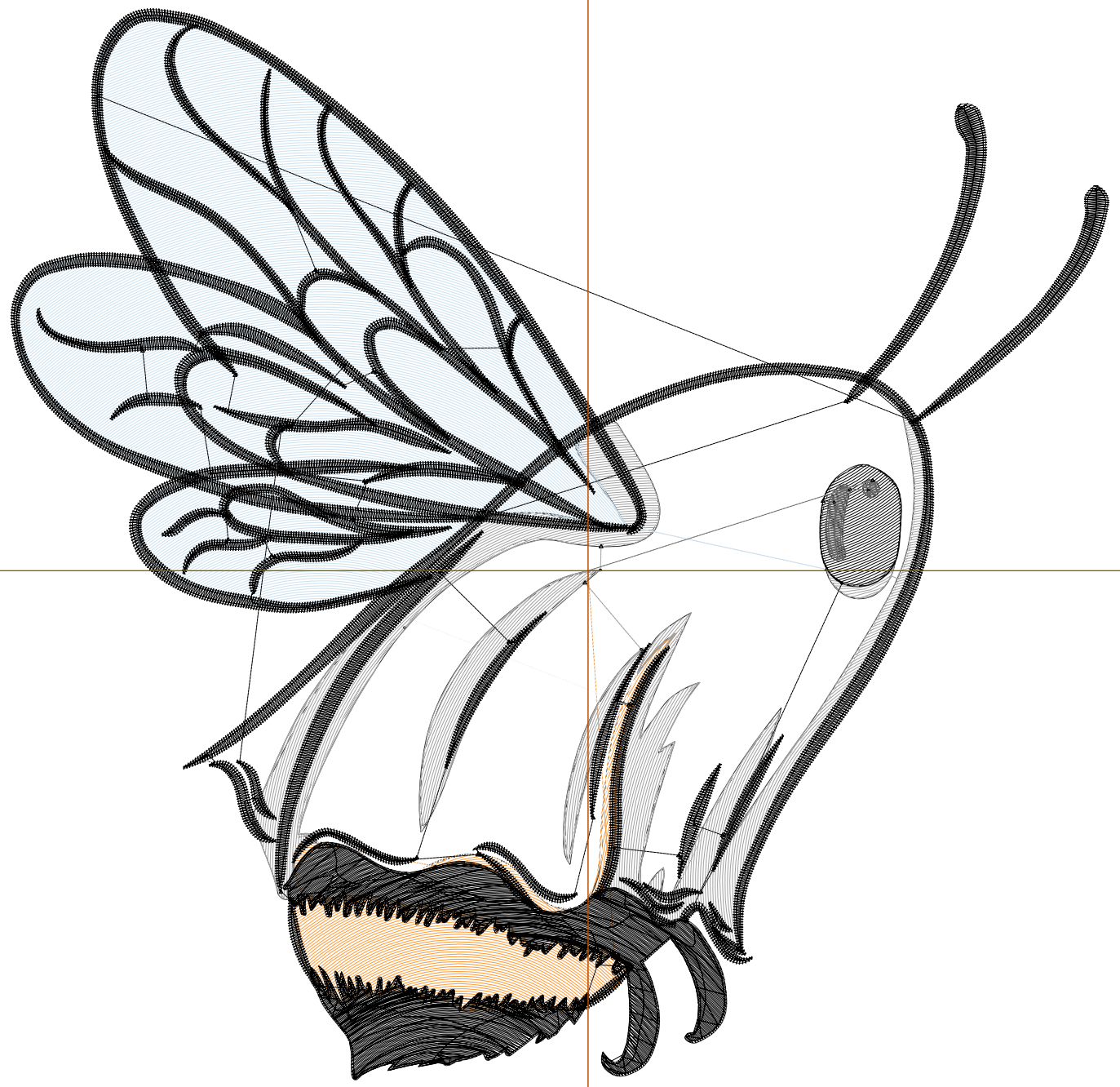
Wilcom EmbroideryStudio - Designing



Design: **7**

Title:

Stitches: 33,332
Height: 6.84 in
Width: 7.01 in
Colors: 6
Colorway: Colorway 1
Zoom: 1:1



Production Worksheet

Wilcom EmbroideryStudio - Designing



Design: **7**

Title:

Stitches: 33,332
 Height: 6.84 in
 Width: 7.01 in
 Colors: 6
 Colorway: Colorway 1
 Zoom: 1:1

Machine format: Tajima
 Color changes: 5
 Stops: 6
 Trims: 40
 Appliqués: 0
 Left: 93.6 mm
 Right: 84.5 mm
 Up: 91.1 mm
 Down: 82.5 mm
 EndX: 0.00 in
 EndY: 0.00 in
 Area 47.93 in²
 Max stitch: 7.0 mm
 Min stitch: 0.0 mm
 Max jump: 7.0 mm
 Total thread: 513.13ft
 Total bobbin: 173.30ft

Stop Sequence:

#	N#	Color	St.	Code	Name	Chart
1.	12		1,153	12	Orange	Default
2.	9		4,973	9	White	Default
3.	1		2,553		R161 G161 B161	
4.	2		6,364		R204 G226 B240	
5.	8		18,137	8	Black	Default
6.	18		150	18	Grey	Default

Production Worksheet

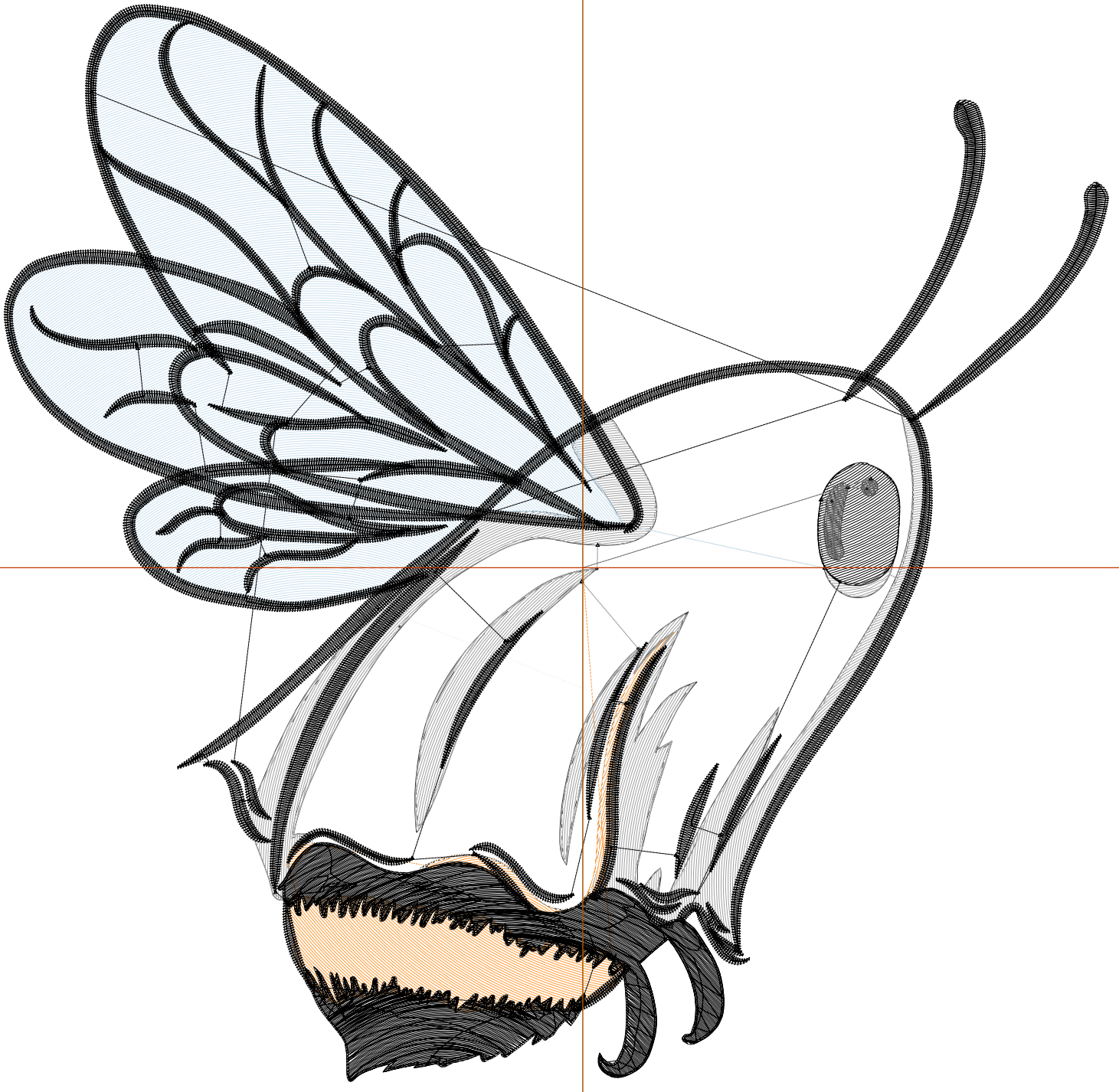
Wilcom EmbroideryStudio - Designing



Design: **7**

Title:

Stitches: 36,625
Height: 7.32 in
Width: 7.51 in
Colors: 6
Colorway: Colorway 1
Zoom: 1:1



Production Worksheet

Wilcom EmbroideryStudio - Designing



Design: **7**

Title:

Stitches: 36,625
 Height: 7.32 in
 Width: 7.51 in
 Colors: 6
 Colorway: Colorway 1
 Zoom: 1:1

Machine format: Tajima
 Color changes: 5
 Stops: 6
 Trims: 40
 Appliqués: 0
 Left: 100.0 mm
 Right: 90.8 mm
 Up: 97.3 mm
 Down: 88.7 mm
 EndX: 0.00 in
 EndY: 0.00 in
 Area 55.02 in²
 Max stitch: 7.0 mm
 Min stitch: 0.0 mm
 Max jump: 7.0 mm
 Total thread: 573.47ft
 Total bobbin: 196.26ft

Stop Sequence:

#	N#	Color	St.	Code	Name	Chart
1.	12		1,143	12	Orange	Default
2.	9		5,588	9	White	Default
3.	1		2,816		R161 G161 B161	
4.	2		7,270		R204 G226 B240	
5.	8		19,646	8	Black	Default
6.	18		160	18	Grey	Default