



# **Creative Fabrica**

**Embroidery Design  
Sewing Information**

**[www.creativefabrica.com/embroidery/](http://www.creativefabrica.com/embroidery/)**

© Creative Fabrica

**Approval Sheet**

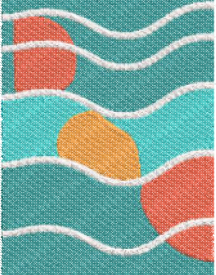
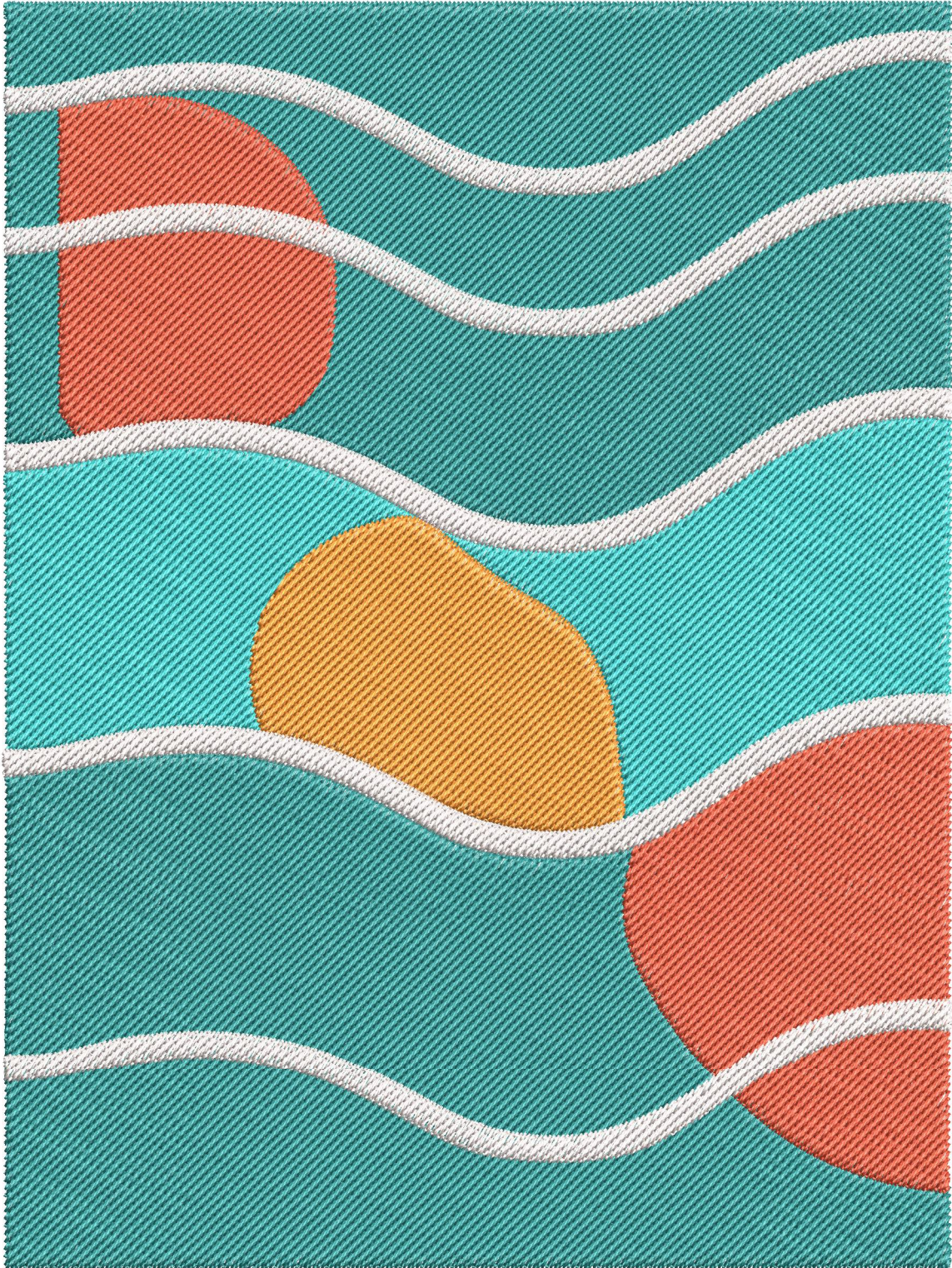
Wilcom EmbroideryStudio - Designing

**\*DESIGN111\***

Design: **Design111**

Title:

Height: 8.01 in  
Width: 6.00 in  
Colors: 5  
Colorway: Colorway 1  
Zoom: 0.99



Product type:  
Product:  
Total qty:  
Product colors:  
Position:

Terms and Conditions:

**Approved By:**

**Date:**

# Production Summary

Wilcom EmbroideryStudio - Designing

## \*DESIGN111\*

Design: **Design111**

Title:

Stitches: 41,187  
 Height: 8.01 in  
 Width: 6.00 in  
 Colors: 5



Machine format: Tajima  
 Color changes: 5  
 Stops: 6  
 Trims: 11  
 Hoop: <None>  
 Max stitch: 6.9 mm  
 Min stitch: 0.2 mm  
 Max jump: 6.9 mm

Left: 101.8 mm  
 Right: 50.7 mm  
 Up: 82.4 mm  
 Down: 121.1 mm  
 EndX: -1.07 in  
 EndY: -4.03 in  
 Area: 48.10 in<sup>2</sup>  
 Total thread: 926.11ft  
 Total bobbin: 387.49ft

Colorway			Colorway 1
Background			
Product			Blanks\Blank
Stop	Color	Stitches	
1	3	20,787	R37 G148 B148
2	2	2,356	R237 G85 B59
3	5	5,559	5 Aqua Default
4	12	2,356	12 Orange Default
5	2	3,205	R237 G85 B59
6	9	6,922	9 White Default

**Approval Sheet**

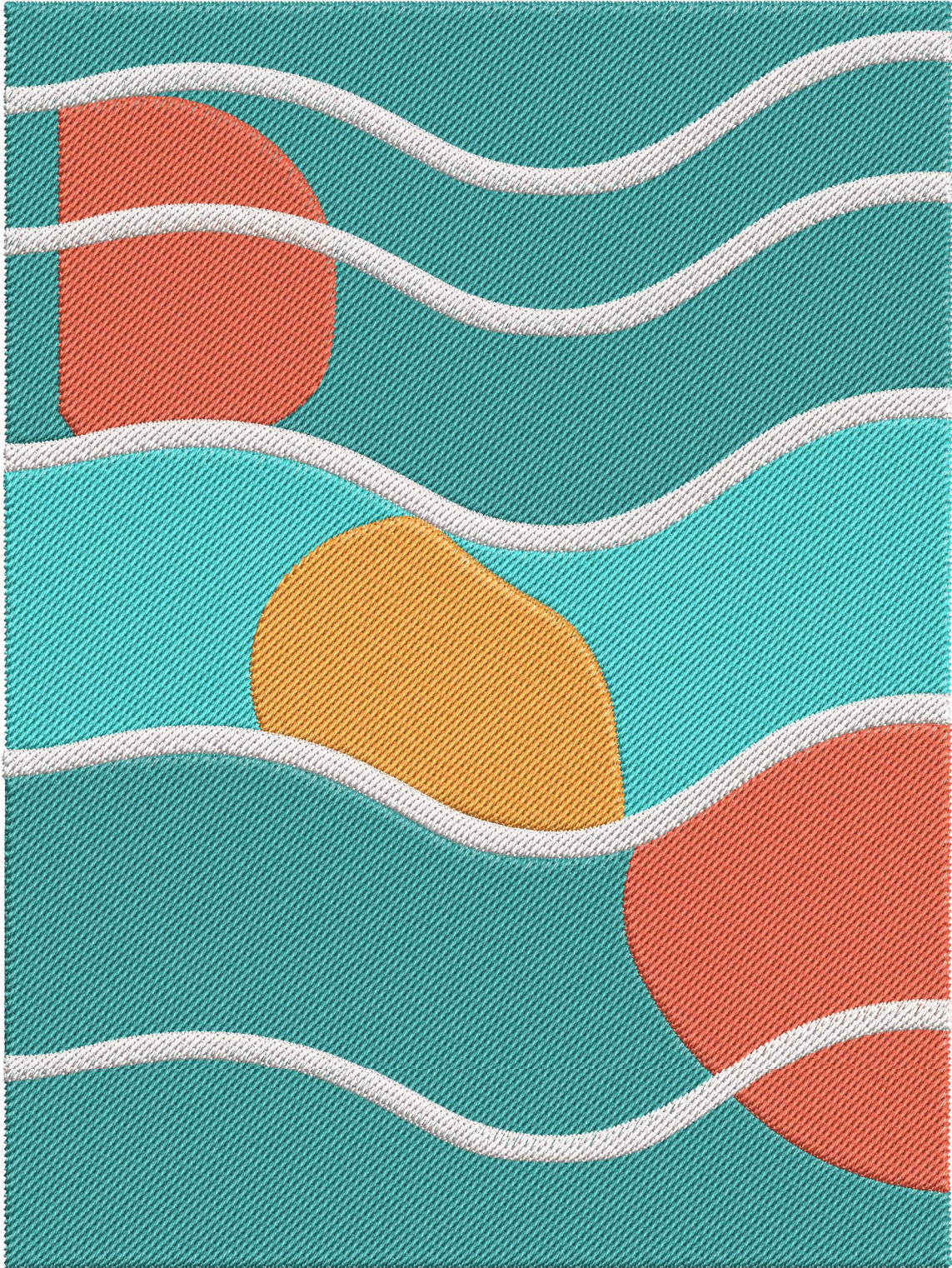
Wilcom EmbroideryStudio - Designing

**\*DESIGN111\***

Design: **Design111**

Title:

Height: 9.01 in  
Width: 6.75 in  
Colors: 5  
Colorway: Colorway 1  
Zoom: 0.88



Product type:  
Product:  
Total qty:  
Product colors:  
Position:

**Terms and Conditions:**

**Approved By:**

**Date:**

# Production Summary

Wilcom EmbroideryStudio - Designing

## \*DESIGN111\*

Design: **Design111**

Title:

Stitches: 51,008  
 Height: 9.01 in  
 Width: 6.75 in  
 Colors: 5



Machine format: Tajima  
 Color changes: 5  
 Stops: 6  
 Trims: 11  
 Hoop: <None>  
 Max stitch: 7.0 mm  
 Min stitch: 0.2 mm  
 Max jump: 7.0 mm

Left: 114.6 mm  
 Right: 57.0 mm  
 Up: 92.7 mm  
 Down: 136.2 mm  
 EndX: -1.21 in  
 EndY: -4.53 in  
 Area: 60.86 in<sup>2</sup>  
 Total thread: 1160.33ft  
 Total bobbin: 488.10ft

Colorway			Colorway 1
Background			
Product			Blanks\Blank
Stop	Color	Stitches	
1	3	26,031	R37 G148 B148
2	2	2,935	R237 G85 B59
3	5	6,885	5 Aqua Default
4	12	2,932	12 Orange Default
5	2	3,997	R237 G85 B59
6	9	8,226	9 White Default

**Approval Sheet**

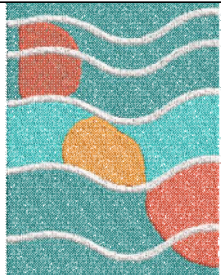
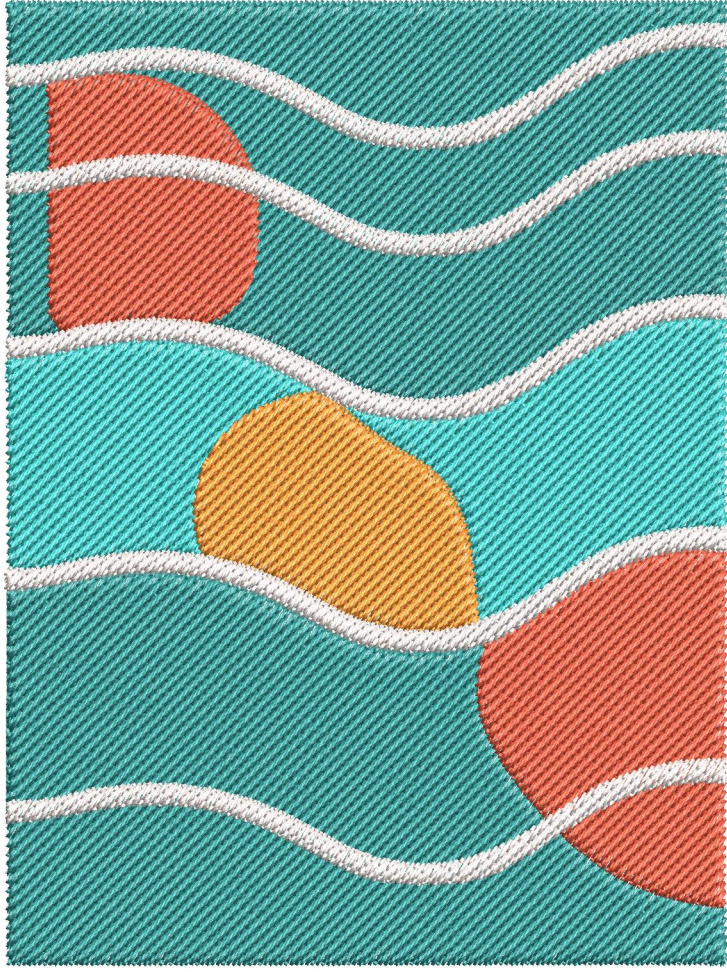
Wilcom EmbroideryStudio - Designing

**\*DESIGN111\***

Design: **Design111**

Title:

Height: 5.01 in  
Width: 3.76 in  
Colors: 5  
Colorway: Colorway 1  
Zoom: 1:1



Product type:  
Product:  
Total qty:  
Product colors:  
Position:

**Terms and Conditions:**

**Approved By:**  
\_\_\_\_\_

**Date:**  
\_\_\_\_\_

# Production Summary

Wilcom EmbroideryStudio - Designing

## \*DESIGN111\*

Design: **Design111**

Title:

Stitches: 18,158  
 Height: 5.01 in  
 Width: 3.76 in  
 Colors: 5



Machine format: Tajima  
 Color changes: 5  
 Stops: 6  
 Trims: 11  
 Hoop: <None>  
 Max stitch: 6.9 mm  
 Min stitch: 0.4 mm  
 Max jump: 6.9 mm

Left: 63.5 mm  
 Right: 31.9 mm  
 Up: 51.7 mm  
 Down: 75.6 mm  
 EndX: -0.66 in  
 EndY: -2.51 in  
 Area: 18.82 in<sup>2</sup>  
 Total thread: 383.81ft  
 Total bobbin: 155.67ft

Colorway			Colorway 1
Background			
Product			Blanks\Blank
Stop	Color	Stitches	
1	3	8,563	R37 G148 B148
2	2	1,017	R237 G85 B59
3	5	2,431	5 Aqua Default
4	12	1,030	12 Orange Default
5	2	1,353	R237 G85 B59
6	9	3,762	9 White Default

**Approval Sheet**

Wilcom EmbroideryStudio - Designing

**\*DESIGN111\***

Design: **Design111**

Title:

Height: 6.01 in  
Width: 4.51 in  
Colors: 5  
Colorway: Colorway 1  
Zoom: 1:1



Product type:  
Product:  
Total qty:  
Product colors:  
Position:

**Terms and Conditions:**

**Approved By:**  

---

  
**Date:**

# Production Summary

Wilcom EmbroideryStudio - Designing

## \*DESIGN111\*

Design: **Design111**

Title:

Stitches: 24,763  
 Height: 6.01 in  
 Width: 4.51 in  
 Colors: 5



Machine format: Tajima  
 Color changes: 5  
 Stops: 6  
 Trims: 11  
 Hoop: <None>  
 Max stitch: 7.0 mm  
 Min stitch: 0.3 mm  
 Max jump: 7.0 mm

Left: 76.4 mm  
 Right: 38.0 mm  
 Up: 61.8 mm  
 Down: 90.8 mm  
 EndX: -0.80 in  
 EndY: -3.02 in  
 Area: 27.08 in<sup>2</sup>  
 Total thread: 537.62ft  
 Total bobbin: 221.14ft

Colorway			Colorway 1
Background			
Product			Blanks\Blank
Stop	Color	Stitches	
1	3	12,038	R37 G148 B148
2	2	1,395	R237 G85 B59
3	5	3,340	5 Aqua Default
4	12	1,417	12 Orange Default
5	2	1,889	R237 G85 B59
6	9	4,682	9 White Default

# Approval Sheet

Wilcom EmbroideryStudio - Designing

## \*DESIGN111\*

Design: **Design111**

Title:

Height: 7.01 in  
Width: 5.26 in  
Colors: 5  
Colorway: Colorway 1  
Zoom: 1:1



Product type:  
Product:  
Total qty:  
Product colors:  
Position:

Terms and Conditions:

**Approved By:**

**Date:**

# Production Summary

Wilcom EmbroideryStudio - Designing

## \*DESIGN111\*

Design: **Design111**

Title:

Stitches: 32,414  
 Height: 7.01 in  
 Width: 5.26 in  
 Colors: 5



Machine format: Tajima  
 Color changes: 5  
 Stops: 6  
 Trims: 11  
 Hoop: <None>  
 Max stitch: 6.9 mm  
 Min stitch: 0.2 mm  
 Max jump: 6.9 mm

Left: 89.1 mm  
 Right: 44.3 mm  
 Up: 72.1 mm  
 Down: 106.0 mm  
 EndX: -0.93 in  
 EndY: -3.53 in  
 Area: 36.84 in<sup>2</sup>  
 Total thread: 718.57ft  
 Total bobbin: 298.62ft

Colorway			Colorway 1
Background			
Product			Blanks\Blank
Stop	Color	Stitches	
1	3	16,129	R37 G148 B148
2	2	1,839	R237 G85 B59
3	5	4,376	5 Aqua Default
4	12	1,854	12 Orange Default
5	2	2,500	R237 G85 B59
6	9	5,714	9 White Default