



# **Creative Fabrica**

**Embroidery Design  
Sewing Information**

**[www.creativefabrica.com/embroidery/](http://www.creativefabrica.com/embroidery/)**

© Creative Fabrica

# Production Worksheet

Wilcom EmbroideryStudio - Designing

\*4\*




Design: 4

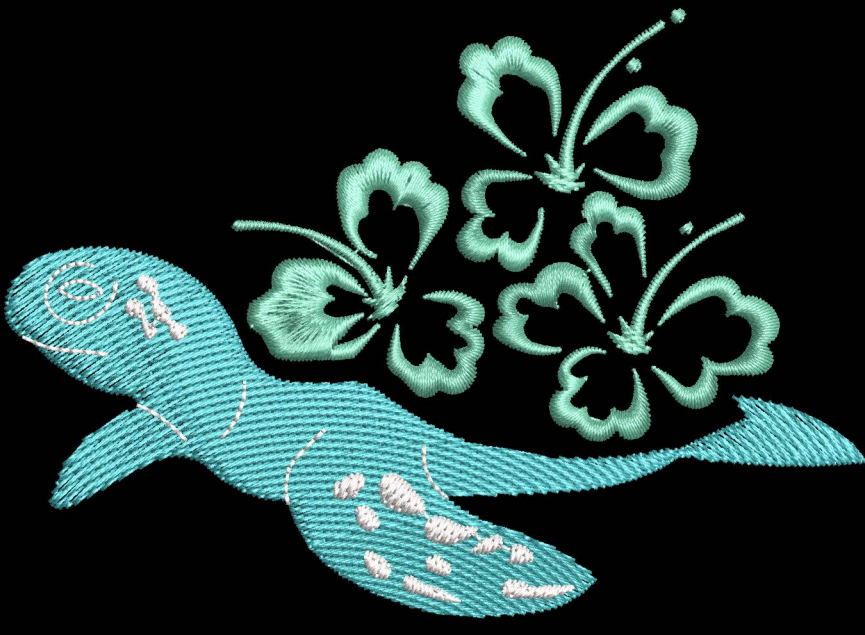
Title:

Stitches: 7,450  
 Height: 3.16 in  
 Width: 4.48 in  
 Colors: 3  
 Colorway: Colorway 1  
 Zoom: 1:1

Machine format: Tajima  
 Color changes: 2  
 Stops: 3  
 Trims: 29  
 Appliqués: 0  
 Left: 58.5 mm  
 Right: 55.4 mm  
 Up: 64.6 mm  
 Down: 15.6 mm  
 EndX: 1.26 in  
 EndY: 1.38 in  
 Area: 14.16 in<sup>2</sup>  
 Max stitch: 11.3 mm  
 Min stitch: 0.2 mm  
 Max jump: 6.9 mm  
 Total thread: 128.62ft  
 Total bobbin: 46.67ft

Stop Sequence:

#	N#	Color	St.	Code	Name	Chart
1.	3		2,701		R69 G195 B204	
2.	9		955	9	White	Default
3.	1		3,792		R107 G204 B172	



# Color Film

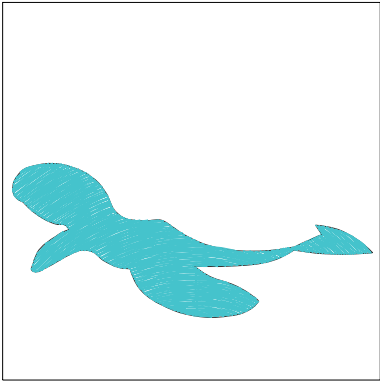
Wilcom EmbroideryStudio - Designing

\*4\*

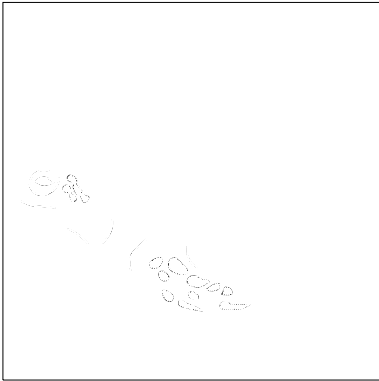
Design: 4

Title:

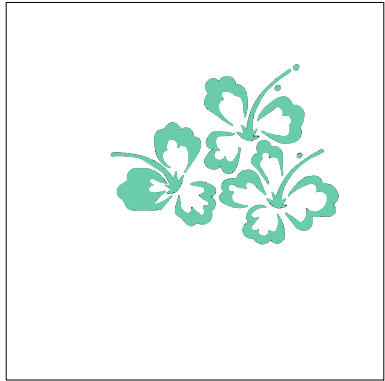
Stitches: 7,450  
Height: 3.16 in  
Width: 4.48 in  
Colors: 3  
Colorway: Colorway 1  
Zoom: 0.42



Stop #: 1  
Element:  
Code:  
Name: R69 G195 B204  
Chart:  
Stitches: 2,701  
Thread used: 54.98ft



Stop #: 2  
Element:  
Code: 9  
Name: White  
Chart: Default  
Stitches: 955  
Thread used: 11.58ft



Stop #: 3  
Element:  
Code:  
Name: R107 G204 B172  
Chart:  
Stitches: 3,792  
Thread used: 61.06ft

# Production Worksheet

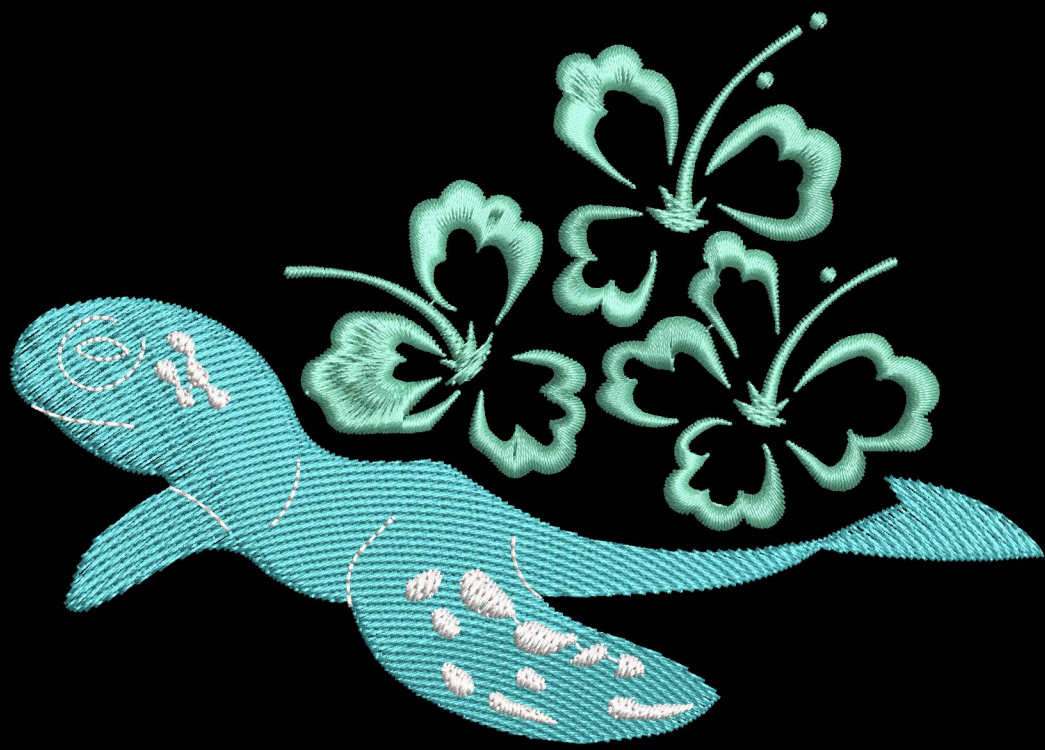
Wilcom EmbroideryStudio - Designing

\*5\*

Design: 5

Title:

Stitches: 9,446  
Height: 3.79 in  
Width: 5.38 in  
Colors: 3  
Colorway: Colorway 1  
Zoom: 1:1



# Production Worksheet

Wilcom EmbroideryStudio - Designing

## \*5\*




Design: **5**

Title:

Stitches: 9,446  
 Height: 3.79 in  
 Width: 5.38 in  
 Colors: 3  
 Colorway: Colorway 1  
 Zoom: 1:1

Machine format: Tajima  
 Color changes: 2  
 Stops: 3  
 Trims: 29  
 Appliqués: 0  
 Left: 70.2 mm  
 Right: 66.5 mm  
 Up: 77.5 mm  
 Down: 18.8 mm  
 EndX: 1.51 in  
 EndY: 1.66 in  
 Area 20.40 in<sup>2</sup>  
 Max stitch: 7.0 mm  
 Min stitch: 0.1 mm  
 Max jump: 6.8 mm  
 Total thread: 173.21ft  
 Total bobbin: 65.33ft

Stop Sequence:

#	N#	Color	St.	Code	Name	Chart
1.	3		3,721		R69 G195 B204	
2.	9		1,091	9	White	Default
3.	1		4,632		R107 G204 B172	

# Color Film

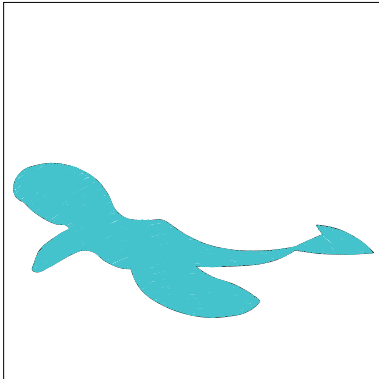
Wilcom EmbroideryStudio - Designing

\*5\*

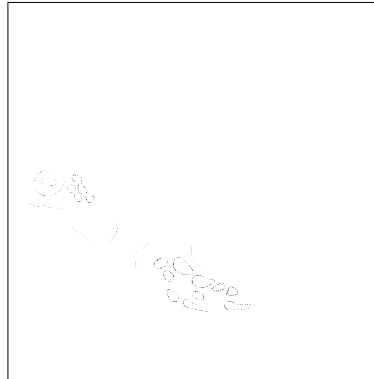
Design: 5

Title:

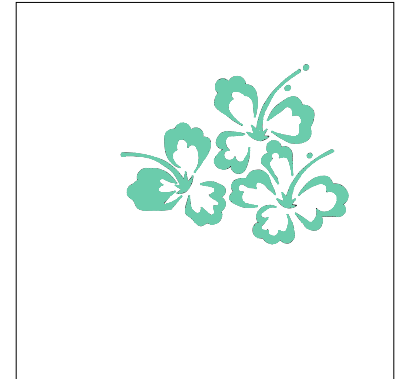
Stitches: 9,446  
Height: 3.79 in  
Width: 5.38 in  
Colors: 3  
Colorway: Colorway 1  
Zoom: 0.35



Stop #: 1  
Element:  
Code:  
Name: R69 G195 B204  
Chart:  
Stitches: 3,721  
Thread used: 77.59ft



Stop #: 2  
Element:  
Code: 9  
Name: White  
Chart: Default  
Stitches: 1,091  
Thread used: 13.97ft



Stop #: 3  
Element:  
Code:  
Name: R107 G204 B172  
Chart:  
Stitches: 4,632  
Thread used: 80.65ft

# Production Worksheet

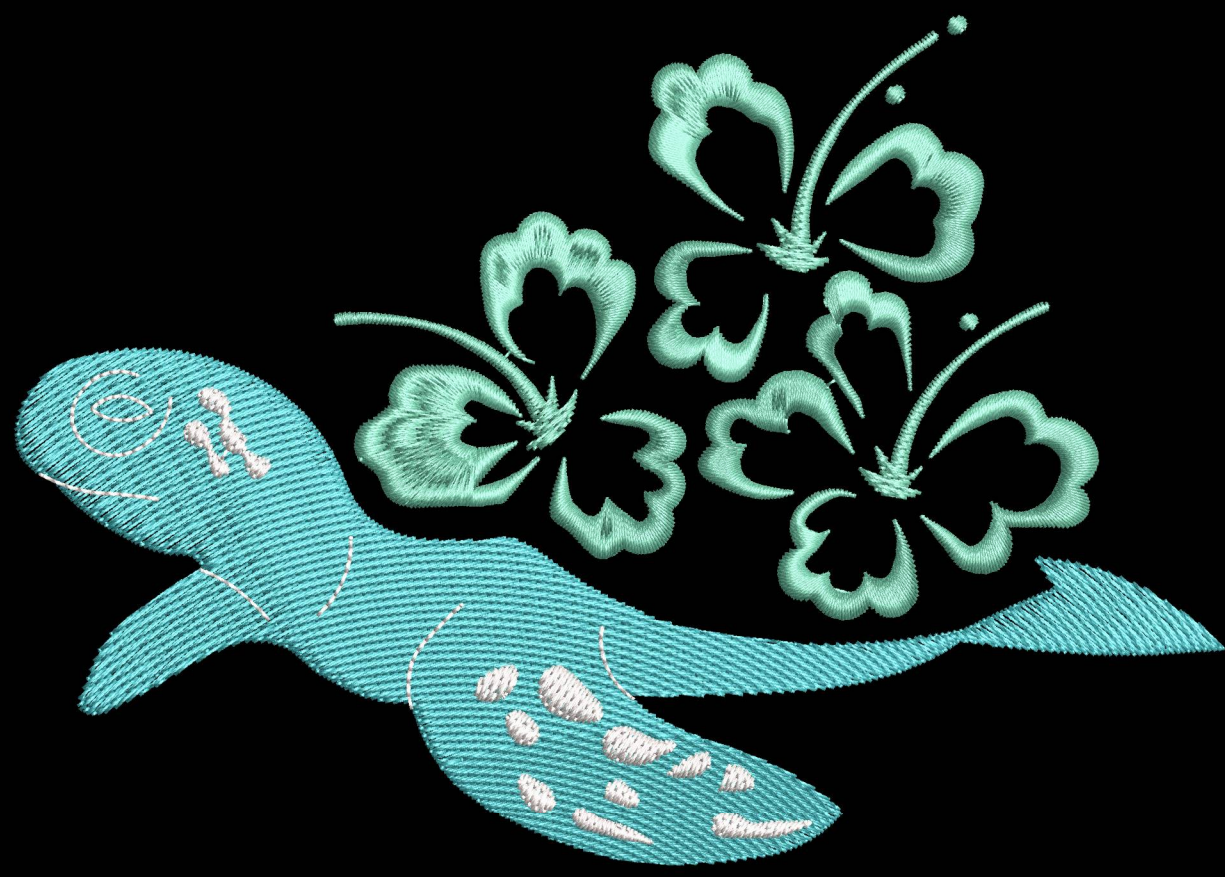
Wilcom EmbroideryStudio - Designing

\*6\*

Design: 6

Title:

Stitches: 11,519  
Height: 4.42 in  
Width: 6.30 in  
Colors: 3  
Colorway: Colorway 1  
Zoom: 1:1



# Production Worksheet

Wilcom EmbroideryStudio - Designing

**\*6\***




Design: **6**

Title:

Stitches: 11,519  
 Height: 4.42 in  
 Width: 6.30 in  
 Colors: 3  
 Colorway: Colorway 1  
 Zoom: 1:1

Machine format: Tajima  
 Color changes: 2  
 Stops: 3  
 Trims: 32  
 Appliqués: 0  
 Left: 81.9 mm  
 Right: 78.2 mm  
 Up: 90.4 mm  
 Down: 21.9 mm  
 EndX: 1.76 in  
 EndY: 1.94 in  
 Area 27.85 in<sup>2</sup>  
 Max stitch: 7.1 mm  
 Min stitch: 0.0 mm  
 Max jump: 6.9 mm  
 Total thread: 222.64ft  
 Total bobbin: 86.56ft

Stop Sequence:

#	N#	Color	St.	Code	Name	Chart
1.	3		4,777		R69 G195 B204	
2.	9		1,254	9	White	Default
3.	1		5,486		R107 G204 B172	

# Color Film

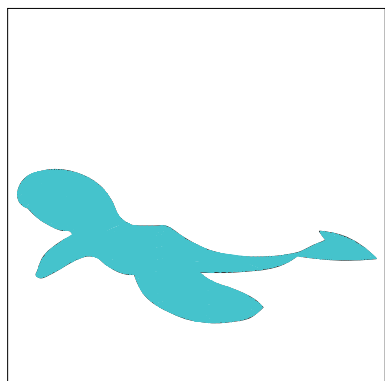
Wilcom EmbroideryStudio - Designing

\*6\*

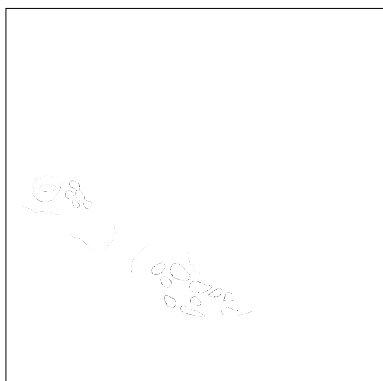
Design: 6

Title:

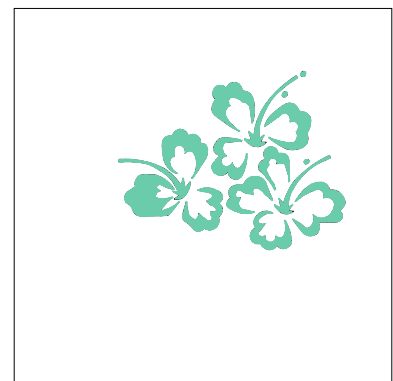
Stitches: 11,519  
Height: 4.42 in  
Width: 6.30 in  
Colors: 3  
Colorway: Colorway 1  
Zoom: 0.30



Stop #: 1  
Element:  
Code:  
Name: R69 G195 B204  
Chart:  
Stitches: 4,777  
Thread used: 102.62ft



Stop #: 2  
Element:  
Code: 9  
Name: White  
Chart: Default  
Stitches: 1,254  
Thread used: 16.78ft



Stop #: 3  
Element:  
Code:  
Name: R107 G204 B172  
Chart:  
Stitches: 5,486  
Thread used: 102.25ft

# Production Worksheet

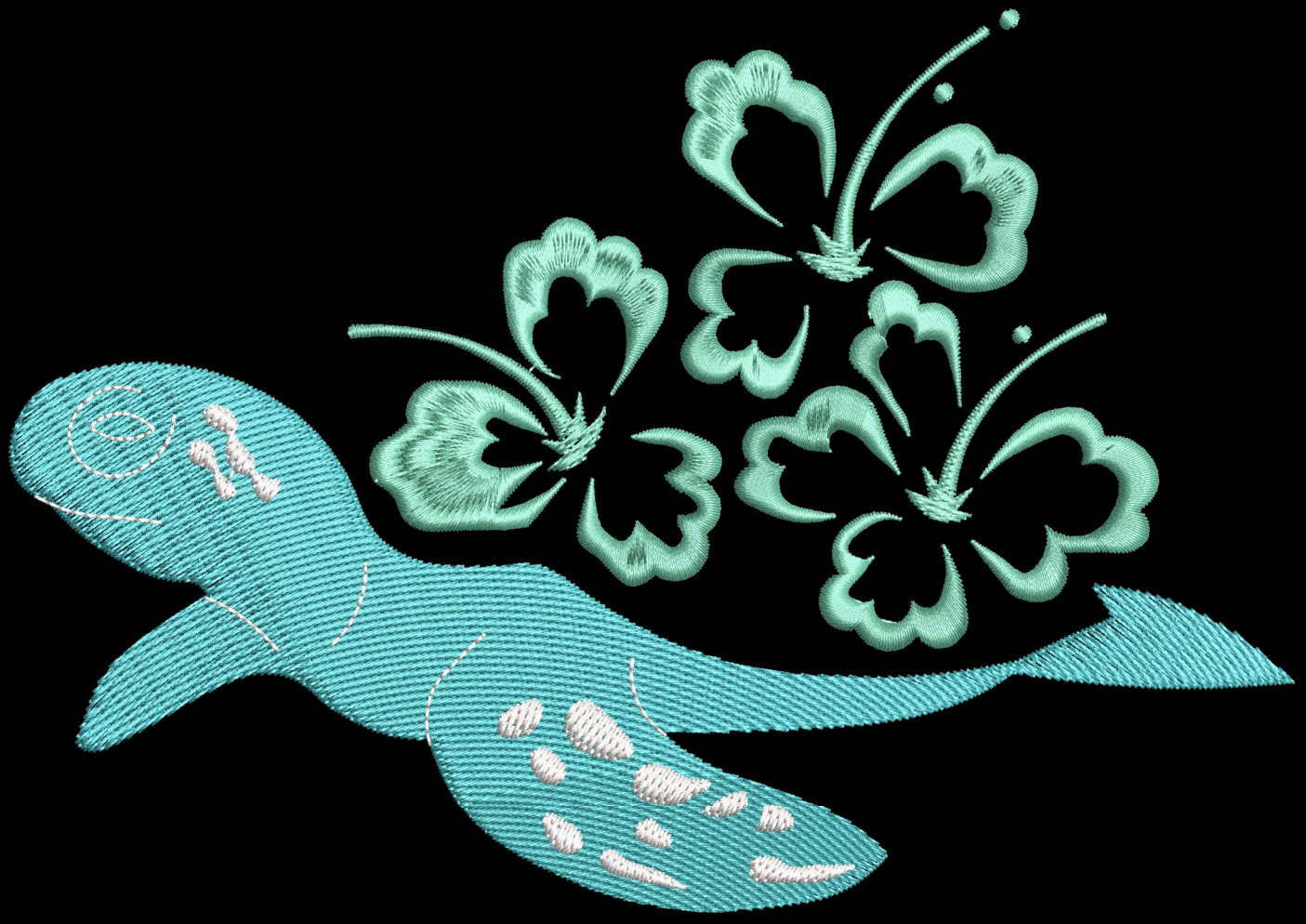
Wilcom EmbroideryStudio - Designing

\*7\*

Design: 7

Title:

Stitches: 13,901  
Height: 5.05 in  
Width: 7.20 in  
Colors: 3  
Colorway: Colorway 1  
Zoom: 1:1



# Production Worksheet

Wilcom EmbroideryStudio - Designing

## \*7\*




Design: **7**

Title:

Stitches: 13,901  
 Height: 5.05 in  
 Width: 7.20 in  
 Colors: 3  
 Colorway: Colorway 1  
 Zoom: 1:1

Machine format: Tajima  
 Color changes: 2  
 Stops: 3  
 Trims: 33  
 Appliqués: 0  
 Left: 93.5 mm  
 Right: 89.4 mm  
 Up: 103.3 mm  
 Down: 25.0 mm  
 EndX: 2.01 in  
 EndY: 2.21 in  
 Area 36.40 in<sup>2</sup>  
 Max stitch: 7.0 mm  
 Min stitch: 0.1 mm  
 Max jump: 7.0 mm  
 Total thread: 279.60ft  
 Total bobbin: 111.06ft

Stop Sequence:

#	N#	Color	St.	Code	Name	Chart
1.	3		6,036		R69 G195 B204	
2.	9		1,405	9	White	Default
3.	1		6,458		R107 G204 B172	

**Color Film**

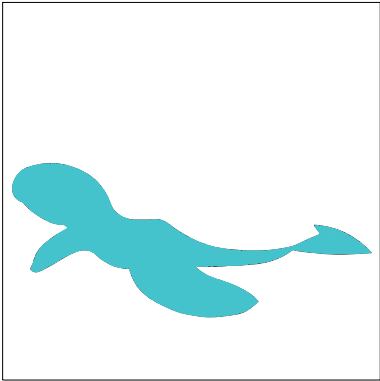
Wilcom EmbroideryStudio - Designing

**\*7\***

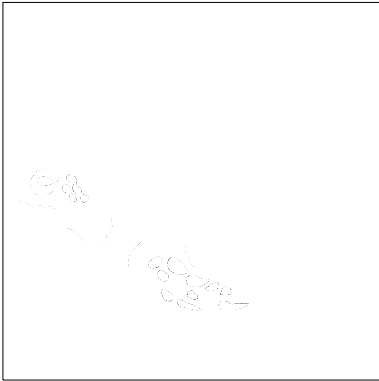
Design: **7**

Title:

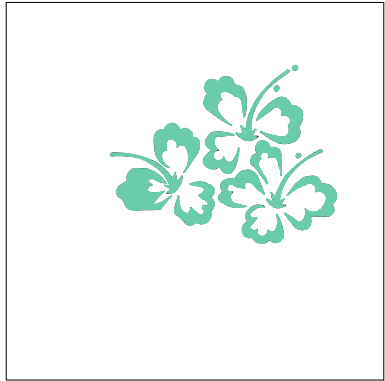
Stitches:	13,901
Height:	5.05 in
Width:	7.20 in
Colors:	3
Colorway:	Colorway 1
Zoom:	0.26



Stop #: 1  
 Element:  
 Code:  
 Name: R69 G195 B204  
 Chart:  
 Stitches: 6,036  
 Thread used: 131.73ft



Stop #: 2  
 Element:  
 Code: 9  
 Name: White  
 Chart: Default  
 Stitches: 1,405  
 Thread used: 19.61ft



Stop #: 3  
 Element:  
 Code:  
 Name: R107 G204 B172  
 Chart:  
 Stitches: 6,458  
 Thread used: 127.27ft