



Creative Fabrica

**Embroidery Design
Sewing Information**

www.creativefabrica.com/embroidery/

© Creative Fabrica

Approval Sheet

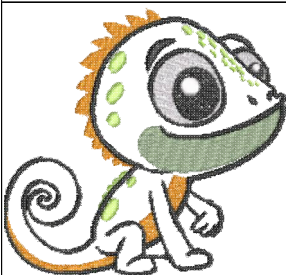
Wilcom EmbroideryStudio - Designing



Design: **chameleon.6x5,65 inch EMB**

Title:

Height: 5.66 in
Width: 6.03 in
Colors: 7
Colorway: Colorway 1
Zoom: 1:1



Product type:
Product:
Total qty:
Product colors:
Position:

Terms and Conditions:

Approved By:

Date:

Production Worksheet

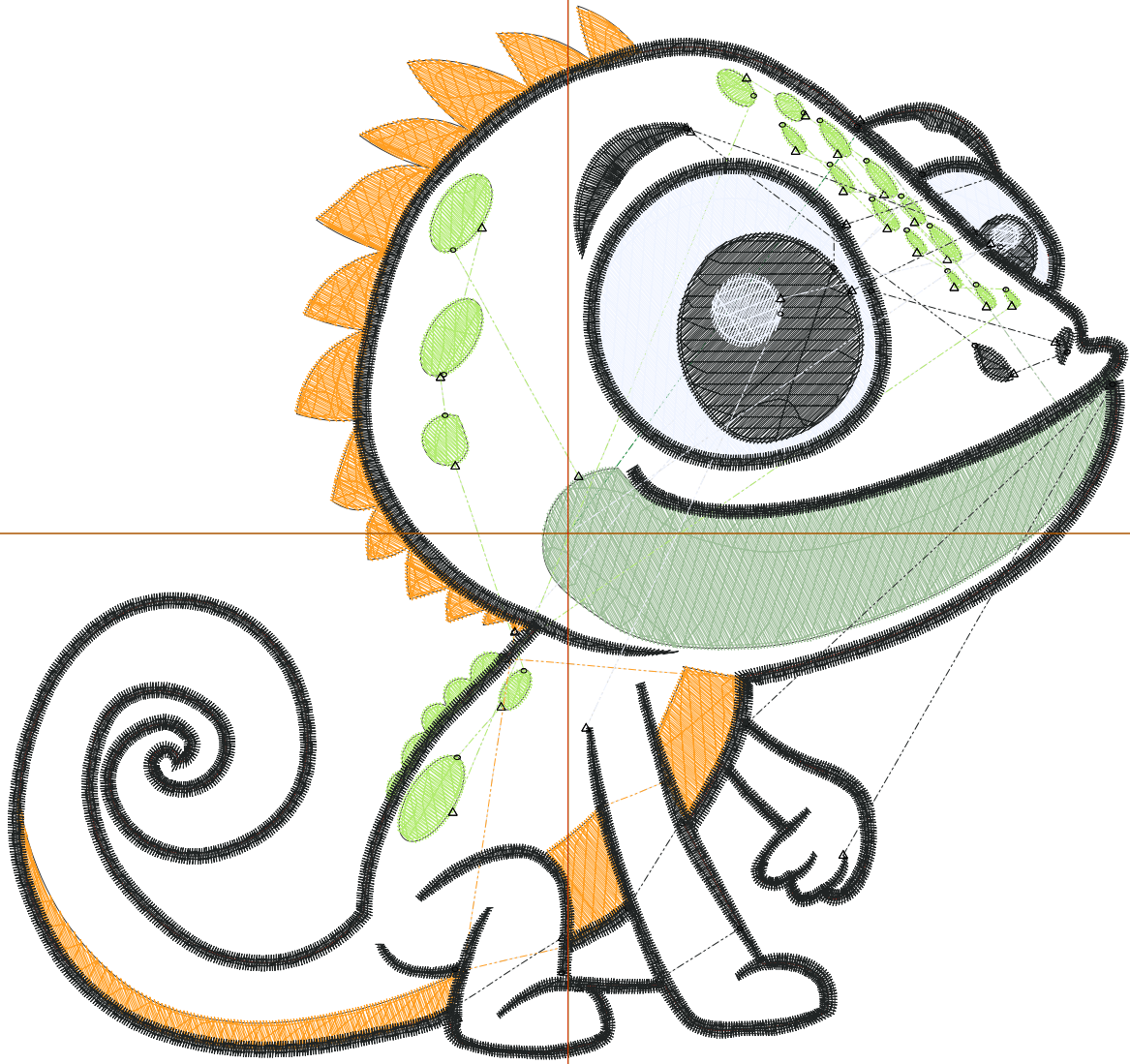
Wilcom EmbroideryStudio - Designing



Design: **chameleon.6x5,65 inch EMB**

Title:

Stitches: 23 115
Height: 5.66 in
Width: 6.03 in
Colors: 7
Colorway: Colorway 1
Zoom: 1:1



Production Worksheet

Wilcom EmbroideryStudio - Designing



Design: **chameleon.6x5,65 inch EMB**

Title:

Stitches: 23 115
 Height: 5.66 in
 Width: 6.03 in
 Colors: 7
 Colorway: Colorway 1
 Zoom: 1:1

Machine format: Tajima
 Color changes: 7
 Stops: 8
 Trims: 46
 Appliqués: 0
 Left: 76.5 mm
 Right: 76.5 mm
 Up: 71.9 mm
 Down: 71.9 mm
 EndX: 0.00 in
 EndY: 0.00 in
 Area 34.11 in²
 Max stitch: 9.4 mm
 Min stitch: 0.0 mm
 Max jump: 7.0 mm
 Total thread: 389.50ft
 Total bobbin: 139.38ft

Stop Sequence:

#	N#	Color	St.	Code	Name	Chart
1.	1		443	1988	Kelly Green	Madeira PolyNeon 40
2.	2		436	1588	Salsa	Madeira PolyNeon 40
3.	3		2 501	1900	Celadon	Madeira PolyNeon 40
4.	4		1 522	1748	Margarita Lime	Madeira PolyNeon 40
5.	5		3 833	1923	Apricot	Madeira PolyNeon 40
6.	6		1 920	1802	Snow White	Madeira PolyNeon 40
7.	7		12 271	1800	Emerald Black	Madeira PolyNeon 40
8.	6		187	1802	Snow White	Madeira PolyNeon 40

Machine runtime:

Machine	Runtime (hr:min:sec)
Machine-1	0:32:16

Color Film

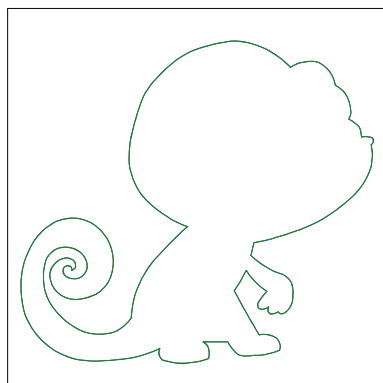
Wilcom EmbroideryStudio - Designing



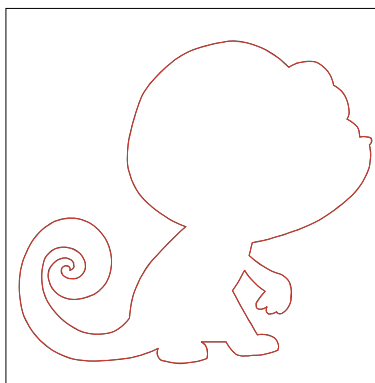
Design: **chameleon.6x5,65 inch EMB**

Title:

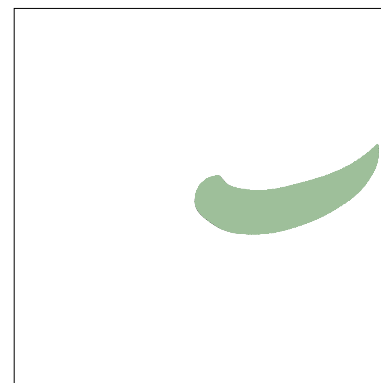
Stitches: 23 115
Height: 5.66 in
Width: 6.03 in
Colors: 7
Colorway: Colorway 1
Zoom: 0.31



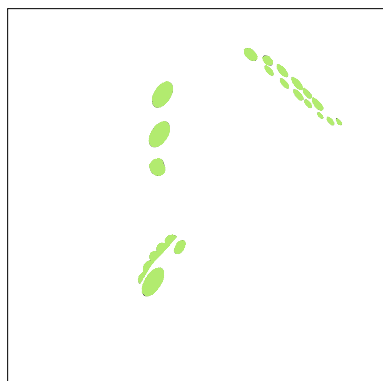
Stop #: 1
Element:
Code: 1988
Name: Kelly Green
Chart: Madeira PolyNeon 40
Stitches: 443
Thread used: 6.65ft



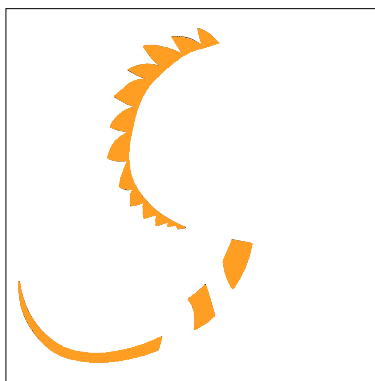
Stop #: 2
Element:
Code: 1588
Name: Salsa
Chart: Madeira PolyNeon 40
Stitches: 436
Thread used: 6.56ft



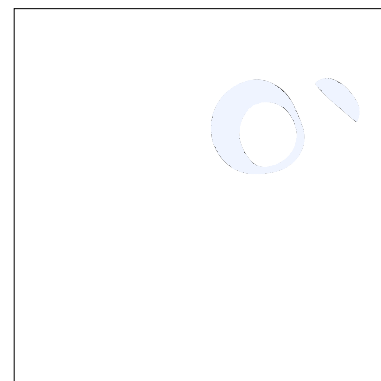
Stop #: 3
Element:
Code: 1900
Name: Celadon
Chart: Madeira PolyNeon 40
Stitches: 2 501
Thread used: 51.40ft



Stop #: 4
Element:
Code: 1748
Name: Margarita Lime
Chart: Madeira PolyNeon 40
Stitches: 1 522
Thread used: 24.78ft



Stop #: 5
Element:
Code: 1923
Name: Apricot
Chart: Madeira PolyNeon 40
Stitches: 3 833
Thread used: 63.24ft



Stop #: 6
Element:
Code: 1802
Name: Snow White
Chart: Madeira PolyNeon 40
Stitches: 1 920
Thread used: 36.03ft

Color Film

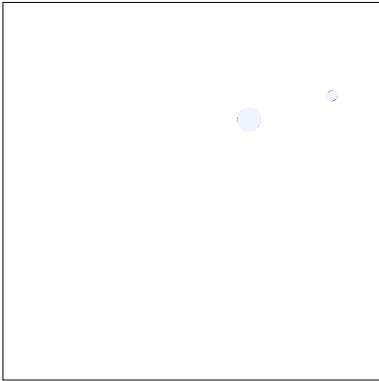
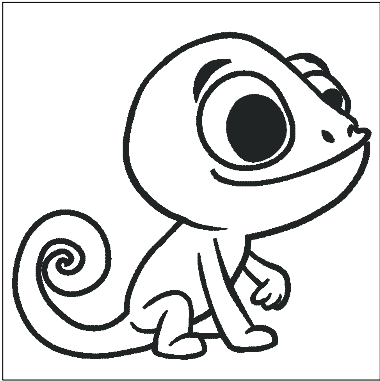
Wilcom EmbroideryStudio - Designing



Design: **chameleon.6x5,65 inch EMB**

Title:

Stitches: 23 115
Height: 5.66 in
Width: 6.03 in
Colors: 7
Colorway: Colorway 1
Zoom: 0.31



Stop #: 7
Element:
Code: 1800
Name: Emerald Black
Chart: Madeira PolyNeon 40
Stitches: 12 271
Thread used: 194.19ft

Stop #: 8
Element:
Code: 1802
Name: Snow White
Chart: Madeira PolyNeon 40
Stitches: 187
Thread used: 4.03ft

Production Summary

Wilcom EmbroideryStudio - Designing



Stitches: 23 115
 Height: 5.66 in
 Width: 6.03 in
 Colors: 7

Design: **chameleon.6x5,65 inch EMB**

Title:



Machine format: Tajima
 Color changes: 7
 Stops: 8
 Trims: 46
 Hoop: PRPQF200 (200 x 200)
 Max stitch: 9.4 mm
 Min stitch: 0.0 mm
 Max jump: 7.0 mm

Left: 76.5 mm
 Right: 76.5 mm
 Up: 71.9 mm
 Down: 71.9 mm
 EndX: 0.00 in
 EndY: 0.00 in
 Area: 34.11 in²
 Total thread: 389.50ft
 Total bobbin: 139.38ft

Colorway			Colorway 1
Background			
Product			Blanks\Blank
Stop	Color	Stitches	
1	1	443	1988 Kelly Green Madeira PolyNeon 40
2	2	436	1588 Salsa Madeira PolyNeon 40
3	3	2 501	1900 Celadon Madeira PolyNeon 40
4	4	1 522	1748 Margarita Lime Madeira PolyNeon 40
5	5	3 833	1923 Apricot Madeira PolyNeon 40
6	6	1 920	1802 Snow White Madeira PolyNeon 40
7	7	12 271	1800 Emerald Black Madeira PolyNeon 40
8	6	187	1802 Snow White Madeira PolyNeon 40

Chameleon Applique





