



Creative Fabrica

**Embroidery Design
Sewing Information**

www.creativefabrica.com/embroidery/

© Creative Fabrica

Approval Sheet

Wilcom EmbroideryStudio - Designing

EMBROIDERY FLOWER (11)

Design: **Embroidery Flower (11)**

Title:

Height: 5.01 in
Width: 3.68 in
Colors: 7
Colorway: Colorway 1
Zoom: 1:1



Product type:
Product:
Total qty:
Product colors:
Position:

Terms and Conditions:

Approved By:

Date:

Production Summary

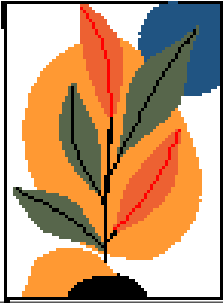
Wilcom EmbroideryStudio - Designing

EMBROIDERY FLOWER (11)

Design: **Embroidery Flower (11)**

Title:

Stitches: 35,248
 Height: 5.01 in
 Width: 3.68 in
 Colors: 7



Machine format: Tajima
 Color changes: 8
 Stops: 9
 Trims: 17
 Hoop: <None>
 Max stitch: 7.0 mm
 Min stitch: 0.2 mm
 Max jump: 7.0 mm

Left: 26.5 mm
 Right: 67.0 mm
 Up: 127.1 mm
 Down: 0.2 mm
 EndX: -0.50 in
 EndY: 0.59 in
 Area: 18.45 in²
 Total thread: 823.53ft
 Total bobbin: 349.21ft

Colorway			Colorway 1
Background			
Product			Blanks\Blank
Stop	Color	Stitches	
1	8	12,023	8 Black Default
2	9	11,287	9 White Default
3	5	1,277	R32 G84 B130
4	12	5,421	12 Orange Default
5	2	1,442	R237 G97 B50
6	3	68	3 Red Default
7	1	2,373	R87 G102 B75
8	8	690	8 Black Default
9	12	665	12 Orange Default

Approval Sheet

Wilcom EmbroideryStudio - Designing

EMBROIDERY FLOWER (11)

Design: **Embroidery Flower (11)**

Title:

Height: 6.01 in
Width: 4.42 in
Colors: 7
Colorway: Colorway 1
Zoom: 1:1



Product type:
Product:
Total qty:
Product colors:
Position:

Terms and Conditions:

Approved By:

Date:

Production Summary

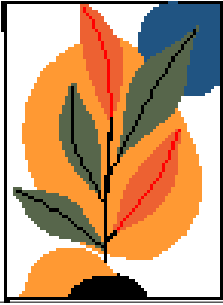
Wilcom EmbroideryStudio - Designing

EMBROIDERY FLOWER (11)

Design: **Embroidery Flower (11)**

Title:

Stitches: 49,611
 Height: 6.01 in
 Width: 4.42 in
 Colors: 7



Machine format: Tajima
 Color changes: 8
 Stops: 9
 Trims: 17
 Hoop: <None>
 Max stitch: 7.0 mm
 Min stitch: 0.0 mm
 Max jump: 7.0 mm

Left: 31.8 mm
 Right: 80.4 mm
 Up: 152.5 mm
 Down: 0.2 mm
 EndX: -0.61 in
 EndY: 0.70 in
 Area: 26.55 in²
 Total thread: 1173.23ft
 Total bobbin: 500.59ft

Colorway			Colorway 1
Background			
Product			Blanks\Blank
Stop	Color	Stitches	
1	8	17,121	8 Black Default
2	9	16,078	9 White Default
3	5	1,788	R32 G84 B130
4	12	7,653	12 Orange Default
5	2	1,940	R237 G97 B50
6	3	78	3 Red Default
7	1	3,186	R87 G102 B75
8	8	872	8 Black Default
9	12	893	12 Orange Default

Approval Sheet

Wilcom EmbroideryStudio - Designing

EMBROIDERY FLOWER (11)

Design: **Embroidery Flower (11)**

Title:

Height: 7.01 in
Width: 5.15 in
Colors: 7
Colorway: Colorway 1
Zoom: 1:1



Product type:
Product:
Total qty:
Product colors:
Position:

Terms and Conditions:

Approved By:

Date:

Production Summary

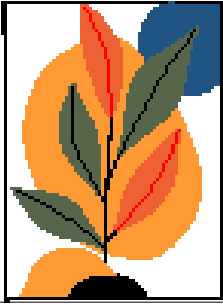
Wilcom EmbroideryStudio - Designing

EMBROIDERY FLOWER (11)

Design: **Embroidery Flower (11)**

Title:

Stitches: 66,390
 Height: 7.01 in
 Width: 5.15 in
 Colors: 7



Machine format: Tajima
 Color changes: 8
 Stops: 9
 Trims: 17
 Hoop: <None>
 Max stitch: 8.1 mm
 Min stitch: 0.3 mm
 Max jump: 7.0 mm

Left: 37.1 mm
 Right: 93.7 mm
 Up: 177.9 mm
 Down: 0.2 mm
 EndX: -0.71 in
 EndY: 0.82 in
 Area: 36.12 in²
 Total thread: 1583.39ft
 Total bobbin: 678.40ft

Colorway			Colorway 1
Background			
Product			Blanks\Blank
Stop	Color	Stitches	
1	8	23,077	8 Black Default
2	9	21,679	9 White Default
3	5	2,357	R32 G84 B130
4	12	10,312	12 Orange Default
5	2	2,523	R237 G97 B50
6	3	88	3 Red Default
7	1	4,129	R87 G102 B75
8	8	1,074	8 Black Default
9	12	1,149	12 Orange Default