



# **Creative Fabrica**

**Embroidery Design  
Sewing Information**

**[www.creativefabrica.com/embroidery/](http://www.creativefabrica.com/embroidery/)**

© Creative Fabrica

**Approval Sheet**

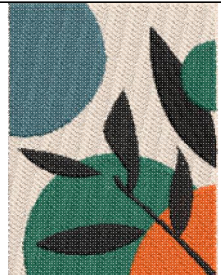
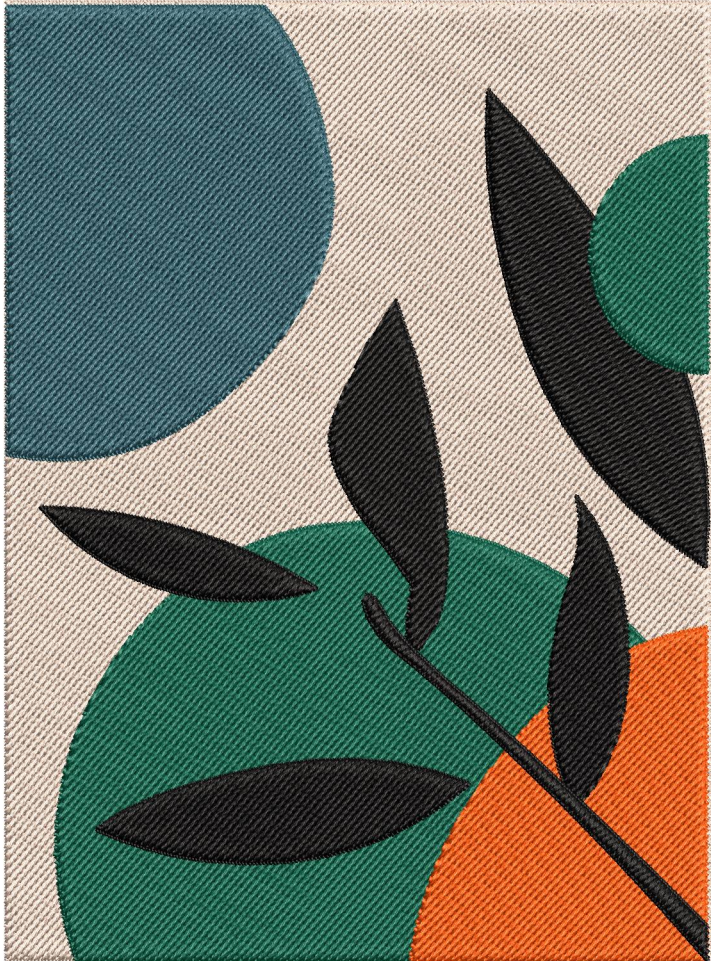
Wilcom EmbroideryStudio - Designing

**\*EMBROIDERY FLOWER (123)\***

Design: **Embroidery Flower (123)**

Title:

Height: 5.01 in  
Width: 3.67 in  
Colors: 5  
Colorway: Colorway 1  
Zoom: 1:1



Product type:  
Product:  
Total qty:  
Product colors:  
Position:

Terms and Conditions:

**Approved By:**

**Date:**

# Production Summary

Wilcom EmbroideryStudio - Designing

## \*EMBROIDERY FLOWER (123)\*

Design: **Embroidery Flower (123)**

Title:

Stitches: 35,723  
 Height: 5.01 in  
 Width: 3.67 in  
 Colors: 5



Machine format: Tajima  
 Color changes: 5  
 Stops: 6  
 Trims: 9  
 Hoop: <None>  
 Max stitch: 6.6 mm  
 Min stitch: 0.3 mm  
 Max jump: 6.6 mm

Left: 93.2 mm  
 Right: 0.1 mm  
 Up: 94.9 mm  
 Down: 32.4 mm  
 EndX: -2.08 in  
 EndY: 2.24 in  
 Area: 18.41 in<sup>2</sup>  
 Total thread: 781.46ft  
 Total bobbin: 323.02ft

Colorway			Colorway 1
Background			
Product			Blanks\Blank
Stop	Color	Stitches	
1	5	17,819	R255 G231 B212
2	4	5,161	R1 G87 B63
3	2	2,170	R255 G78 B2
4	8	6,092	8 Black Default
5	4	814	R1 G87 B63
6	3	3,665	R41 G93 B107

**Approval Sheet**

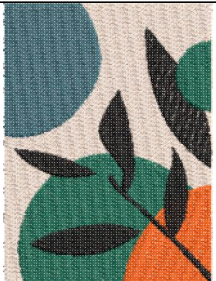
Wilcom EmbroideryStudio - Designing

**\*EMBROIDERY FLOWER (123)\***

Design: **Embroidery Flower (123)**

Title:

Height: 6.00 in  
Width: 4.41 in  
Colors: 5  
Colorway: Colorway 1  
Zoom: 1:1



Product type:  
Product:  
Total qty:  
Product colors:  
Position:

Terms and Conditions:

**Approved By:**

**Date:**

# Production Summary

Wilcom EmbroideryStudio - Designing

## \*EMBROIDERY FLOWER (123)\*

Design: **Embroidery Flower (123)**

Title:

Stitches: 49,595  
 Height: 6.00 in  
 Width: 4.41 in  
 Colors: 5



Machine format: Tajima  
 Color changes: 5  
 Stops: 6  
 Trims: 9  
 Hoop: <None>  
 Max stitch: 7.0 mm  
 Min stitch: 0.3 mm  
 Max jump: 7.0 mm

Left: 111.9 mm  
 Right: 0.1 mm  
 Up: 113.9 mm  
 Down: 38.6 mm  
 EndX: -2.51 in  
 EndY: 2.65 in  
 Area: 26.46 in<sup>2</sup>  
 Total thread: 1107.15ft  
 Total bobbin: 462.07ft

Colorway			Colorway 1
Background			
Product			Blanks\Blank
Stop	Color	Stitches	
1	5	25,128	R255 G231 B212
2	4	7,208	R1 G87 B63
3	2	3,017	R255 G78 B2
4	8	8,026	8 Black Default
5	4	1,099	R1 G87 B63
6	3	5,115	R41 G93 B107

**Approval Sheet**

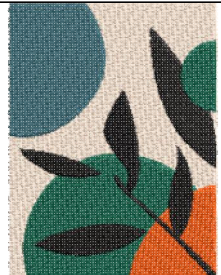
Wilcom EmbroideryStudio - Designing

**\*EMBROIDERY FLOWER (123)\***

Design: **Embroidery Flower (123)**

Title:

Height: 7.00 in  
Width: 5.14 in  
Colors: 5  
Colorway: Colorway 1  
Zoom: 1:1



Product type:  
Product:  
Total qty:  
Product colors:  
Position:

Terms and Conditions:

**Approved By:**  

---

  
**Date:**

# Production Summary

Wilcom EmbroideryStudio - Designing

## \*EMBROIDERY FLOWER (123)\*

Design: **Embroidery Flower (123)**

Title:

Stitches: 65,984  
 Height: 7.00 in  
 Width: 5.14 in  
 Colors: 5



Machine format: Tajima  
 Color changes: 5  
 Stops: 6  
 Trims: 9  
 Hoop: <None>  
 Max stitch: 6.7 mm  
 Min stitch: 0.3 mm  
 Max jump: 6.7 mm

Left: 130.5 mm  
 Right: 0.1 mm  
 Up: 132.9 mm  
 Down: 45.0 mm  
 EndX: -2.93 in  
 EndY: 3.09 in  
 Area: 36.00 in<sup>2</sup>  
 Total thread: 1493.14ft  
 Total bobbin: 627.08ft

Colorway			Colorway 1
Background			
Product			Blanks\Blank
Stop	Color	Stitches	
1	5	33,836	R255 G231 B212
2	4	9,641	R1 G87 B63
3	2	3,983	R255 G78 B2
4	8	10,266	8 Black Default
5	4	1,438	R1 G87 B63
6	3	6,818	R41 G93 B107