



# **Creative Fabrica**

**Embroidery Design  
Sewing Information**

**[www.creativefabrica.com/embroidery/](http://www.creativefabrica.com/embroidery/)**

© Creative Fabrica

**Approval Sheet**

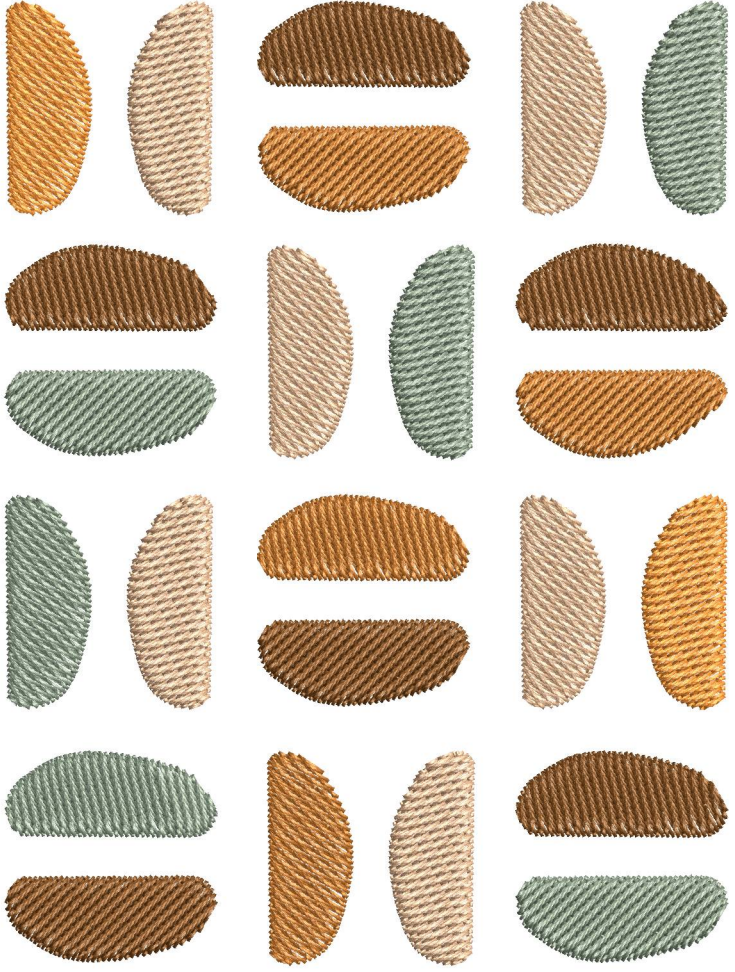
Wilcom EmbroideryStudio - Designing

**\*EMBROIDERY FLOWER (119)\***

Design: **Embroidery Flower (119)**

Title:

Height: 5.01 in  
Width: 3.76 in  
Colors: 5  
Colorway: Colorway 1  
Zoom: 1:1



Product type:  
Product:  
Total qty:  
Product colors:  
Position:

**Terms and Conditions:**

**Approved By:**  

---

  
**Date:**

# Production Summary

Wilcom EmbroideryStudio - Designing

## \*EMBROIDERY FLOWER (119)\*

Design: **Embroidery Flower (119)**

Title:

Stitches: 9,672  
 Height: 5.01 in  
 Width: 3.76 in  
 Colors: 5



Machine format: Tajima  
 Color changes: 21  
 Stops: 22  
 Trims: 23  
 Hoop: <None>  
 Max stitch: 8.9 mm  
 Min stitch: 0.4 mm  
 Max jump: 6.9 mm

Left: 11.1 mm  
 Right: 84.3 mm  
 Up: 13.7 mm  
 Down: 113.5 mm  
 EndX: 3.32 in  
 EndY: -3.67 in  
 Area: 18.80 in<sup>2</sup>  
 Total thread: 190.13ft  
 Total bobbin: 70.78ft

Colorway			Colorway 1
Background			
Product			Blanks\Blank
Stop	Color	Stitches	
1	12	388	12 Orange Default
2	4	412	R196 G118 B39
3	2	402	R230 G189 B149
4	1	402	R125 G75 B25
5	2	394	R230 G189 B149
6	3	804	R129 G156 B134
7	1	413	R125 G75 B25
8	2	400	R230 G189 B149
9	4	401	R196 G118 B39
10	2	398	R230 G189 B149
11	12	397	12 Orange Default
12	3	418	R129 G156 B134
13	1	402	R125 G75 B25
14	2	394	R230 G189 B149
15	3	396	R129 G156 B134
16	4	397	R196 G118 B39
17	1	824	R125 G75 B25
18	3	418	R129 G156 B134

# Production Summary

Wilcom EmbroideryStudio - Designing

## \*EMBROIDERY FLOWER (119)\*

Design: **Embroidery Flower (119)**

Title:

Stitches: 9,672  
 Height: 5.01 in  
 Width: 3.76 in  
 Colors: 5



Machine format: Tajima  
 Color changes: 21  
 Stops: 22  
 Trims: 23  
 Hoop: <None>  
 Max stitch: 8.9 mm  
 Min stitch: 0.4 mm  
 Max jump: 6.9 mm

Left: 11.1 mm  
 Right: 84.3 mm  
 Up: 13.7 mm  
 Down: 113.5 mm  
 EndX: 3.32 in  
 EndY: -3.67 in  
 Area: 18.80 in<sup>2</sup>  
 Total thread: 190.13ft  
 Total bobbin: 70.78ft

Colorway			Colorway 1
Background			
Product			Blanks\Blank
Stop	Color	Stitches	
19	4	399	R196 G118 B39
20	2	398	R230 G189 B149
21	3	408	R129 G156 B134
22	1	405	R125 G75 B25

**Approval Sheet**

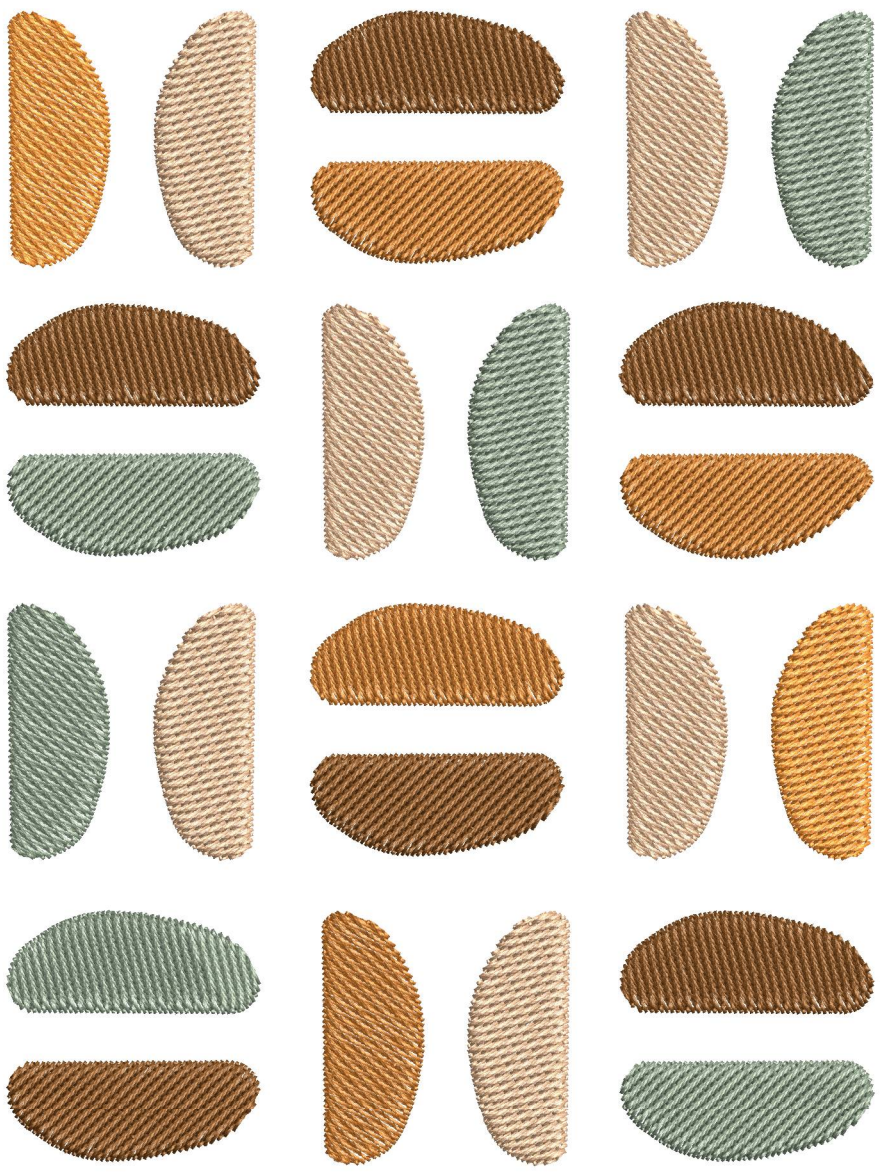
Wilcom EmbroideryStudio - Designing

**\*EMBROIDERY FLOWER (119)\***

Design: **Embroidery Flower (119)**

Title:

Height: 6.01 in  
Width: 4.51 in  
Colors: 5  
Colorway: Colorway 1  
Zoom: 1:1



Product type:  
Product:  
Total qty:  
Product colors:  
Position:

Terms and Conditions:

**Approved By:**  

---

  
**Date:**

Stitches: 12,860  
 Height: 6.01 in  
 Width: 4.51 in  
 Colors: 5

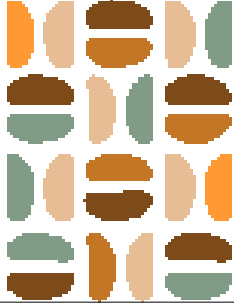
# Production Summary

Wilcom EmbroideryStudio - Designing

## \*EMBROIDERY FLOWER (119)\*

Design: **Embroidery Flower (119)**

Title:



Machine format: Tajima  
 Color changes: 21  
 Stops: 22  
 Trims: 23  
 Hoop: <None>  
 Max stitch: 9.9 mm  
 Min stitch: 0.4 mm  
 Max jump: 7.0 mm

Left: 13.4 mm  
 Right: 101.1 mm  
 Up: 16.4 mm  
 Down: 136.1 mm  
 EndX: 3.98 in  
 EndY: -4.40 in  
 Area: 27.06 in<sup>2</sup>  
 Total thread: 260.52ft  
 Total bobbin: 100.10ft

Colorway			Colorway 1
Background			
Product			Blanks\Blank
Stop	Color	Stitches	
1	12	525	12 Orange Default
2	4	535	R196 G118 B39
3	2	533	R230 G189 B149
4	1	533	R125 G75 B25
5	2	533	R230 G189 B149
6	3	1,073	R129 G156 B134
7	1	543	R125 G75 B25
8	2	535	R230 G189 B149
9	4	533	R196 G118 B39
10	2	534	R230 G189 B149
11	12	528	12 Orange Default
12	3	548	R129 G156 B134
13	1	536	R125 G75 B25
14	2	531	R230 G189 B149
15	3	531	R129 G156 B134
16	4	531	R196 G118 B39
17	1	1,085	R125 G75 B25
18	3	548	R129 G156 B134

**Production Summary**

Wilcom EmbroideryStudio - Designing

**\*EMBROIDERY FLOWER (119)\***

Design: **Embroidery Flower (119)**

Title:

Stitches: 12,860  
 Height: 6.01 in  
 Width: 4.51 in  
 Colors: 5



Machine format: Tajima  
 Color changes: 21  
 Stops: 22  
 Trims: 23  
 Hoop: <None>  
 Max stitch: 9.9 mm  
 Min stitch: 0.4 mm  
 Max jump: 7.0 mm

Left: 13.4 mm  
 Right: 101.1 mm  
 Up: 16.4 mm  
 Down: 136.1 mm  
 EndX: 3.98 in  
 EndY: -4.40 in  
 Area: 27.06 in<sup>2</sup>  
 Total thread: 260.52ft  
 Total bobbin: 100.10ft

Colorway			Colorway 1
Background			
Product			Blanks\Blank
Stop	Color	Stitches	
19	4	536	R196 G118 B39
20	2	529	R230 G189 B149
21	3	540	R129 G156 B134
22	1	538	R125 G75 B25

**Approval Sheet**

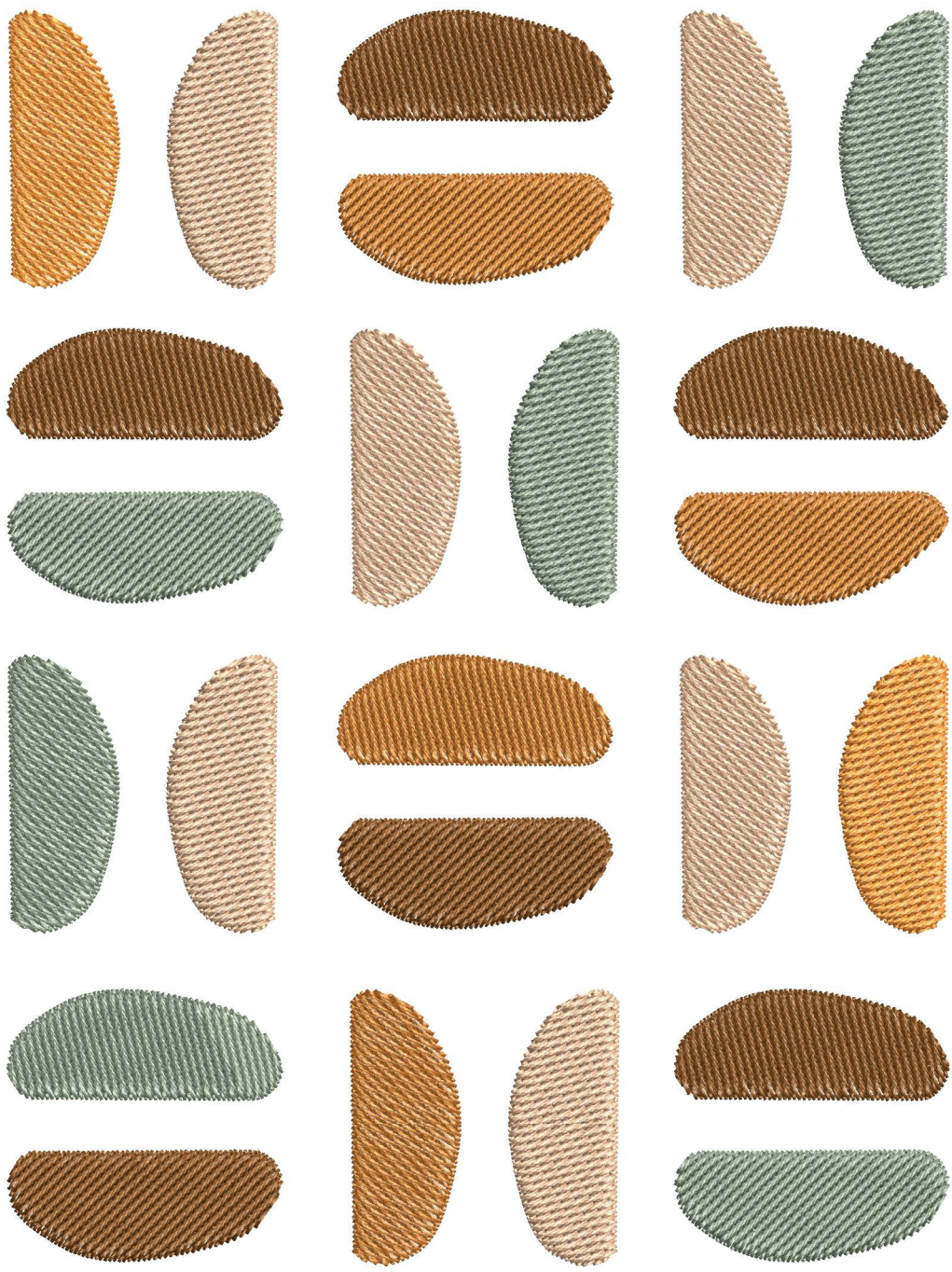
Wilcom EmbroideryStudio - Designing

**\*EMBROIDERY FLOWER (119)\***

Design: **Embroidery Flower (119)**

Title:

Height: 7.01 in  
Width: 5.26 in  
Colors: 5  
Colorway: Colorway 1  
Zoom: 1:1



Product type:  
Product:  
Total qty:  
Product colors:  
Position:

**Terms and Conditions:**

**Approved By:**  
  

---

  
**Date:**

Stitches: 16,310  
 Height: 7.01 in  
 Width: 5.26 in  
 Colors: 5

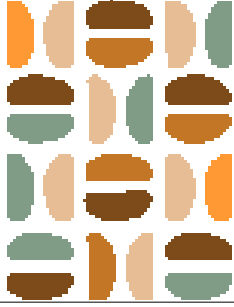
# Production Summary

Wilcom EmbroideryStudio - Designing

## \*EMBROIDERY FLOWER (119)\*

Design: **Embroidery Flower (119)**

Title:



Machine format: Tajima  
 Color changes: 21  
 Stops: 22  
 Trims: 23  
 Hoop: <None>  
 Max stitch: 11.5 mm  
 Min stitch: 0.2 mm  
 Max jump: 7.0 mm

Left: 15.7 mm  
 Right: 117.8 mm  
 Up: 19.1 mm  
 Down: 158.9 mm  
 EndX: 4.64 in  
 EndY: -5.14 in  
 Area: 36.82 in<sup>2</sup>  
 Total thread: 338.53ft  
 Total bobbin: 132.92ft

Colorway			Colorway 1
Background			
Product			Blanks\Blank
Stop	Color	Stitches	
1	12	664	12 Orange Default
2	4	680	R196 G118 B39
3	2	680	R230 G189 B149
4	1	678	R125 G75 B25
5	2	674	R230 G189 B149
6	3	1,358	R129 G156 B134
7	1	690	R125 G75 B25
8	2	676	R230 G189 B149
9	4	686	R196 G118 B39
10	2	672	R230 G189 B149
11	12	671	12 Orange Default
12	3	697	R129 G156 B134
13	1	676	R125 G75 B25
14	2	675	R230 G189 B149
15	3	670	R129 G156 B134
16	4	671	R196 G118 B39
17	1	1,374	R125 G75 B25
18	3	693	R129 G156 B134

**Production Summary**

Wilcom EmbroideryStudio - Designing

**\*EMBROIDERY FLOWER (119)\***

Design: **Embroidery Flower (119)**

Title:

Stitches: 16,310  
 Height: 7.01 in  
 Width: 5.26 in  
 Colors: 5



Machine format: Tajima  
 Color changes: 21  
 Stops: 22  
 Trims: 23  
 Hoop: <None>  
 Max stitch: 11.5 mm  
 Min stitch: 0.2 mm  
 Max jump: 7.0 mm

Left: 15.7 mm  
 Right: 117.8 mm  
 Up: 19.1 mm  
 Down: 158.9 mm  
 EndX: 4.64 in  
 EndY: -5.14 in  
 Area: 36.82 in<sup>2</sup>  
 Total thread: 338.53ft  
 Total bobbin: 132.92ft

Colorway			Colorway 1
Background			
Product			Blanks\Blank
Stop	Color	Stitches	
19	4	680	R196 G118 B39
20	2	669	R230 G189 B149
21	3	686	R129 G156 B134
22	1	688	R125 G75 B25