

# **Creative Fabrica**

**Embroidery Design  
Sewing Information**

**[www.creativefabrica.com/embroidery/](http://www.creativefabrica.com/embroidery/)**

© Creative Fabrica

**Approval Sheet**

Wilcom EmbroideryStudio - Designing

**\*EMBROIDERY FLOWER 102\***

Design: **Embroidery Flower 102**

Title:

Height: 5.01 in  
Width: 3.20 in  
Colors: 5  
Colorway: Colorway 1  
Zoom: 1:1



Product type:  
Product:  
Total qty:  
Product colors:  
Position:

Terms and Conditions:

**Approved By:**

**Date:**

# Production Summary

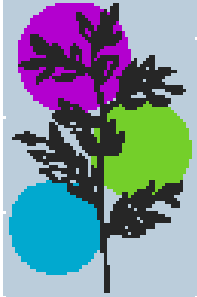
Wilcom EmbroideryStudio - Designing

## \*EMBROIDERY FLOWER 102\*

Design: **Embroidery Flower 102**

Title:

Stitches: 26,173  
 Height: 5.01 in  
 Width: 3.20 in  
 Colors: 5



Machine format: Tajima  
 Color changes: 4  
 Stops: 5  
 Trims: 38  
 Hoop: <None>  
 Max stitch: 6.8 mm  
 Min stitch: 0.3 mm  
 Max jump: 6.8 mm

Left: 45.3 mm  
 Right: 35.9 mm  
 Up: 127.0 mm  
 Down: 0.4 mm  
 EndX: -0.00 in  
 EndY: 1.08 in  
 Area: 16.03 in<sup>2</sup>  
 Total thread: 468.81ft  
 Total bobbin: 175.07ft

Colorway			Colorway 1
Background			
Product			Blanks\Blank
Stop	Color	Stitches	
1	5	13,310	R187 G205 B219
2	3	3,002	R179 G0 B207
3	4	2,199	R1 G169 B207
4	2	2,370	R116 G207 B42
5	1	5,290	R38 G38 B38

**Approval Sheet**

Wilcom EmbroideryStudio - Designing

**\*EMBROIDERY FLOWER 102\***

Design: **Embroidery Flower 102**

Title:

Height: 6.01 in  
Width: 3.84 in  
Colors: 5  
Colorway: Colorway 1  
Zoom: 1:1



Product type:  
Product:  
Total qty:  
Product colors:  
Position:

Terms and Conditions:

**Approved By:**  

---

  
**Date:**

# Production Summary

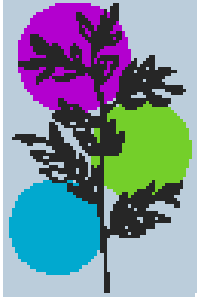
Wilcom EmbroideryStudio - Designing

## \*EMBROIDERY FLOWER 102\*

Design: **Embroidery Flower 102**

Title:

Stitches: 35,763  
 Height: 6.01 in  
 Width: 3.84 in  
 Colors: 5



Machine format: Tajima  
 Color changes: 4  
 Stops: 5  
 Trims: 42  
 Hoop: <None>  
 Max stitch: 8.8 mm  
 Min stitch: 0.1 mm  
 Max jump: 6.9 mm

Left: 54.4 mm  
 Right: 43.0 mm  
 Up: 152.4 mm  
 Down: 0.4 mm  
 EndX: -0.00 in  
 EndY: 1.29 in  
 Area: 23.07 in<sup>2</sup>  
 Total thread: 651.32ft  
 Total bobbin: 245.93ft

Colorway		Colorway 1	
Background			
Product		Blanks\Blank	
Stop	Color	Stitches	
1	5	18,972	R187 G205 B219
2	3	4,143	R179 G0 B207
3	4	3,043	R1 G169 B207
4	2	3,346	R116 G207 B42
5	1	6,257	R38 G38 B38

**Approval Sheet**

Wilcom EmbroideryStudio - Designing

**\*EMBROIDERY FLOWER 102\***

Design: **Embroidery Flower 102**

Title:

Height: 7.01 in  
Width: 4.48 in  
Colors: 5  
Colorway: Colorway 1  
Zoom: 1:1



Product type:  
Product:  
Total qty:  
Product colors:  
Position:

**Terms and Conditions:**

**Approved By:**

**Date:**

# Production Summary

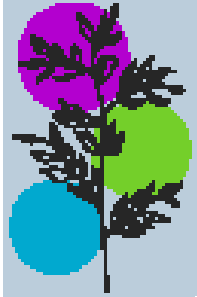
Wilcom EmbroideryStudio - Designing

## \*EMBROIDERY FLOWER 102\*

Design: **Embroidery Flower 102**

Title:

Stitches: 47,050  
 Height: 7.01 in  
 Width: 4.48 in  
 Colors: 5



Machine format: Tajima  
 Color changes: 4  
 Stops: 5  
 Trims: 43  
 Hoop: <None>  
 Max stitch: 9.1 mm  
 Min stitch: 0.3 mm  
 Max jump: 6.7 mm

Left: 63.5 mm  
 Right: 50.2 mm  
 Up: 177.8 mm  
 Down: 0.4 mm  
 EndX: -0.00 in  
 EndY: 1.51 in  
 Area: 31.38 in<sup>2</sup>  
 Total thread: 867.46ft  
 Total bobbin: 330.13ft

Colorway			Colorway 1
Background			
Product			Blanks\Blank
Stop	Color	Stitches	
1	5	25,722	R187 G205 B219
2	3	5,606	R179 G0 B207
3	4	4,068	R1 G169 B207
4	2	4,451	R116 G207 B42
5	1	7,201	R38 G38 B38