



Creative Fabrica

**Embroidery Design
Sewing Information**

www.creativefabrica.com/embroidery/

© Creative Fabrica

Production Worksheet

Wilcom EmbroideryStudio - Designing



Design: **3**

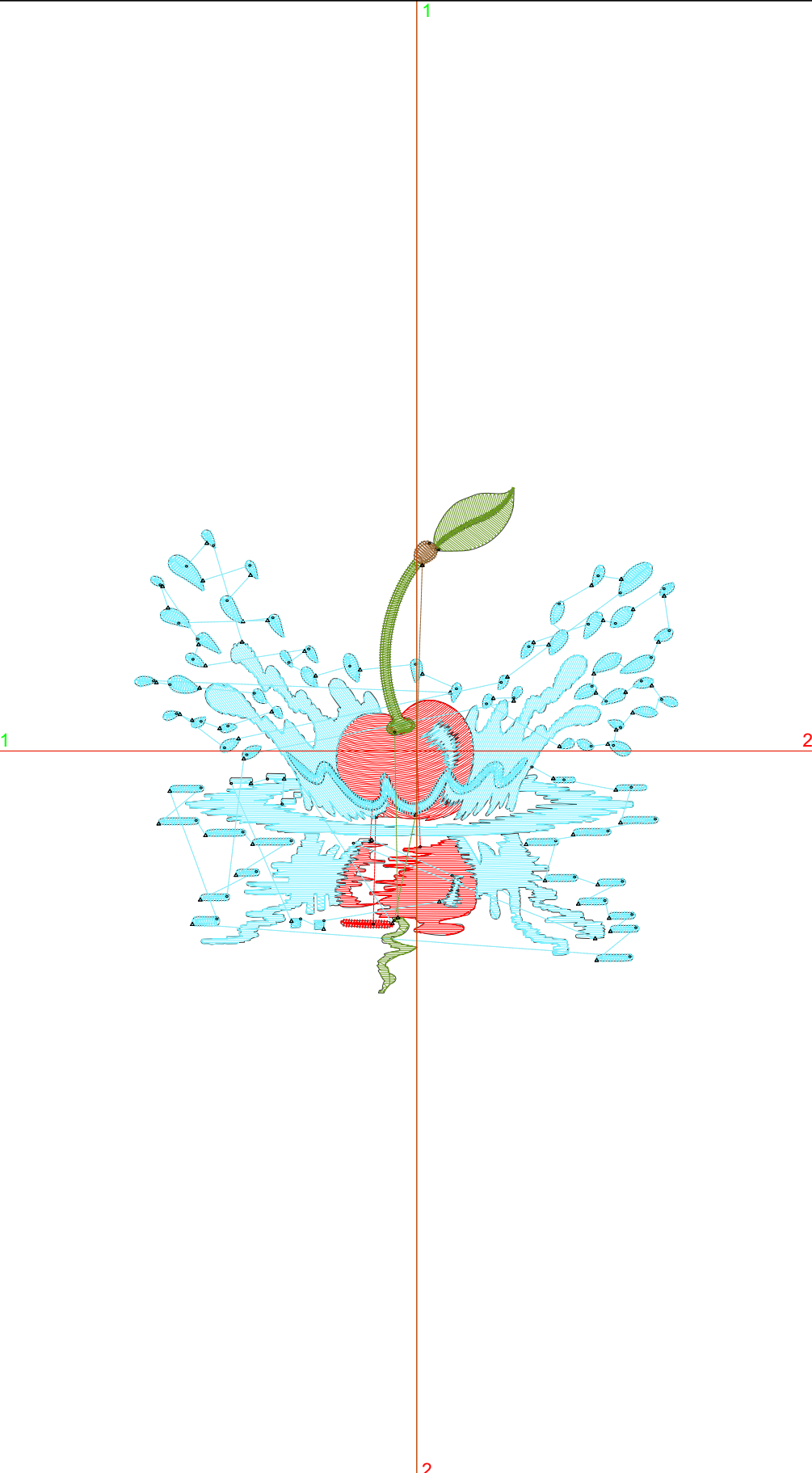
Title:

Stitches: 8,228
 Height: 3.26 in
 Width: 3.50 in
 Colors: 4
 Colorway: Colorway 1
 Zoom: 1:1

Machine format: Tajima
 Color changes: 3
 Stops: 4
 Trims: 75
 Appliqués: 0
 Left: 46.2 mm
 Right: 42.7 mm
 Up: 43.2 mm
 Down: 39.6 mm
 EndX: 0.00 in
 EndY: 0.00 in
 Area: 11.42 in²
 Max stitch: 6.9 mm
 Min stitch: 0.0 mm
 Max jump: 6.9 mm
 Total thread: 106.69ft
 Total bobbin: 30.45ft

Stop Sequence:

#	N#	Color	St.	Code	Name	Chart
1.	4	■	1,224		R255 G0 B0	
2.	3	■	6,268		R118 G241 B255	
3.	1	■	688		R106 G153 B30	
4.	14	■	46	14	Brown	Default



Production Worksheet

Wilcom EmbroideryStudio - Designing



Design: **4**

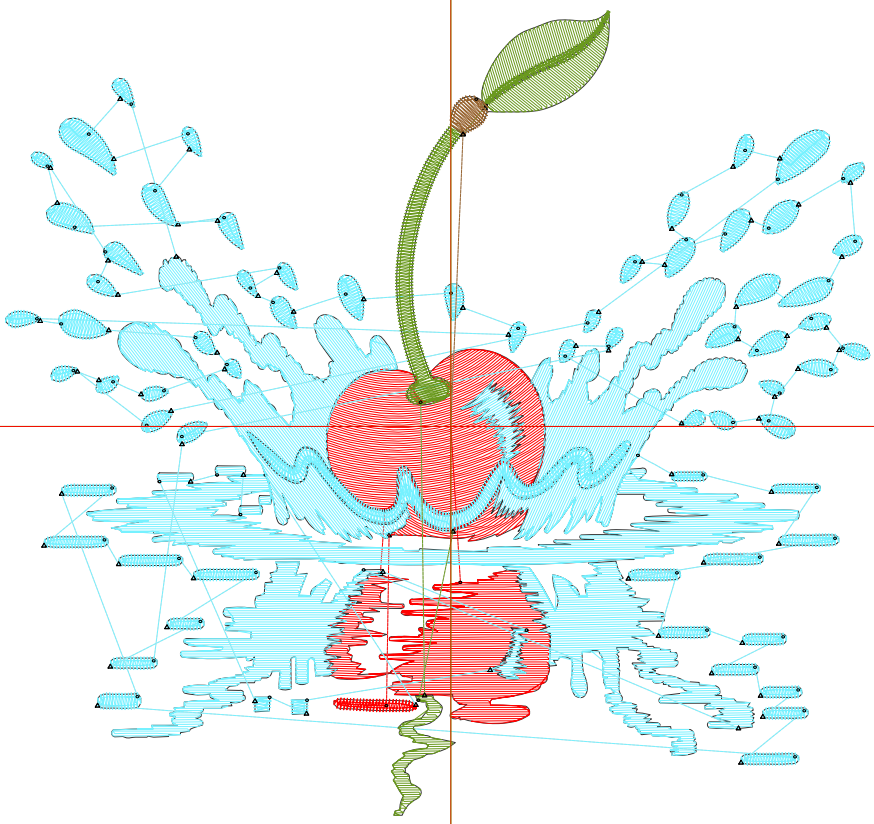
Title:

Stitches: 10,629
 Height: 4.19 in
 Width: 4.50 in
 Colors: 4
 Colorway: Colorway 1
 Zoom: 1:1

Machine format: Tajima
 Color changes: 3
 Stops: 4
 Trims: 79
 Appliqués: 0
 Left: 58.9 mm
 Right: 55.4 mm
 Up: 55.0 mm
 Down: 51.4 mm
 EndX: 0.00 in
 EndY: 0.00 in
 Area: 18.87 in²
 Max stitch: 6.9 mm
 Min stitch: 0.0 mm
 Max jump: 6.9 mm
 Total thread: 149.83ft
 Total bobbin: 46.68ft

Stop Sequence:

#	N#	Color	St.	Code	Name	Chart
1.	4	Red	1,768		R255 G0 B0	
2.	3	Cyan	7,894		R118 G241 B255	
3.	1	Green	909		R106 G153 B30	
4.	14	Brown	56	14	Brown	Default



Production Worksheet

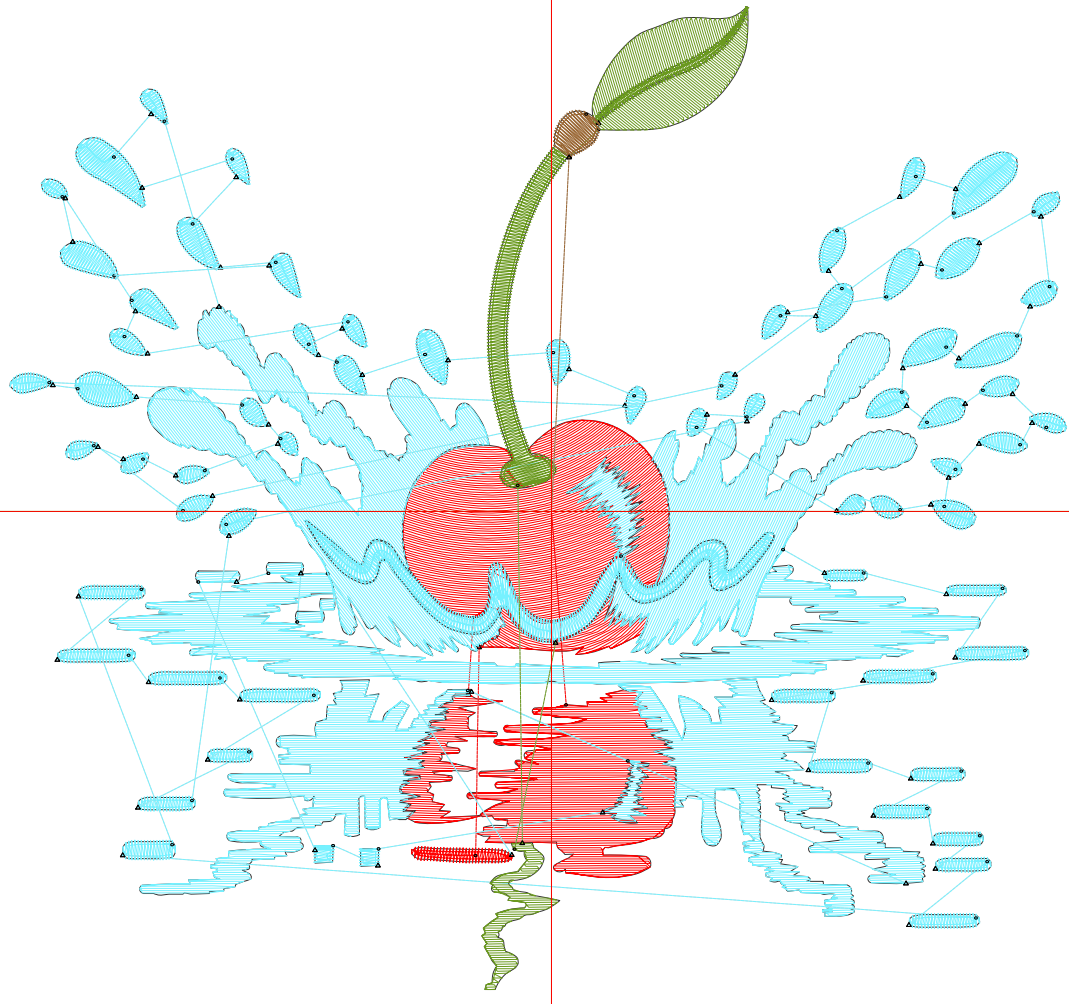
Wilcom EmbroideryStudio - Designing



Design: **5**

Title:

Stitches: 13,499
Height: 5.12 in
Width: 5.50 in
Colors: 4
Colorway: Colorway 1
Zoom: 1:1



Production Worksheet

Wilcom EmbroideryStudio - Designing



Design: **5**

Title:

Stitches: 13,499
 Height: 5.12 in
 Width: 5.50 in
 Colors: 4
 Colorway: Colorway 1
 Zoom: 1:1

Machine format: Tajima
 Color changes: 3
 Stops: 4
 Trims: 81
 Appliqués: 0
 Left: 71.6 mm
 Right: 68.1 mm
 Up: 66.8 mm
 Down: 63.2 mm
 EndX: 0.00 in
 EndY: 0.00 in
 Area 28.17 in²
 Max stitch: 7.3 mm
 Min stitch: 0.0 mm
 Max jump: 6.9 mm
 Total thread: 203.14ft
 Total bobbin: 67.11ft

Stop Sequence:

#	N#	Color	St.	Code	Name	Chart
1.	4		2,372		R255 G0 B0	
2.	3		9,896		R118 G241 B255	
3.	1		1,161		R106 G153 B30	
4.	14		68	14	Brown	Default

Production Worksheet

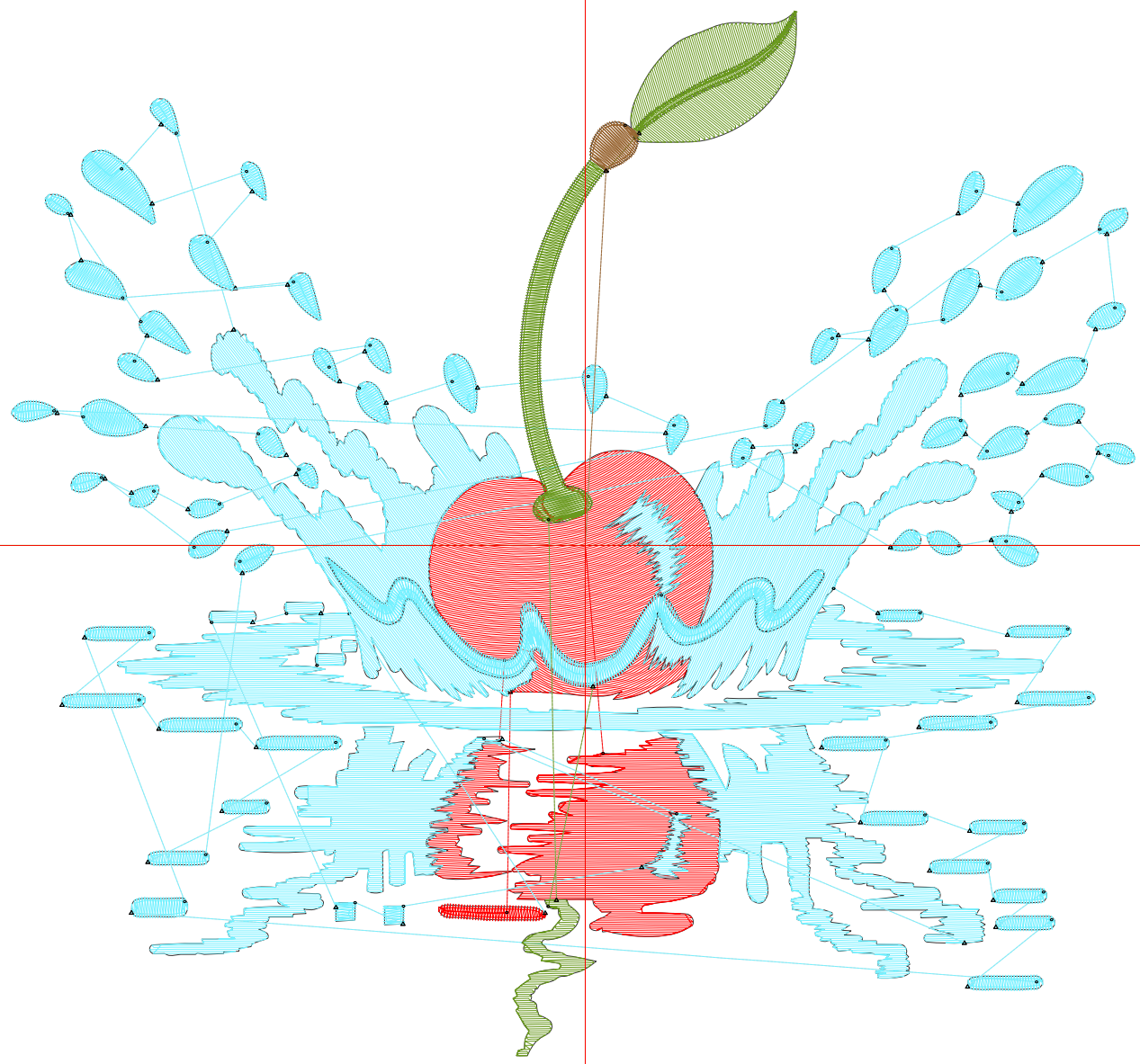
Wilcom EmbroideryStudio - Designing



Design: **6**

Title:

Stitches: 16,444
Height: 6.05 in
Width: 6.50 in
Colors: 4
Colorway: Colorway 1
Zoom: 1:1



Production Worksheet

Wilcom EmbroideryStudio - Designing



Design: **6**

Title:

Stitches: 16,444
 Height: 6.05 in
 Width: 6.50 in
 Colors: 4
 Colorway: Colorway 1
 Zoom: 1:1

Machine format: Tajima
 Color changes: 3
 Stops: 4
 Trims: 81
 Appliqués: 0
 Left: 84.3 mm
 Right: 80.8 mm
 Up: 78.6 mm
 Down: 75.1 mm
 EndX: 0.00 in
 EndY: 0.00 in
 Area 39.34 in²
 Max stitch: 8.5 mm
 Min stitch: 0.0 mm
 Max jump: 7.0 mm
 Total thread: 261.68ft
 Total bobbin: 90.35ft

Stop Sequence:

#	N#	Color	St.	Code	Name	Chart
1.	4		3,076		R255 G0 B0	
2.	3		11,858		R118 G241 B255	
3.	1		1,427		R106 G153 B30	
4.	14		81	14	Brown	Default

Production Worksheet

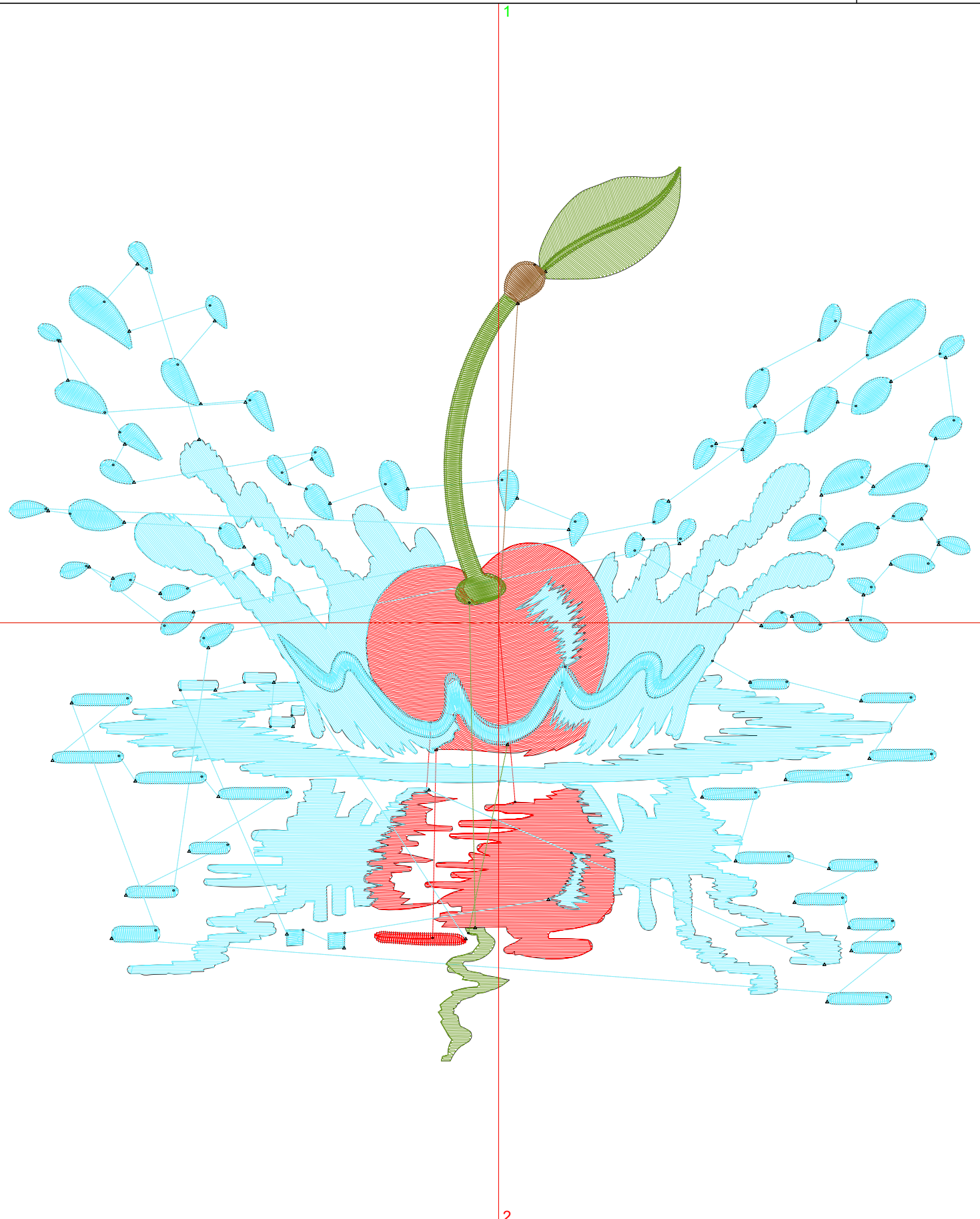
Wilcom EmbroideryStudio - Designing



Design: **7**

Title:

Stitches: 19,662
Height: 6.98 in
Width: 7.50 in
Colors: 4
Colorway: Colorway 1
Zoom: 1:1



Production Worksheet

Wilcom EmbroideryStudio - Designing



Design: **7**

Title:

Stitches: 19,662
 Height: 6.98 in
 Width: 7.50 in
 Colors: 4
 Colorway: Colorway 1
 Zoom: 1:1

Machine format: Tajima
 Color changes: 3
 Stops: 4
 Trims: 83
 Appliqués: 0
 Left: 97.0 mm
 Right: 93.5 mm
 Up: 90.4 mm
 Down: 86.9 mm
 EndX: 0.00 in
 EndY: 0.00 in
 Area 52.37 in²
 Max stitch: 9.8 mm
 Min stitch: 0.0 mm
 Max jump: 7.0 mm
 Total thread: 329.55ft
 Total bobbin: 118.06ft

Stop Sequence:

#	N#	Color	St.	Code	Name	Chart
1.	4		3,799		R255 G0 B0	
2.	3		14,061		R118 G241 B255	
3.	1		1,708		R106 G153 B30	
4.	14		92	14	Brown	Default