



# **Creative Fabrica**

**Embroidery Design  
Sewing Information**

**[www.creativefabrica.com/embroidery/](http://www.creativefabrica.com/embroidery/)**

© Creative Fabrica

# Production Worksheet

Wilcom EmbroideryStudio - Designing

\* 4 \*

Design: 4

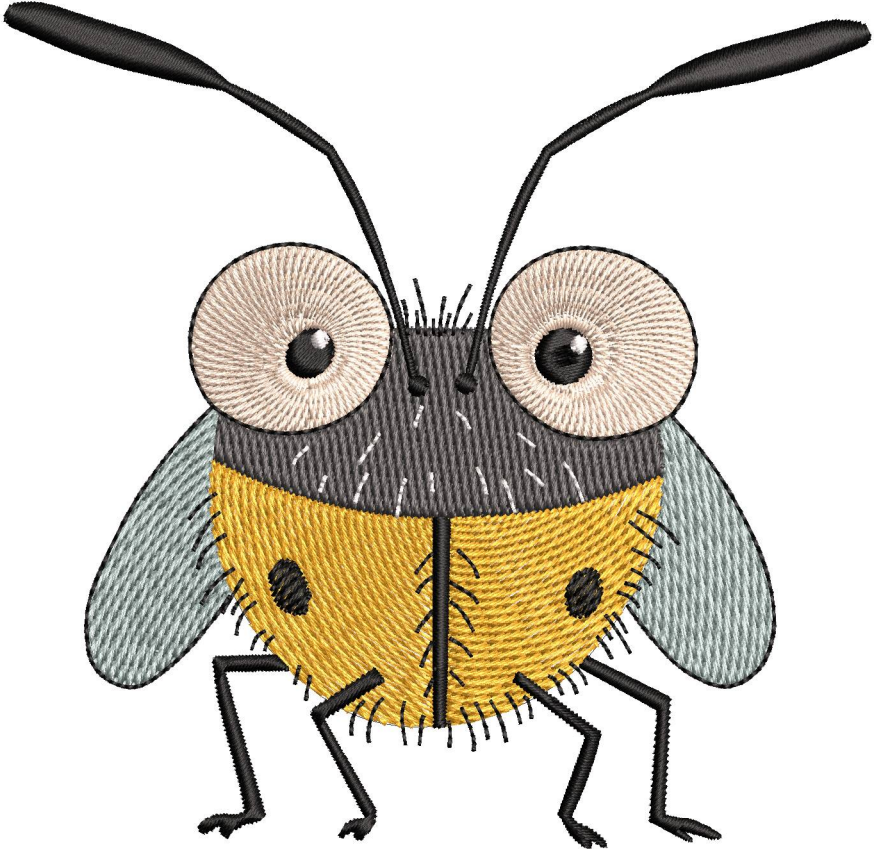
Title:

Stitches: 10,765  
 Height: 4.40 in  
 Width: 4.51 in  
 Colors: 6  
 Colorway: Colorway 1  
 Zoom: 1:1

Machine format: Tajima  
 Color changes: 5  
 Stops: 6  
 Trims: 89  
 Appliqués: 0  
 Left: 27.5 mm  
 Right: 86.9 mm  
 Up: 53.3 mm  
 Down: 58.5 mm  
 EndX: 1.34 in  
 EndY: -0.12 in  
 Area: 19.84 in<sup>2</sup>  
 Max stitch: 7.0 mm  
 Min stitch: 0.1 mm  
 Max jump: 7.0 mm  
 Total thread: 193.13ft  
 Total bobbin: 71.42ft

Stop Sequence:

#	N#	Color	St.	Code	Name	Chart
1.	1		1,008	R141	G166 B164	
2.	5		1,192	R64	G64 B64	
3.	4		1,809	R255	G181 B34	
4.	2		2,168	R255	G227 B204	
5.	8		4,257	8	Black	Default
6.	9		329	9	White	Default



# Color Film

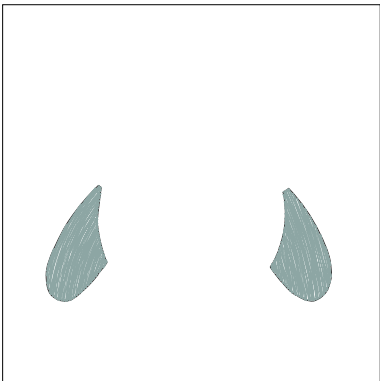
Wilcom EmbroideryStudio - Designing

\* 4 \*

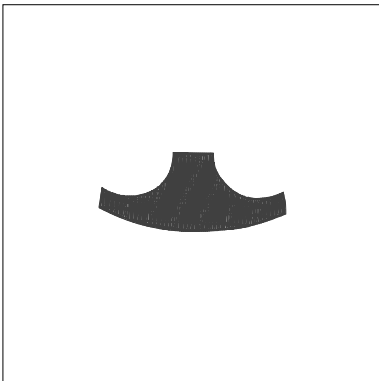
Design: 4

Title:

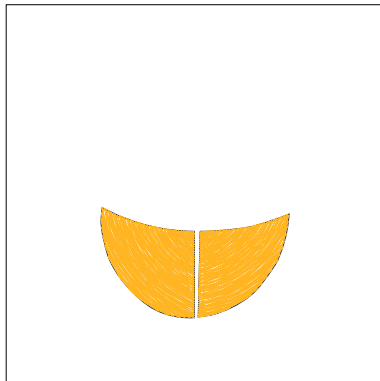
Stitches: 10,765  
Height: 4.40 in  
Width: 4.51 in  
Colors: 6  
Colorway: Colorway 1  
Zoom: 0.41



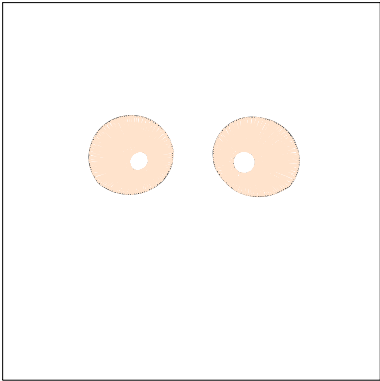
Stop #: 1  
Element:  
Code:  
Name: R141 G166 B164  
Chart:  
Stitches: 1,008  
Thread used: 22.19ft



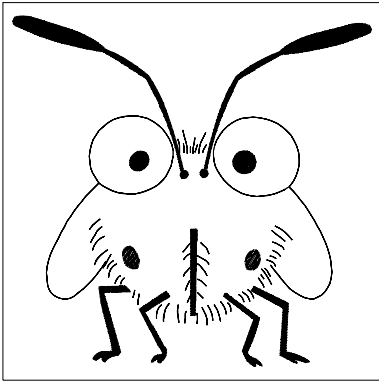
Stop #: 2  
Element:  
Code:  
Name: R64 G64 B64  
Chart:  
Stitches: 1,192  
Thread used: 23.95ft



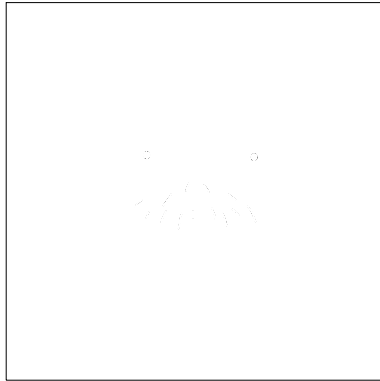
Stop #: 3  
Element:  
Code:  
Name: R255 G181 B34  
Chart:  
Stitches: 1,809  
Thread used: 36.57ft



Stop #: 4  
Element:  
Code:  
Name: R255 G227 B204  
Chart:  
Stitches: 2,168  
Thread used: 41.12ft



Stop #: 5  
Element:  
Code: 8  
Name: Black  
Chart: Default  
Stitches: 4,257  
Thread used: 63.78ft



Stop #: 6  
Element:  
Code: 9  
Name: White  
Chart: Default  
Stitches: 329  
Thread used: 3.55ft

# Production Worksheet

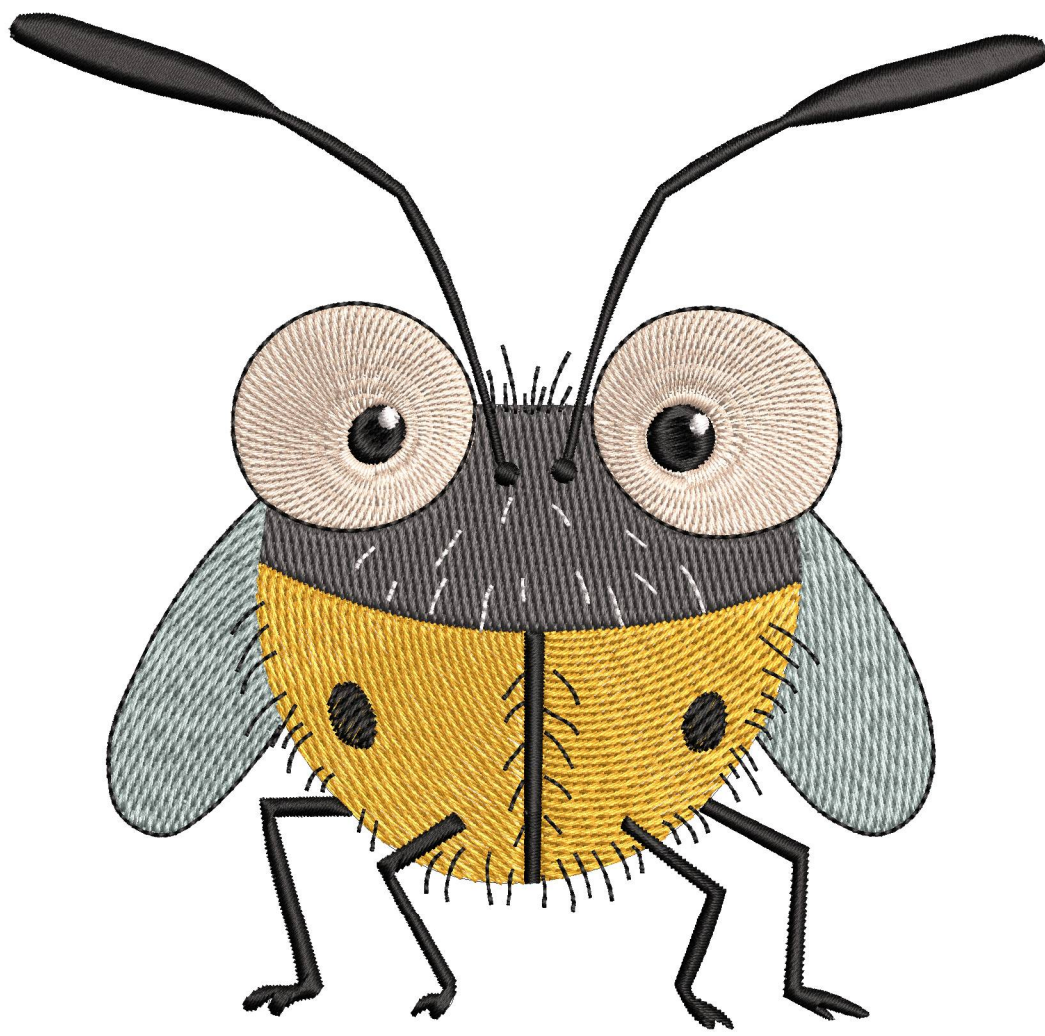
Wilcom EmbroideryStudio - Designing

\*5\*

Design: 5

Title:

Stitches: 13,700  
Height: 5.28 in  
Width: 5.41 in  
Colors: 6  
Colorway: Colorway 1  
Zoom: 1:1



# Production Worksheet

Wilcom EmbroideryStudio - Designing

# \*5\*





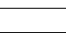

Design: **5**

Title:

Stitches: 13,700  
 Height: 5.28 in  
 Width: 5.41 in  
 Colors: 6  
 Colorway: Colorway 1  
 Zoom: 1:1

Machine format: Tajima  
 Color changes: 5  
 Stops: 6  
 Trims: 89  
 Appliqués: 0  
 Left: 33.0 mm  
 Right: 104.3 mm  
 Up: 64.0 mm  
 Down: 70.2 mm  
 EndX: 1.61 in  
 EndY: -0.14 in  
 Area 28.56 in<sup>2</sup>  
 Max stitch: 7.5 mm  
 Min stitch: 0.0 mm  
 Max jump: 7.0 mm  
 Total thread: 259.75ft  
 Total bobbin: 99.49ft

Stop Sequence:

#	N#	Color	St.	Code	Name	Chart
1.	1		1,397		R141 G166 B164	
2.	5		1,579		R64 G64 B64	
3.	4		2,466		R255 G181 B34	
4.	2		2,911		R255 G227 B204	
5.	8		4,995	8	Black	Default
6.	9		350	9	White	Default

# Color Film

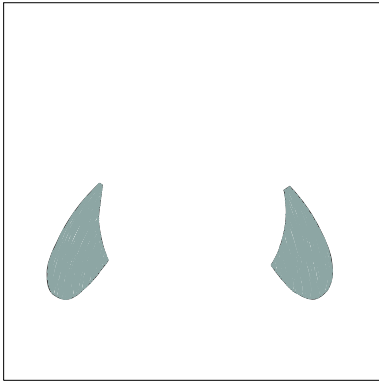
Wilcom EmbroideryStudio - Designing

\*5\*

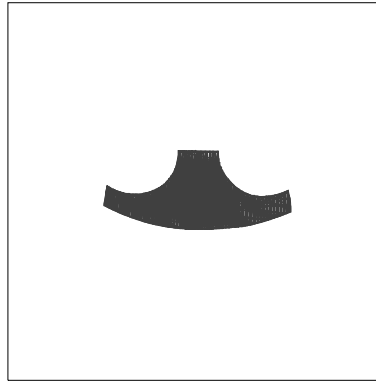
Design: 5

Title:

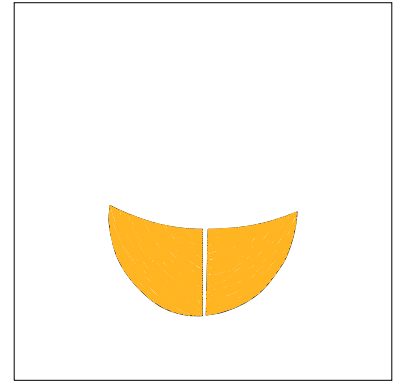
Stitches: 13,700  
Height: 5.28 in  
Width: 5.41 in  
Colors: 6  
Colorway: Colorway 1  
Zoom: 0.35



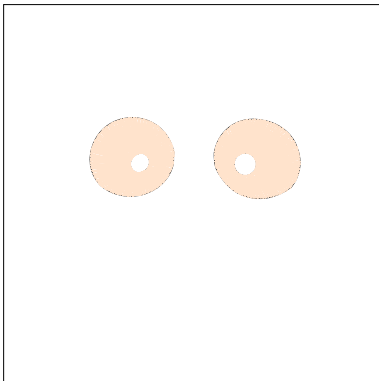
Stop #: 1  
Element:  
Code:  
Name: R141 G166 B164  
Chart:  
Stitches: 1,397  
Thread used: 31.49ft



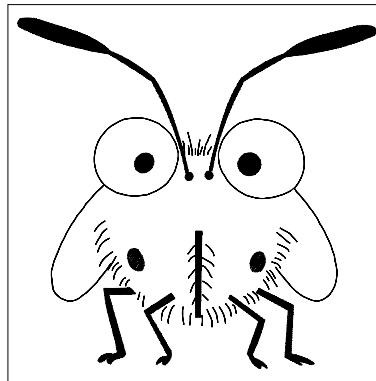
Stop #: 2  
Element:  
Code:  
Name: R64 G64 B64  
Chart:  
Stitches: 1,579  
Thread used: 33.23ft



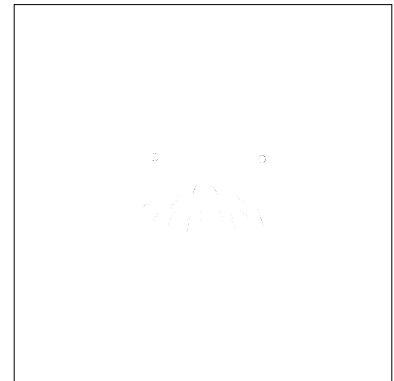
Stop #: 3  
Element:  
Code:  
Name: R255 G181 B34  
Chart:  
Stitches: 2,466  
Thread used: 51.28ft



Stop #: 4  
Element:  
Code:  
Name: R255 G227 B204  
Chart:  
Stitches: 2,911  
Thread used: 57.30ft



Stop #: 5  
Element:  
Code: 8  
Name: Black  
Chart: Default  
Stitches: 4,995  
Thread used: 80.56ft



Stop #: 6  
Element:  
Code: 9  
Name: White  
Chart: Default  
Stitches: 350  
Thread used: 3.91ft

# Production Worksheet

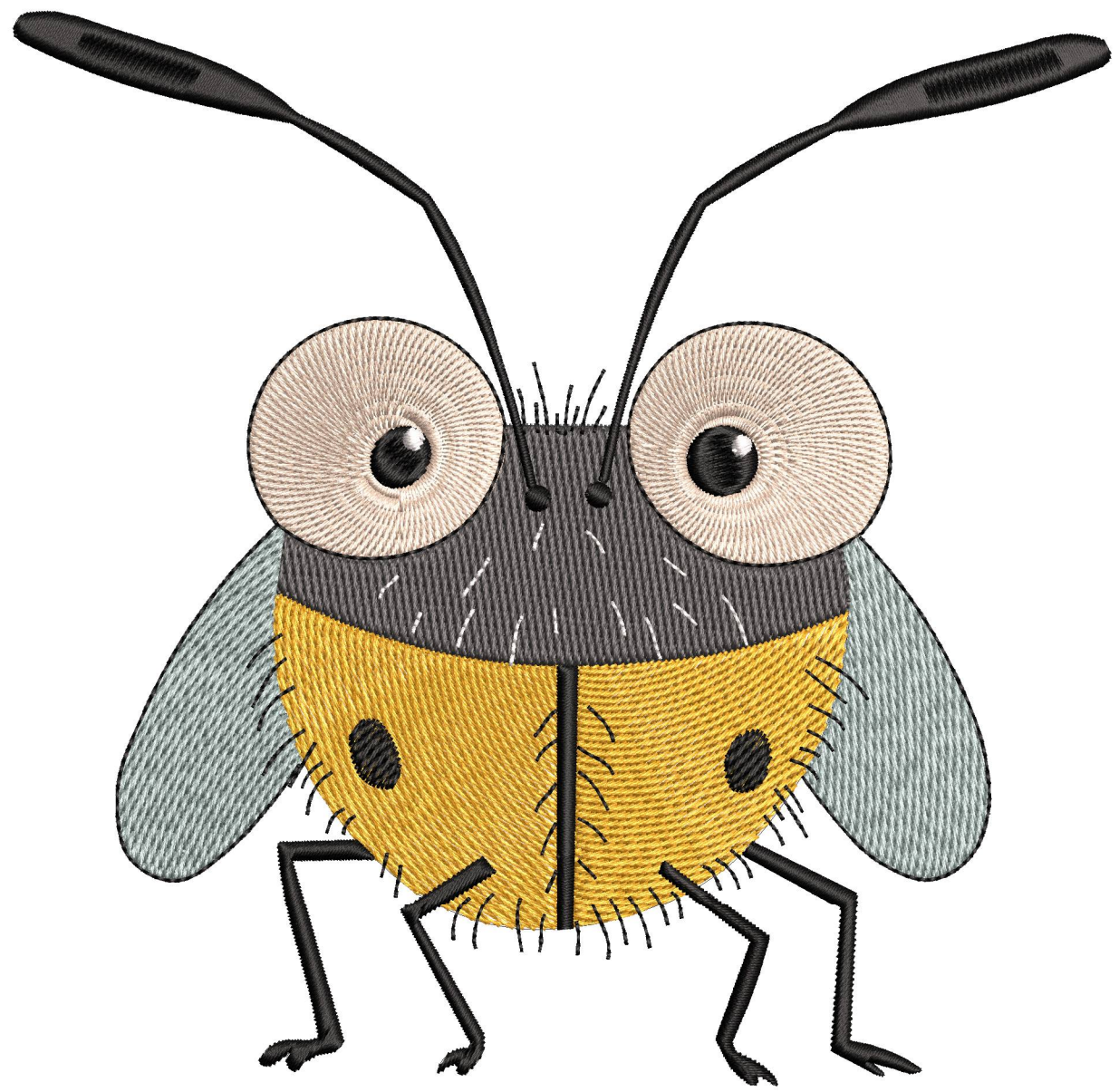
Wilcom EmbroideryStudio - Designing

\*6\*

Design: 6

Title:

Stitches: 17,175  
Height: 6.17 in  
Width: 6.31 in  
Colors: 6  
Colorway: Colorway 1  
Zoom: 1:1



# Production Worksheet

Wilcom EmbroideryStudio - Designing

# \* 6 \*






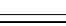
Design: **6**

Title:

Stitches: 17,175  
 Height: 6.17 in  
 Width: 6.31 in  
 Colors: 6  
 Colorway: Colorway 1  
 Zoom: 1:1

Machine format: Tajima  
 Color changes: 5  
 Stops: 6  
 Trims: 89  
 Appliqués: 0  
 Left: 38.5 mm  
 Right: 121.7 mm  
 Up: 74.7 mm  
 Down: 81.9 mm  
 EndX: 1.88 in  
 EndY: -0.17 in  
 Area 38.88 in<sup>2</sup>  
 Max stitch: 11.0 mm  
 Min stitch: 0.2 mm  
 Max jump: 7.0 mm  
 Total thread: 336.99ft  
 Total bobbin: 131.75ft

Stop Sequence:

#	N#	Color	St.	Code	Name	Chart
1.	1		1,841		R141 G166 B164	
2.	5		2,042		R64 G64 B64	
3.	4		3,294		R255 G181 B34	
4.	2		3,673		R255 G227 B204	
5.	8		5,936	8	Black	Default
6.	9		387	9	White	Default

# Color Film

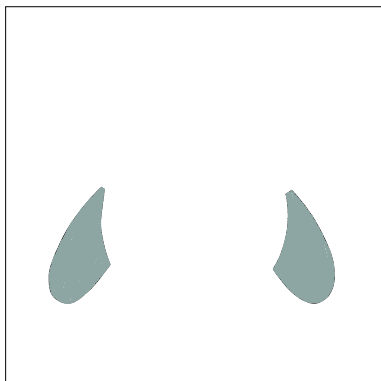
Wilcom EmbroideryStudio - Designing

\*6\*

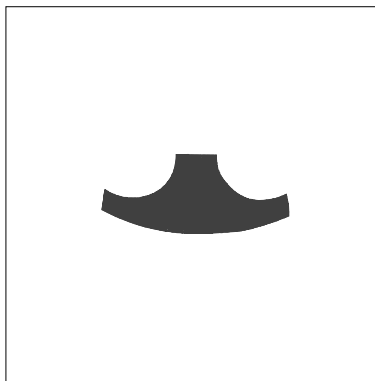
Design: 6

Title:

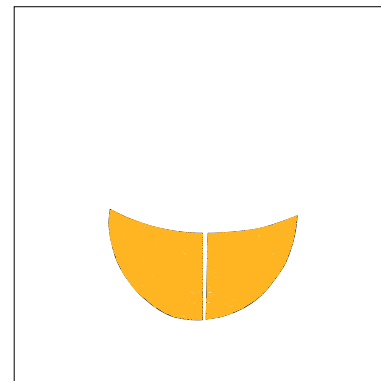
Stitches: 17,175  
Height: 6.17 in  
Width: 6.31 in  
Colors: 6  
Colorway: Colorway 1  
Zoom: 0.30



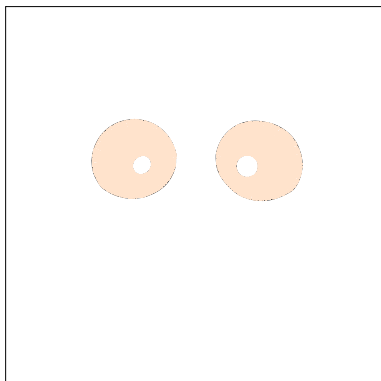
Stop #: 1  
Element:  
Code:  
Name: R141 G166 B164  
Chart:  
Stitches: 1,841  
Thread used: 42.34ft



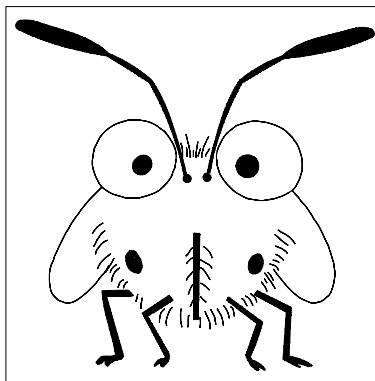
Stop #: 2  
Element:  
Code:  
Name: R64 G64 B64  
Chart:  
Stitches: 2,042  
Thread used: 44.27ft



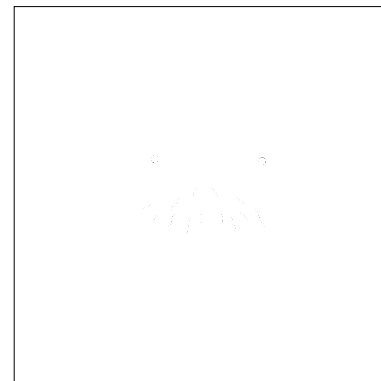
Stop #: 3  
Element:  
Code:  
Name: R255 G181 B34  
Chart:  
Stitches: 3,294  
Thread used: 68.92ft



Stop #: 4  
Element:  
Code:  
Name: R255 G227 B204  
Chart:  
Stitches: 3,673  
Thread used: 74.74ft



Stop #: 5  
Element:  
Code: 8  
Name: Black  
Chart: Default  
Stitches: 5,936  
Thread used: 100.33ft



Stop #: 6  
Element:  
Code: 9  
Name: White  
Chart: Default  
Stitches: 387  
Thread used: 4.41ft

# Production Worksheet

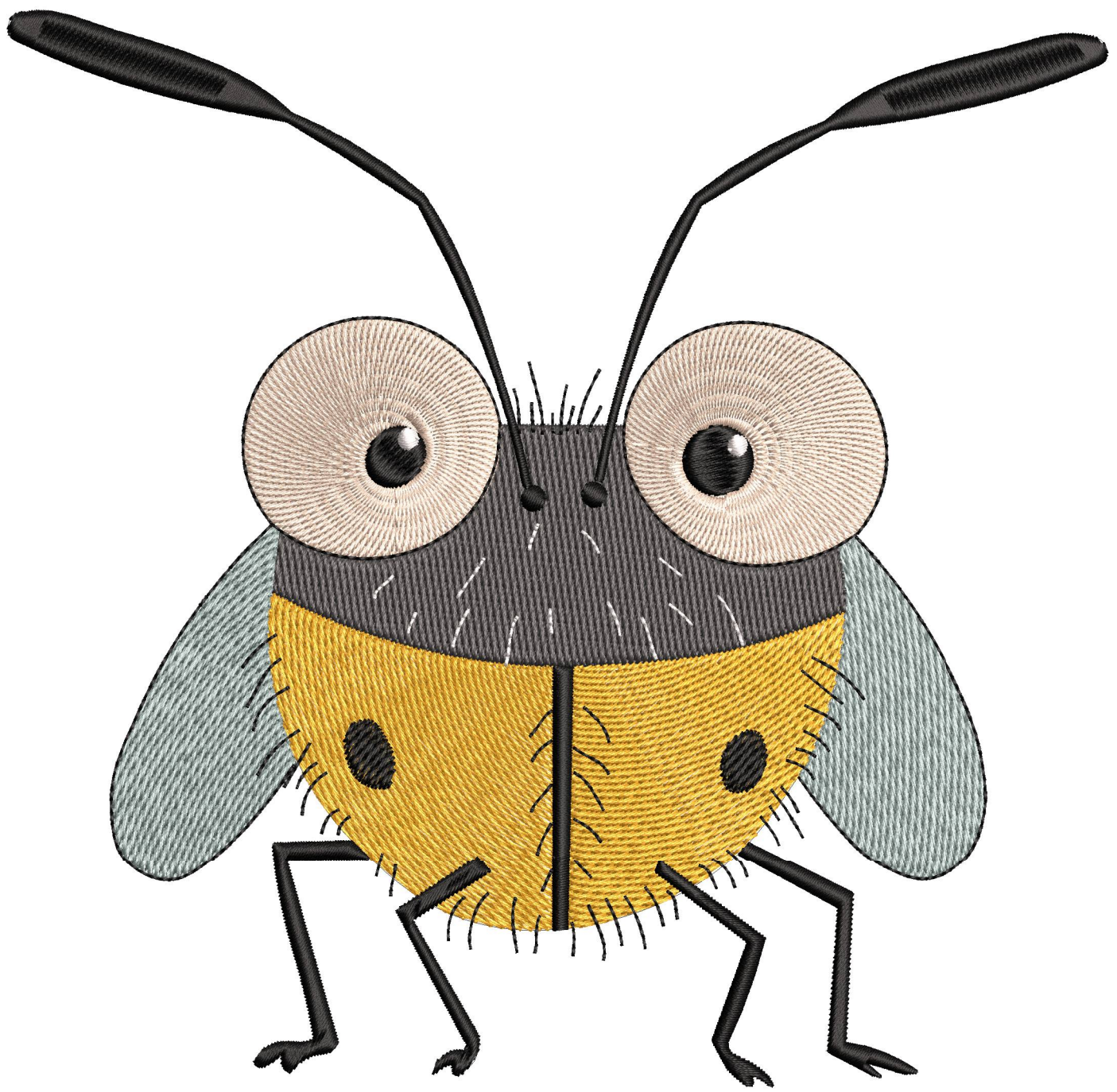
Wilcom EmbroideryStudio - Designing

\*7\*

Design: 7

Title:

Stitches: 20,950  
Height: 7.05 in  
Width: 7.21 in  
Colors: 6  
Colorway: Colorway 1  
Zoom: 1:1



# Production Worksheet

Wilcom EmbroideryStudio - Designing

# \*7\*






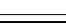
Design: **7**

Title:

Stitches: 20,950  
 Height: 7.05 in  
 Width: 7.21 in  
 Colors: 6  
 Colorway: Colorway 1  
 Zoom: 1:1

Machine format: Tajima  
 Color changes: 5  
 Stops: 6  
 Trims: 89  
 Appliqués: 0  
 Left: 44.2 mm  
 Right: 138.8 mm  
 Up: 85.4 mm  
 Down: 93.6 mm  
 EndX: 2.13 in  
 EndY: -0.19 in  
 Area 50.77 in<sup>2</sup>  
 Max stitch: 10.2 mm  
 Min stitch: 0.0 mm  
 Max jump: 7.0 mm  
 Total thread: 425.44ft  
 Total bobbin: 169.48ft

Stop Sequence:

#	N#	Color	St.	Code	Name	Chart
1.	1		2,322		R141 G166 B164	
2.	5		2,518		R64 G64 B64	
3.	4		4,198		R255 G181 B34	
4.	2		4,666		R255 G227 B204	
5.	8		6,828	8	Black	Default
6.	9		416	9	White	Default

# Color Film

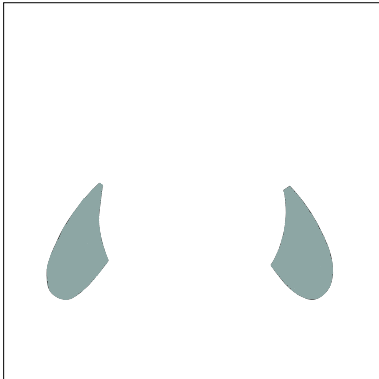
Wilcom EmbroideryStudio - Designing

\*7\*

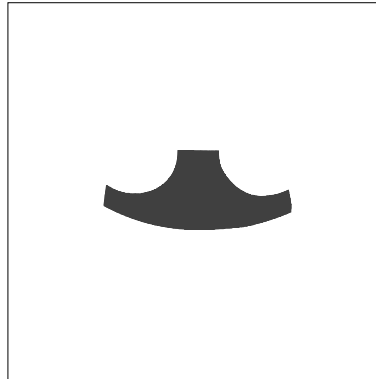
Design: 7

Title:

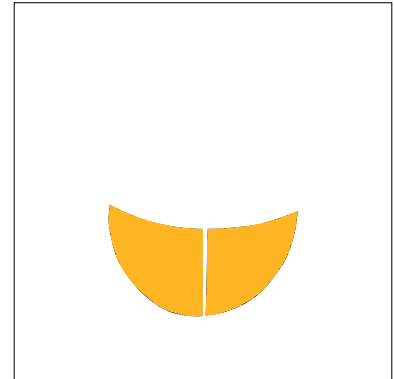
Stitches: 20,950  
Height: 7.05 in  
Width: 7.21 in  
Colors: 6  
Colorway: Colorway 1  
Zoom: 0.26



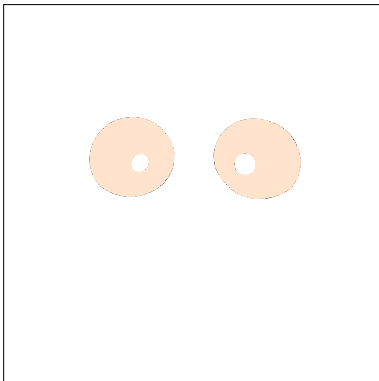
Stop #: 1  
Element:  
Code:  
Name: R141 G166 B164  
Chart:  
Stitches: 2,322  
Thread used: 54.41ft



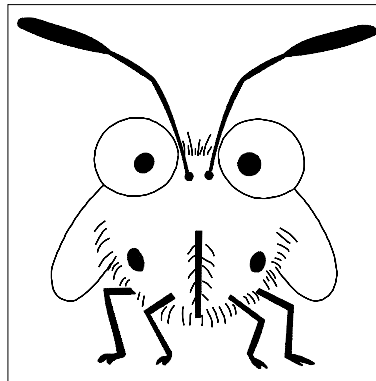
Stop #: 2  
Element:  
Code:  
Name: R64 G64 B64  
Chart:  
Stitches: 2,518  
Thread used: 56.24ft



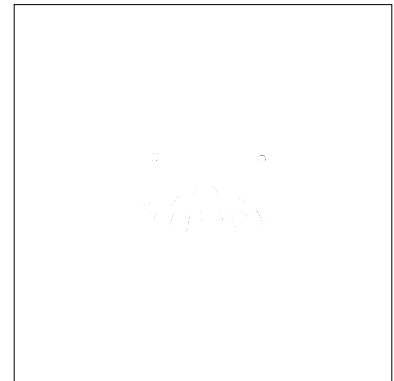
Stop #: 3  
Element:  
Code:  
Name: R255 G181 B34  
Chart:  
Stitches: 4,198  
Thread used: 89.11ft



Stop #: 4  
Element:  
Code:  
Name: R255 G227 B204  
Chart:  
Stitches: 4,666  
Thread used: 97.44ft



Stop #: 5  
Element:  
Code: 8  
Name: Black  
Chart: Default  
Stitches: 6,828  
Thread used: 121.38ft



Stop #: 6  
Element:  
Code: 9  
Name: White  
Chart: Default  
Stitches: 416  
Thread used: 4.89ft