



Creative Fabrica

**Embroidery Design
Sewing Information**

www.creativefabrica.com/embroidery/

© Creative Fabrica

Stitches: 2112
Colors: 1
Color changes: 0
Stops: 1

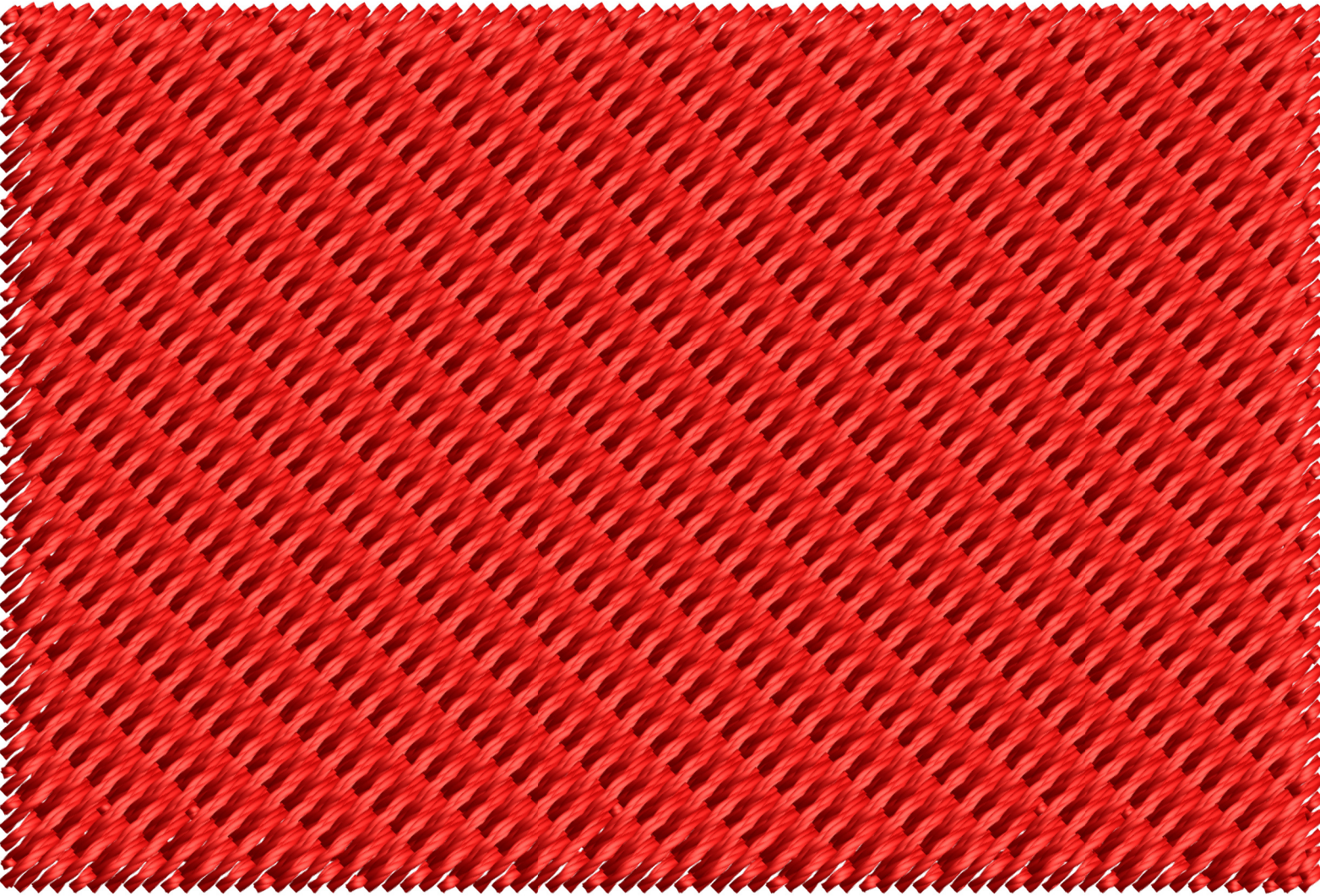
Machine: Tajima
Trims: 1

Fabric: Fabric Name
Required Stabilizer:
Stabilizer

042ET2X2

Colorway: Colorway 1

#	St.	Descr	Code
1.	■	2110 Red 3	
Total Bobbin:			16.61ft



Stitches: 2771
Colors: 1
Color changes: 0
Stops: 1

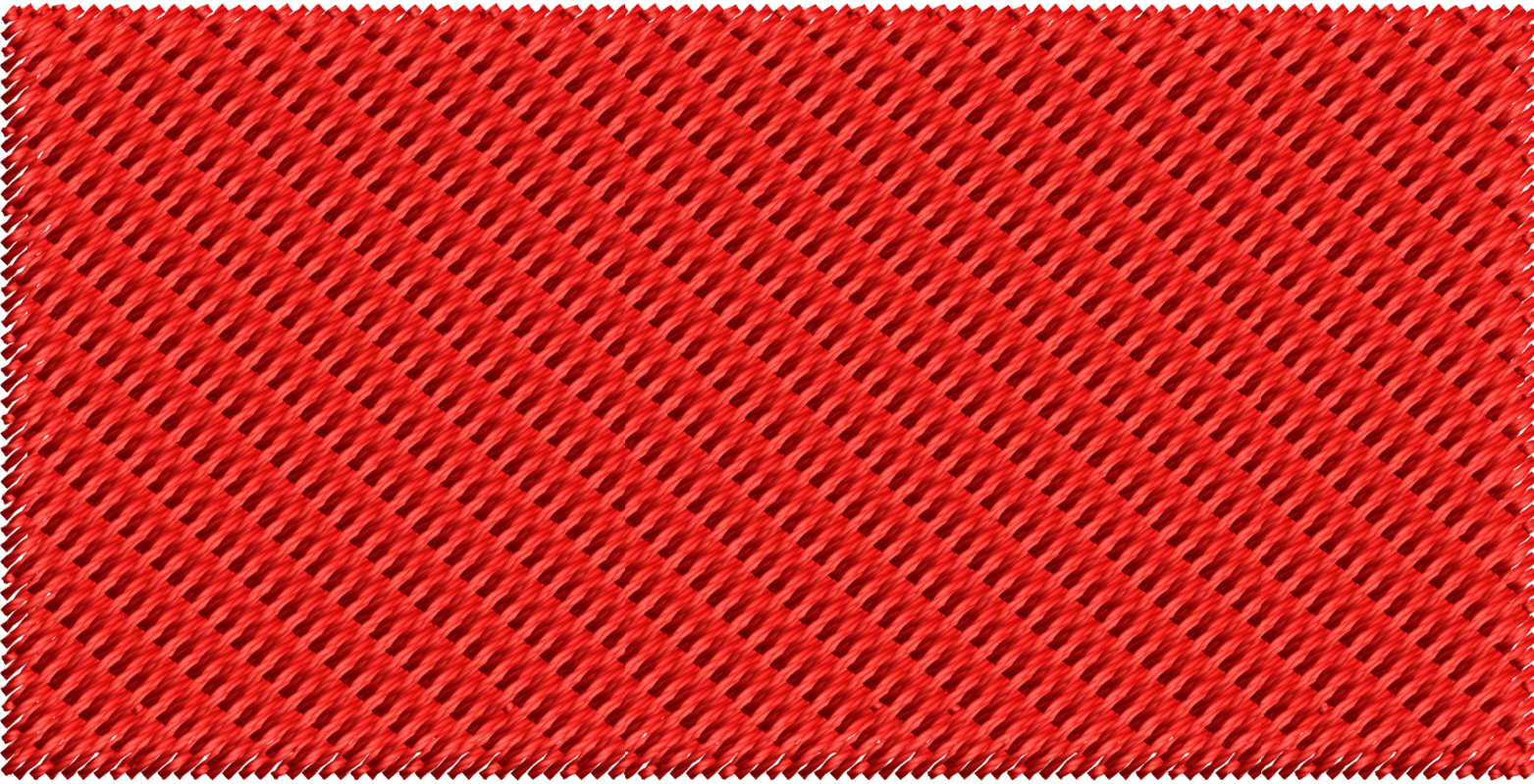
Machine: Tajima
Trims: 1

Fabric: Fabric Name
Required Stabilizer:
Stabilizer

042ET2X2V2

Colorway: Colorway 1

#	St.	Descr	Code
1.	2769	Red	3
Total Bobbin:			22.14ft



Stitches: 3991
Colors: 1
Color changes: 0
Stops: 1

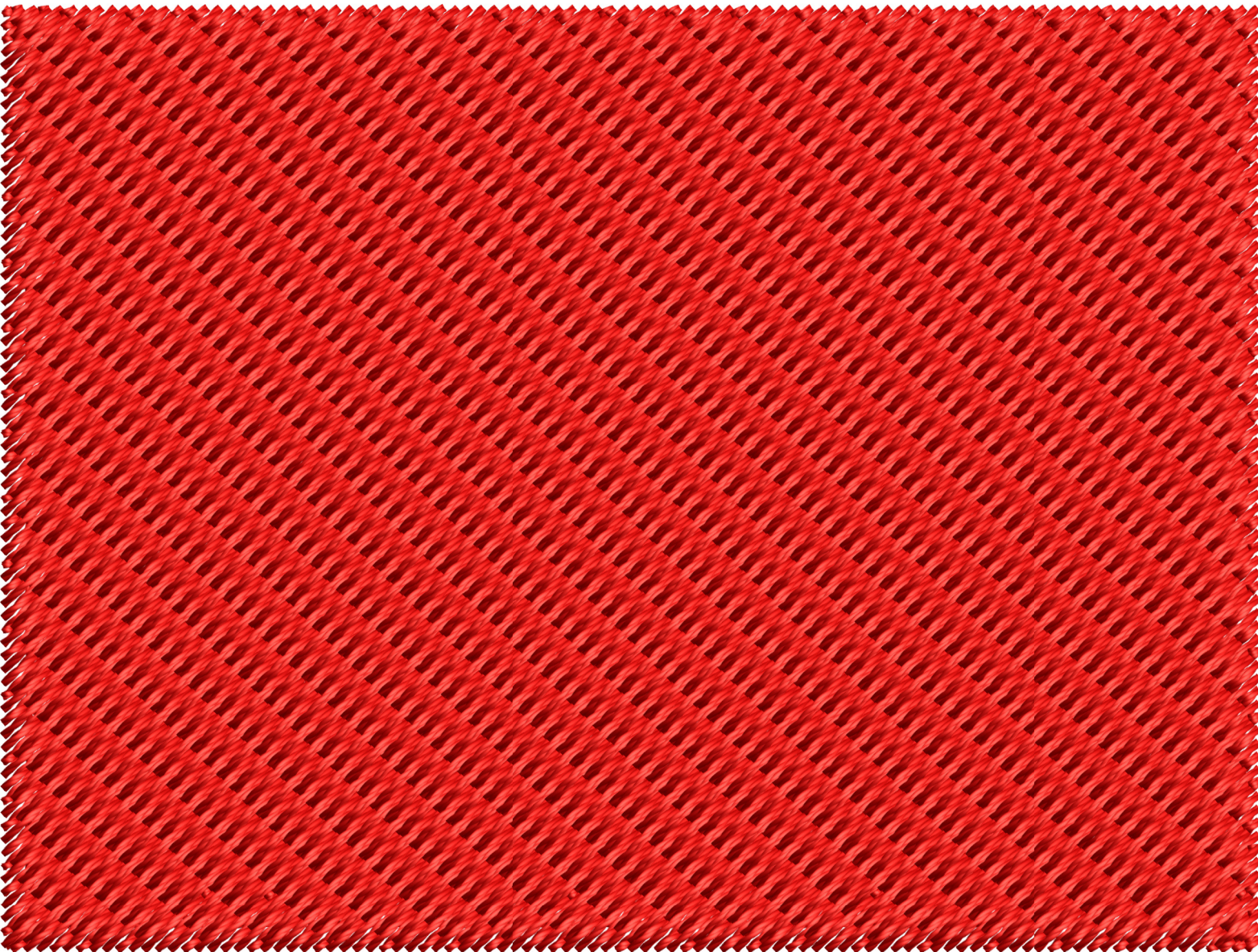
Machine: Tajima
Trims: 1

Fabric: Fabric Name
Required Stabilizer:
Stabilizer

042ET2X2V3

Colorway: Colorway 1

#	St.	Descr	Code
1.	3989	Red	3
Total Bobbin:			33.00ft



Stitches: 3420
Colors: 1
Color changes: 0
Stops: 1

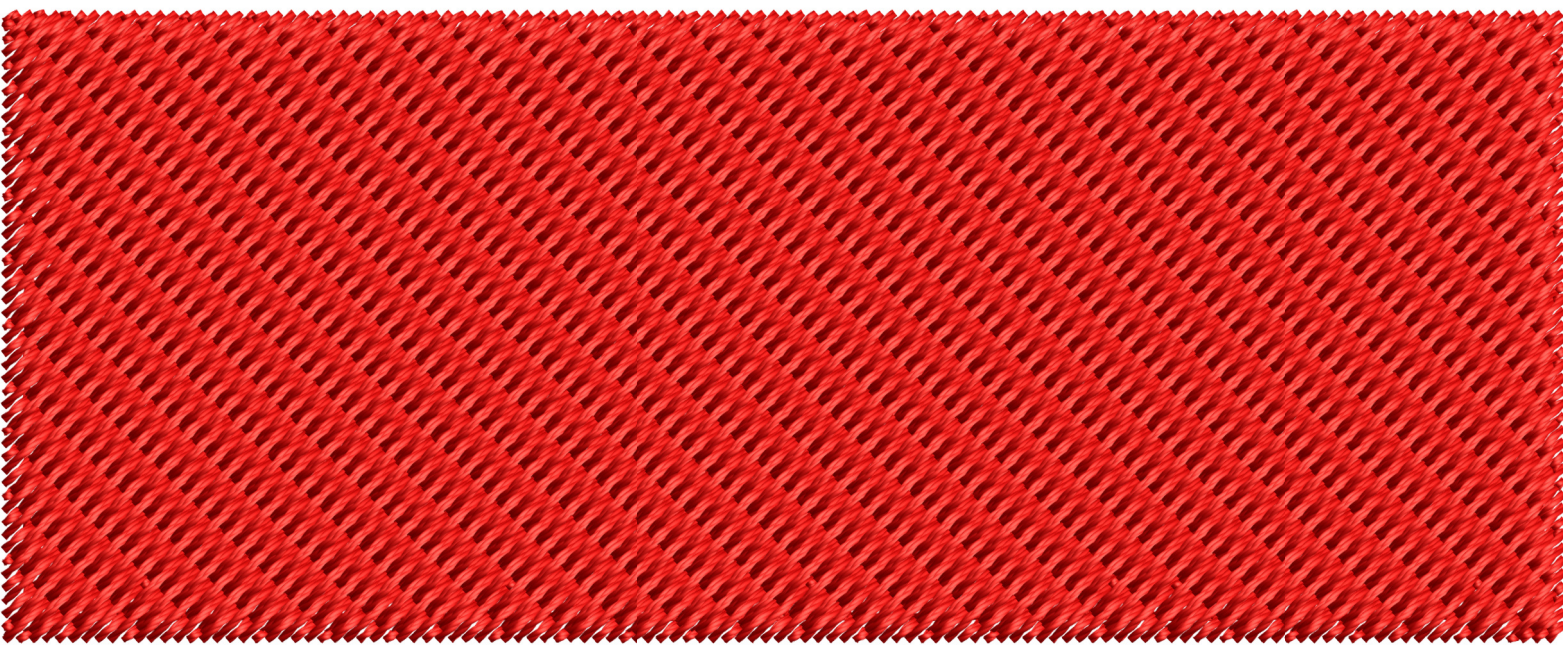
Machine: Tajima
Trims: 1

Fabric: Fabric Name
Required Stabilizer:
Stabilizer

042ET3X3

Colorway: Colorway 1

#	St.	Descr	Code
1.	■	3418 Red 3	
Total Bobbin:			27.66ft



Stitches: 4073
Colors: 1
Color changes: 0
Stops: 1

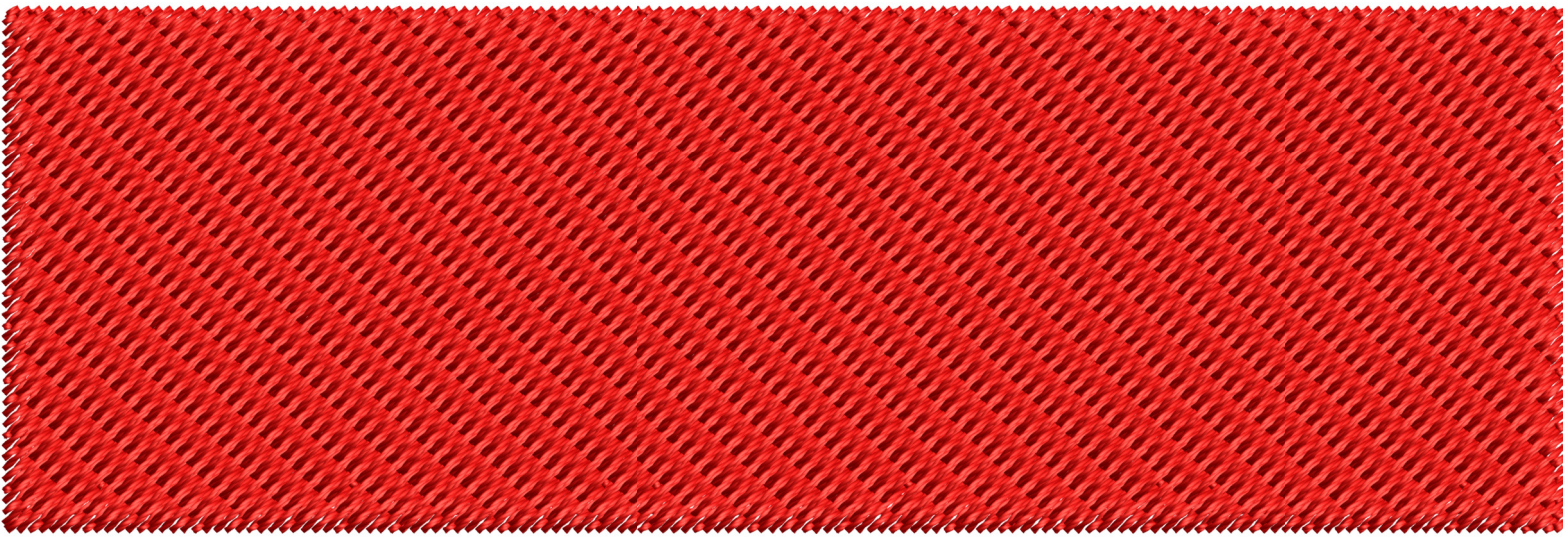
Machine: Tajima
Trims: 1

Fabric: Fabric Name
Required Stabilizer:
Stabilizer

042ET3X3V2

Colorway: Colorway 1

#	St.	Descr	Code
1.	■	4071 Red 3	
Total Bobbin:			33.19ft



Stitches: 4928
Colors: 1
Color changes: 0
Stops: 1

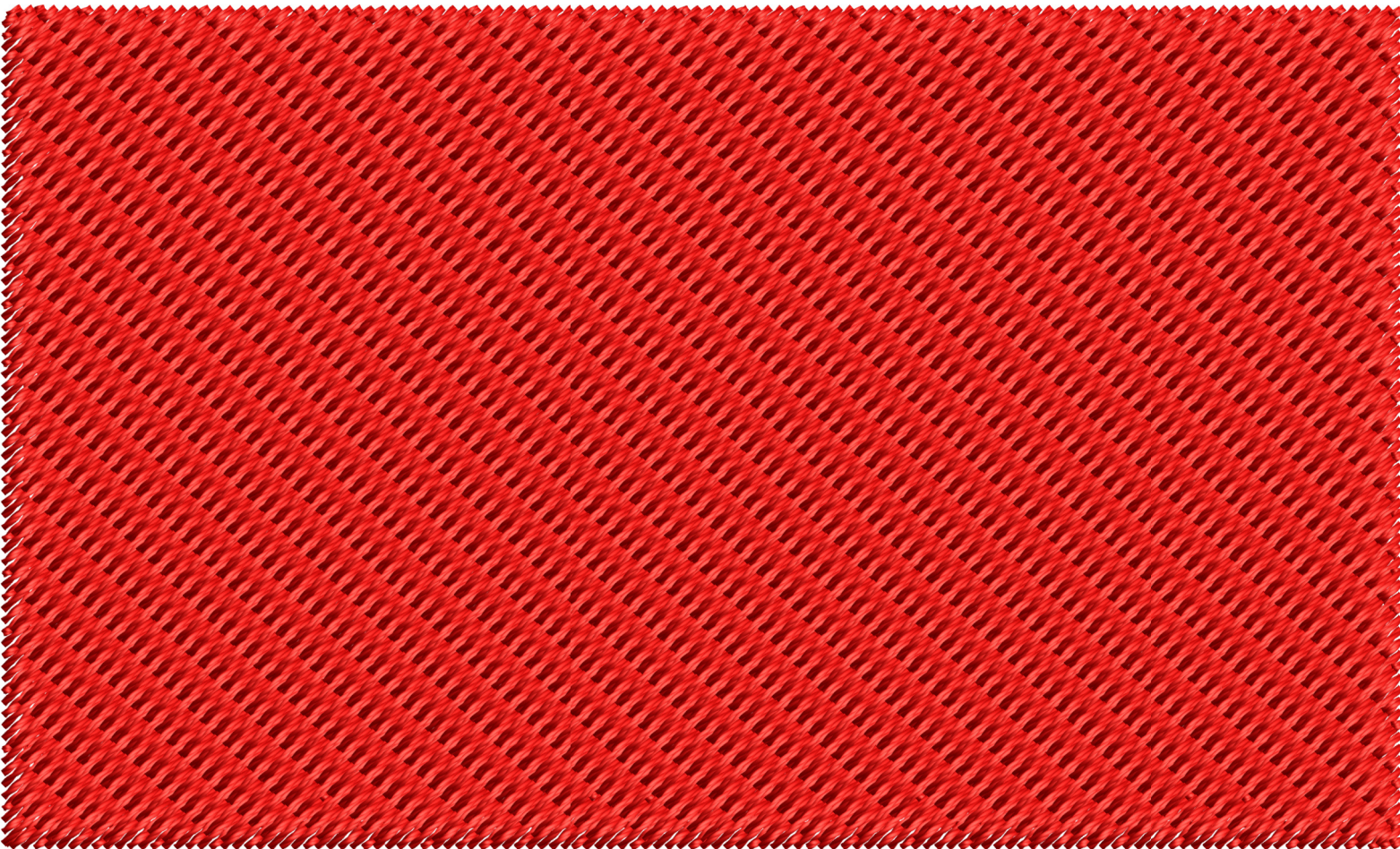
Machine: Tajima
Trims: 1

Fabric: Fabric Name
Required Stabilizer:
Stabilizer

042ET3X3V3

Colorway: Colorway 1

#	St.	Descr	Code
1.	4926	Red 3	
Total Bobbin:			41.22ft



Stitches: 5874
Colors: 1
Color changes: 0
Stops: 1

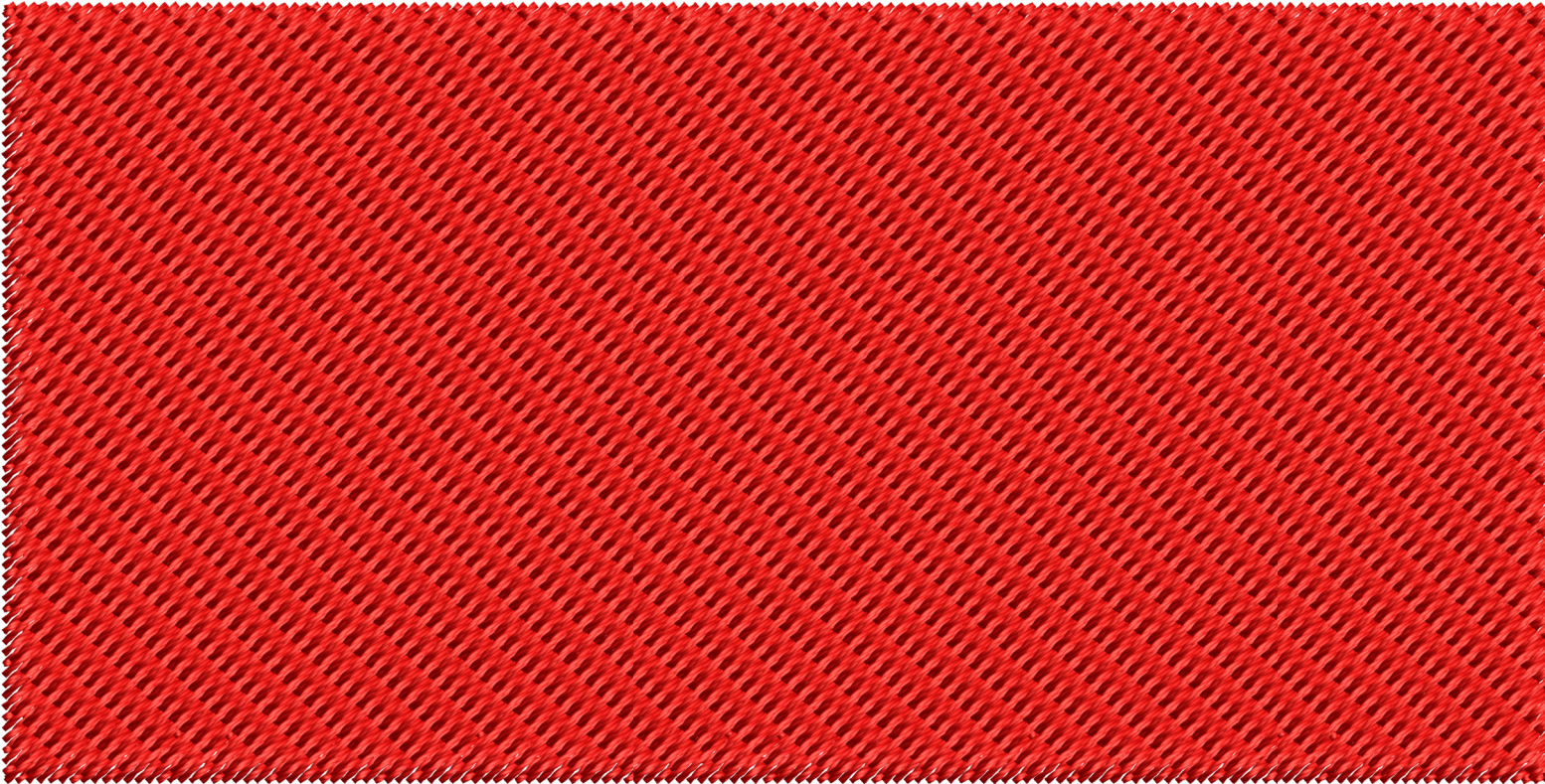
Machine: Tajima
Trims: 1

Fabric: Fabric Name
Required Stabilizer:
Stabilizer

042ET3X3V4

Colorway: Colorway 1

#	St.	Descr	Code
1.	5872	Red 3	
Total Bobbin:			49.46ft



Stitches: 6117
Colors: 1
Color changes: 0
Stops: 1

Machine: Tajima
Trims: 1

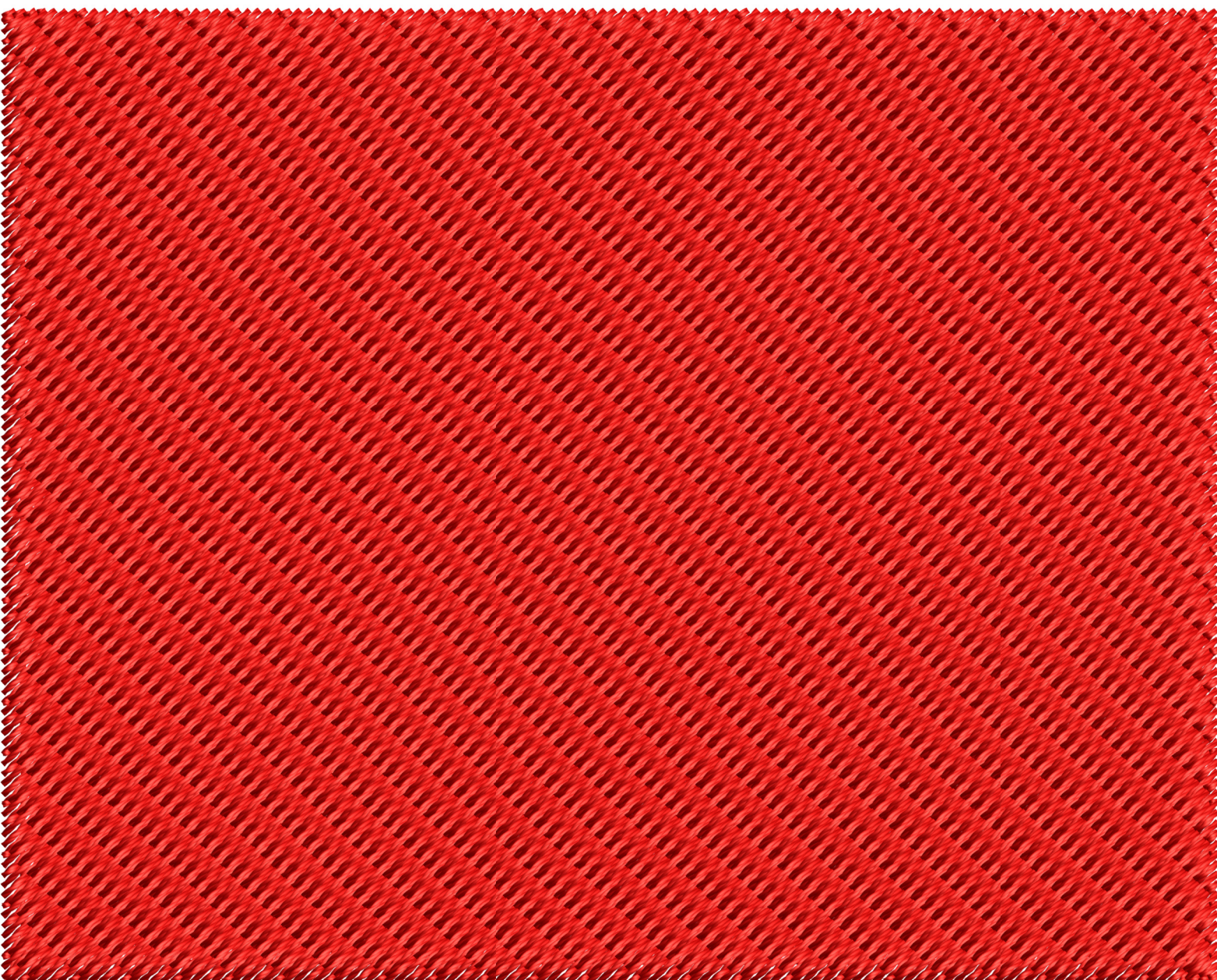
Fabric: Fabric Name
Required Stabilizer:
Stabilizer

042ET3X3V5

Colorway: Colorway 1

#	St.	Descr	Code
1.	6115	Red 3	

Total Bobbin: 54.83ft



Stitches: 7285
Colors: 1
Color changes: 0
Stops: 1

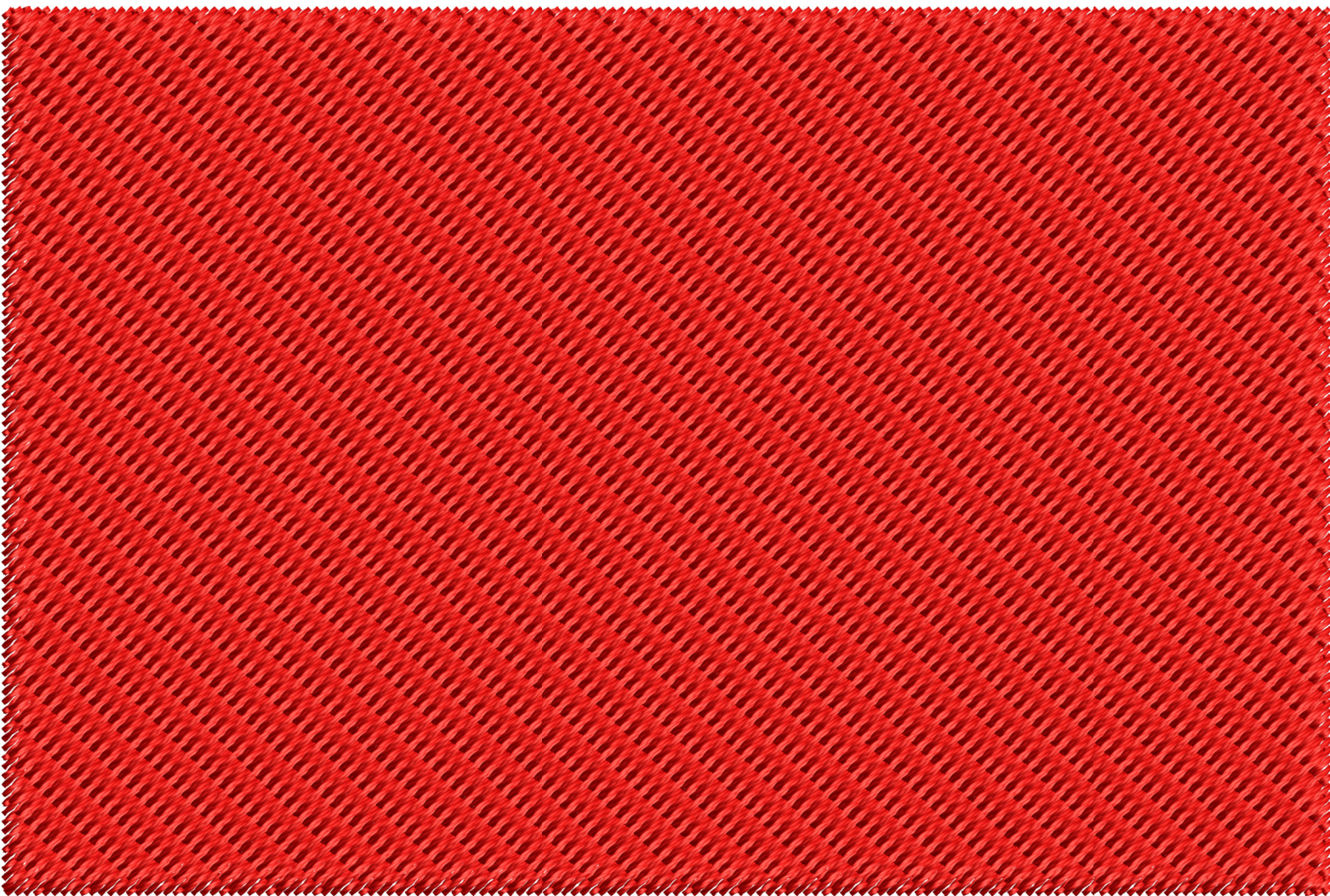
Machine: Tajima
Trims: 1

Fabric: Fabric Name
Required Stabilizer:
Stabilizer

042ET3X3V6

Colorway: Colorway 1

#	St.	Descr	Code
1.	7283	Red 3	
Total Bobbin:			65.79ft



Stitches: 8991
Colors: 1
Color changes: 0
Stops: 1

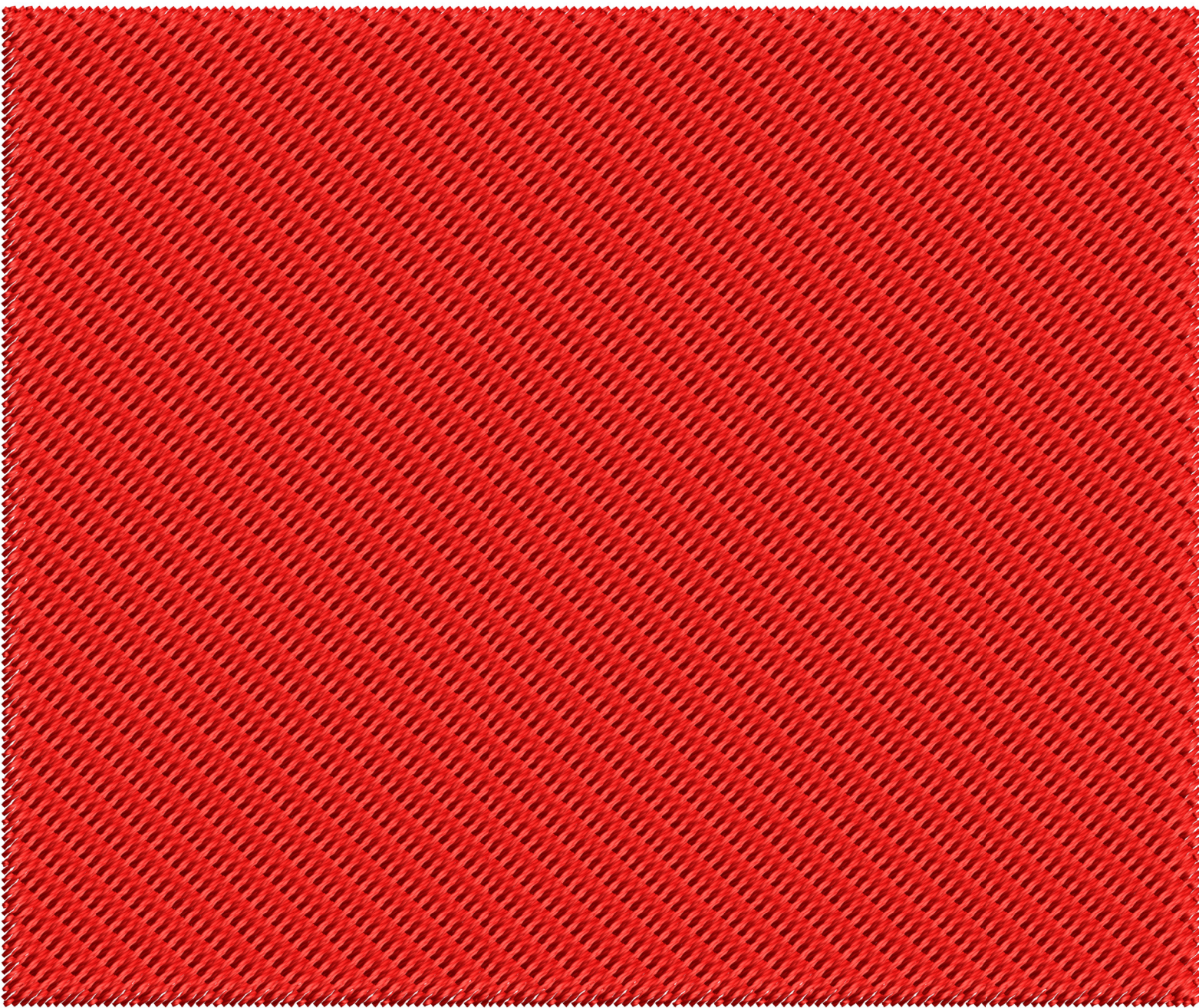
Machine: Tajima
Trims: 1

Fabric: Fabric Name
Required Stabilizer:
Stabilizer

042ET3X3V7

Colorway: Colorway 1

#	St.	Descr	Code
1.	8989	Red 3	
Total Bobbin:			82.07ft



Stitches: 4727
Colors: 1
Color changes: 0
Stops: 1

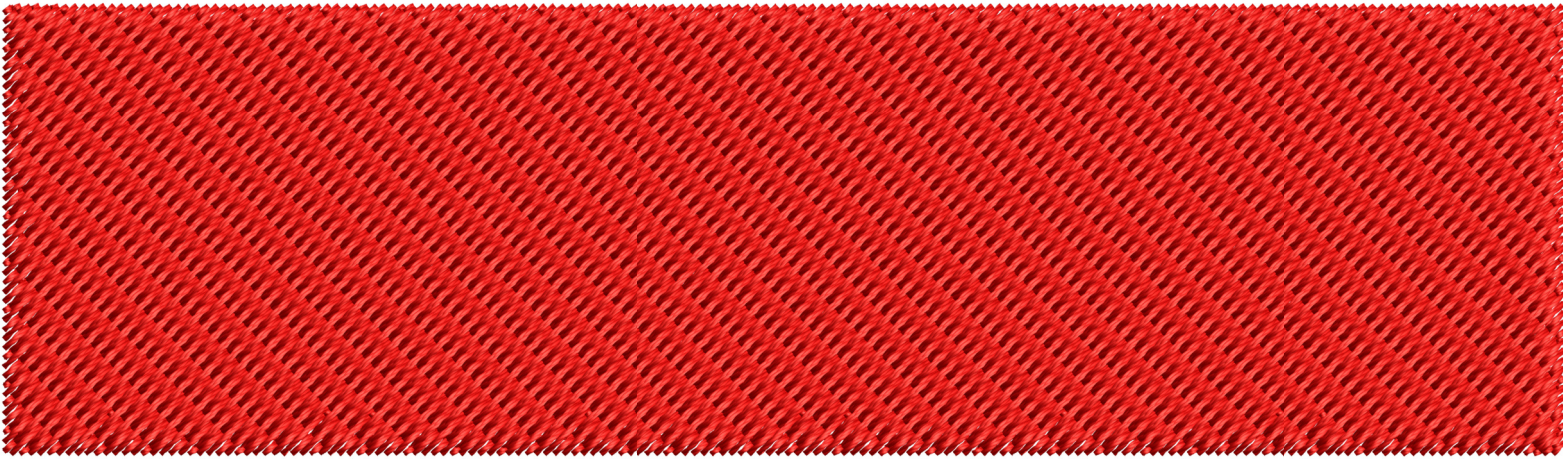
Machine: Tajima
Trims: 1

Fabric: Fabric Name
Required Stabilizer:
Stabilizer

042ET4X4

Colorway: Colorway 1

#	St.	Descr	Code
1.	■	4725 Red 3	
Total Bobbin:			38.72ft



Stitches: 5252
Colors: 1
Color changes: 0
Stops: 1

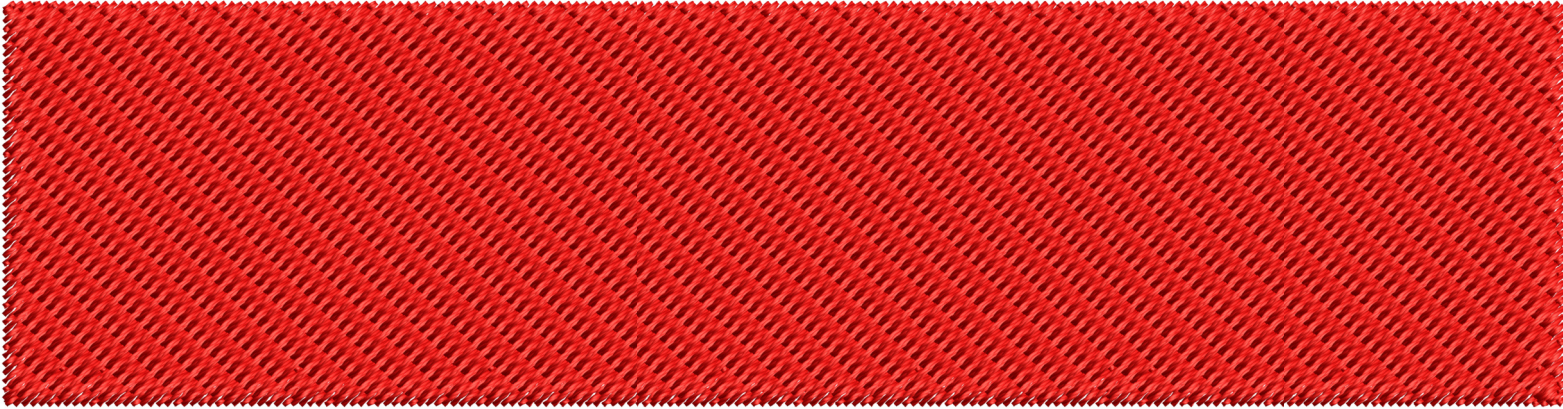
Machine: Tajima
Trims: 1

Fabric: Fabric Name
Required Stabilizer:
Stabilizer

042ET4X4V2

Colorway: Colorway 1

#	St.	Descr	Code
1.	5250	Red	3
Total Bobbin:			43.14ft



Stitches: 6818
Colors: 1
Color changes: 0
Stops: 1

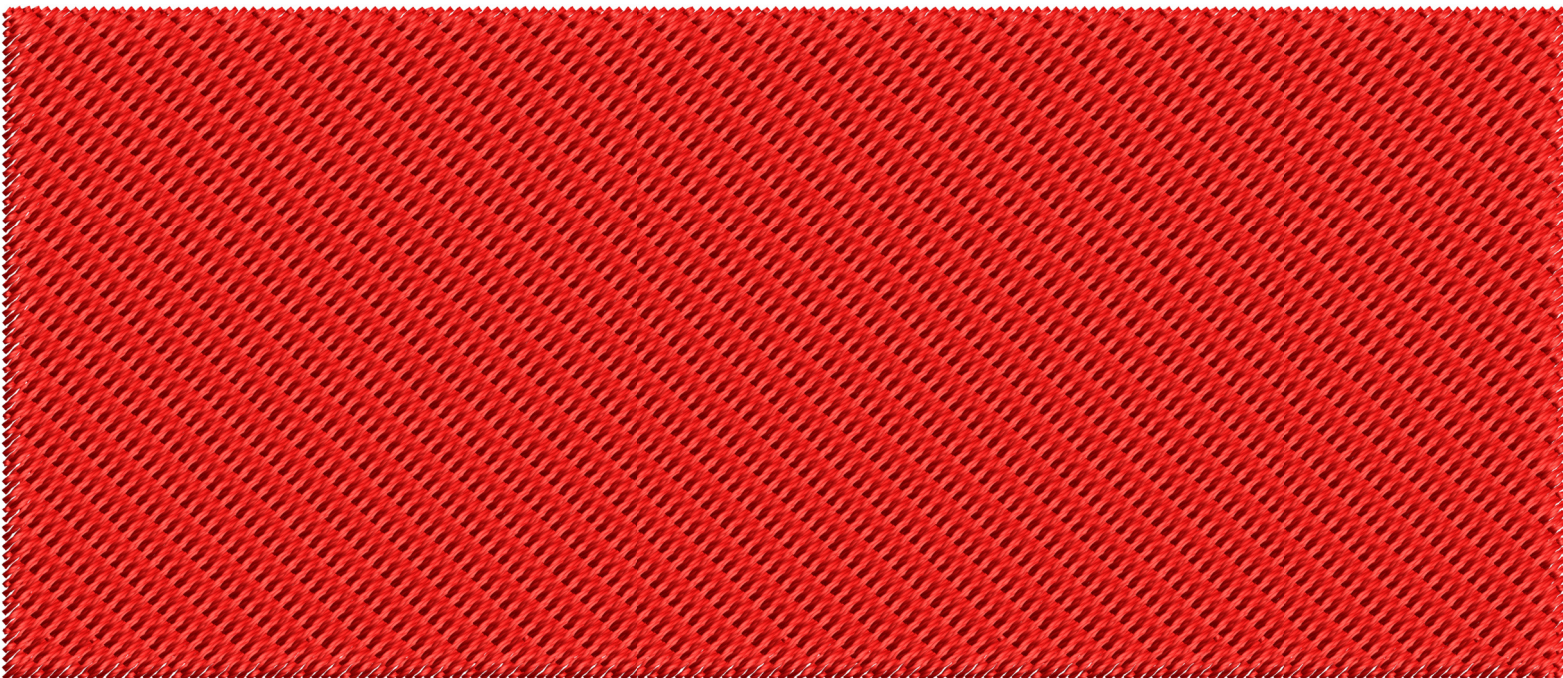
Machine: Tajima
Trims: 1

Fabric: Fabric Name
Required Stabilizer:
Stabilizer

042ET4X4V3

Colorway: Colorway 1

#	St.	Descr	Code
1.	■	6816 Red 3	
Total Bobbin:			57.70ft



Stitches: 7577
Colors: 1
Color changes: 0
Stops: 1

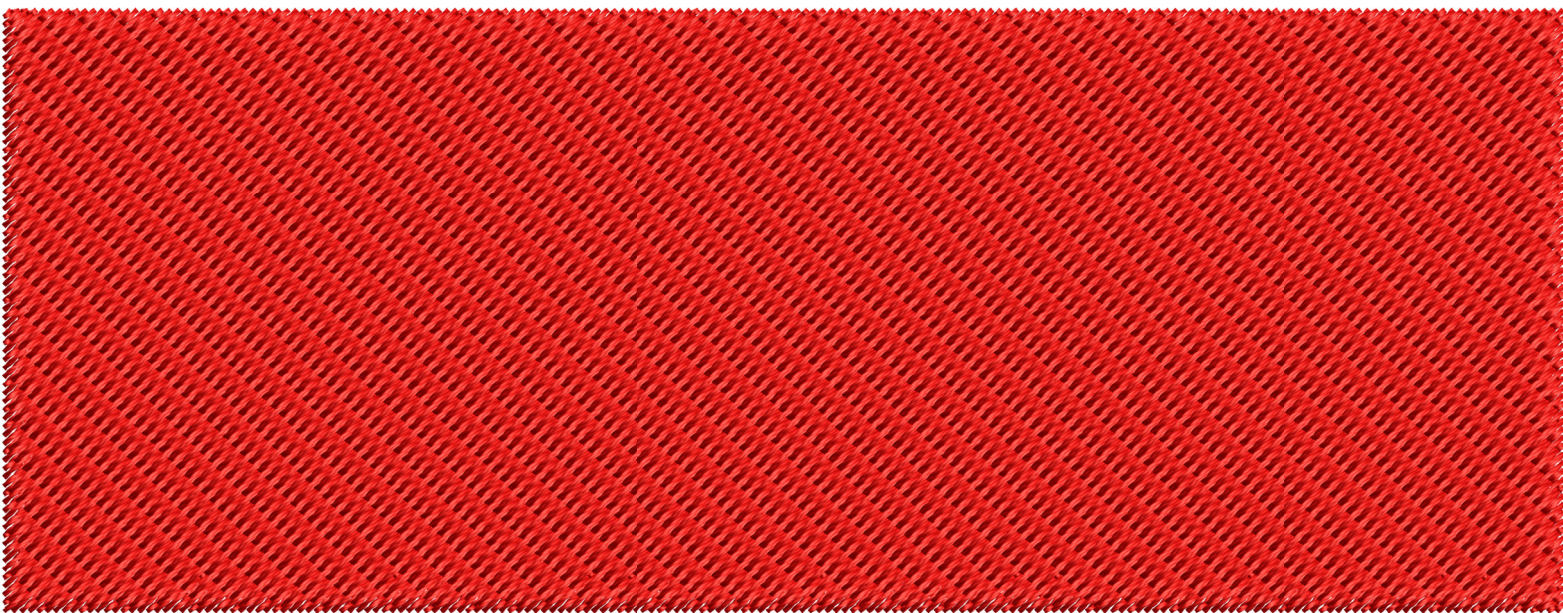
Machine: Tajima
Trims: 1

Fabric: Fabric Name
Required Stabilizer:
Stabilizer

042ET4X4V4

Colorway: Colorway 1

#	St.	Descr	Code
1.	■	7575 Red 3	
Total Bobbin:			64.30ft



Stitches: 8456
Colors: 1
Color changes: 0
Stops: 1

Machine: Tajima
Trims: 1

Fabric: Fabric Name
Required Stabilizer:
Stabilizer

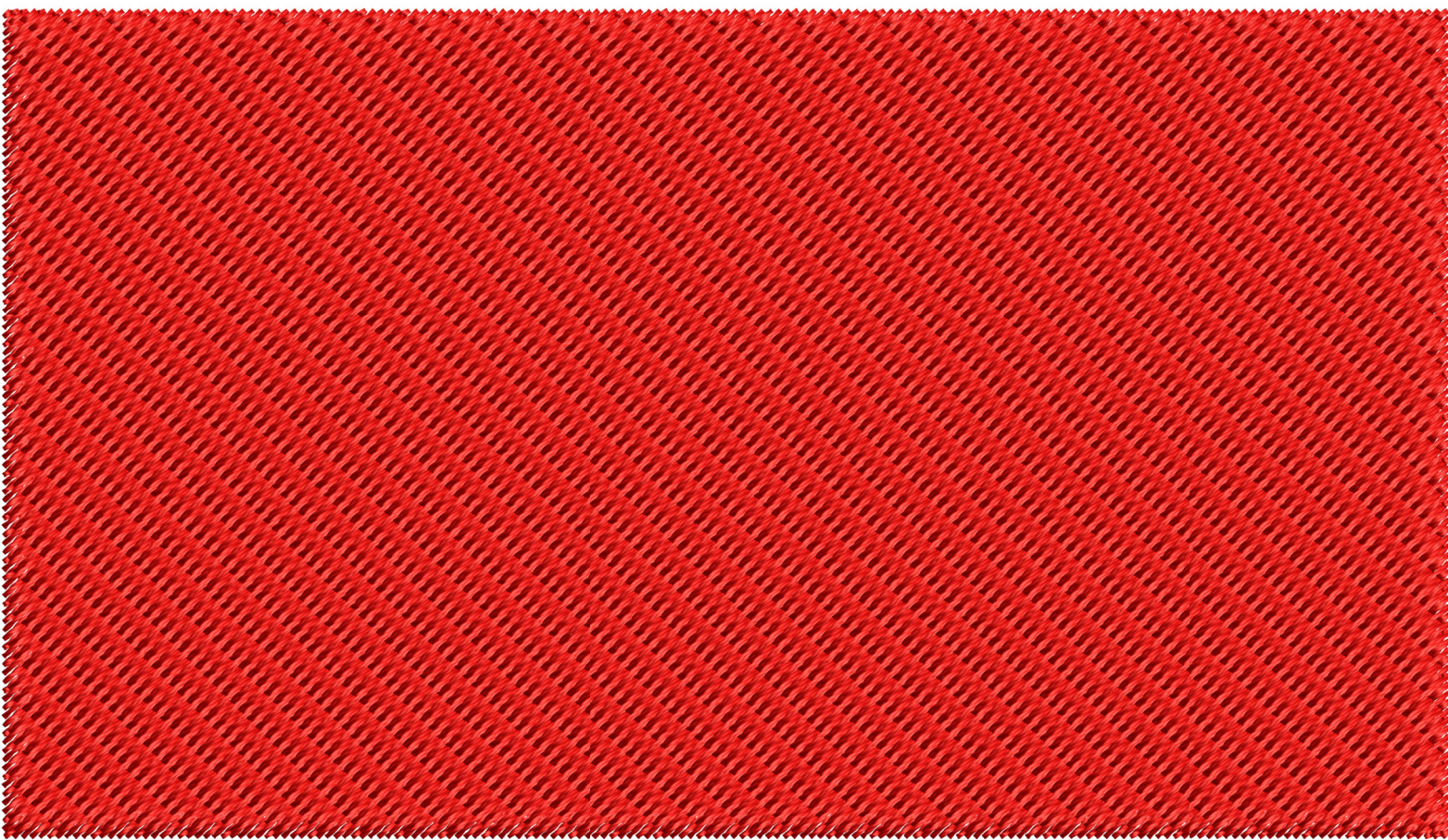
042ET4X4V5

Colorway: Colorway 1

St. Descr Code

1. ■ 8454 Red 3

Total Bobbin: 76.75ft



Stitches: 9390
Colors: 1
Color changes: 0
Stops: 1

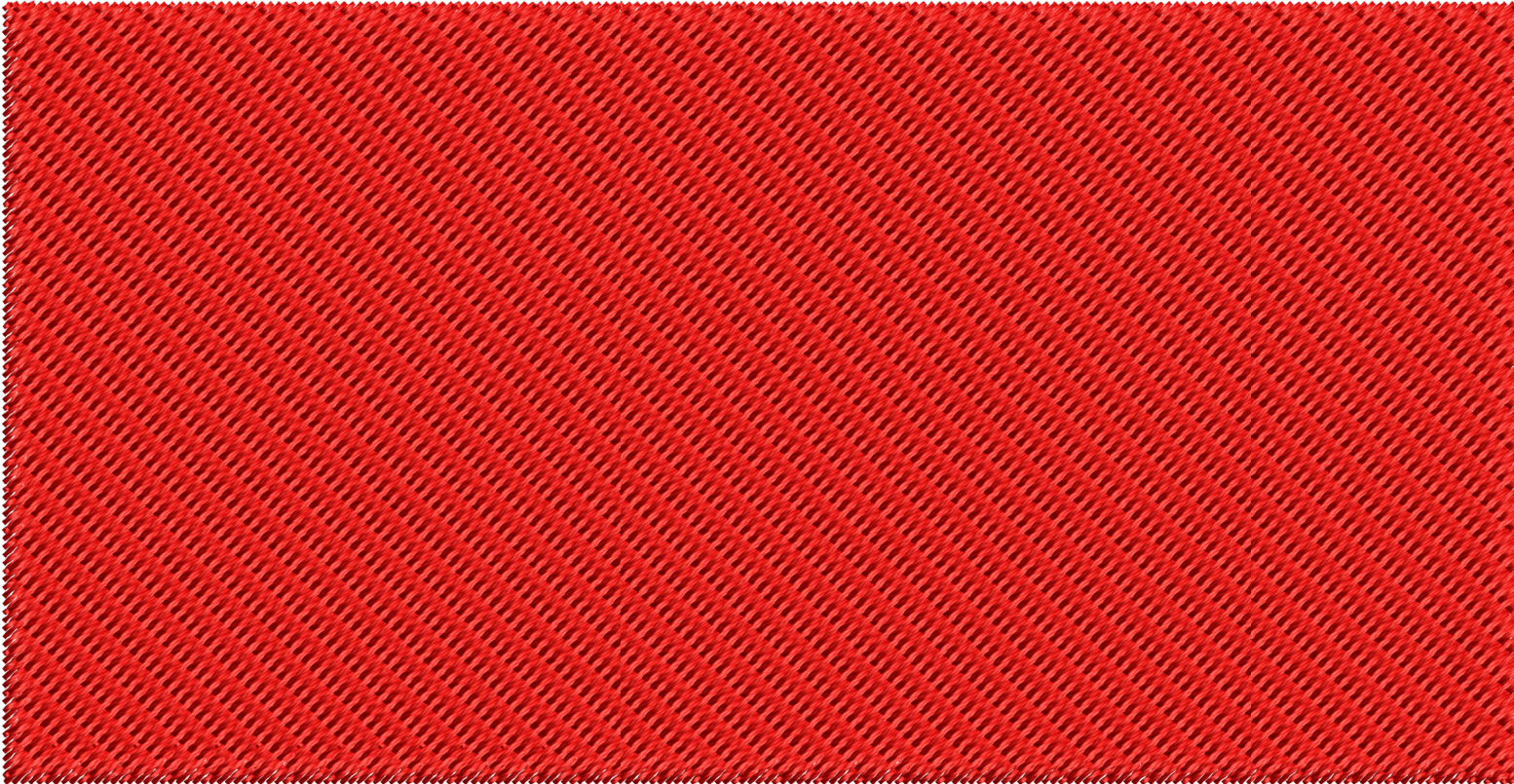
Machine: Tajima
Trims: 1

Fabric: Fabric Name
Required Stabilizer:
Stabilizer

042ET4X4V6

Colorway: Colorway 1

#	St.	Descr	Code
1.	■	9388 Red 3	
Total Bobbin:		85.51ft	



Stitches: 10434
Colors: 1
Color changes: 0
Stops: 1

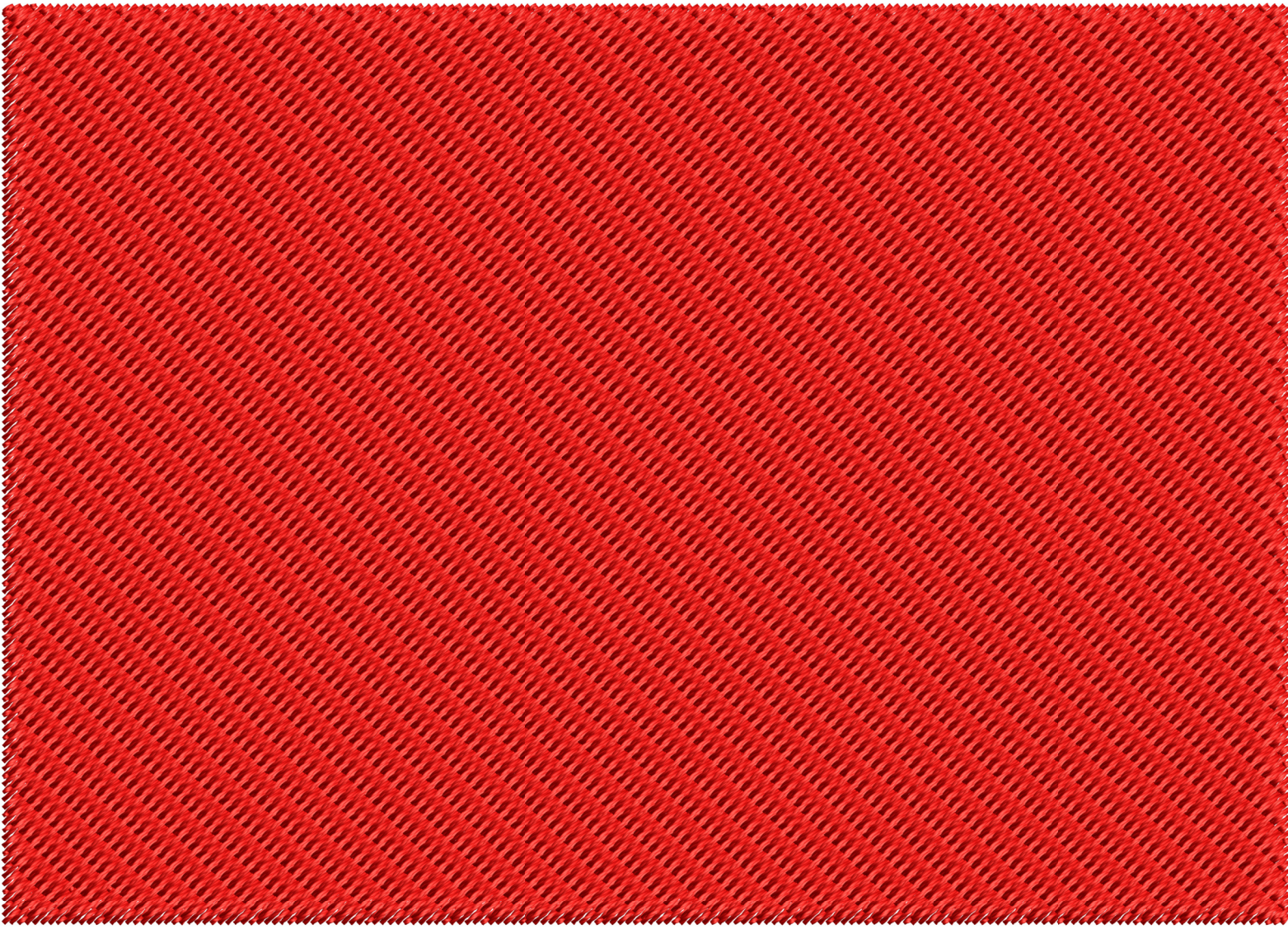
Machine: Tajima
Trims: 1

Fabric: Fabric Name
Required Stabilizer:
Stabilizer

042ET4X4V7

Colorway: Colorway 1

#	St.	Descr	Code
1.	10432	Red 3	
Total Bobbin:			95.73ft



Stitches: 11593
Colors: 1
Color changes: 0
Stops: 1

Machine: Tajima
Trims: 1

Fabric: Fabric Name
Required Stabilizer:
Stabilizer

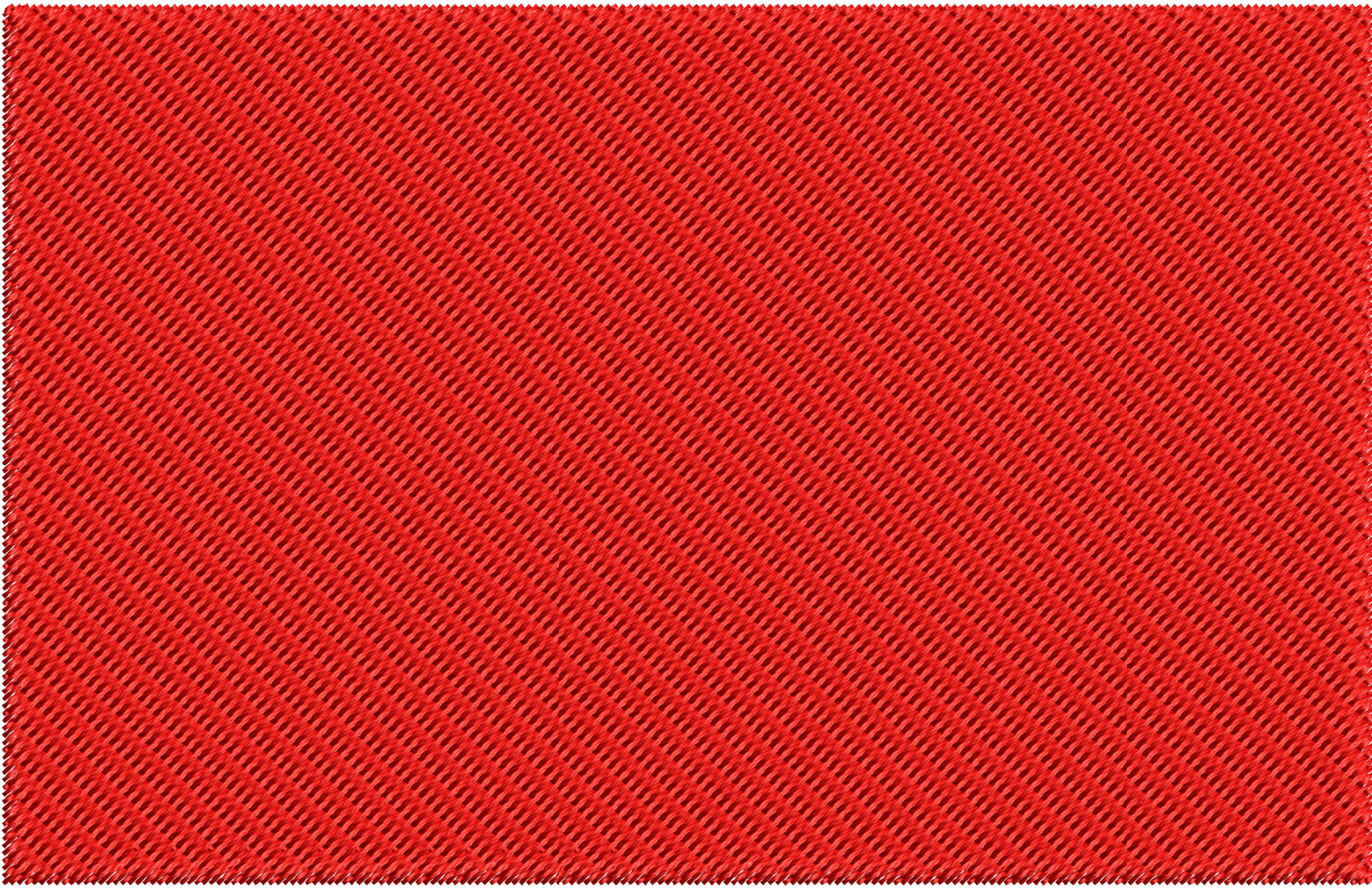
042ET4X4V8

Colorway: Colorway 1

#	St.	Descr	Code
---	-----	-------	------

1.	■	11591 Red 3	
----	---	-------------	--

Total Bobbin: 106.66ft



Stitches: 11814
Colors: 1
Color changes: 0
Stops: 1

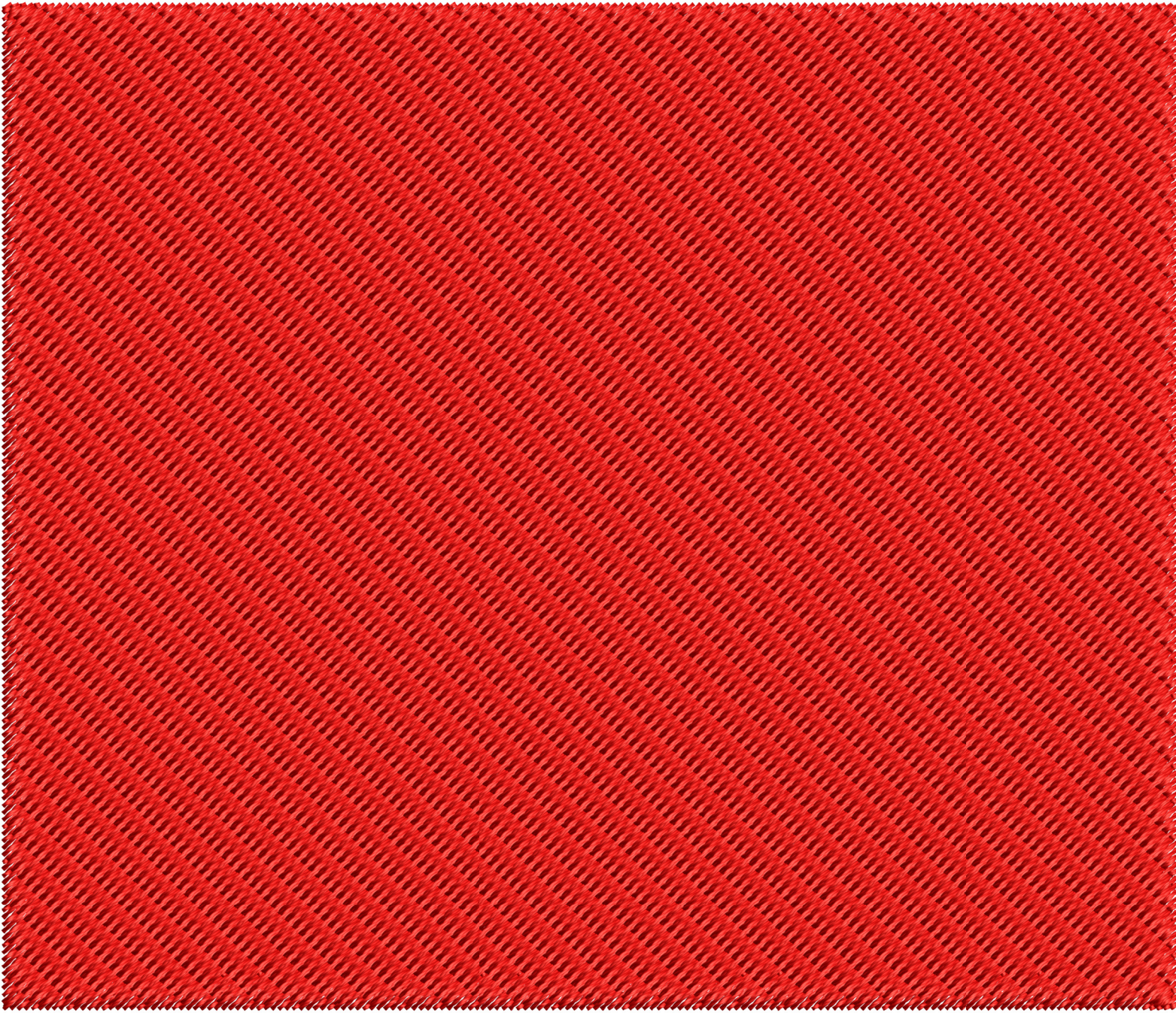
Machine: Tajima
Trims: 1

Fabric: Fabric Name
Required Stabilizer:
Stabilizer

042ET4X4V9

Colorway: Colorway 1

#	St.	Descr	Code
1.	■	11812 Red 3	
Total Bobbin:			114.76ft



Stitches: 13114
Colors: 1
Color changes: 0
Stops: 1

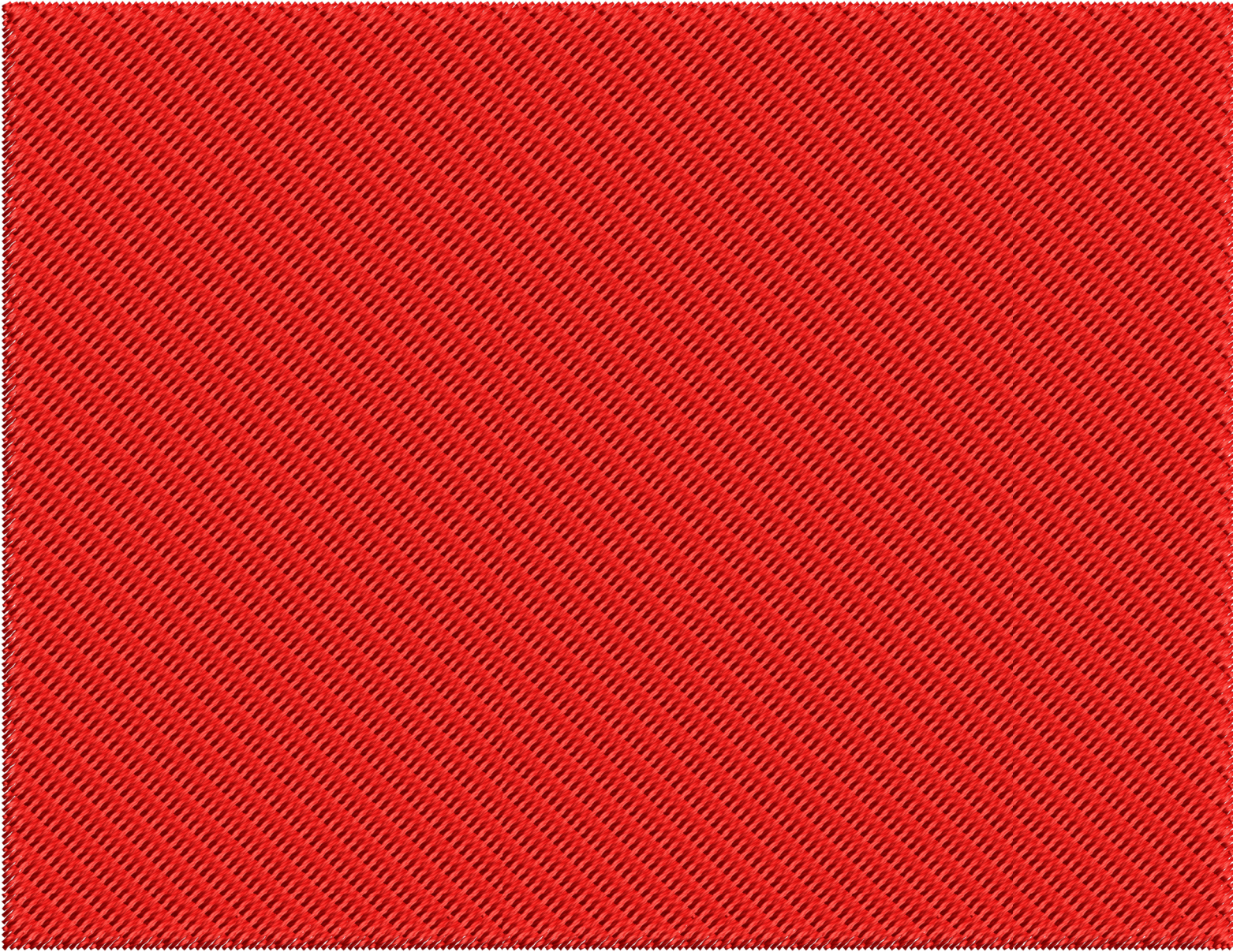
Machine: Tajima
Trims: 1

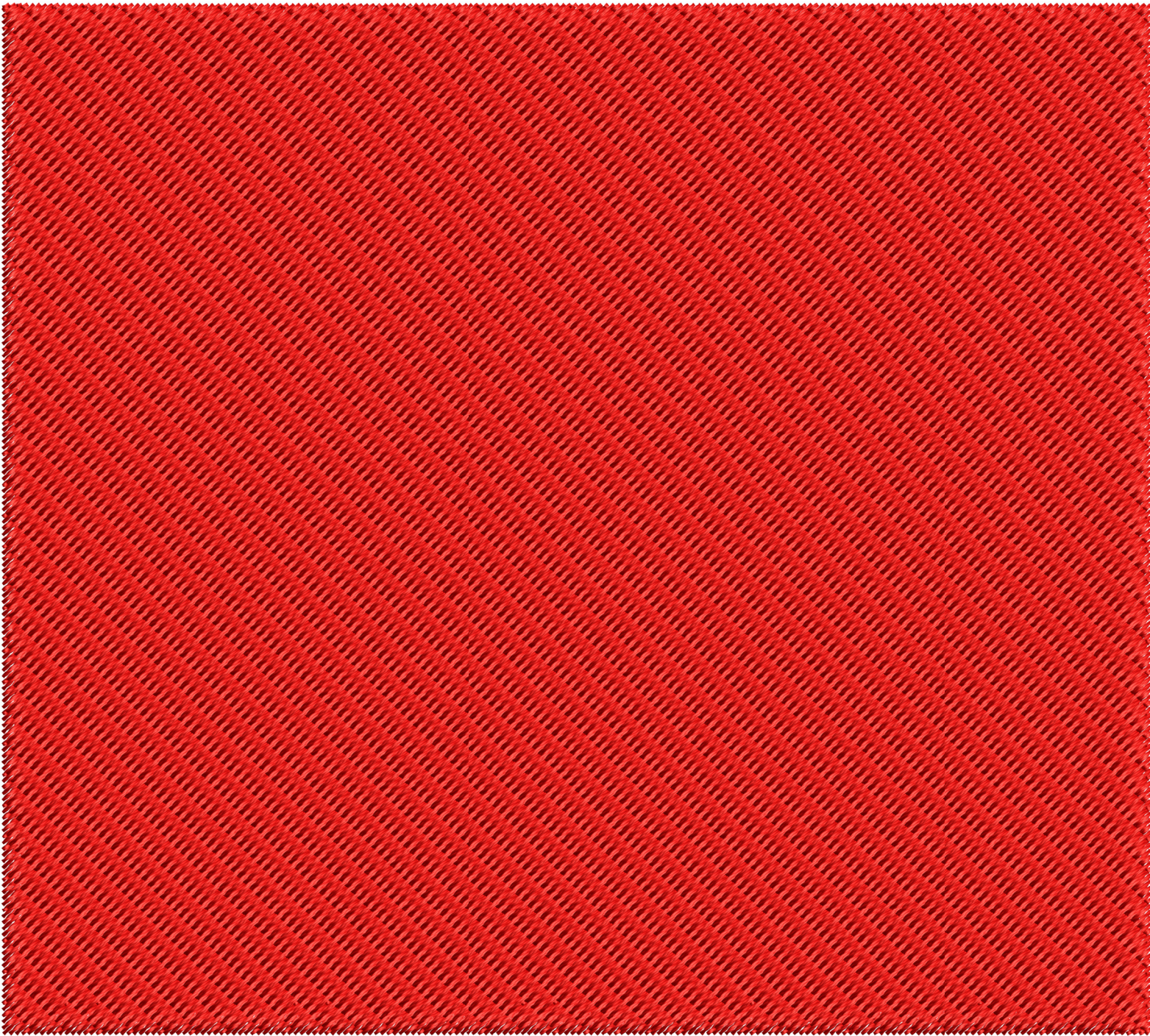
Fabric: Fabric Name
Required Stabilizer:
Stabilizer

042ET4X4V10

Colorway: Colorway 1

#	St.	Descr	Code
1.	■	13112 Red 3	
Total Bobbin:		127.86ft	





Stitches: 15197
 Colors: 1
 Color changes: 0
 Stops: 1

Machine: Tajima
 Trims: 1

Fabric: Fabric Name
 Required Stabilizer:
 Stabilizer

042ET4X4V11

Colorway: Colorway 1

#	St.	Descr	Code
1.	15195	Red 3	
Total Bobbin:			149.11ft